

YAMAHA MOTOR NEWS

1991 No. 2



YAMAHA MOTOR CO., LTD., Public Relations Division, 2500 Shingai, Iwata, Shizuoka 438, Japan Telephone 0538(32)1145, Facsimile 0538(37)4250



The 30th Tokyo International Boat Show

Expanding the fun-filled marine field



YMC President, Mr. Eguchi (extreme left), cuts the tape. Mr. Eguchi also serves as president of the Japan Boating Industry Association, the show organizer.



For six days from February 9 to 14, the "30th Tokyo International Boat Show" was open at the Harumi Tokyo International Trade Center. As the largest marine industry event in the country, the Tokyo Boat Show reflected the Japanese marine boom that has been gathering momentum over the past several years. This year's show attracted a record 219 companies from Australia, Canada, Holland, Italy, New Zealand, the U.K., U.S.A. and the host country, Japan. And turning out to see their displays over the six-day run were some 155,000 visitors.

Fitting with its role as Japan's largest marine manufacturer, Yamaha used this show as a venue to present an impressive overall appeal for a growing world of marine sports and leisure. Yamaha presented concept models here that expand this world to new realms, like the first rotational jet propulsion system for a boat, the Yamaha RJP, and the super-light Yamaha Single Scull OR-52. To in-

roduce a picture of the full range of Yamaha's marine activities, this year's booth was divided into four sections. The "Hardware (products)" section displayed boats, Water Vehicles, outboards, etc., the "Software" section introduced Yamaha's licensing and

school activities, the "Event" section introduced the "Yamaha Osaka Cup-Melbourne/Osaka Double-handed Yacht Race 1991", while the "Facilities" section gave visitors a picture of the various types of marine facilities YMC is involved in.



Project Snowball is Off and Rolling

Canadian snowmobile consumers are once again afforded the opportunity to catch a glimpse of the newest snowmobiles from Yamaha. For the second year in a row, Yamaha Motor Canada has released Project Snowball, a travelling showroom carrying the future of Yamaha snowmobiles. This year's version of Project Snowball involves two 48 foot-long trucks, tastefully decorated and carrying four new Yamaha snowmobiles and accessories for the 1992 season.

The Canadian snowmobile market is very healthy and thousands of enthusiasts are anticipating great things from Yamaha. The

star of this year's Project Snowball is the eagerly awaited V MAX-4, a 750cc high-performance model that will be the most powerful Yamaha snowmobile ever produced.

Not only can consumers see what will be available next fall, but they can also put down a deposit to qualify for one of next year's Yamahas. Yamaha Motor Canada foresees a complete sell-out of the V MAX-4 even before it is available to ride! Through hard work and dedication, the staff at Yamaha Motor Canada are very optimistic about Project Snowball and the future of Yamaha products in Canada.



Yamaha OX99 engine in auspicious F1 start



The ultimate challenge of automobile racing, the Formula One World Championship series got off to its '91 start on March 10, in the U.S. GP at Phoenix.

In this season opener, the Yamaha OX99-powered BT59Y machine driven by Martin Brundle for the Brabham-Yamaha Formula One Team finished 11th in an auspicious debut for this new V-12 Yamaha racing engine.

Starting from 12th position on the grid, Brundle quickly moved up to 10th position, which he held until lap 9 when his right rear

tire hit the sidewall, damaging the suspension and forcing a pit stop. The pit mechanics worked quickly to repair the damage and Brundle was able to return to the race and recover well to a respectable 73-lap, 11th place finish.

Finishing in first position was A. Senna (Marlboro McLaren Honda), followed by A. Prost (Ferrari) in second and Nelson Piquet (Camel Benetton Ford) in third. Brundle's teammate, Mark Blundell was forced to retire after an unlucky spinout on an oil spot.

New boat factory begins production in Kyushu, Japan

~ Yamaha Yatsushiro Works Co., Ltd. completed ~

JAPAN



The newly completed Yamaha Yatsushiro Works Co., Ltd.

On February 2, a ceremony was held to officially open the newly completed Yamaha Yatsushiro Works Co., Ltd. located in Yatsushiro City, Kyushu, southern island of Japan. The event marked the completion of the first stage of construction and start of production at what is now one of

Japan's largest boatbuilding facilities. Yamaha Yatsushiro Works began limited operation last November as Yamaha's seventh domestic boat factory. This facility is now engaged in start-to-finish production of large-scale powerboats, sailboats and fishing boats. Nearly 200 guests attended the

ceremony, including the Governor of Kumamoto Prefecture, the Mayor of Yatsushiro City and a host of distinguished local guests. Yamaha Motor was represented by its President, Mr. Eguchi and Senior Managing Director, Mr. Arata. The newly completed factory is devoted not only to production, but

also to dealing conscientiously with environmental issues and responding effectively to the advances in technology and expanding demand the changing times will bring. The aim of all involved is to make this factory one that will contribute to the development of the local community as a whole, centering primarily around the field of Marine business.



Complete outboard line displayed at Düsseldorf Boat Show

GERMANY



The Düsseldorf Boat Show, "Boot '91" took place from January 19 to 27, attracting some 1800 exhibitors from 25 countries and drawing an estimated 353,000 visitors. Mitsui Germany rose to the occasion by putting on an impressive display of the full line of Yamaha outboards, stern drives, Water Vehicles and generators in a booth that covered 250 sq. meters.

Vintage Japanese Motorcycle Club in Canberra

The Vintage Japanese Motorcycle Club is an organization that spans three continents. There are four separate and independent branches based in Canada, England, New Zealand and Australia, that keep in contact through a regular exchange of newsletters. The main aim of the club is to foster the restoration and enjoyment of Japanese motorcycles that are over 15 years old. The branch based in Australia is made up of members living both in Australia and Japan.

The VJMC in Canberra organizes a Rally which will be held this year on the Queen's Birthday weekend, June 8 ~ 10. The Rally is being held under the auspices of the A.C.T. Vintage and Classic Motorcycle Club. For an entry fee of only \$15, participants can enjoy a nice program of short touring and a barbecue lunch on Saturday and another short ride to Weston Park where the bikes are displayed on Sunday.

The organizers also prepare trophies for such categories as Best Over 15 years, Best Under 15 years, Best Yamaha, Best Honda, Best Suzuki, Best Kawasaki, Best Bridgestone, Rider Who Rode the Farthest to the Rally and even a Hard Luck Award to be awarded at the Sunday event. Mr. Alan Shires, the Rally organizer is also the proud owner of two Yamahas; a 1962 YDS2-250cc and a 1964 YDS3-250cc. The YDS2 is in original condition and is still road registered. He also has a collection of pre RD Yamaha models

TURKEY



First dealer convention is big success

On November 30 of last year, Turkish Yamaha motorcycle distributor Tatis Holding A.S. organized the first dealer convention of its kind to be held in Turkey. Representatives from 40 motorcycle dealerships around Turkey gathered at the Izmir Büyük Efes Hotel for this highly successful convention. Representing YMC at the convention was General Manager of Motorcycle Overseas Operation, Mr. Takashima. According to Mr. Oğuz Tatis, President of Tatis Holding A.S., the purpose of the meeting was to increase consciousness of

the potential for positive sales promotion in the large Turkish market with its presently low user ratio for motorcycles as a means of daily transportation. The meetings saw active discussion concerning the topics of market surveys for more effective sales promotion, the choice of suitable models to market, the establishment of an effective distribution network, supply of spare parts and service activities. The convention also produced positive plans for future structuring of a sales network and agreement on sales policies for the coming '91 season.

including a YR1, 2, 3, and 5, a YM1 and 2, and a YDS2, 3 and 5.

The photo here shows a recent display of nine of his bikes at one of the local shopping centers for Motorcycle Awareness

Week.

For more details contact: Mr. Alan Shires
20 Kirkton Street Wanniasa ACT 2903
Australia Phone: (06) 231 4313 Australia



AUSTRALIA

JAPAN

Japanese Labor Minister invigorates himself with a sidecar-fitted FJ1200

Motorcycling is more than just the leisure pursuit of a certain group of enthusiasts, it is a sport that has a wide following that crosses the lines of age, sex and profession. Mr. Sadatoshi Ozato, Japanese

Minister of Labor, is a good example. In spite of his age, 60, and his busy schedule as a Diet member, motorcycling is a rewarding part of his leisure time. Mr. Ozato's relationship with the motorcycle runs back more than 30

years to the very start of his political career. At that time, when automobiles were still a luxury in Japan, a motorcycle offered him a means to make the rounds of his large electorate.

Several years after being elected to the National Diet, Mr. Ozato changed to an automobile. But, three years ago the desire to break out of his routine and regain the vitality of those early days led him to take up motorcycling once again, after nearly 30 years. "I wanted to prove to myself that I still had the strength and the energy for motorcycling," says Mr. Ozato.

His family opposed the idea of a two-wheeler, so he determined Mr. Ozato fell on the idea of a sidecar motorcycle with its greater stability. After studying the motorcycle magazines, he decided on a Yamaha FJ1200 with sidecar, and he has never regretted the choice. The FJ1200 is now the favorite of his small stable of sidecar machines.

Whenever Mr. Ozato returns home to his native Kagoshima, Kyushu, he finds time from his busy schedule - often early mornings or late in the evenings - to take his FJ1200 out for a spin. "The feeling of a brisk ride in the fresh air is great," says the Minister.

Around Kagoshima, Mr. Ozato is known as the "sidecar-riding Diet member," and many long for the honor of joining him in the passenger seat on one of his rides. Sidecar riding is now more than just a personal hobby for the Minister, it's a way to keep in close touch with his constituency.

3hp Yamaha GHP wins energy conservation award

JAPAN

Recently, Yamaha's 3hp multiple-type Gas Heat Pump air conditioner was presented the "'91 Award for Excellence in Energy Conservation" at an award ceremony held on February 4 at the Japan Science Foundation in Tokyo.

This award, organized by the Energy Conservation Center, Japan, with the assistance of the Ministry of International Trade and Industry, is presented to developers of new technologies, products or systems that make major contributions primarily in the area of more efficient and effective use of energy.

The 3hp Yamaha GHP air conditioner is unique in that it uses highly combustion-efficient gas instead of electricity to power its heater/air conditioner unit, thereby making it a more economical system. Another outstanding feature that won acclaim for this system is the fact that it uses the heat of the engine in an under-floor heating system to achieve even higher energy efficiency.

Norkis displays YZ250 at national race conference

The "Cycle Sports & Safety Association of the Philippines", an organization for the promotion of motor sports headed by Mr. Butch Chase, held a conference on January 23, 1991, to kick off this year's Camel Motocross Series.

At this event, held at the Sheraton Hotel in Manila, Yamaha was the only maker invited to display its latest racing machine. Philippine Yamaha importer Norkis-Yamaha responded to this invitation by providing a brand new YZ250 model for display.

The national motocross series here in the Philippines began with round one on January 27, at the man-made course in Munding Park near the Marikina Municipal Hall, and will continue for 8 more rounds in the cities of Bacolod, Iloilo, Cebu, Roxas City and Tacloban before concluding at the Manila Grand finals on May 26 of this year.



Show visitors keep Surface Mounter staff busy

On January 23 to 26, the 29th INTERNEPCON JAPAN '91 exhibition was held at the Nippon Convention Center (Makuhari Messe) near Narita International Airport, and Yamaha was there to display its latest surface mounter models.

INTERNEPCON JAPAN is an international trade show specializing in electronic design, manufacturing and inspection equipment, etc. This year some 803 companies

from 16 countries, including Australia, Belgium, Britain, Canada, France, Germany, Holland, Hong Kong, Israel, Japan, Korea, Singapore, Sweden, Switzerland, Taiwan and the U.S.A., making this the largest show of its kind in Japan to date.

The Yamaha exhibit centered around the models of its surface mounter range released over the past year; the YM66S, YM84S and YM100VP. Surface mounters are the robotic machines that fit semi-conductor chips and other electrical components to circuit boards. The increasing complexity and compactness of such electronic equipment as TV cameras and audios in recent years has created a demand for ever higher levels of precision in parts mounting, and the surface mounters Yamaha exhibited respond to the such needs of today's market.

In addition to the display and demonstration of surface mounter models, this year's Yamaha booth also featured dispensers and screen-type printing machines. Over 107,000 people visited the show during its 4-day run, and staff at the Yamaha booth were kept busy answering questions from a large number of industry representatives and other visitors.



Pirovano to wear a Yamaha for Superbike series

On February 6, one of the world's top riders, who finished 2nd in the 1990 Superbike World Championship series, Italian Mr. Fabrizio Pirovano and his sister/manager, Ms. Cinzia Pirovano, visited Yamaha Motor's home office, where they received warm welcomes from representatives of the Sales, Motor Sports and Parts sections.

Mr. Pirovano, who rides for the team of Yamaha's Italian importer Belgarda S.P.A., signed a contract with the Parts Division during this visit to wear the Yamaha Helmet "YFV" in his races this year, beginning with round one of the '91 Superbike series in Great Britain. Let's wish Mr. Pirovano the best of luck in his races throughout the coming season.

JAPAN

Marine Enjoyment for Everyone

1991 TOKYO INTERNATIONAL BOAT SHOW



Rising standards of living in Japan have been accompanied in recent years by a growing demand for bigger, more luxurious boats and other marine products. Yamaha has answered these growing needs with a diversified fleet of quality marine products, the sales of which now account for 24.6% of all Yamaha Motor's business.

Across the country today new marinas are being constructed and interest in such large-scale yachting events as the America's Cup and the YAMAHA OSAKA CUP - Melbourne/Osaka Double-handed Yacht Race 1991 is on the rise. Among the young generation, marine sports like Water Vehicle riding and scuba diving are also gaining popularity. In order to offer ever wider and more appealing ways to enjoy the pleasures of this growing marine world, YMC is doing more than just supplying its variety of marine products, we are also offering a wide range of instructional and educational programs, and promoting and managing marinas and other facilities in our efforts to use our hard-earned expertise and know-how to help even more people enjoy sound marine sports.

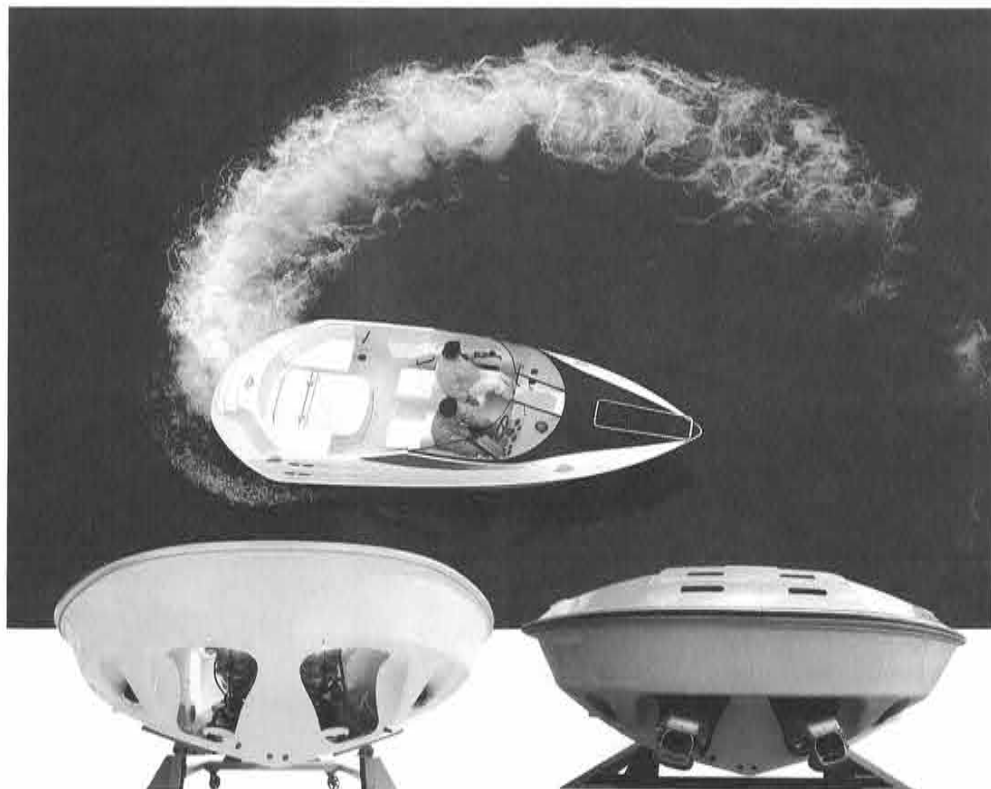
Continuing last year's theme of "The Sea; A New Frontier of Sports", this year's Yamaha booth went even further in its appeal for new water romance that spans the entire marine field. Introduced here is this year's Yamaha booth with a focus on the newly unveiled concept models.

CONCEPT MODELS (Sample Exhibit)

Yamaha RJP

The Yamaha RJP is an innovative new jet propulsion system for boats with the world's first directionally movable jet nozzles. Differing from a conventional propeller drive, the RJP ejects a stream of compressed water aft to achieve outstanding propulsion characteristics. Another stand-out feature of this system is its ability to automatically rotate 180° to promptly expel any floating debris that might enter the water inlet.

The positioning of the underwater stern jet nozzles has also made possible a new low drag hull shape. An injection water flow deflector makes forward/reverse shifting smooth and quick. Other performance features include the capability for stationary 360° turns and tight, sure turns when in motion. The absence of a propeller protruding underneath also improves shallow water performance.



The jet nozzles when retracted in the housing.

The jet nozzles when extended.

Marine goods and accessories corner



Marine apparel



Yamaha Philosopher-45

The Philosopher-45 is a concept model design that brings together a pair of 200hp outboards and full sail rigging in one boat to expand the potential for marine enjoyment to a level never before possible. The 16.5m² owner's cabin is spaciouly ap-

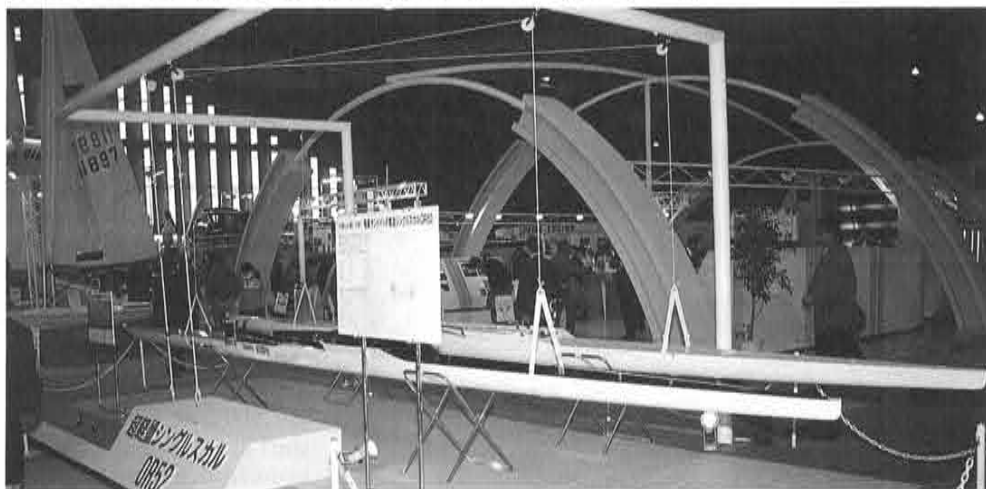
pointed with 2 beds and a sofa, while the separate dining room, galley and bathroom complete with shower offer all the comforts necessary to make this model worthy of being dubbed a "second house on the sea."



Yamaha OR-52 Single Scull

Single-scull rowing is an Olympic event pursued all over the world. Yamaha now introduces its ultra-lightweight OR-52 Single Scull, built with the latest carbon fiber and

fiberglass composite, foam-filled sandwich construction technology. This advanced construction method makes it 30% lighter and yet more rigid than conventional sculls.



HARDWARE (Products)

Powerboats

The new Yamaha models SC-60, one of the largest class salon cruisers in Japan, PC-27, a versatile sports cruiser for a variety of sea activities, and the SR-23, designed for maximum enjoyment of waterskiing and diving.

The attractive 19-ton Sightseeing Boat is designed to be the perfect answer for luxurious fishing trips or high-class entertaining in the form of dinners or parties in its elegant salon.



SC-60



19-ton Sightseeing Boat

Sports Fishing Boats

The FR-46 is Yamaha's top-of-the-line offshore sports fishing model. The new model FR-26, the FR-24 and the versatile FR-21 fill out the FR series. The UF series, as represented by the Tackle 27 and 25, features a center cabin layout for fishing convenience.

Sailboats

The Yamaha-31S, new for '91 and offering sporty performance either for racing or cruising, is one of this year's major models along with the new 28S, a model that boasts both excellent control and exceptional speed.



Yamaha 31S and other boats of the sailboat corner

Imported Boats

Yamaha Motor imports and markets boats through tie-ups with the world's internationally famous builders such as Trojan, a large powerboat maker, Thunderbird, a high-quality sports-boat builder, S2 Yachts, a sports cruiser maker of the U.S., and Jeanneau, a French boat and yacht manufacturer.

We have introduced the Trojan 12 Express, The Formula-419SR-1, the Tiara Sport 290, the Pursuit-2800 Open, the Jeanneau 39 Sun Fast, and other select boats.



Imported boat corner

Marine Engines

Yamaha's outboard line-up runs from 2 to 250 horsepower. Like all the models in Yamaha's line, the 76° V-6 Yamaha 250 AETO combines compactness, fuel efficiency and superb power. Yamaha stern drives like the YE-5.7L and Marine diesels like the SX-859KM also come in a variety of models.

The marine engine corner



Water Vehicles

The new MJ-650TX joins our line-up of current models. Designed with the sports-oriented family in mind, this new Marine Jet (Water Vehicle) features a new hull bottom design for improved maneuverability.



The Water Vehicle corner



1991 Yamaha Marine Ladies: These charming ladies will help to promote water sports at many Yamaha marine events this year.

SOFTWARE



A Boat License School

This corner introduces Yamaha's wide-ranging promotional activities. In Japan, where boat and Water Vehicle licenses are required, we have promoted our Yamaha Boat License School program since 1971. Also, in addition to Yamaha's various schools for sailing, cruising, boardsailing, Water Vehicle riding and water skiing, we are constantly working in cooperation with government agencies and industry in programs to instruct users in proper boating. To allow more people easy access to marine sports, we also manage membership-type marine clubs at 5 locations around the nation. And, to train the personnel necessary for such enterprises, YMC will open a "Yamaha Marine Academy" as of this year. This school will train industry specialists based on the knowledge and know-how gained from long years of experience with our Marine schools and other software aspects of Yamaha's marine business.

EVENTS

Yamaha is serving as title sponsor for this March's YAMAHA OSAKA CUP - Melbourne/Osaka Double-handed Yacht Race 1991, as well as putting its latest boatbuilding technology into the building of one of the participating boats, the 16m "Lucky & Luppy" for Kankaku Securities. At the helm of this boat will be a Yamaha employee, Mr. Y. Hakomori.

YMC is also serving as an official sponsor and official challenge boat builder for the Nippon Challenge America's Cup 1992

Committee which will launch a challenge for the next America's Cup held in San Diego.

In addition to these international events, YMC sponsors or supports a wide range of events of all sizes domestically. Also, we continue to organize Yamaha Racing Teams and participate in various races to help encourage gifted sailors as well as gathering valuable race data for feedback into our product development.

A replica of the "Lucky and Luppy" attracted viewer's attention at the Event booth.



FACILITIES

As another part of its marine business activities, YMC is working for the spread of marinas and other marine facilities. Opened last April, the Otaru Port Marina has already established its reputation as Hokkaido's marine sports mecca. Marine Wave Otaru, responsible for operating Otaru Port Marina, was established jointly with both public and private funds, including those from Yamaha. We cooperate in the operation of the marina, as well as establishing and managing the marine shop "Seacle." In addition to full management of the

Yamaha Marina Hamana-ko and Yamaha Marina Biwa-ko, YMC has formed JOB (Japan Owners Boating) to manage two other marinas at Harima in Hyogo Pref. and Shido in Kagawa Pref.

Another Yamaha affiliate, Maricom Kyushu Co., Ltd., is contributing greatly to the promotion of marine-oriented leisure in Kyushu by running the Marine Center Hakata, complete with a diving school program, a marine shop and seafood restaurant.

Yamaha Marina Hamana-ko



Building a corporate heritage the wonderful world of sports

Yamaha's race activities began years ago in the field of motorcycle racing. But as we have diversified as a company, these activities have spread to the marine field, snowmobiles and karts. Now Yamaha's race programs reach to the very pinnacle of automobile racing, the F1 GP, as we continue to build a corporate tradition in motor and marine sports.

Besides the obvious contributions in the field of technological development, we consider these race activities, to be vital to our corporate development as a whole. The experience and know-how gained through these activities helps build quality in all aspects of our corporate activities from product development to manufacturing, sales and even employee enrichment.

Yamaha Motor is eager to pursue these race activities in cooperation with our overseas subsidiaries, importers and the sponsors as much as possible. By doing so, the mutual benefits reaped from these activities can be multiplied. Some good examples are the Paris-Dakar teams fielded by French Yamaha importer Sonauto

and Italy's Belgarda, the Motocross World GP team of Holland's Yamaha Motor Europe NV and the AMA National team fielded by Yamaha Motor Corp., U.S.A. We now see teams supported by Yamaha Motor Canada and Sonauto taking part in the grand snowmobile event that began last year, the Harricana Snowmobile Rally. Team management and rider support is also going on at the dealer and private club level, as well.

The sense of solidarity and shared spirit of challenge that are born from such race activities help strengthen the bonds between YMC and its partners, while also serving to build the Yamaha brand image. We want to be a company that helps provide people with dreams worth pursuing and the fulfillment that comes from realizing them. Through our wide-ranging program of race activities we are seeking to make a corporate contribution to the wonderful world of sports. In this issue we will introduce Yamaha's race program for the motorcycle World Championships and the 1991 F1 series that begin in March.

MOTORCYCLE WORLD CHAMPIONSHIPS

1990 was a very successful season for Yamaha. Wayne Rainey and John Kocinski of Marlboro Team Roberts Yamaha captured the World Championships in both the 500cc class and 250cc class. These performances also brought Yamaha the 500cc and 250cc maker championships. In the motocross field, Yamaha Motor Europe NV Team rider Pekka Vehkonen placed second in the 250cc class of the World Championships.

In the 1991 season, Yamaha's activities will be supplemented in accordance with the following two themes.

- ① Contributing to the stimulation of competition in the 500cc class, and
- ② Helping to create an environment that encourages the participation of more private teams.

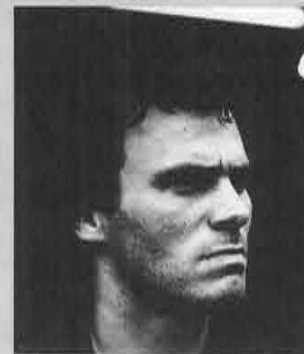
With regard to the 500cc class, a severe shortage of state-of-the-art machines and other factors are making it more

and more difficult for private teams to participate. In light of this, YMC has adopted a new policy under which it will lease factory engines as well as factory machines to private teams, in hopes of stimulating new vitality in the motorcycle race theater as a whole.

As for the 250cc class, there is already a healthy competitive atmosphere based on the availability of production racers built by all the major manufacturers. There is also an abundance of riders in competition backed primarily by private teams on both the domestic and international circuits. To help maintain this positive atmosphere and ensure that as many teams as possible can participate on equal standing, YMC will restrict its program of factory racer participation to a limited number, primarily for the purpose of gathering data for future production models.

250cc class World Championship Road Racing

ALBERTO PUIG



Nationality: Spanish
Age: 24
Hobbies: Motocross and trial.
Career highlights: 1989 - Placed 7th in the 250cc class of the Dutch TT of the World Championship Road Racing Placed 23rd in 250cc Road Racing World Championship 1990 - Placed 16th in 250cc Road Racing World Championship
Team: Ducados Yamaha Team

PAOLO CASOLI



Nationality: Italian
Age: 25
Career highlights: 1987 - Won the Portuguese GP in the 125cc Road Racing World Championship 1989 - Placed 35th in the 250cc Road Racing World Championship 1990 - Placed 16th in 250cc Road Racing World Championship
Team: Agostini Yamaha

500cc World Championship Road Racing

WAYNE RAINEY



Nationality: U.S.A.
Age: 23
Hobbies: Dirt riding, cycling and wet-ski.
Career highlights: 1989 - Won the Japanese GP and U.S. GP of the 250cc class World Championship Road Racing. Won AMA 250cc Championship Placed 14th in 250cc Road Racing World Championship. 1990 - Won 250cc Road Racing World Championship.
Team: Team Marlboro Yamaha Roberts

ADRIEN MORILLAS



Nationality: Spanish
Age: 27
Hobbies: Skiing and others
Career highlights: 1988 - Won the Portuguese GP, Dutch TT and Czecho GP 250cc class. Placed 2nd in 250cc Road Racing World Championship. 1989 - Placed 8th in 250cc Road Racing World Championship. 1990 - Placed 6th in 500cc Road Racing World Championship.
Team: Ducados Yamaha Team

Nationality: U.S.A.
Age: 30
Hobbies: Off-road riding, hunting, fishing and Water Vehicle riding.
Career highlights: 1988 - Won Suzuka 8-hour World Championship Endurance Race. Placed 3rd in 500cc Road Racing World Championship. 1989 - Placed 2nd in 500cc Road Racing World Championship. 1990 - Won 500cc Road Racing World Championship.
Team: Team Marlboro Yamaha Roberts

JEAN-PHILIPPE RUGGIA



Nationality: French
Hobbies: Motocross, Off-road riding and skiing
Career Highlights: 1988 - Ranked 16th overall in Superbike World Championship. Placed 3rd in Le Mans Endurance Race. 1989 - Ranked 30th overall in 250cc Road Race World Championship. 1990 - Placed 20th in 250cc Road Racing World Championship.
Team: Team Yamaha Sonauto Mobil 1

DOUG CHANDLER



Nationality: U.S.A.
Career Highlights: 1980 - Made track race debut at the age of 15. 1987 - Ranked 3rd overall in AMA national dirt track race championship. 1988 - Ranked 3rd overall in AMA National Superbike Championship. 1990 - Ranked 11th overall in Superbike World Championship. Won AMA National Superbike Championship.
Team: Team Uncini

JOHN KOCINSKI



Nationality: French
Age: 25
Career highlights: 1988 - Placed 7th in 250cc Road Racing World Championship. 1989 - Placed 7th in 250cc Road Racing World Championship. 1990 - Placed 8th in 500cc Road Racing World Championship.
Team: Team Yamaha Sonauto Mobil 1

JUAN GARRIGA



Mr. Kenny Roberts: Owner of Team Marlboro Yamaha Roberts



Mr. Giacomo Agostini: Owner of Team Agostini Yamaha



'91 YZR500



250cc class World Championship Motocross

PEKKA VEHKONEN



Nationality: Finnish
 Age: 26
 Hobbies: Fast cars, training
 Career highlights:
 1985 - Won 125cc class World Championship.
 1987 - Placed 2nd in 250cc class World Championship.
 1988 - Placed 2nd in 250cc class World Championship.
 1989 - Placed 2nd in 250cc class World Championship.
 1990 - Placed 2nd in 250cc class World Championship.
 Team: YMENV Team

AMA Supercross and Motocross Series

DAMON BRADSHAW



Nationality: USA
 Age: 18
 Hobbies: Hunting, water-skiing, Water Vehicle riding
 Career highlights:
 1989 - Won AMA 125cc East Coast Supercross Championship
 Placed 2nd in AMA National 125cc Championship.
 Won Japan Supercross in Osaka.
 1990 - Placed 4th in AMA National Motocross
 Placed 8th in AMA Supercross Series.
 Team: YMUS Team

JEFF EMIK

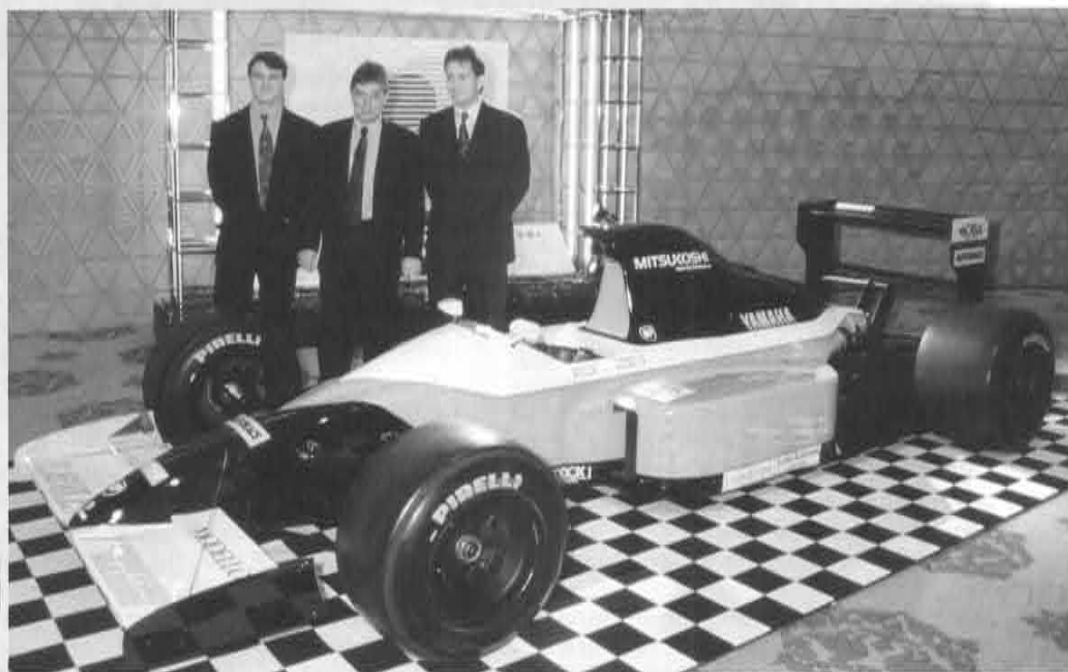


Nationality: USA
 Age: 20
 Hobbies: Water Vehicle riding, running, cycling and music
 Career highlights:
 1989 - Won NMA Ponca City Grand National Championship. Won AMA amateur national championship in modified 250cc class A.
 1990 - Ranked 4th overall in 125cc supercross West league championship.
 Ranked 5th overall in AMA national 125cc Motocross championship.
 Team: YMUS Team

F1 WORLD CHAMPIONSHIPS

BRABHAM-YAMAHA FORMULA ONE TEAM

Yamaha Motor and the British racing team "Brabham" Motor Racing Development have joined efforts to make up the "Brabham-Yamaha Formula One Team" and are jointly developing the engine, chassis and all other activities to take part in the 1991 F1 car race series. YMC offers the light and compact 5-valve 12-cylinder V type OX99 engine for the BT59Y machine. The engine was built with the various data and experience gained from the 1989 Yamaha V-8 OX88 engine, and includes a number of major improvements. The new engine has already been tested on circuits in Silverstone, U.K., Kyalami, South Africa and Estoril, Portugal, and is progressing well in its development. The team will introduce a new machine, the BT60Y, in time for the third round of the series on April 28, in Misano, Italy.



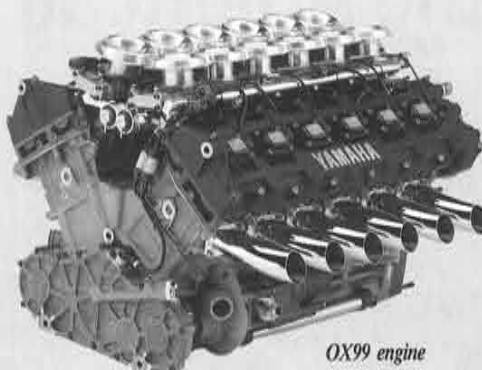
BT59Y SPECIFICATIONS

Engine (Yamaha OX99)

Cylinder layout : 70 V-12
 Valve layout : DOHC, 5 valve per cylinder, direct lifter
 Displacement : 3,498cc
 Max. power output : Over 600hp
 Fuel feeding system: Bosch system
 Ignition : Bosch system
 Dry weight : Under 140kg
 Overall length : 725mm
 Overall width : 540mm
 Overall height : 504mm
 Gear box : Brabham
 Brakes : SEP Carbon pads & discs
 Wheels : Brabham (Front) 12.5" x 14" (Rear) 16" x 14"
 Tires : Pirelli
 Suspensions : (Front/rear) Coil spring type pull rod
 Shock damper : Brabham

Chassis

Overall length: 4,350mm Wheelbase : 2,950mm
 Overall width : 2,150mm Front track : 1,800mm
 Overall height: 990mm Rear track : 1,750mm



OX99 engine

DRIVERS PROFILE

MARTIN BRUNDLE



Date of birth: June 1, 1959 (31)
 Nationality: British
 First F1 GP: 1984 Brazil GP
 Number of GP starts: 69
 Team affiliations:
 1984 - 86 Tyrrell
 1987 Zakspeed
 1988 Williams
 1989 Brabham
 Best season ranking:
 11th place (1986)
 Best finishes:
 4th place - Once
 5th place - 4 times
 6th place - 3 times
 Career highlights other than F1:
 1980 - Placed 5th in FF2000 British Championship
 1982 - Placed 4th in F3 British Championship
 1983 - Placed 2nd in F3 British Championship
 1988 - Won World Sports Prototype Championship
 1990 - Won Le Mans 24-hour Endurance Race

MARK BLUNDELL



Date of birth: April 8, 1966 (24)
 Nationality: British
 Career highlights:
 1986 - Won FF2000 European Series Championship
 Placed 2nd in British Championship
 1987 - Placed 14th in FIA F3000 Championship
 1988 - 3rd in FIA F3000 Championship
 1989 - Placed 11th in World Sport Prototype Championship
 Placed 11th in F3000 Championship.
 Career highlights other than F1:
 Official test driver for Williams/Judd FW11 and Williams/Renault FW12 machines
 1990 - Drove Nissan R90C in World Sports Prototype Championship
 F1 race official reserve and test driver for Williams-Renault 12C and FW13 machines

OUTLINE OF THE TEAM

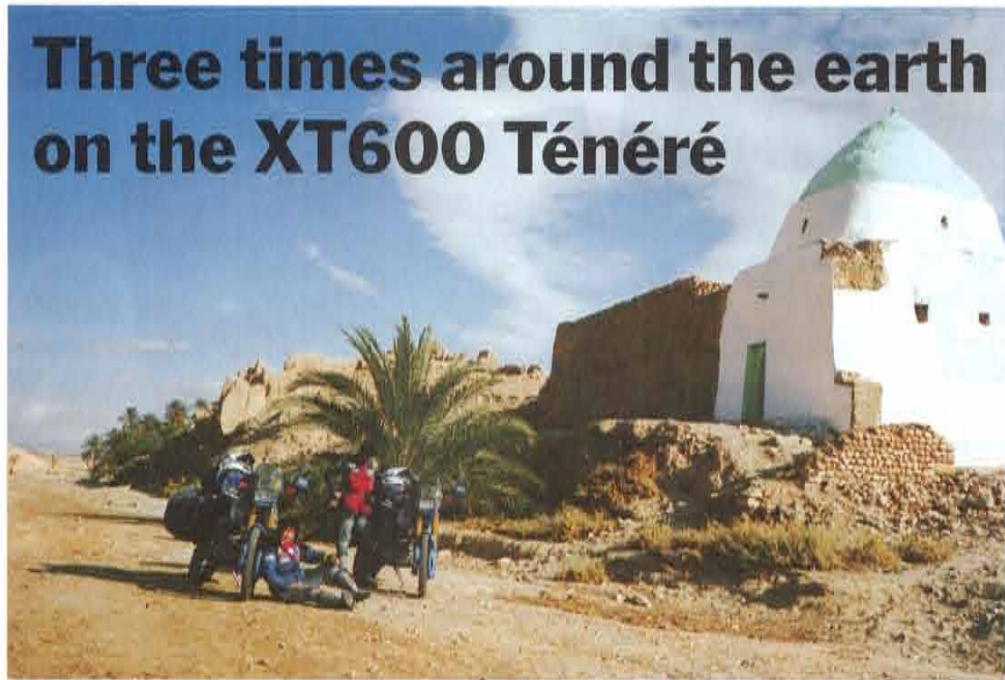
Team owner: Kohji Nakauchi
 Team director: Herbie Blash
 Drivers: Martin Brundle
 Mark Blundell
 Team office: MOTOR RACING DEVELOPMENT (PRODUCTION) LIMITED
 Roebuk House, Cox Lane Chessington, Surrey, KT9 1DG, England
 Engine-maintenance and delivery base: YPSILION TECHNOLOGY LIMITED
 5 Precedent Drive, Roosley, Milton Keynes, MK13, 8PT, England
 Machine: BT59Y
 Engine: YAMAHA OX99
 Main sponsors: Aoba Estate, Autobacs Seven Co., Ltd., Kyosho Corp., Madras Inc., Mitsukoshi World Motors, Inc., The Sumitomo Marine & Fire Insurance Co., Ltd. and Yamazen Corp.

Giving the team a grand send-off

On February 21 at a Tokyo hotel, a send-off party and press conference was held to formally introduce the Brabham-Yamaha Formula One Team. All the team members such as team owner, Kohji Nakauchi, team director, Herbie Blash, and the two drivers, Martin Brundle and Mark Blundell, were on hand here along with representatives of the team sponsors. Our Senior Managing Director, Mr. Takehiko Hasegawa made an address as representative of YMC. At the conference, Martin Brundle stated that the new engine is very reliable with a smooth power range and will be in top condition for the coming season.



Three times around the earth on the XT600 Ténéré



The husband and wife who started from Japan in June, 1987, on a pair of XT600 Ténérés to travel around the world, and whose adventures have been reported from time to time in Yamaha Motor News, recently returned home after three and a half years and nearly 130,000km on the road. In their travels through many lands during these years, Akira and Noriko Saito covered a distance equivalent to 3 circlings of the globe! But for all that travel, both the adventuresome couple and their XT600 Ténérés look in great shape.

Here is what they have to say about their experience.

"In our three and a half years of travel our XT600 Ténérés carried us through 50 countries and showed us a wide spectrum of peoples and landscapes. From the beauti-

ful aurora borealis of Alaska and great wilderness of the Rocky Mountains to the magnificent cactus groves of Mexico and the ancient culture of the Andes... We met the kind and vivacious people of Brazil and saw the Berlin Wall just before it came down. We visited the birthplace of the Olympics in Greece and followed in the footsteps of traders along the ancient Silk Road through Iran, Pakistan and India.... The purpose of our journey was to meet and get to know people of many different countries, to see the cultures and lifestyles that had developed from the land they lived on, and to use all our senses to their fullest in the search for truths that the eye alone cannot perceive.

As our bikes led us from country to country, from town to town, we were made aware of the flow of culture that followed these same routes with the travelers and merchants of old. The roads gave us some new understanding of the history and appreciation of the national characters of the people we met, as well as giving us a new sense of our own identity.

Finally, we want to thank all the people in all the 50 countries we visited whose kindness helped brighten our path and made this great journey possible."



Norway: The entrance to the Arctic circle.

Journalists enjoy TDM850s to the full on Canary Islands

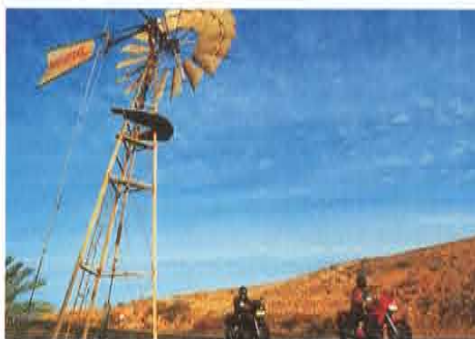
Yamaha Motor Europe NV held a test-ride for the TDM850 over 13 days from February 1 to 12 for European press in the Canary Islands. This is the model which got great attention from both industry and users when it debuted at last year's Paris Show.

The participants who gathered in the Canary Islands numbered about 80 from 12 countries; France, Italy, Spain, Germany, Britain, Switzerland, Austria, Holland, Greece, Sweden, Finland and Japan. They

were divided into six regional groups to attend a presentation of the model and enjoy a full day of test rides on a staggered schedule.

For the event, YMENV prepared 12 test and 5 show TDM850s, as well as 7 additional XT600Es. On test-ride day the journalists were allowed to ride the TDM850s all day, anywhere they liked along the beautiful, lightly trafficked roads that wind around the island. As a model designed for outstanding winding-road handling plus super-sports performance, the choice of the test site was very appropriate and well appreciated by the participants. Here they could experience the features of the TDM850 to the fullest, and their impressions of the model was very favorable.

Representatives from Belgarda and the local Yamaha importer also joined the final group and some rode their bikes for over 350km! YMENV said that, judging from the success of this test-ride event, the new TDM850 should be a success in the European market.



Grand touring through the American West

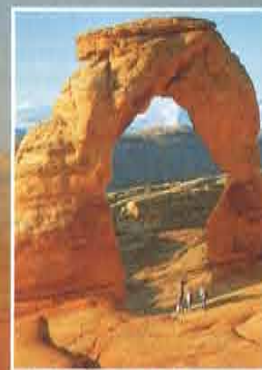


Bryce Canyon National Park station

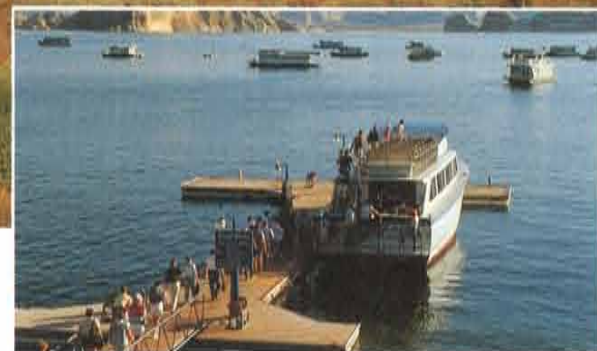
The touring course we will introduce this time takes the rider through 1900km of the western United States with its vast stretches of unspoiled nature. This is a course so full of natural beauty you will surely delight to every mile. In short, the course follows U.S. Routes 89 and 191 from Salt Lake City → Monument Valley → Las Vegas, taking in the eastern slopes of the highlands that extend from the Rocky Mountain chain through Utah state. Here, the traveler will see spectacular stone monuments carved by nature over thousands of years.

The course starts in Salt Lake City, the stately and well maintained capital of Utah. From here, one follows Interstate 15 south to the college town of Provo to pick up Rt. 6 and then Rt. 191. About 300km out of Salt Lake City the course enters the Arches National Park. In this spacious park the visitor will find monumental stone arches carved out of rock by the natural forces of wind, rain and sun in roughly 90 locations. Nearby can also be found Dead Horse Point State Park with its spectacular views of the deep valley carved by the Colorado River. From Moab, Rt. 191 takes you south close to the Arizo-

na border where magnificent panoramas of sculptured rock formations await the traveler's eye. This is the famous Monument Valley. Follow the Arizona border west from there and you will find Lake Powell. This man-made lake along the Colorado River is a great place to enjoy your favorite water sports. From here you can take Rt.89 south to the north rim of the Grand Canyon before heading back north to the equally spectacular Bryce Canyon National Park. Known for its "pink cliffs", this canyon actually offers the viewer vistas painted with nature's delicate palette of pinks and creams, whites and browns. If you have time, it is not a difficult side-trip to go down to the horseshoe shaped valley floor. From Bryce Canyon it is a short distance west to Zion National Park, where the show of natural wonder continues.



Arches National Park



Lake Powell

Photos courtesy of STATE OF UTAH JAPAN REPRESENTATIVE OFFICE