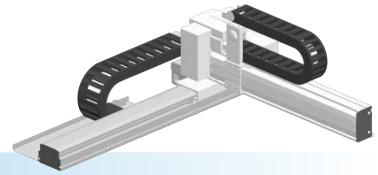


FXyBx 2 axes / IO

- Arm type
- Cable carrier
- Type with Y-axis I/O cable carrier added



Ordering method

FXyBx - C					IO	
Model	Cable	Combination	X-axis stroke	Y-axis stroke	ZR-axis	Cable
A1			15 to 245cm	15 to 55cm		3L: 3.5m
A2						5L: 5m
A3						10L: 10m
A4						

RCX320-2					
Controller / Number of controllable axes	Safety standard	Option A (OP.A)	Option B (OP.B)	Vision System	Absolute battery

Specify various controller setting items. RCX320 ▶ **P.660**

RCX222			
Controller	Usable for CE	I/O selection 1	I/O selection 2

Specify various controller setting items. RCX222 ▶ **P.670**

Specification

	X-axis	Y-axis
Axis construction <small>Note 1</small>	B10	-
AC servo motor output (W)	100	100
Repeatability <small>Note 2</small> (mm)	+/-0.04	+/-0.04
Drive system	Timing belt	Timing belt
Ball screw lead <small>Note 3</small> (Deceleration ratio) (mm)	Equivalent to lead 25	Equivalent to lead 25
Maximum speed (mm/sec)	1875	1875
Moving range (mm)	150 to 2450	150 to 550
Robot cable length (m)	Standard: 3.5 Option: 5,10	

Note 1. Use caution that the flame machining (installation holes, tap holes) differs from single-axis robots.
 Note 2. Positioning repeatability in one direction.
 Note 3. Leads not listed in the catalog are also available. Contact us for details.

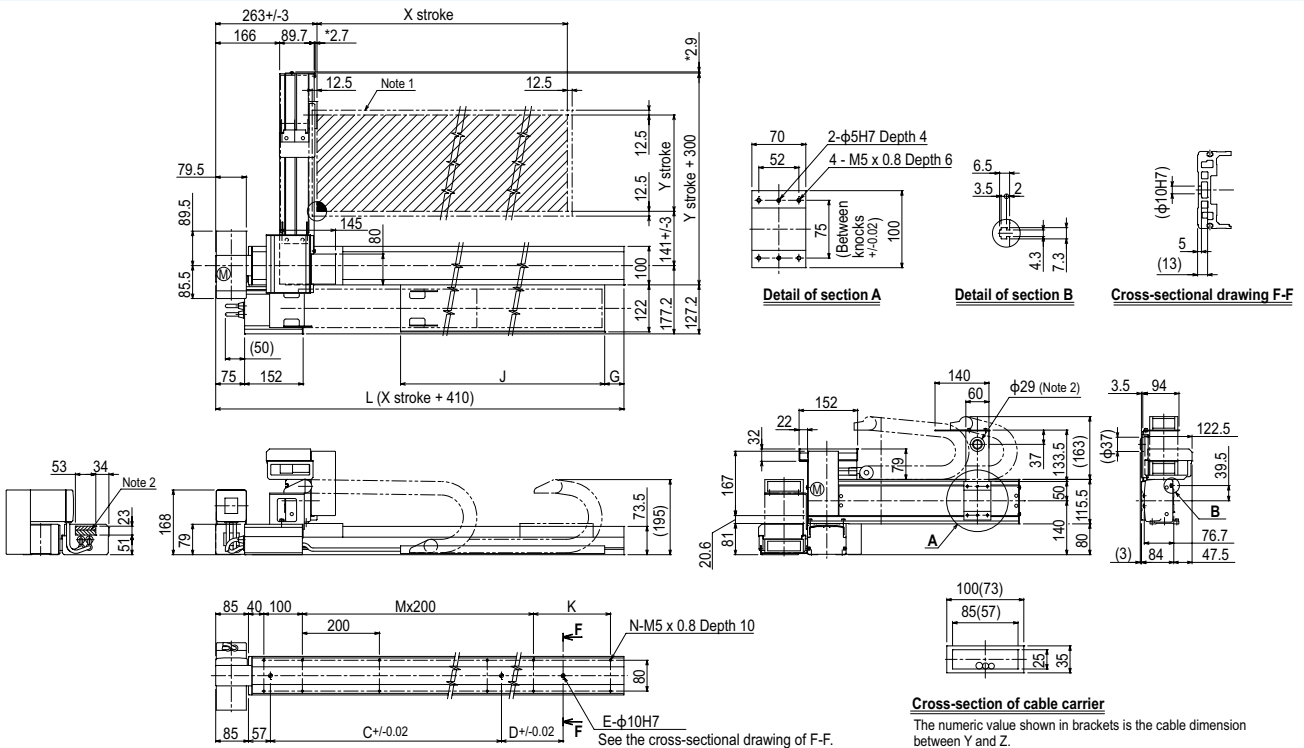
Maximum payload (kg)

Y stroke (mm)	XY 2 axes
150	7
250	6
350	5
450	5
550	3

Controller

Controller	Operation method
RCX320	Programming / I/O point trace / Remote command / Operation using RS-232C communication
RCX222	

FXyBx 2 axes / IO (A1)



Note 1. The moving range when returning to origin and the stop position when stopping by the mechanical stopper.
 Note 2. The shaded position indicates an user cable extraction port.
 Note 3. The dimension marked with an asterisk (*) indicates the height of the screw.

X stroke	150	250	350	450	550	650	750	850	950	1050	1150	1250	1350	1450	1550	1650	1750	1850	1950	2050	2150	2250	2350	2450
L	560	660	760	860	960	1060	1160	1260	1360	1460	1560	1660	1760	1860	1960	2060	2160	2260	2360	2460	2560	2660	2760	2860
C	240	420	600	600	780	780	960	960	1140	1140	1320	1320	1320	1320	1320	1320	1320	1320	1320	1320	1320	1320	1320	1320
D	-	-	-	-	-	-	-	-	-	-	-	240	240	420	420	600	780	780	960	960	1140	1140	1320	1320
E	2	2	2	2	2	2	2	2	2	2	2	2	3	3	3	3	3	3	3	3	3	3	3	3
G	0	50	0	50	0	50	0	50	0	50	0	50	0	50	0	50	0	50	0	50	0	50	0	50
J	330	330	430	430	530	530	630	630	730	730	830	830	930	930	1030	1030	1130	1130	1230	1230	1330	1330	1430	1430
K	100	200	100	200	100	200	100	200	100	200	100	200	100	200	100	200	100	200	100	200	100	200	100	200
M	1	1	2	2	3	3	4	4	5	5	6	6	7	7	8	8	9	9	10	10	11	11	12	12
N	8	8	10	10	12	12	14	14	16	16	18	18	20	20	22	22	24	24	26	26	28	28	30	30
Y stroke	150	250	350	450	550																			