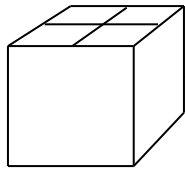


Pump room

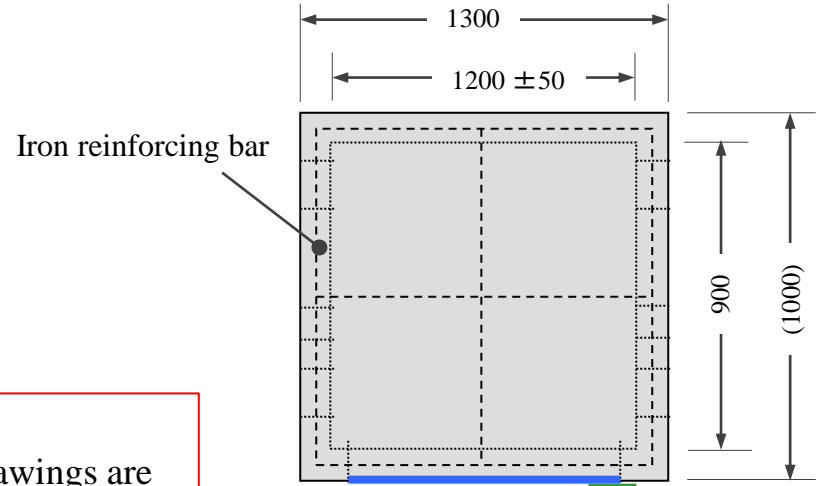
Size : 1000 x 1300 x 1000
 Material : Bricks and Cement
 Iron reinforcing bar : diameter 13mm
 Foundation: Gravel and Sand
 Door : Steel plate and L-angle
 Piping hole: $\phi 60\text{mm}$ (2 places)
 Ventilation hole: 100×50 (8 places)



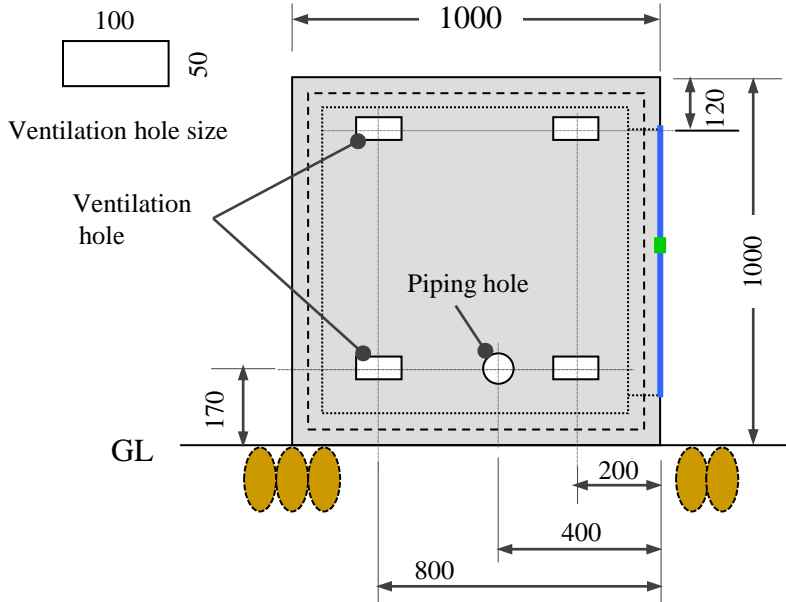
Iron reinforcing bar

Note:
The drawings are not proportional to the dimensions!!

<Upper View>



<Left Side View>



<Front View>

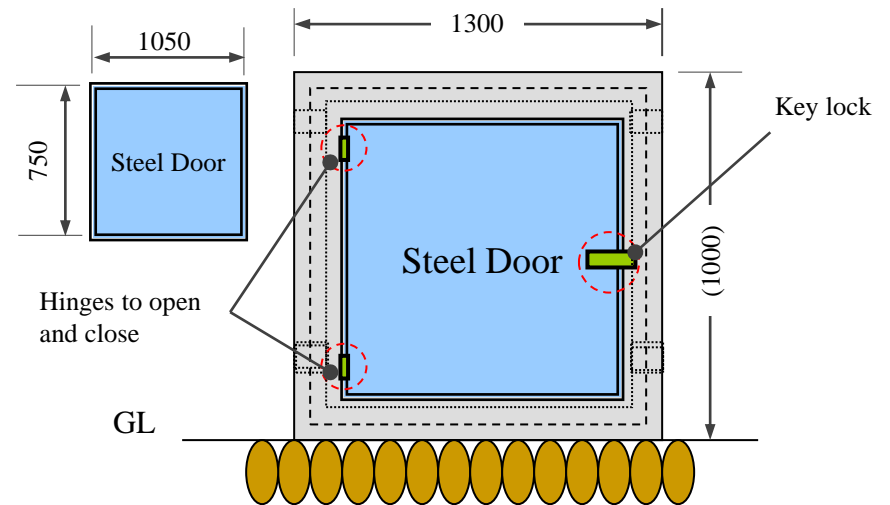


Image of pump room

