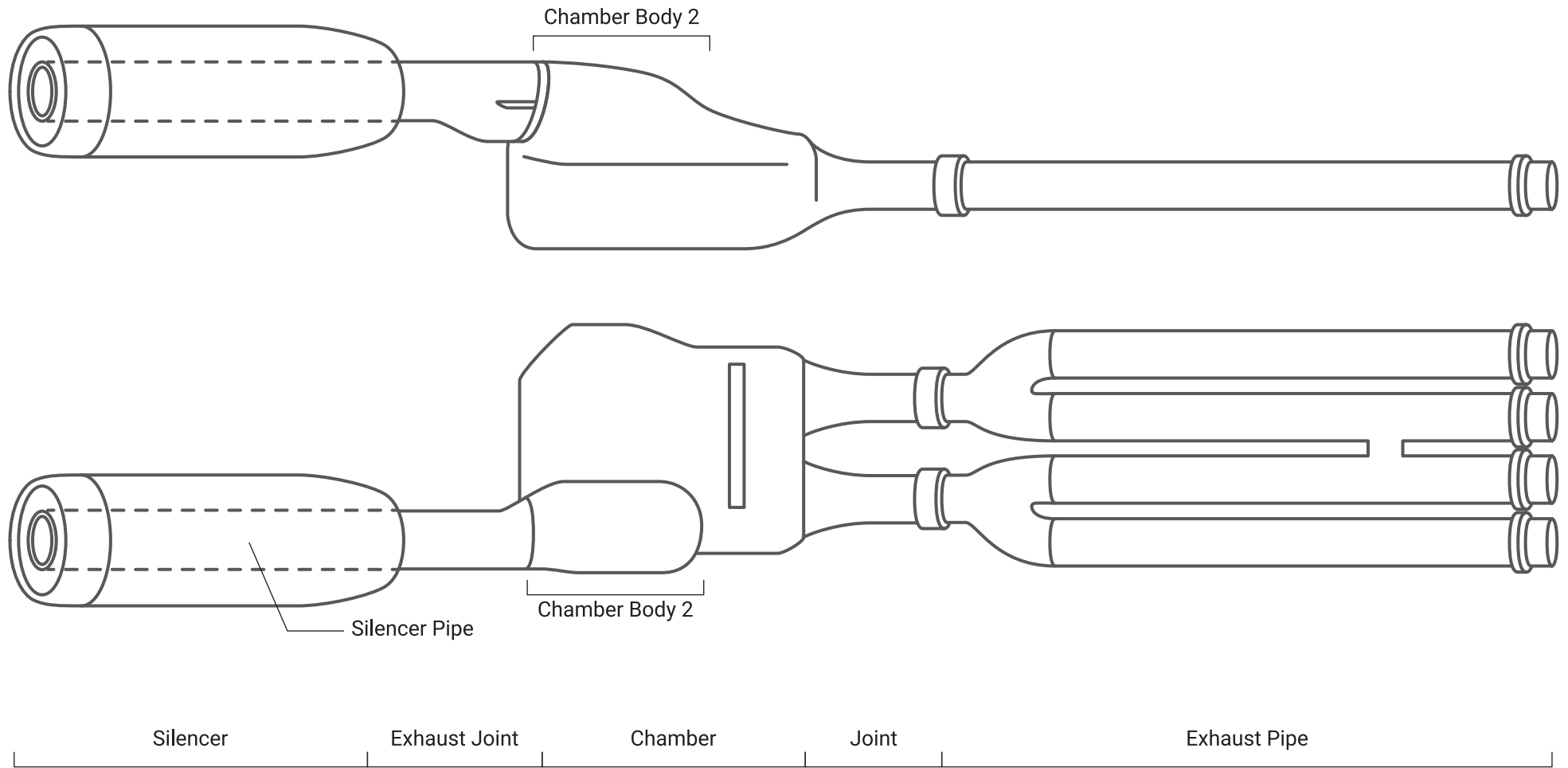
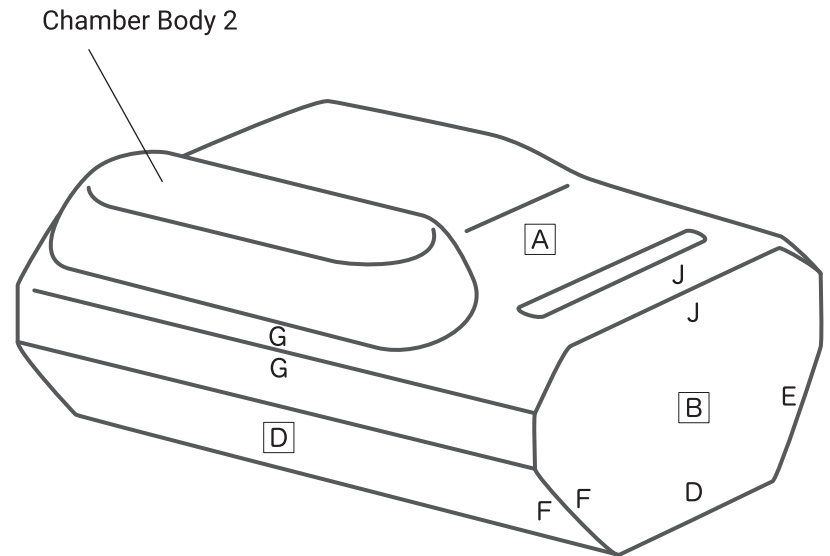
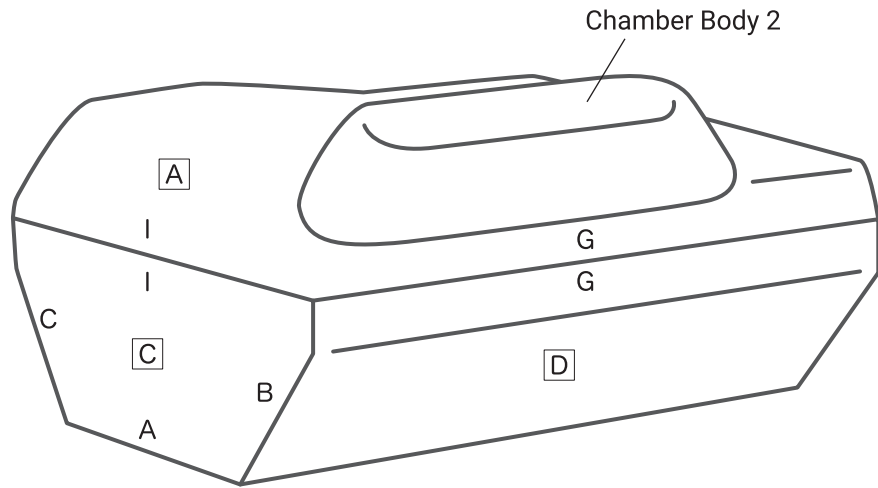
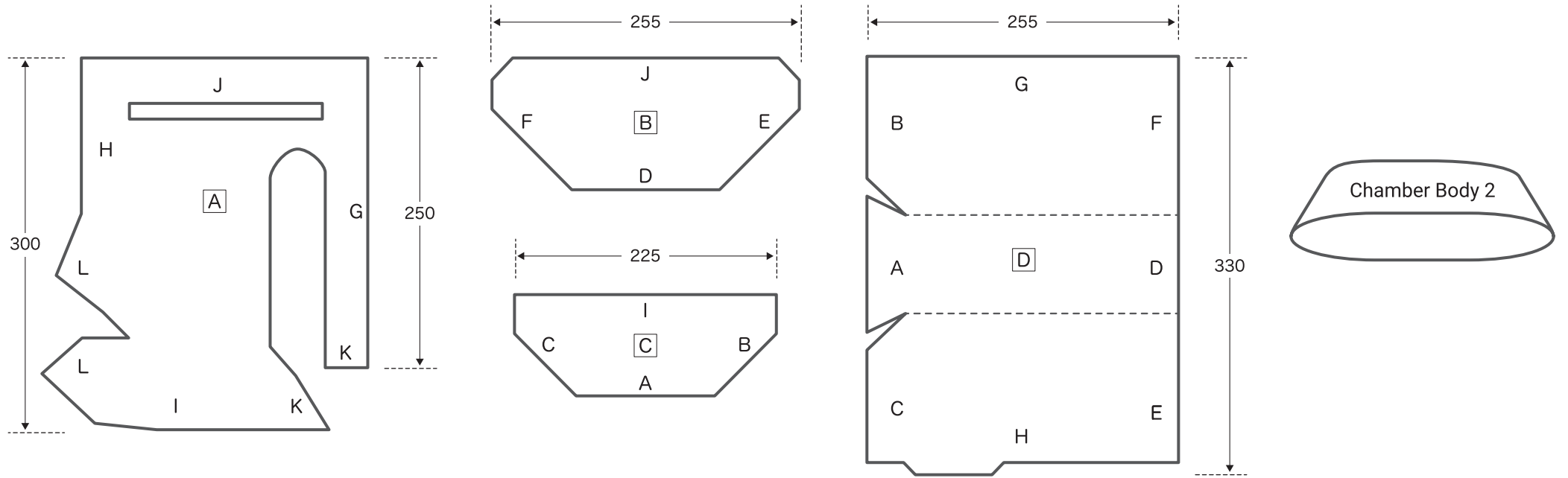


Name of each part



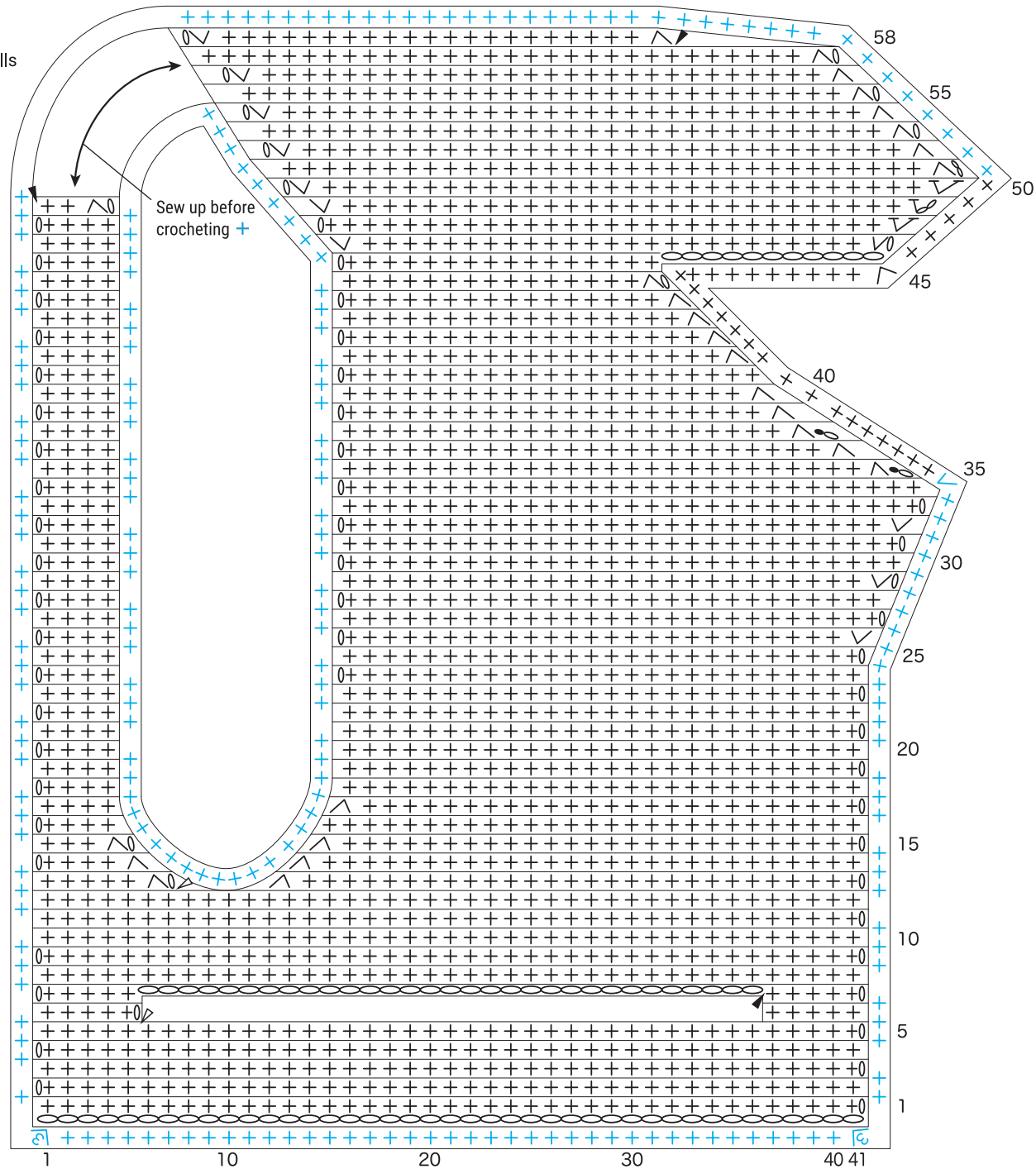
Chamber, chamber body 2 assembly diagram



**Chamber part A**

Hook 7/0  
 + ...medium grey 2 balls  
 + ...medium grey / brown 2 balls

Rows	Stitches	
58	24(-7)	
57	31	
56	31	
55	31(-1)	
54	32	
53	32(-1)	
52	33	
51	33(-1)	
50	34	
49	3	32
48	4	30
47	4	29
46	4	27(+11)
45	4	16
44	4	17
43	4	18
42	4	19
41	4	20
40	4	21
39	4	21
38	4	22
37	4	23
36	4	25
35	4	27
34	4	29
33	4	29
32	4	29(+1)
31	4	28
30	4	28
29	4	28(+1)
28	4	27
27	4	27
26	4	27(+1)
25	4	26
⋮	4	⋮
18	4	26
17	4	26(-1)
16	4	27
15	4(-1)	27(-1)
14	5(-1)	28
13	6	28
12	41	
⋮	⋮	
7	41	
6	10(-31)	
5	41	
⋮	⋮	
1	41	



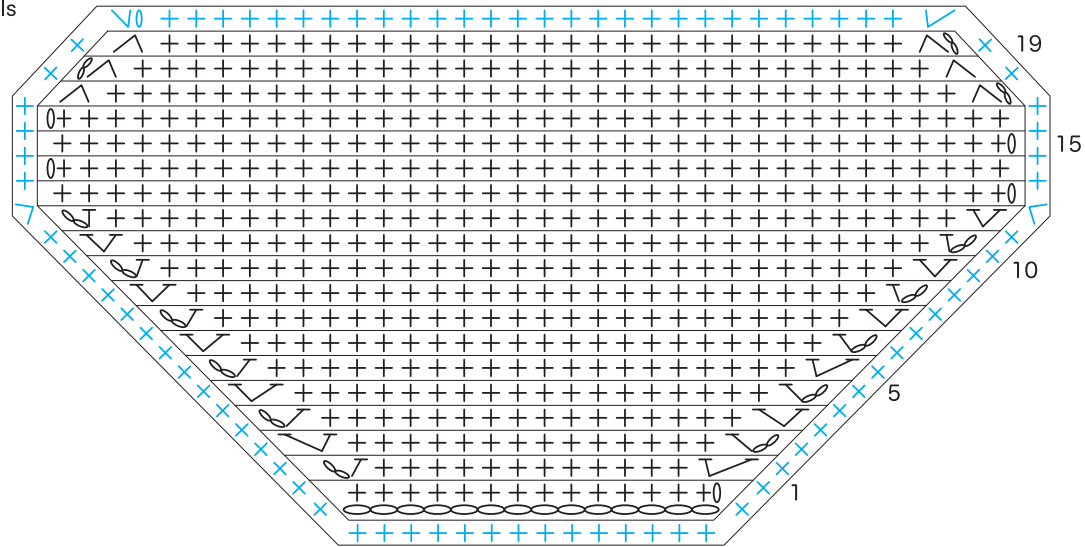
\* 41st stitch on the chain

**Chamber part B**

Hook 7/0  
 + ...medium grey 2 balls  
 + ...medium grey / brown 2 balls

Rows	Stitches
19	30(-2)
18	32(-2)
17	34(-2)
16	36
⋮	⋮
12	36(+2)
11	34(+2)
10	32(+2)
9	30(+2)
8	28(+2)
7	26(+2)
6	24(+2)
5	22(+2)
4	20(+2)
3	18(+2)
2	16(+2)
1	14

\*14th stitch on the chain

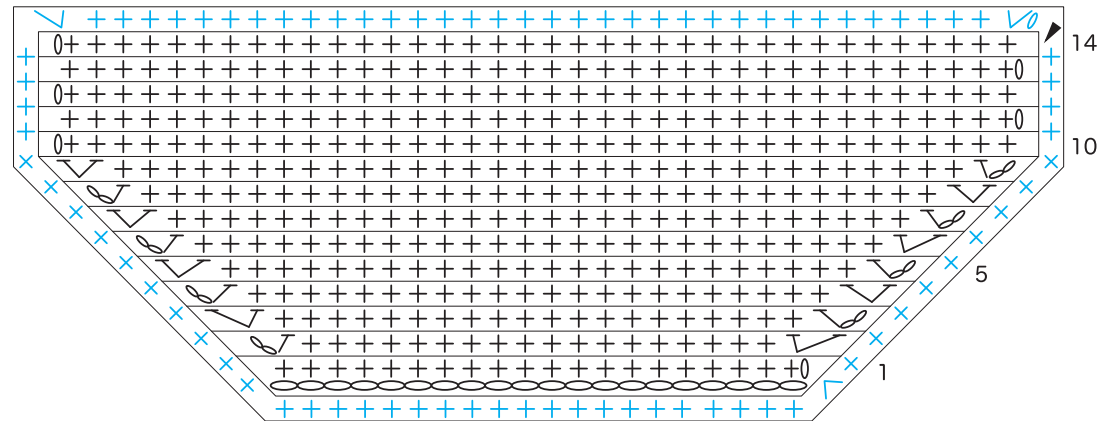


**Chamber part C**

Hook 7/0  
 + ...medium grey 2 balls  
 + ...medium grey / brown 2 balls

Rows	Stitches
14	31
⋮	⋮
9	31(+2)
8	29(+1)
7	28(+1)
6	27(+1)
5	26(+2)
4	24
3	24(+2)
2	22(+2)
1	20

\*14th stitch on the chain



**Chamber part D**

Hook 7/0

+ ...medium grey 2 balls

+ ...medium grey / brown 2 balls

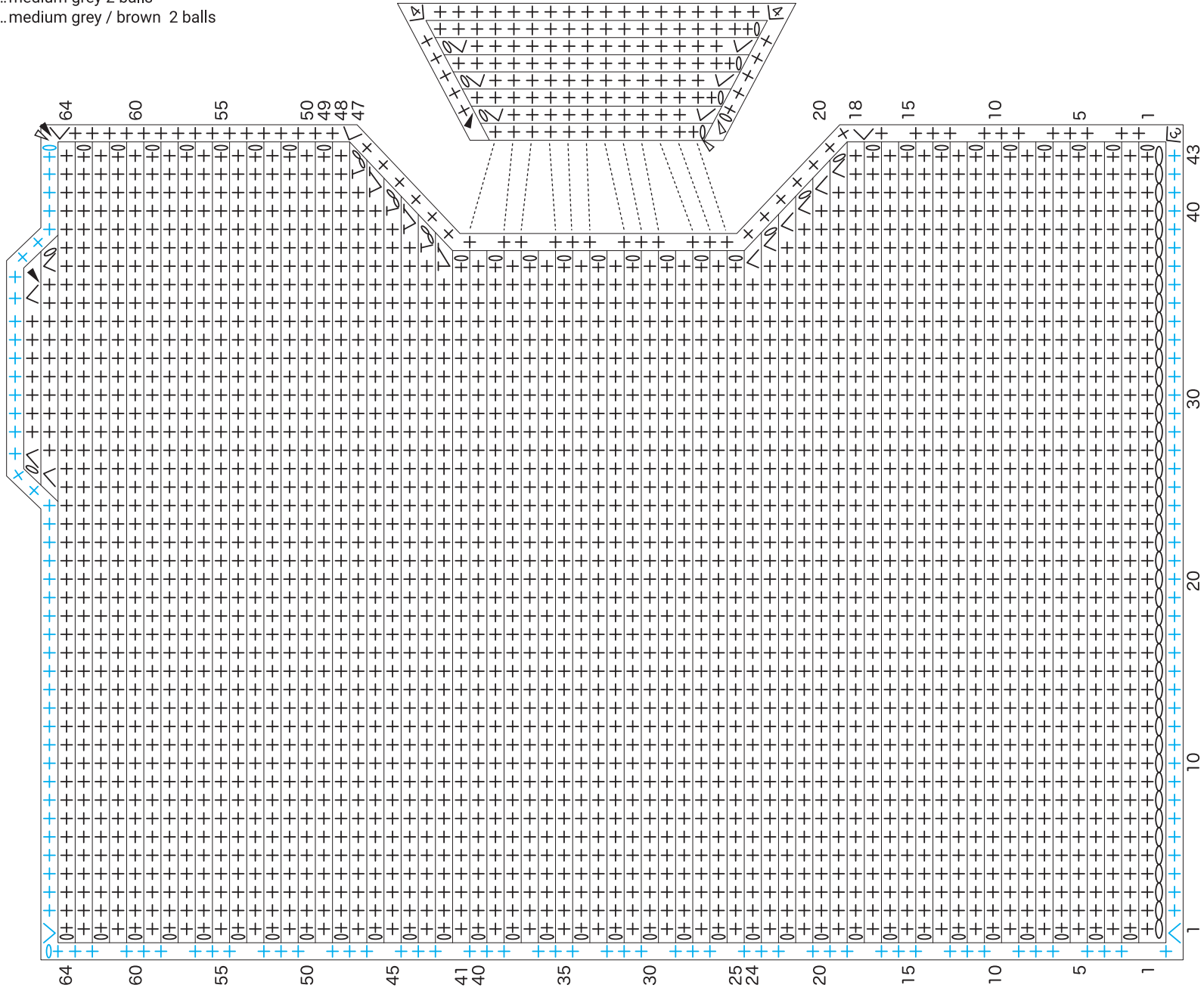
**Main body part**

Rows	Stitches
66	9(-3)
65	12(-31)
64	43
⋮	⋮
47	43(+1)
46	42(+1)
45	41(+1)
44	40(+1)
43	39(+1)
42	38(+1)
41	37
⋮	⋮
24	37(-1)
23	38(-1)
22	39(-1)
21	40(-1)
20	41(-1)
19	42(-1)
18	43
⋮	⋮
1	43

\*43rd stitch on the chain

**Additional part  
for rows 24 - 41**

Rows	Stitches
7	18
6	18(+2)
5	16
4	16(+2)
3	14
2	14(+2)
1	12



**Chamber Body 2**

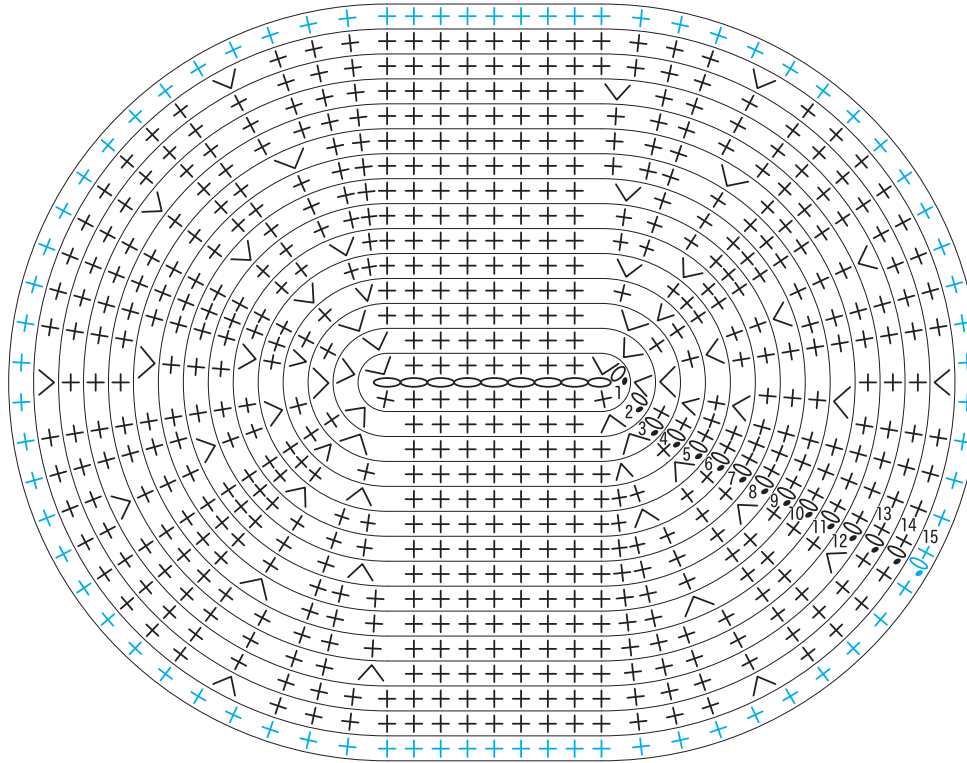
Hook 7/0

+ ...medium grey 2 balls

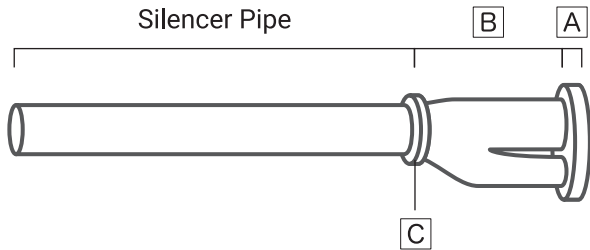
+ ...medium grey / brown 2 balls

Rows	Stitches
15	74
14	74(+6)
13	68
12	68(+6)
11	62
10	62(+6)
9	56
8	56(+6)
7	50
6	50(+6)
5	44(+6)
4	38(+6)
3	32(+6)
2	26(+6)
1	20

\*9th stitch on the chain



**Exhaust Joint**

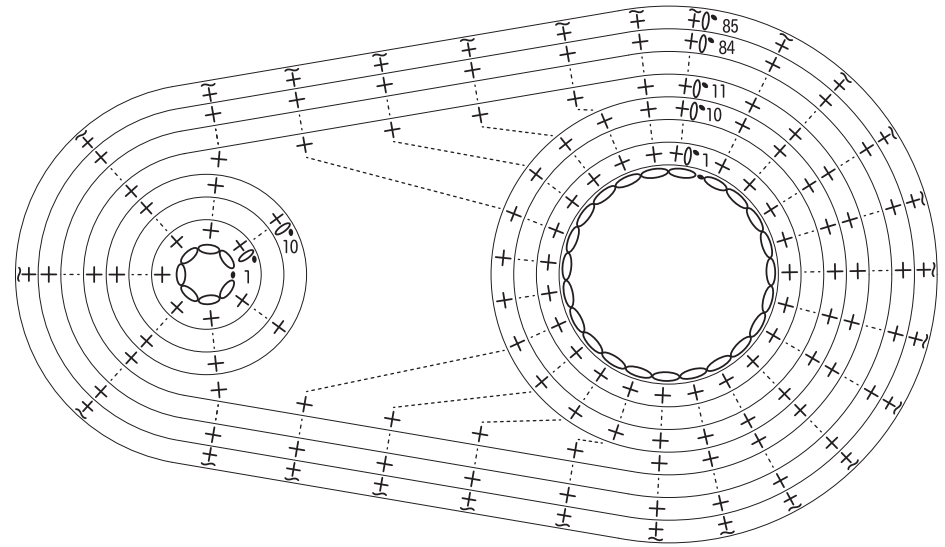


**Exhaust Joint part B / Silencer Pipe**

Hook 7/0  
Ultra thick dark grey 1 ball

Rows	Stitches	
85	26 *Reverse single crochet	
84	26	
⋮	⋮	
25	26 *Crocheted part	
24	26	
⋮	⋮	
11	26	
10	7	23
⋮	⋮	⋮
1	7	23

\*6th stitch on the chain

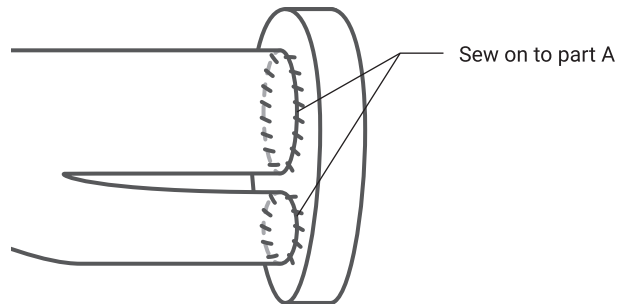
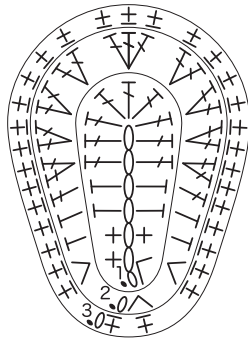


**Exhaust Joint part A**

Hook 7/0  
Ultra thick dark grey 1 ball

Rows	Stitches
3	31
2	31(+13)
1	18

\*6th stitch on the chain

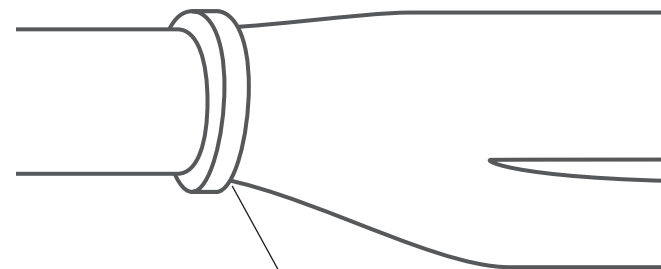


**Exhaust Joint part C**

Hook 7/0  
Ultra thick dark grey 1 ball

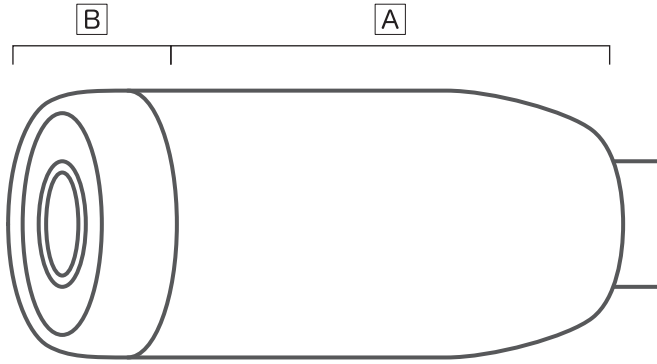
Rows	Stitches
1	26

Pick up from B



Crochet 1 row of single crochet on the 24th row with ultra thick dark grey.

Silencer

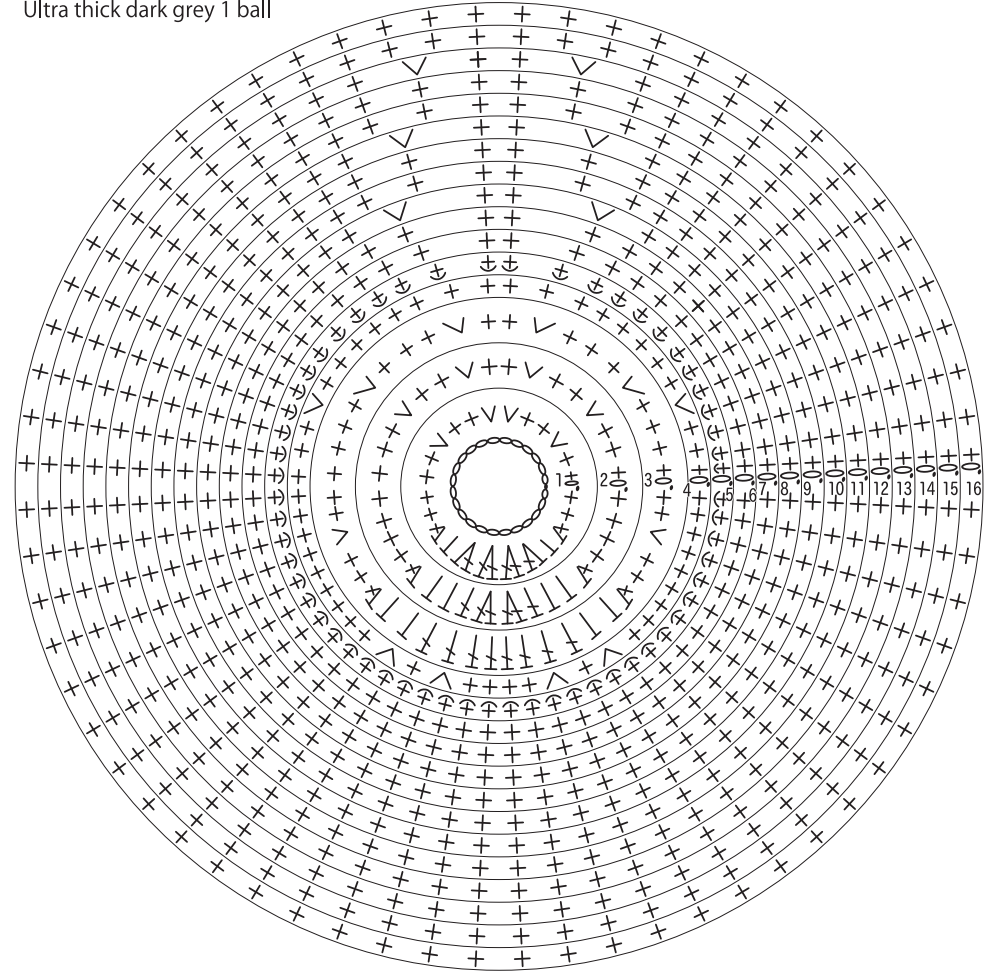


Silencer part B

Hook 7/0  
Ultra thick dark grey 1 ball

Rows	Stitches
16	64
15	64
14	64(+2)
13	62
12	62
11	62(+2)
10	60
9	60
8	60(+2)
7	58
6	58
5	58
4	58(+6)
3	52(+10)
2	42(+8)
1	34(+10)

\*24th loop in the chain

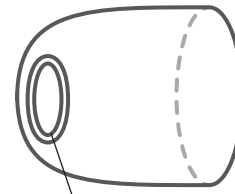
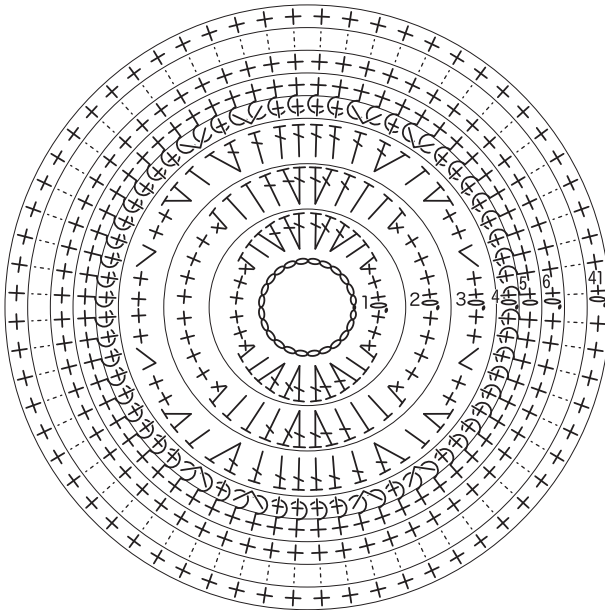


Silencer part A

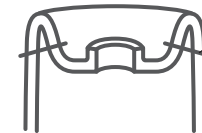
Hook 7/0  
Ultra thick charcoal 1 ball

Rows	Stitches
41	64
⋮	⋮
6	64
5	64 *Back post
4	64(+8)
3	56(+12)
2	44(+8)
1	36(+12)

\*24th loop in the chain



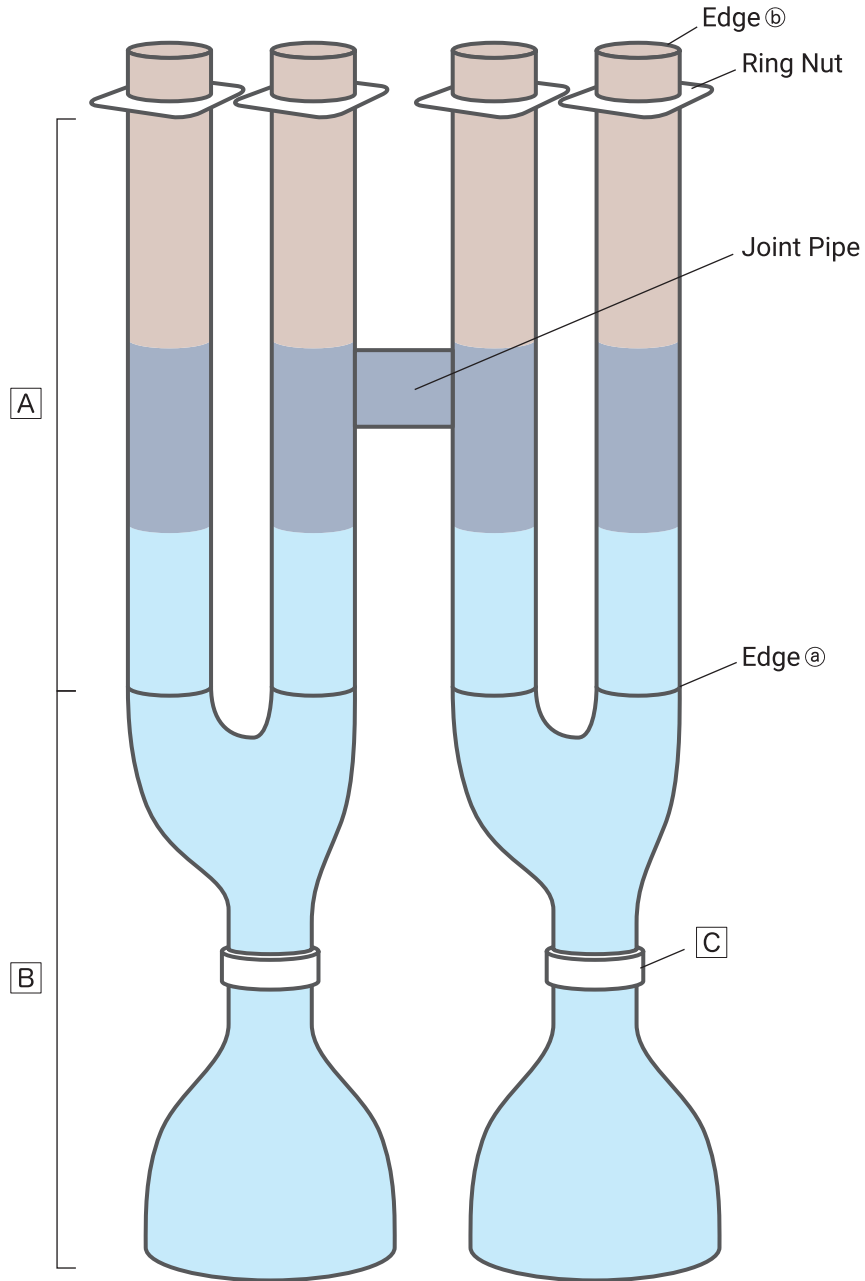
Use hook 7/0 and ultra thick charcoal to single crochet 1 row while picking up.



Put rows 5 and 9 together and sew.

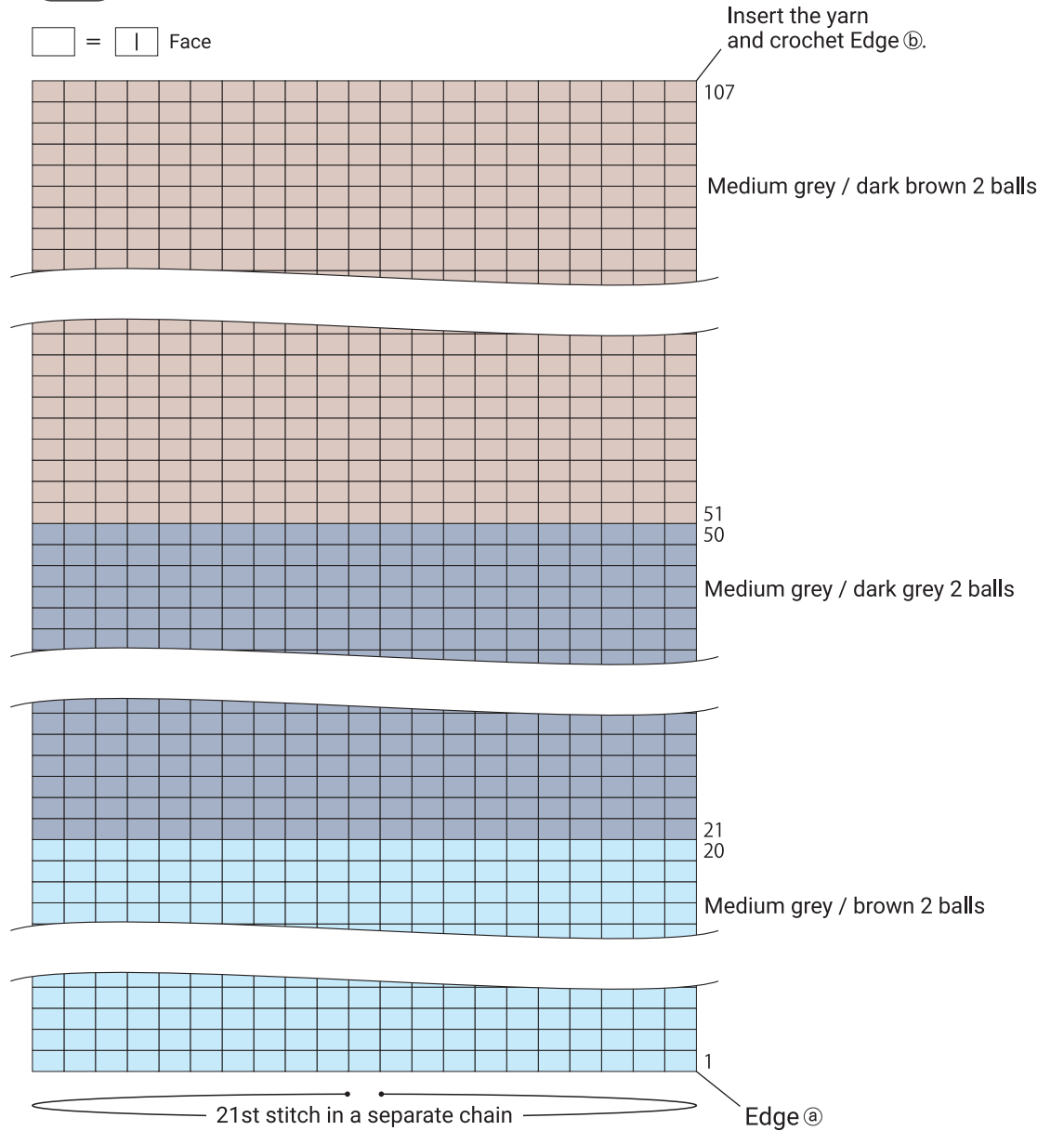


Exhaust Pipe / Joint



**A** Knitting needle No. 15

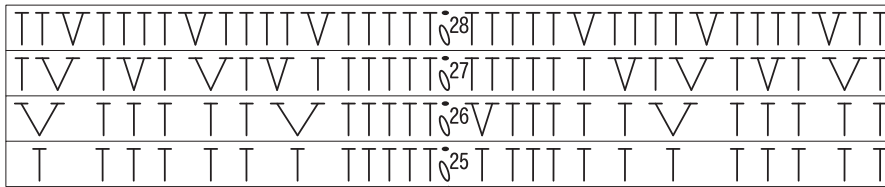
□ = □ Face



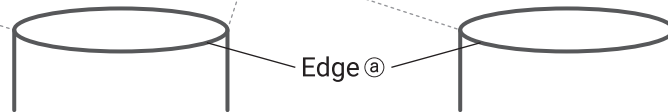
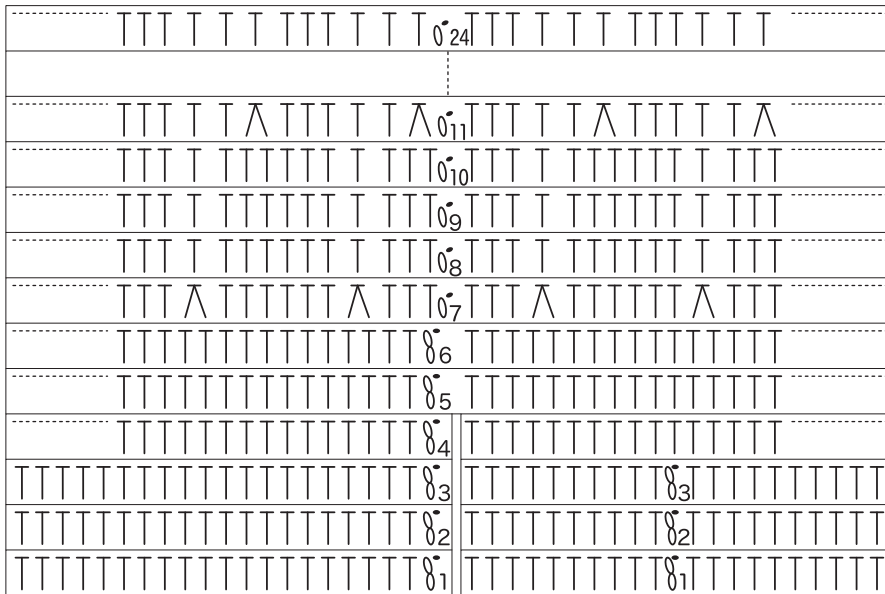
**B**

Hook 7/0  
Medium grey / brown 2 balls

Rows	Stitches	
31	42	
⋮	⋮	
28	42(+6)	
27	36(+8)	
26	28(+4)	
25	24	
24	24	
⋮	⋮	
11	24(-4)	
10	28	
9	28	
8	28(-4)	
7	32	
6	32	
5	32	
4	16(-5)	16(-5)
3	21	21
2	21	21
1	21	21



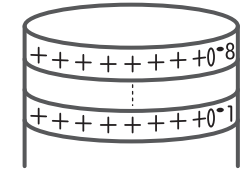
Insert the yarn at the middle of the back of row 24 and crochet.



**Edge ⑥**

Hook 7/0  
Medium grey / dark brown 2 balls

Rows	Stitches
8	21
⋮	⋮
1	21



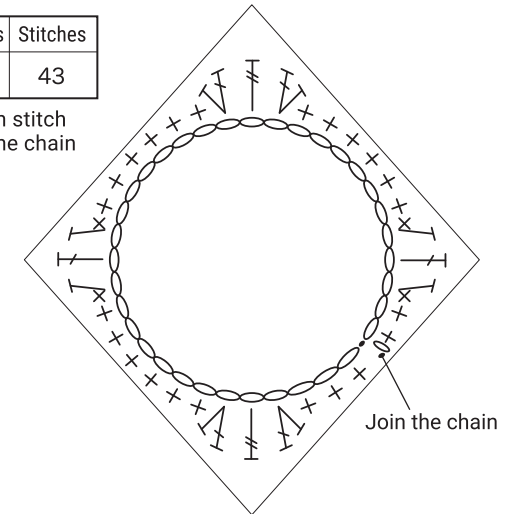
\*Insert the yarn on [A] and crochet 8 rounds of 21 stitches without increasing or decreasing.

**Ring Nut**

Hook 5/0  
Medium grey 1 ball

Rows	Stitches
1	43

\*35th stitch in the chain



- ① Leave 5 stitches open on the 4th row and pick up the 16th stitch from each side and crochet.
- ② Graft the stitches left open on each side 5 at a time.

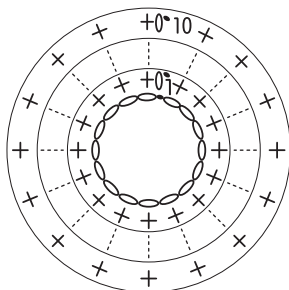


**Joint Pipe**

Hook 7/0  
Medium grey / dark grey 2 balls

Rows	Stitches
10	16
⋮	⋮
1	16

\*16th stitch in the chain



**C**

Hook 7/0  
Medium grey 2 balls

Rows	Stitches
20	6
⋮	⋮
1	6

\*6th stitch in the chain

