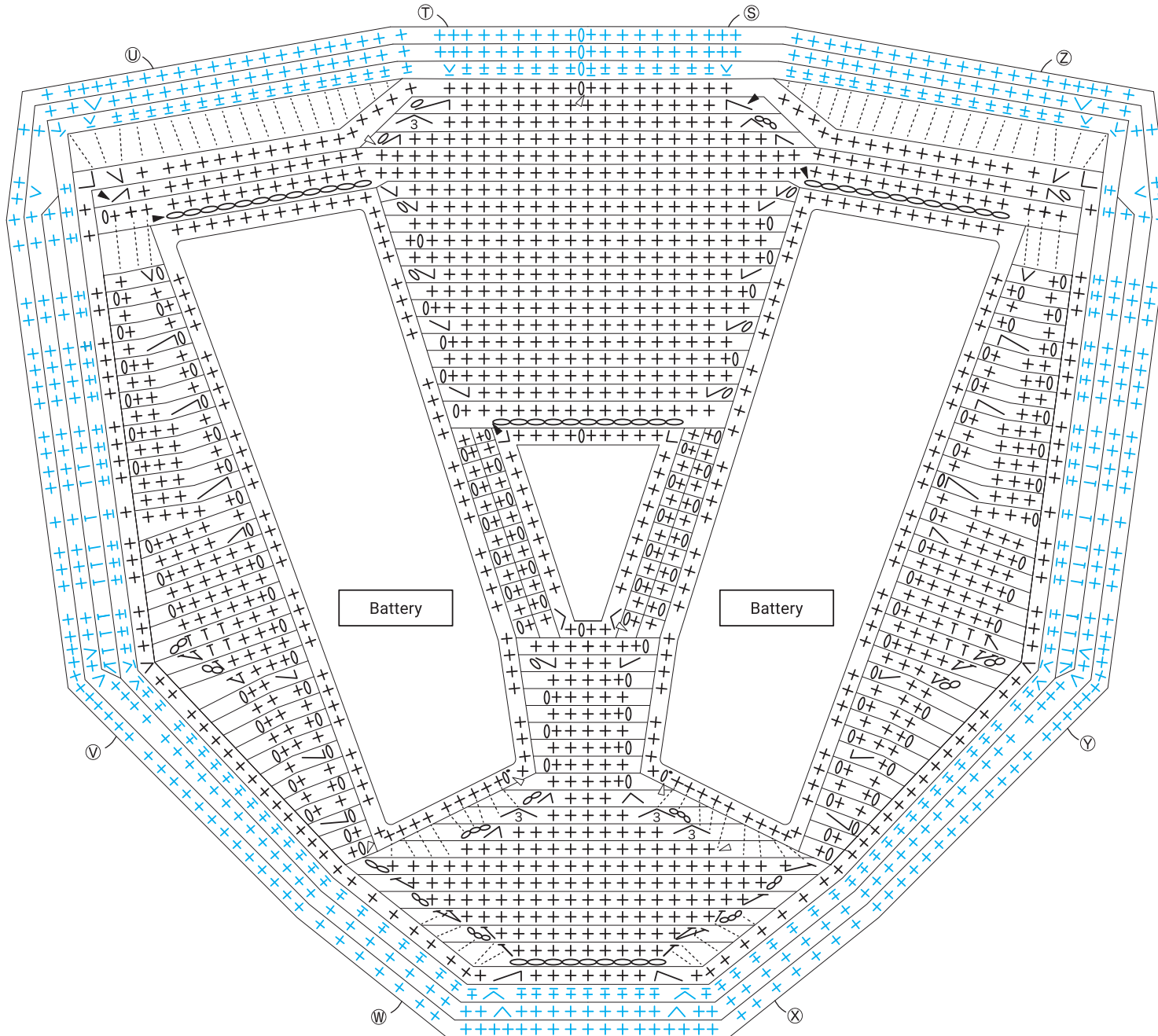


Body part A

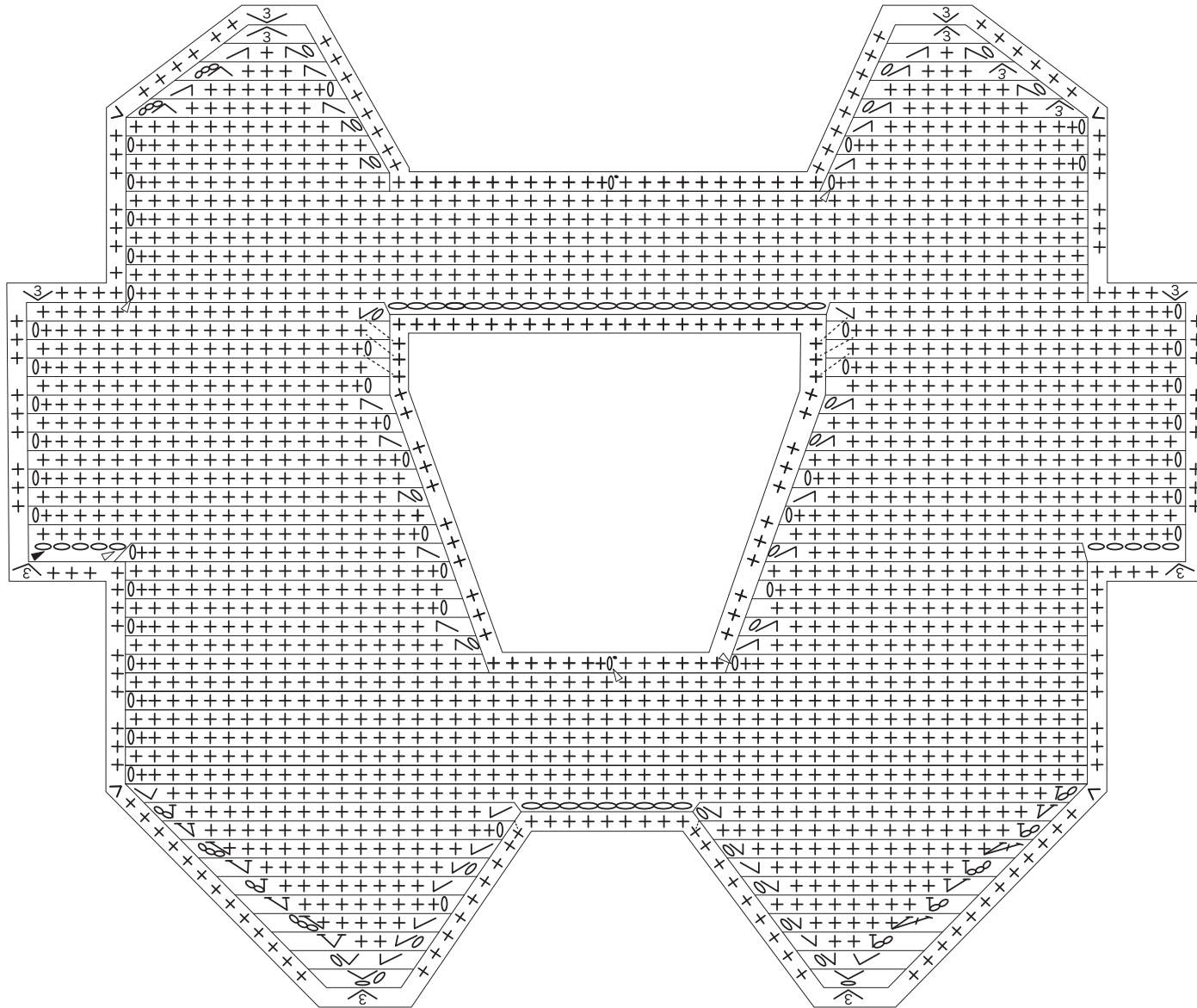
Black part: medium, white

Blue part:
medium,
combine black and grey,
hook 7/10



Bottom part A

Medium, combine black and grey, hook 7/10

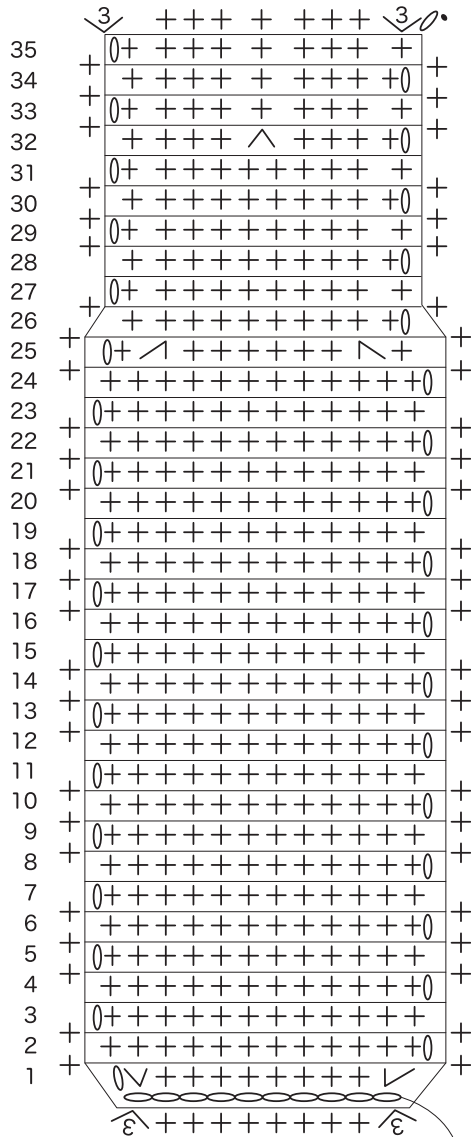


Body part B

Medium, combine 2 balls of back, hook 7/10

Rows	Stitches
35	9
34	∴
33	9
32	9 (-1)
31	10
∴	∴
25	10 (-2)
24	12
∴	∴
1	12

*ch10



Crochet start

Body part C

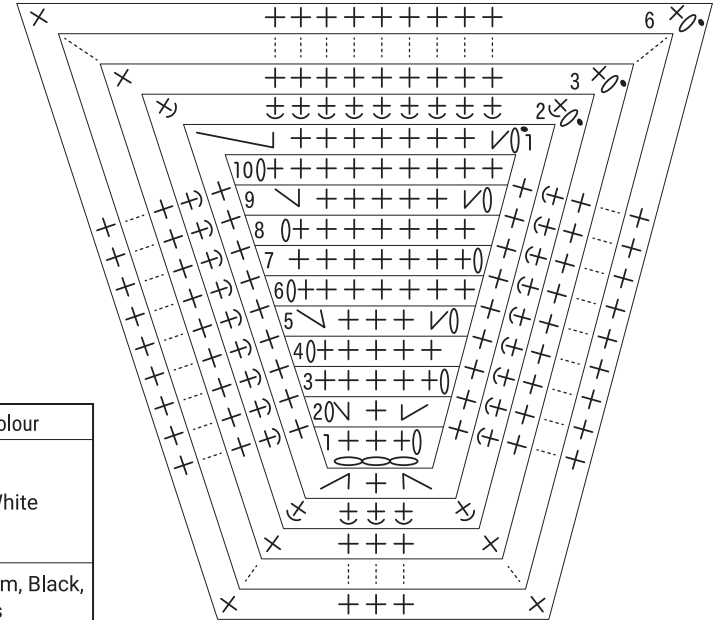
7/10

Rows	Stitches	Colour
10	9	Medium, Black, 2 balls
9	9 (+2)	
8	7 (+2)	
7	7	
6	7	
5	7 (+2)	
4	5	
3	5	
2	5 (+2)	
1	3	

*ch3

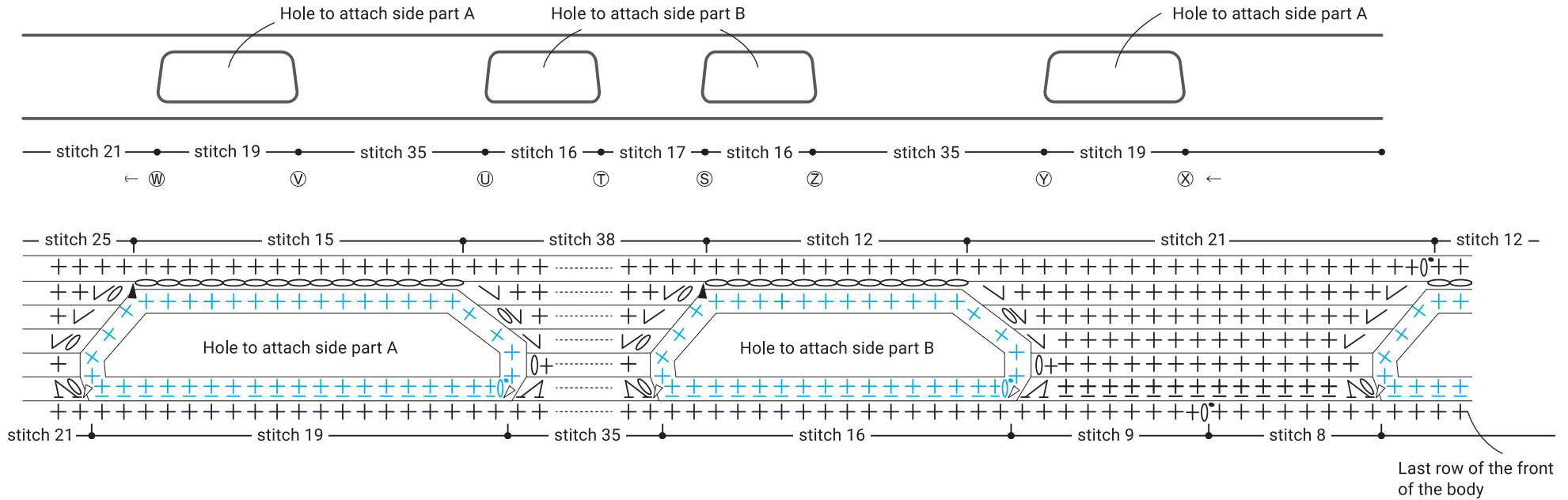
Rows	Stitches	Colour
6	34	White
∴	∴	
3	34	
2	34	Front bpsc
1	34	Medium, Black, 2 balls

*edging stitch



Body part A edge

Medium, combine black and grey, hook 7/10

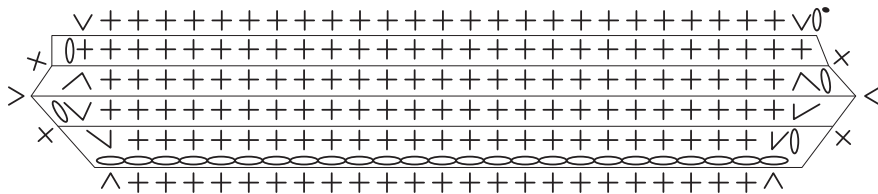


Side part A

Medium, black 1 ball, 2 4/0 hooks

Rows	Stitches
4	27
3	27 (-2)
2	29 (+2)
1	27

*ch25

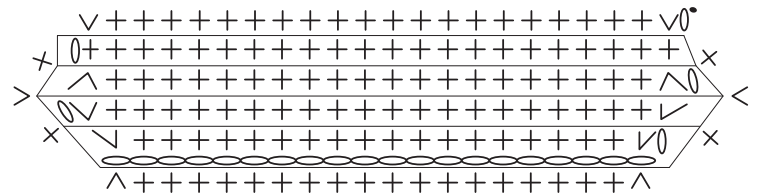


Side part B

Medium, black 1 ball, 2 4/0 hooks

Rows	Stitches
4	22
3	22 (-2)
2	24 (+2)
1	22

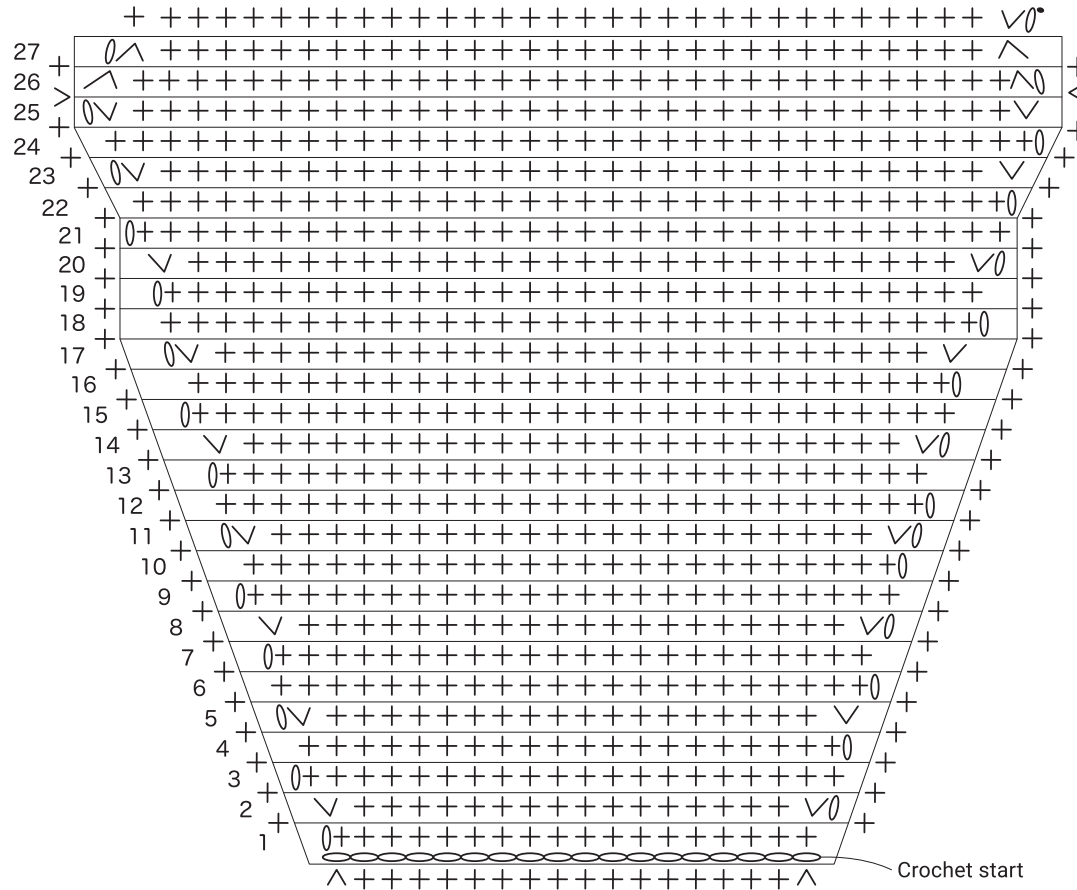
*ch20



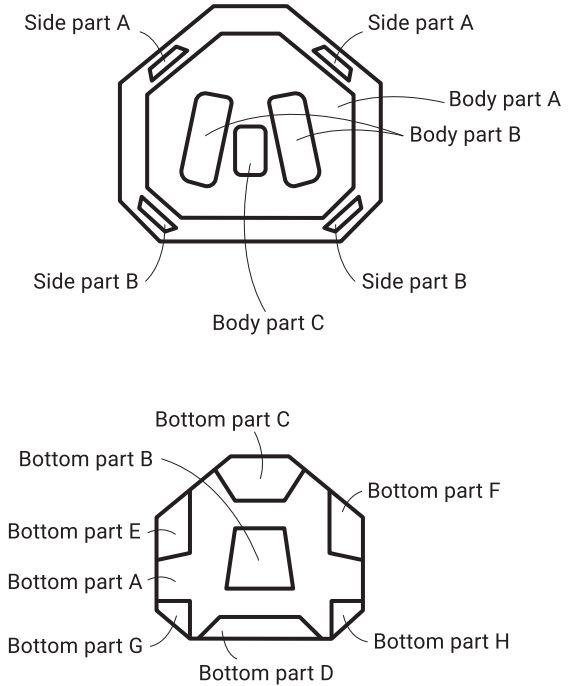
Bottom part B Medium, black 1 ball, hook 4/0

Rows	Stitches
27	32 (-2)
26	34 (-2)
25	36 (+2)
24	34
23	34 (+2)
22	32
21	32
20	32 (+2)
19	30
18	30
17	30 (+2)
16	28
15	28
14	28 (+2)
13	26
12	26
11	26 (+2)
10	24
9	24
8	24 (+2)
7	22
6	22
5	22 (+2)
4	20
3	20
2	20 (+2)
1	18

*ch18



Position to attach side/bottom part

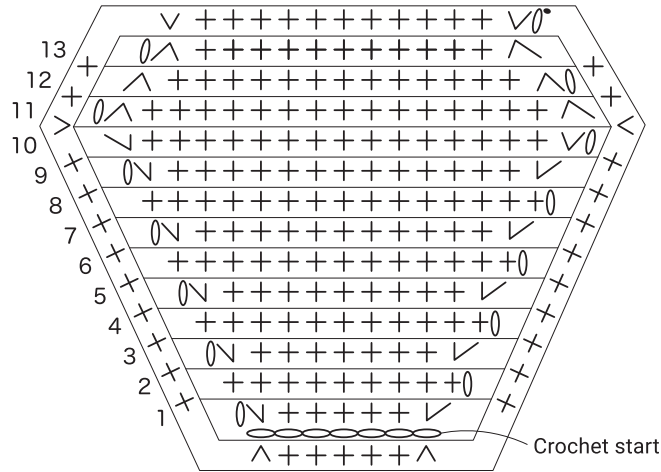


Bottom part C

Medium, combine black and grey, hook 7/10

Rows	Stitches
13	13 (-2)
12	15 (-2)
11	17 (-2)
10	19 (+2)
9	17 (+2)
8	15
7	15 (+2)
6	13
5	13 (+2)
4	11
3	11 (+2)
2	9
1	9

*ch7

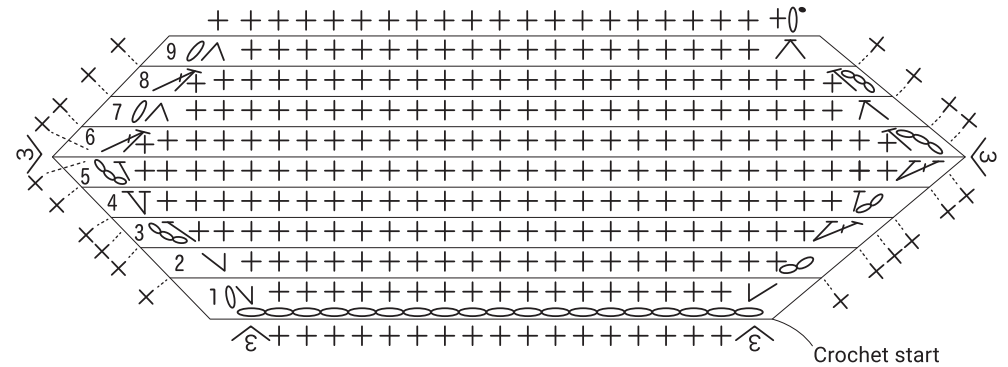


Bottom part D

Medium, combine black and grey, hook 7/10

Rows	Stitches
9	21 (-2)
8	23 (-4)
7	27 (-2)
6	29 (-4)
5	33 (+4)
4	29 (+2)
3	27 (+4)
2	23 (+2)
1	21

*ch19

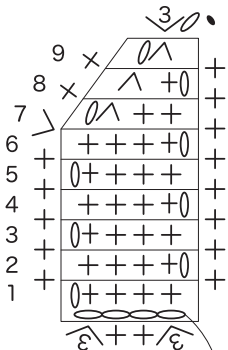


Bottom part E

Medium, combine black and grey, hook 7/10

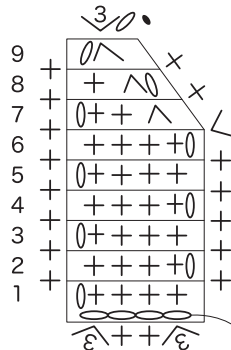
Rows	Stitches
9	1 (-1)
8	2 (-1)
7	3 (-1)
6	4
⋮	⋮
1	4

*ch4



Bottom part F

Medium, combine black and grey, hook 7/10

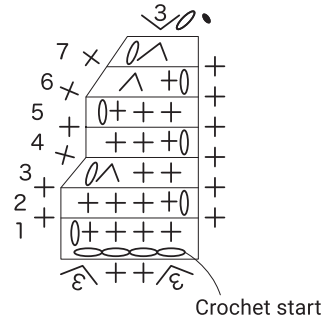


Bottom part H

Medium, combine black and grey, hook 7/10

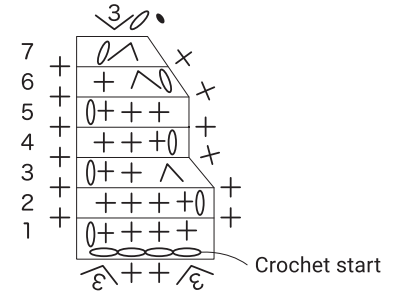
Rows	Stitches
7	1 (-1)
6	2 (-1)
5	3
4	3
3	3 (-1)
2	4
1	4

*ch4



Bottom part G

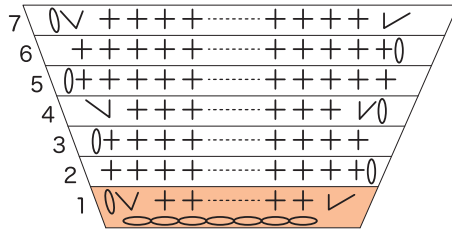
Medium, combine black and grey, hook 7/10



Caution label

Fine, white/orange 1 ball, hook 4/0

Rows	Stitches	Colour
7	31 (+2)	White
6	29	
5	29	
4	29 (+2)	
3	27	
2	27	
1	27	Orange



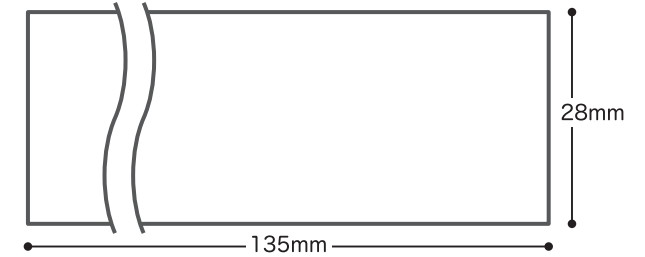
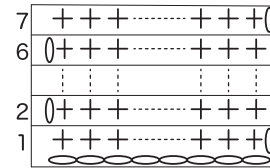
*ch25

Product logo part

Fine, white 1 ball, hook 4/0

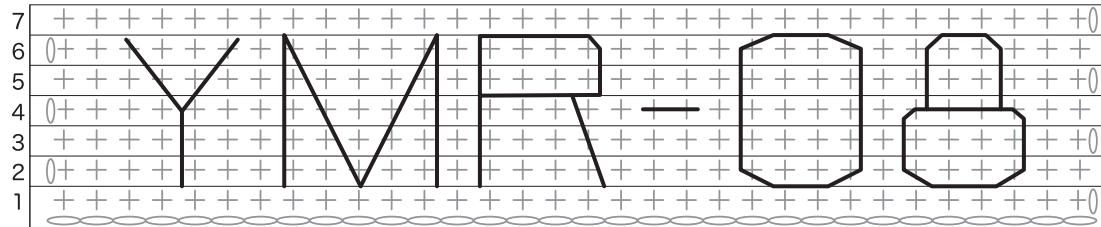
Rows	Stitches
7	32
⋮	⋮
1	32

*ch32

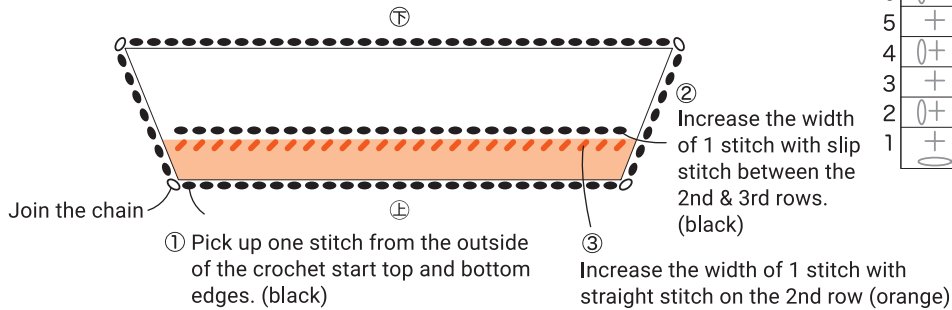


Embroidery

Fine, grey with chain stitch



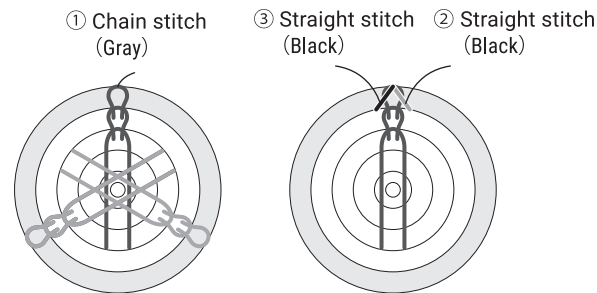
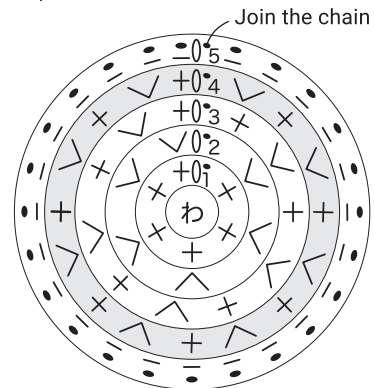
Light, black 1 ball, hook 4/0; fine, orange



Tuning fork

Embroidery thread, black/grey, hook 2/0

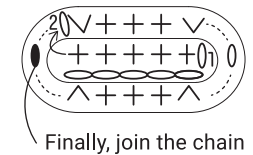
Rows	Stitches	Colour
5	24 Slip stitch with bpsc	Black
4	24(+6)	Gray
3	18(+6)	Black
2	12(+6)	
1	6	



*Turn 120 degrees and embroider three tuning forks the same

Lamp

Fine, grey 1 ball, hook 4/0



Finally, join the chain

