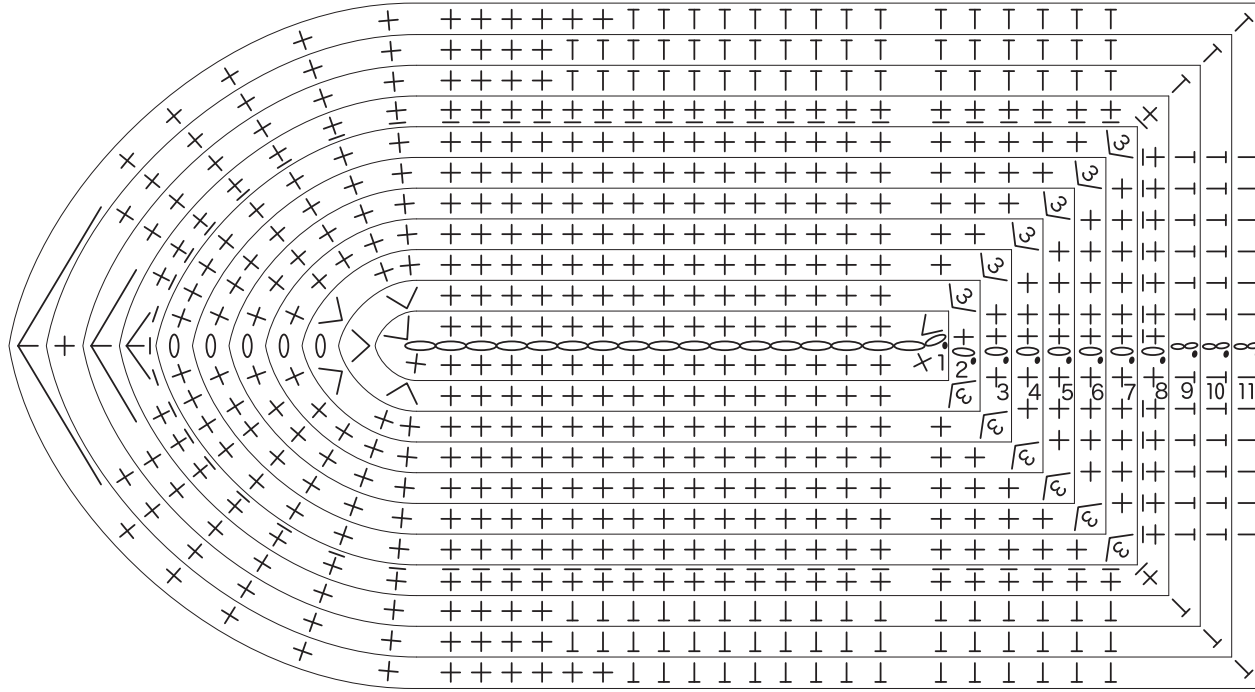


Hull (Upper) 10ply 5/0 x1

| Rows | Stitches | Col |
|------|----------|-----------|
| 11 | 68(-2) | Navy blue |
| 10 | 70 | |
| 9 | 70(-2) | |
| 8 | 72(-2) * | |
| 7 | 74(+6) | White |
| 6 | 68(+6) | |
| 5 | 62(+6) | |
| 4 | 56(+6) | |
| 3 | 50(+7) | |
| 2 | 43(+7) | |
| 1 | 36 | |

※ ch17 *bpsc

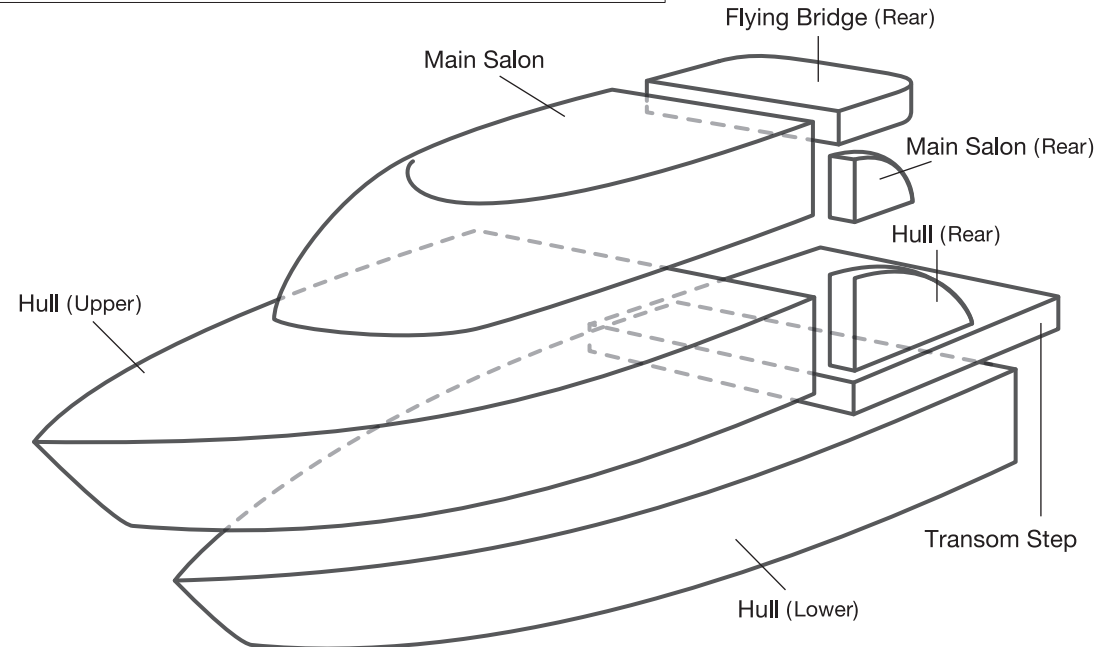
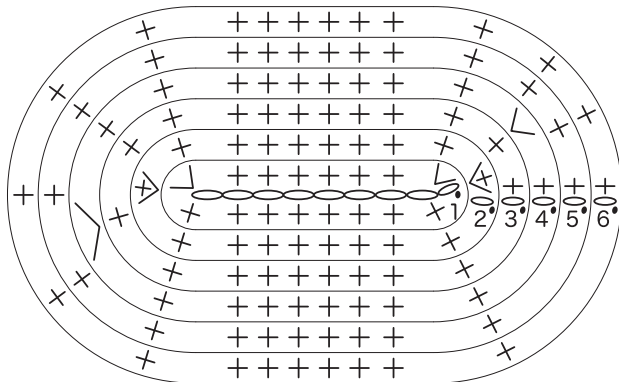


Flying Bridge (Rear) 10ply 5/0 White x1

| Rows | Stitches |
|------|----------|
| 6 | 22 |
| 5 | 22 |
| 4 | 22(+2) |
| 3 | 20 |
| 2 | 20(+2) |
| 1 | 18 |

※ ch8

Insert cardboard e and stuffing.

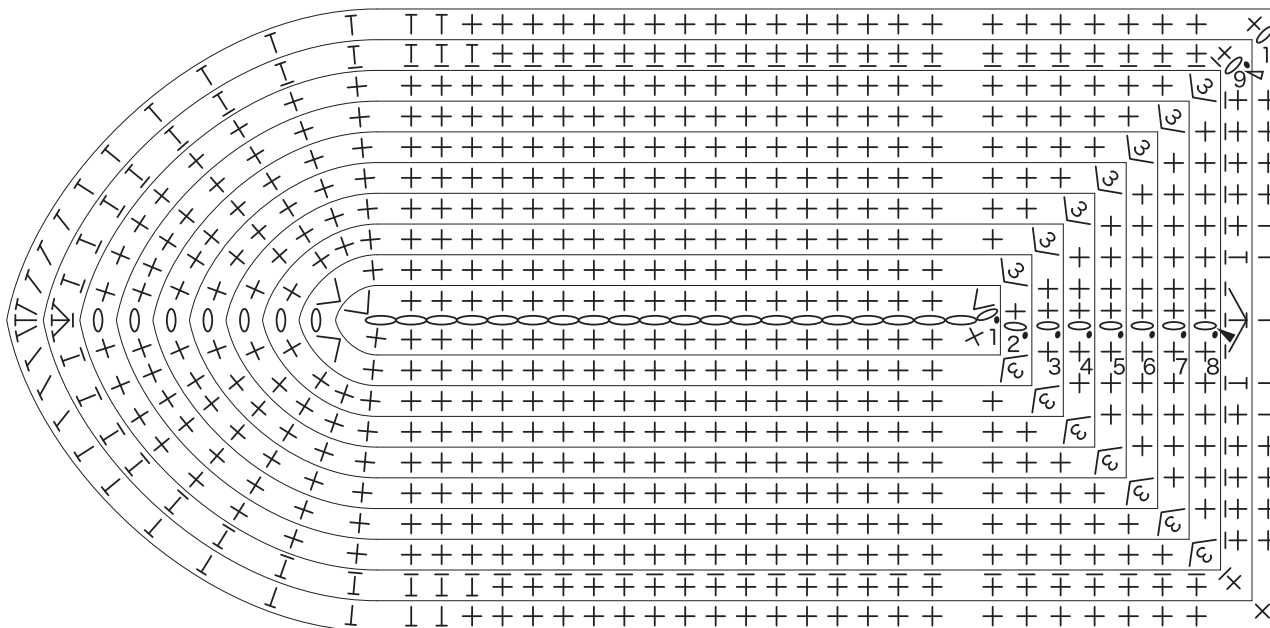


Hull (Lower)

10ply 5/0 White x1

| Rows | Stitches |
|------|----------|
| 10 | 86(+2) |
| 9 | 84 * |
| 8 | 84(+4) |
| 7 | 80(+6) |
| 6 | 74(+6) |
| 5 | 68(+6) |
| 4 | 62(+6) |
| 3 | 56(+6) |
| 2 | 50(+8) |
| 1 | 42 |

※ ch20 *bpsc

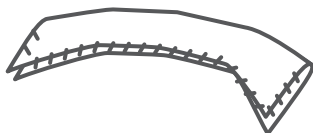
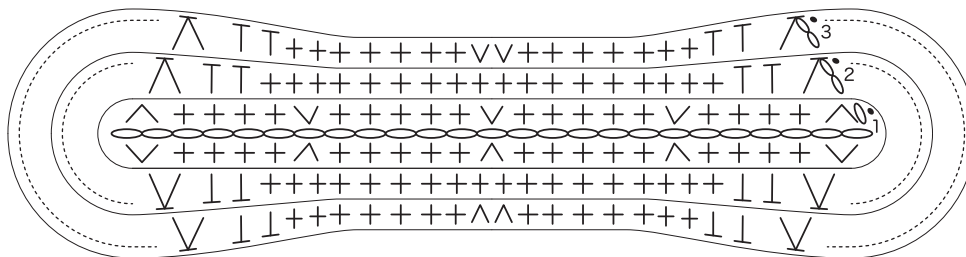


Radar Gate

4ply 3/0 White x1

| Rows | Stitches |
|------|----------|
| 3 | 48 |
| 2 | 48(-4) |
| 1 | 52 |

※ ch25

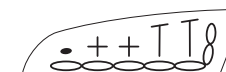


Fold in half and sew up the edges.

Radar Gate Sidepart

4ply 3/0 each 1

Left pattern Navy blue



Right pattern Navy blue



Left base White



Right base White



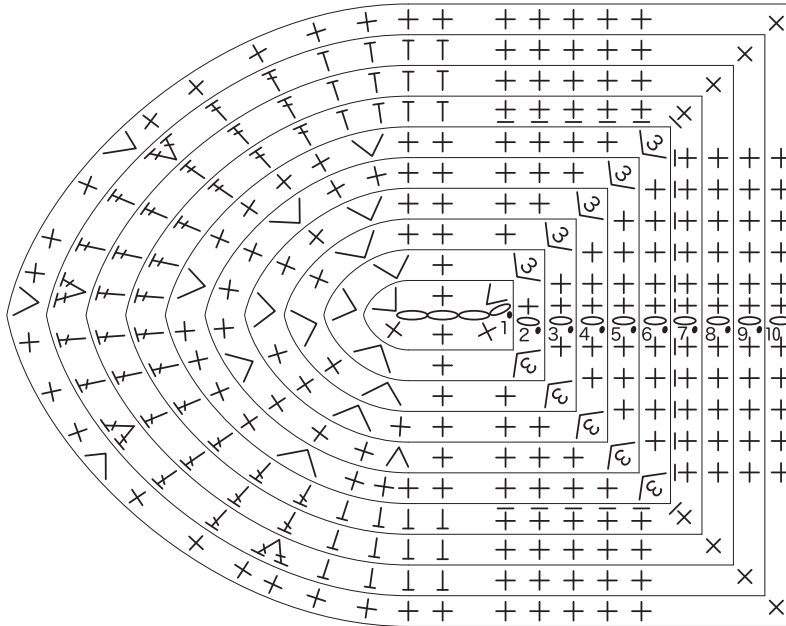
Sew the pattern onto the base.

Main Saloon

10ply 5/0 White x1

| Rows | Stitches |
|------|----------|
| 10 | 50(+3) |
| 9 | 46(+3) |
| 8 | 43 |
| 7 | 43 * |
| 6 | 43(+7) |
| 5 | 36(+7) |
| 4 | 29(+7) |
| 3 | 22(+7) |
| 2 | 15(+7) |
| 1 | 8 |

※ ch3 *bpsc

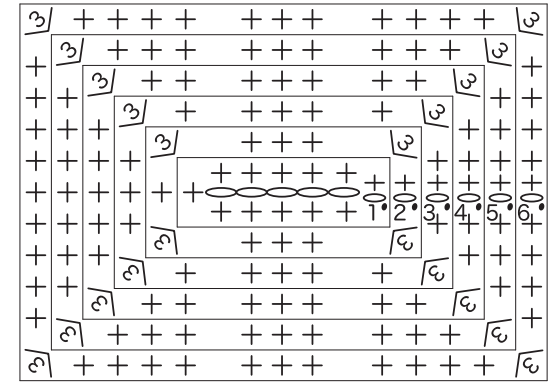


Transom Step

10ply 5/0 White x2

| Rows | Stitches |
|------|----------|
| 6 | 52(+8) |
| 5 | 44(+8) |
| 4 | 36(+8) |
| 3 | 28(+8) |
| 2 | 20(+8) |
| 1 | 12 |

※ ch5



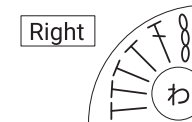
Sew the three sides together and insert cardboard d

Main Saloon (Rear)

10ply 3/0 White each 1



Left



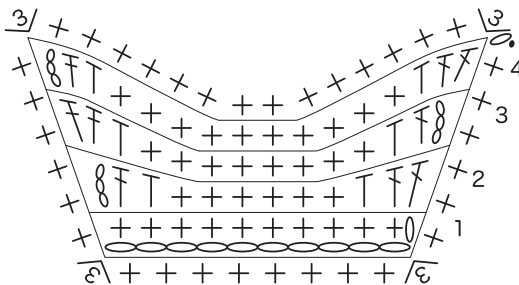
Right

Front Window

8ply 3/0 Pale blue x1

| Rows | Stitches |
|------|----------|
| 4 | 16(+2) |
| 3 | 14(+2) |
| 2 | 12(+2) |
| 1 | 10 |

※ ch10
※ Crochet the edge.

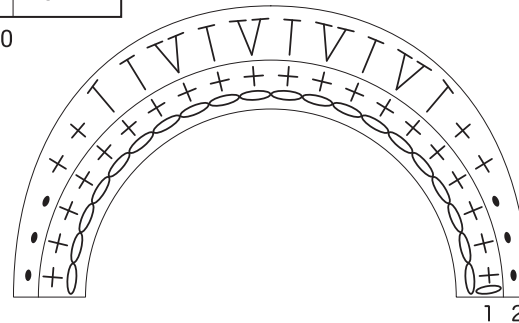


Wind Shield

8ply 3/0 Pale blue x1

| Rows | Stitches |
|------|----------|
| 2 | 24(+4) |
| 1 | 20 |

※ ch20

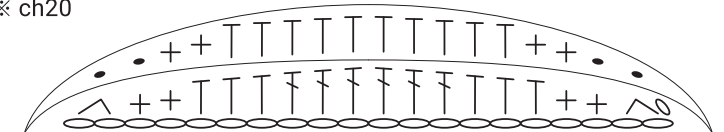


Side Window

8ply 3/0 Pale blue x2

| Rows | Stitches |
|------|----------|
| 2 | 18 |
| 1 | 18 |

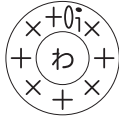
※ ch20



Sky Light Hatch

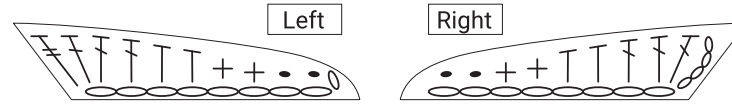
8ply 3/0 Grey x1

| Rows | Stitches |
|------|----------|
| 1 | 8 |



Ocean View Porthole

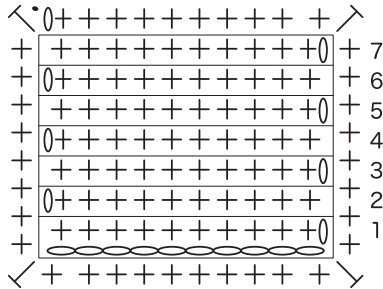
8ply 3/0 Grey each 1



Slide Door

8ply 3/0 Pale blue x1

| Rows | Stitches |
|------|----------|
| 7 | 10 |
| ⋮ | ⋮ |
| 1 | 10 |



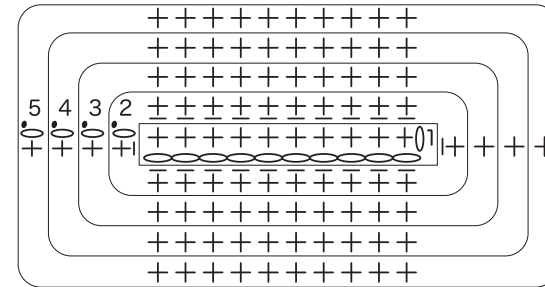
※ ch10
※ Crochet the edge.

Aft Hatch

4ply 3/0 White x1

| Rows | Stitches |
|------|-----------|
| 5 | 22 |
| 4 | 22 |
| 3 | 22 |
| 2 | 22(+12) * |
| 1 | 10 |

※ ch10 *bpsc

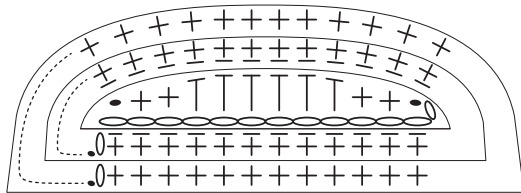


Cockpit

4ply 3/0 White x1

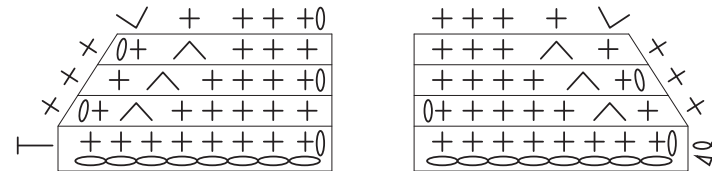
| Rows | Stitches |
|------|-----------|
| 3 | 24 |
| 2 | 24(+12) * |
| 1 | 12 |

※ ch12 *bpsc



Hull (Rear)

10ply 5/0 White/Navy blue each 2



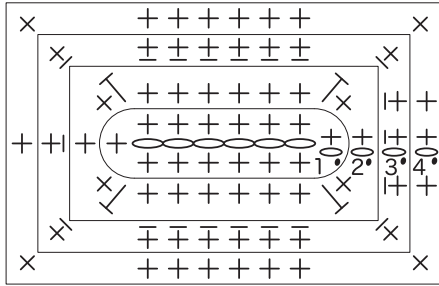
Upstairs lounge seat

4ply 3/0 White each1

Seat

| Rows | Stitches |
|------|----------|
| 4 | 22 |
| 3 | 22 * |
| 2 | 22(+8) |
| 1 | 14 |

※ ch6 *bpsc



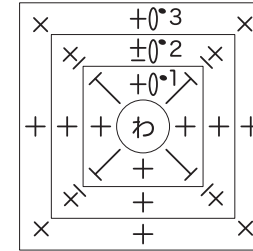
Upstairs seats

4ply 3/0 White each2

Seat

| Rows | Stitches |
|------|----------|
| 3 | 8 |
| 2 | 8 * |
| 1 | 8 |

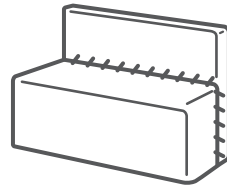
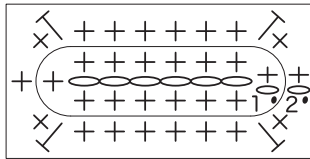
*bpsc



Back

| Rows | Stitches |
|------|----------|
| 2 | 22(+8) |
| 1 | 14 |

※ ch6

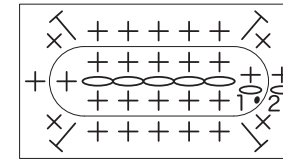


Sew the back to the seat.

Back

| Rows | Stitches |
|------|----------|
| 2 | 20(+8) |
| 1 | 12 |

※ ch5

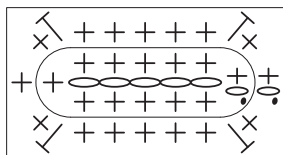


Sew the back to the seat.

Engine Propeller

4ply 3/0 Golden yellow

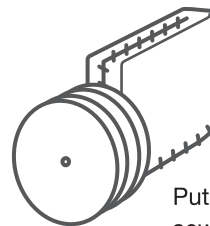
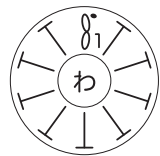
Axis x 2



Fold in half and sew up.

Propeller x 4

| Rows | Stitches |
|------|----------|
| 1 | 10 |



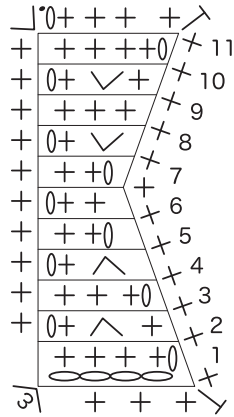
Put the two propellers together and sew onto the corner of the axis.

Plinth Part

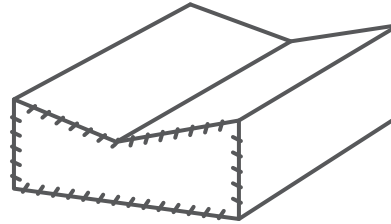
10ply 5/0 Grey each 2

| Rows | Stitches |
|------|----------|
| 11 | 4 |
| 10 | 4(+1) |
| 9 | 3 |
| 8 | 3(+1) |
| 7 | 2 |
| 6 | 2 |
| 5 | 2 |
| 4 | 2(-1) |
| 3 | 3 |
| 2 | 3(-1) |
| 1 | 4 |

※ ch4

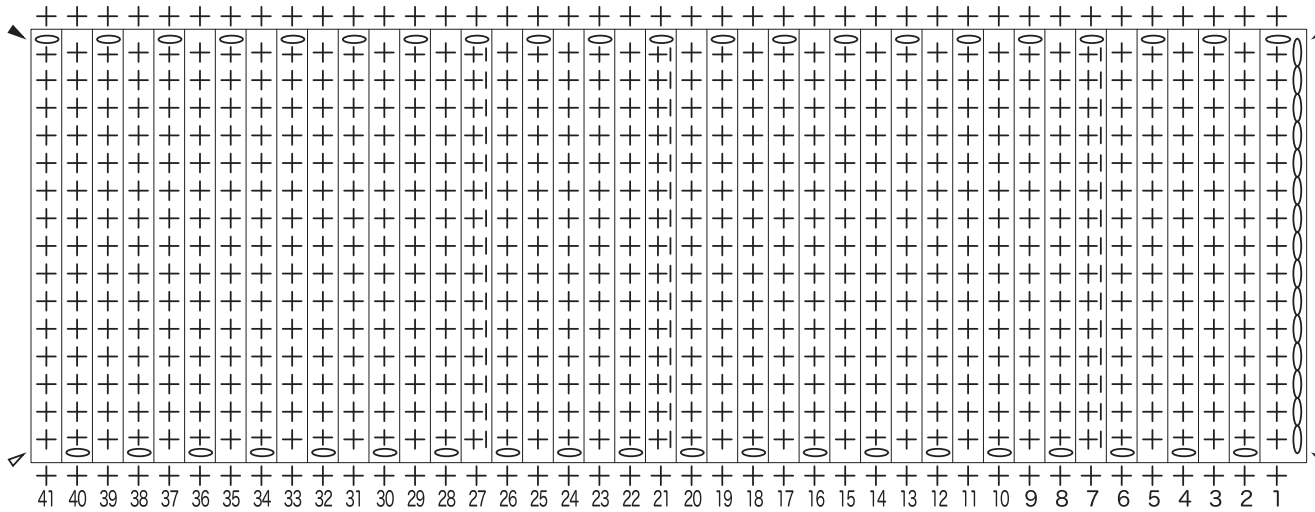


Insert the pattern and stuffing and sew up.



| Rows | Stitches |
|------|----------|
| 41 | 15 |
| ⋮ | ⋮ |
| 1 | 15 |

※ ch15



Cardboard pattern

— actual size —

