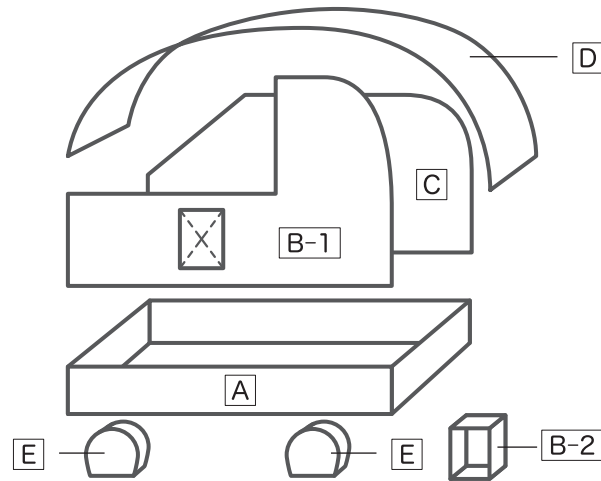


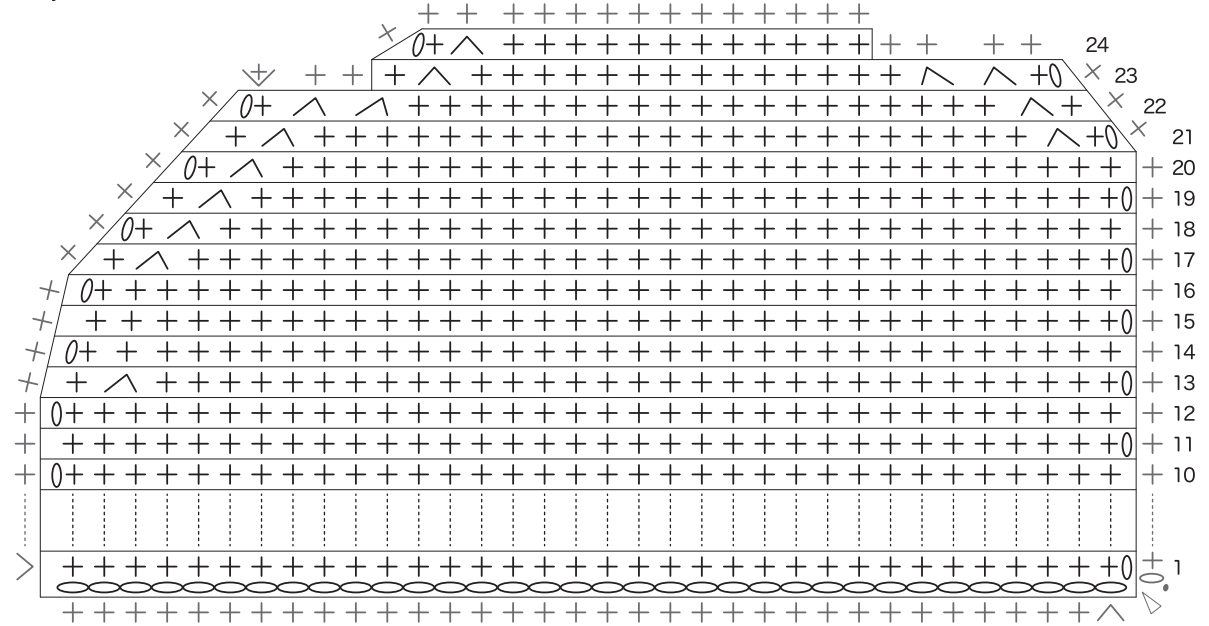
Body

Body C Super Bulky 8mm Blue x 1



Rows	Stitches
24	14(-5)
23	19(-5)
22	24(-3)
21	27(-2)
20	29(-1)
19	30(-1)
18	31(-1)
17	32(-1)
16	33
15	33
14	33
13	33(-1)
12	34
...	...
1	34

※ ch34

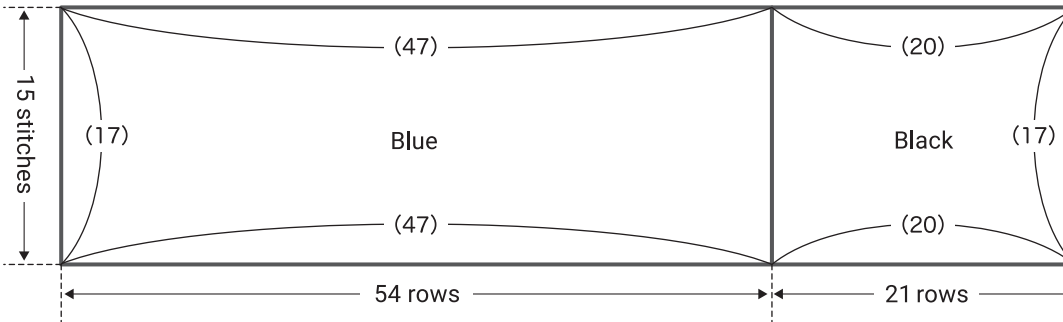


※ Crochet evenly around

Body D Super Bulky 8mm x 1

Rows	Stitches	Col
75	15	Black
...	...	
55	15	
54	15	Blue
...	...	
1	15	

※ Use stitch 15 as the starter
Crochet in short rows
Lastly, crochet evenly around

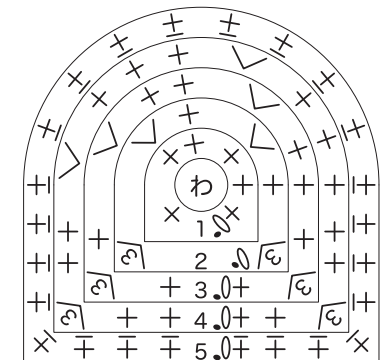


The numbers in () are a combination of the average of edging and decreasing

Body E 10ply 6/0 Charcoal x 4

Rows	Stitches
5	24 *
4	24(+6)
3	18(+6)
2	12(+6)
1	6

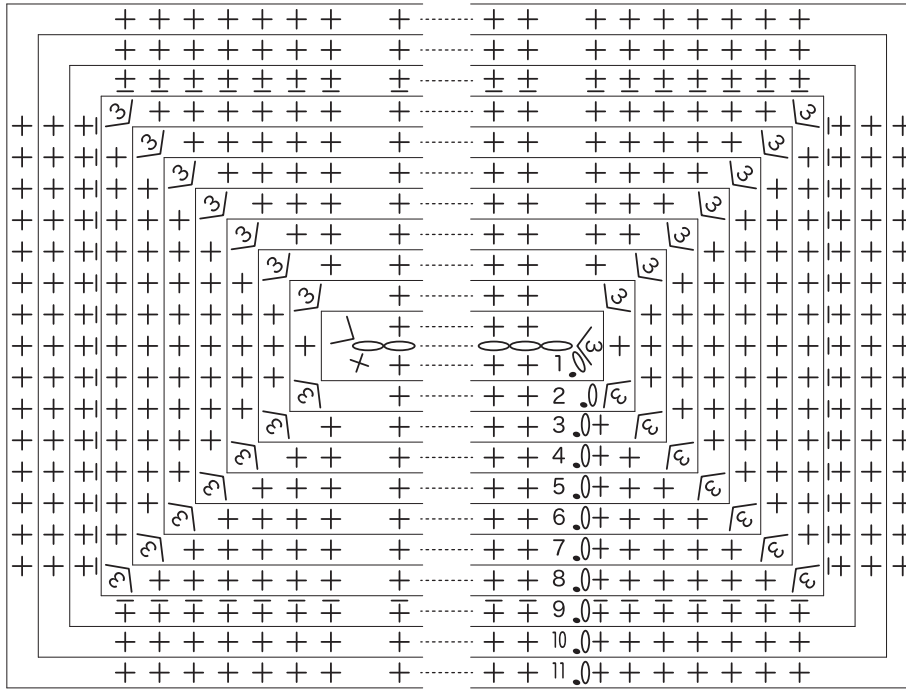
* bpsc



Body **A** Super Bulky 8mm Black x1

Rows	Stitches
11	94
10	94
9	94(-4) *
8	98(+8)
7	90(+8)
6	82(+8)
5	74(+8)
4	66(+8)
3	58(+8)
2	50(+8)
1	42

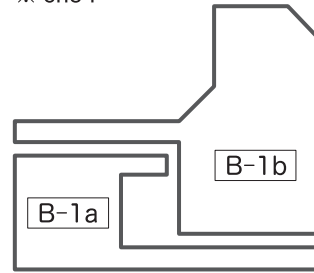
※ ch20 * bpsc



Body **B-1a** Super Bulky 8mm Blue x1

Rows	Stitches
8	17(+5)
7	12
⋮	⋮
2	12(-22)
1	34

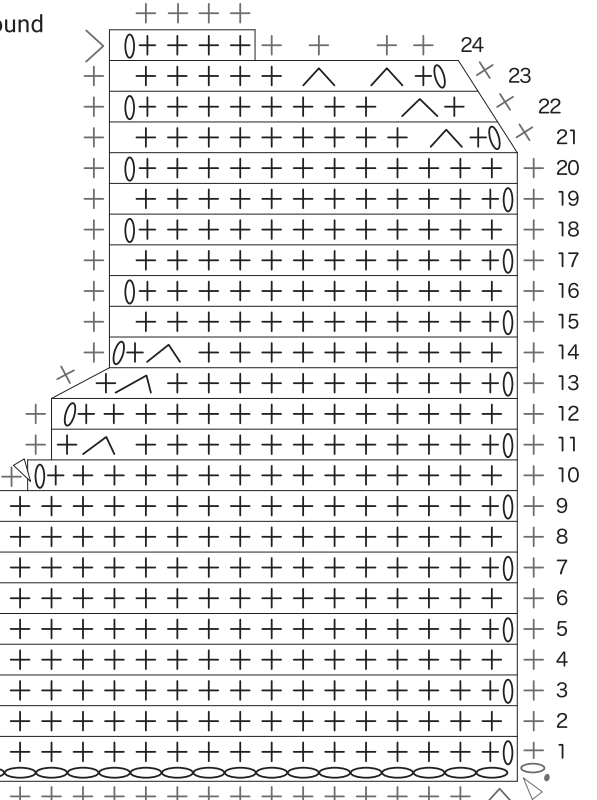
※ ch34



※ Crochet evenly around

Body **B-1b** Super Bulky 8mm Blue x1

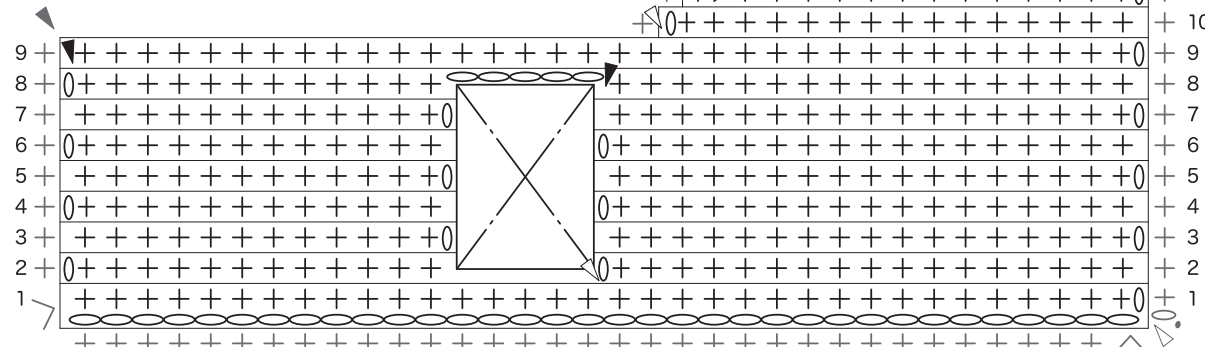
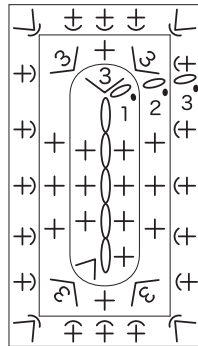
Rows	Stitches
24	4(-4)
23	8(-2)
22	10(-1)
21	11(-1)
20	12
⋮	⋮
14	12(-1)
13	13(-1)
12	14
11	14(-1)
10	15(-19)
9	34(+17)
8	17
⋮	⋮
2	17



Body **B-2** Super Bulky 8mm Blue x1

Rows	Stitches
3	24(+4) *
2	20(+8)
1	12

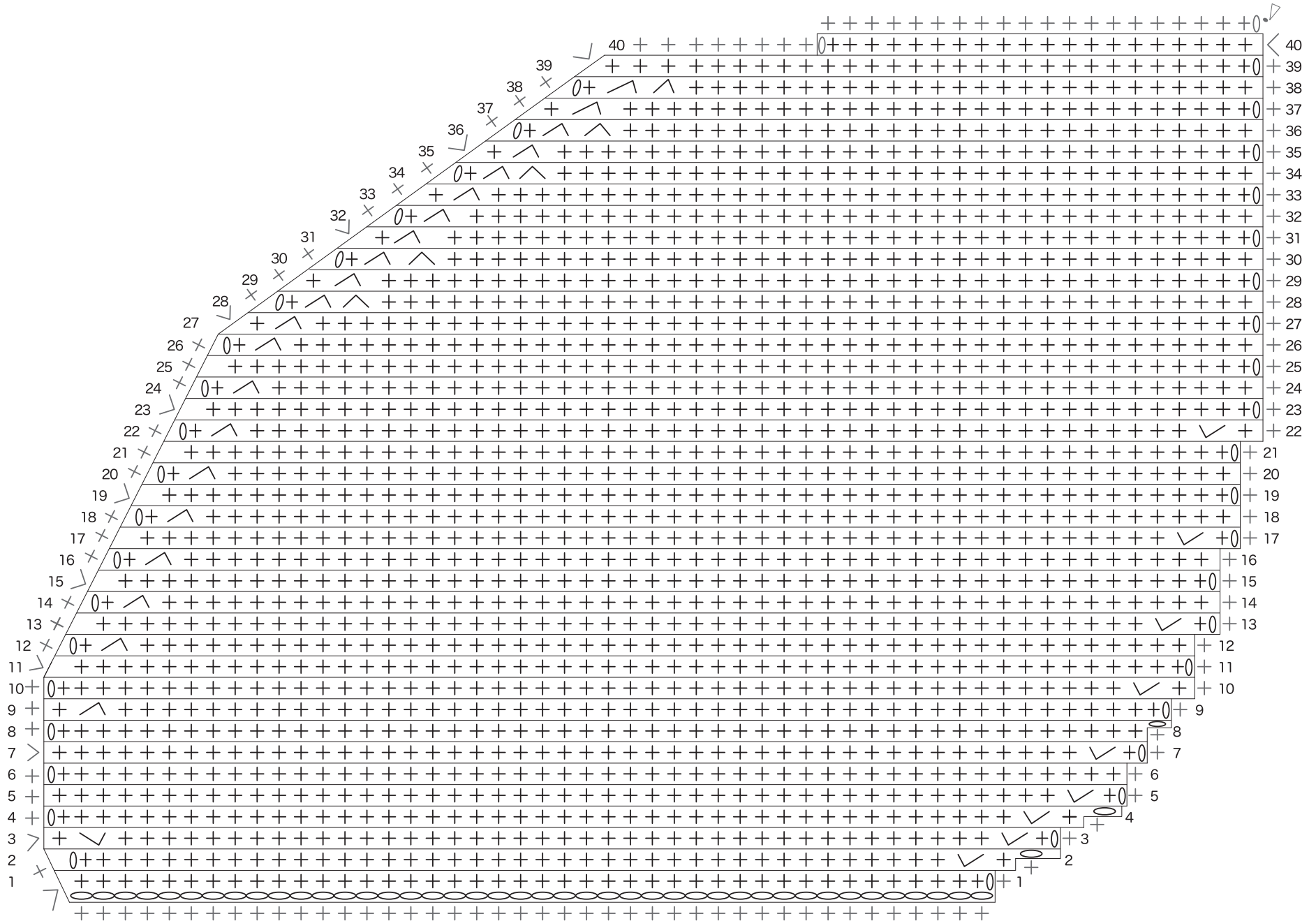
※ ch5 * fpssc



Control panel

Rows	Stitches
40	20
39	29
38	29(-2)
37	31(-1)
36	32(-2)
35	34(-1)
34	35(-2)
33	37(-1)
32	38(-1)
31	39(-1)
30	40(-2)
29	42(-1)
28	43(-2)
27	45(-2)
26	46(-1)
25	47
24	47(-1)
23	48(+1)
22	48
21	48
20	48(-1)
19	49
18	49(-1)
17	50
16	49(-1)
15	50
14	50(-1)
13	51
12	50(-1)
11	51(+1)
10	50
9	50
8	50
7	50(+1)
6	49
5	49(+1)
4	48(+2)
3	46(+2)
2	44(+2)
1	42

※ ch42
 ※ Crochet evenly around

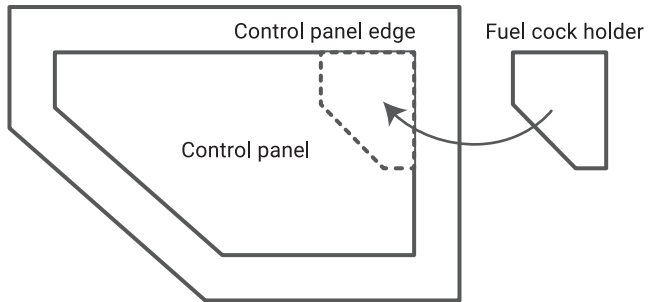
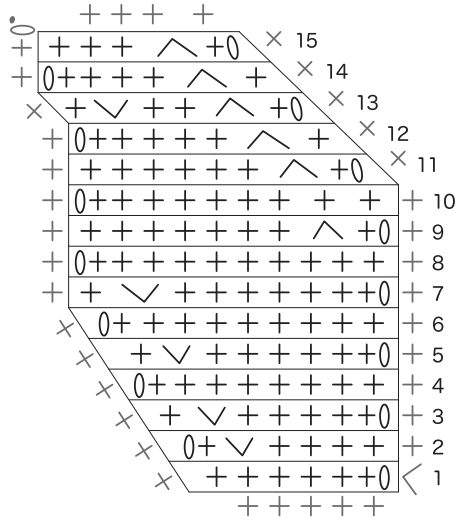


Fuel cock holder

10ply 6/0 Grey x1

※ Graft to control panel

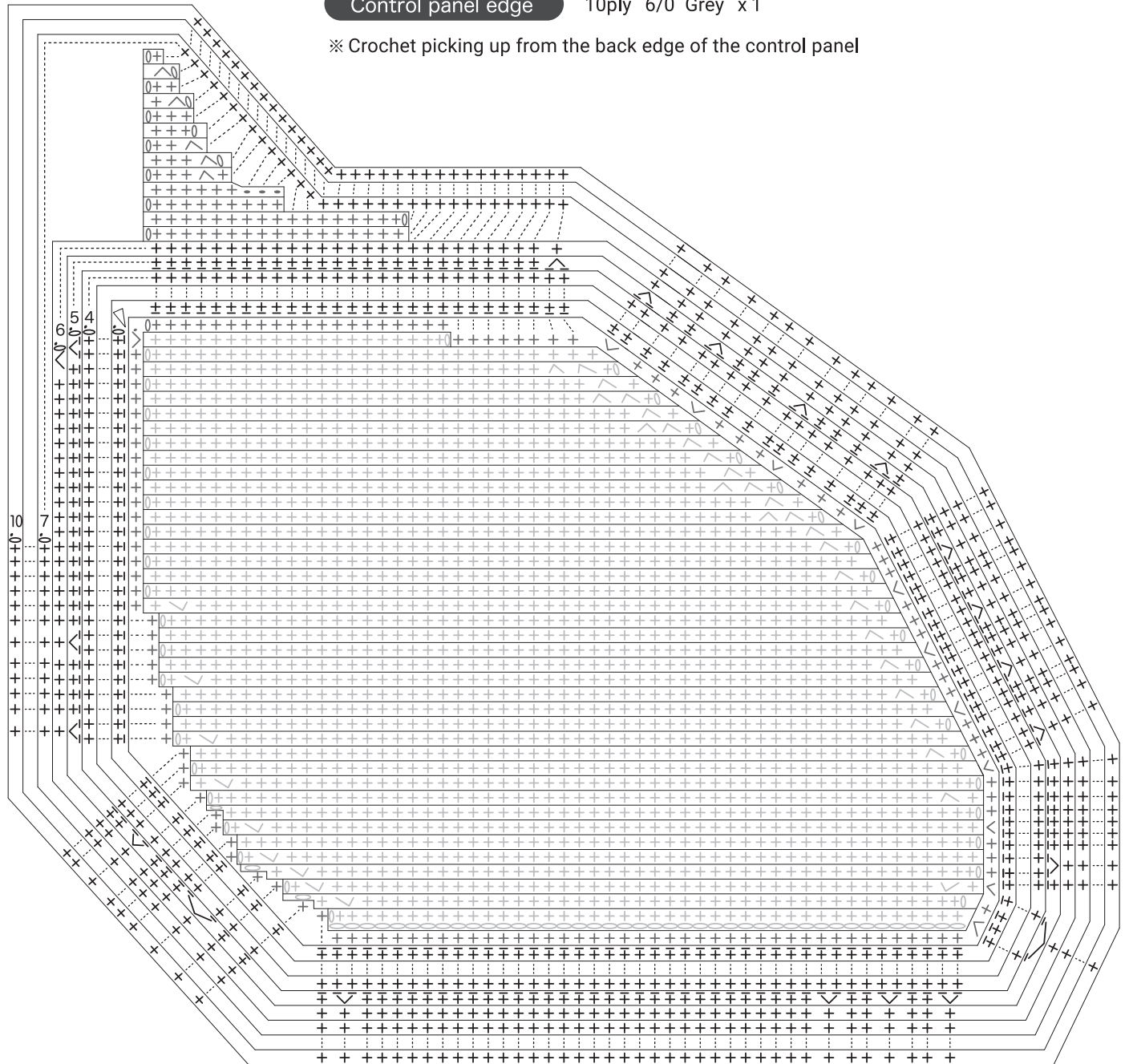
Rows	Stitches
15	5(-1)
14	6(-1)
13	7
12	7(-1)
11	8(-1)
10	9
9	9(-1)
8	10
7	10(+1)
6	9
5	9(+1)
4	8
3	8(+1)
2	7(+1)
1	6



Control panel edge

10ply 6/0 Grey x1

※ Crochet picking up from the back edge of the control panel

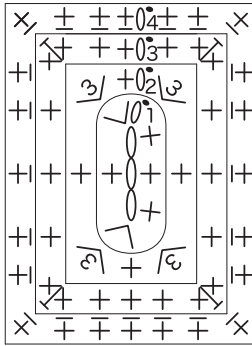


DC outlet

8ply 3/0 Black x1

Rows	Stitches
4	24 *
3	24(+8)
2	16(+8)
1	8

※ ch3 * bpsc

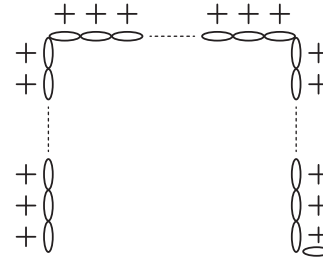


Protector

8ply 3/0 Black x1

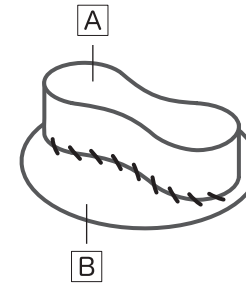
Rows	Stitches
1	42

※ ch42



Fuel cock

8ply 3/0



Stuff [A] and graft to [B]

[A] Black x1

Rows	Stitches
4	22
3	22
2	22 *
1	22

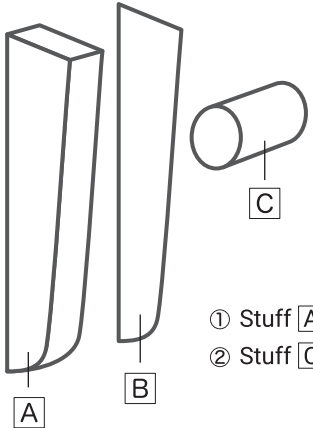
※ ch8 * bpsc

[B] Black x1

Rows	Stitches
5	30(+6)
4	24(+6)
3	18(+6)
2	12(+6)
1	6

Starter handle

8ply 3/0



[A] Black x1

Rows	Stitches
3	35
2	35 *
1	35

※ ch14 * bpsc

[B] Black x1

Rows	Stitches
1	35

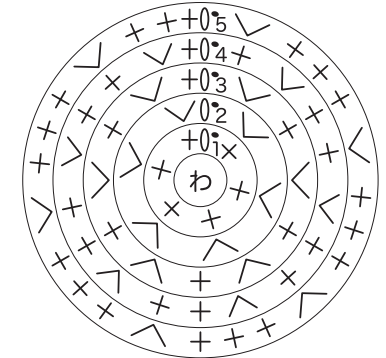
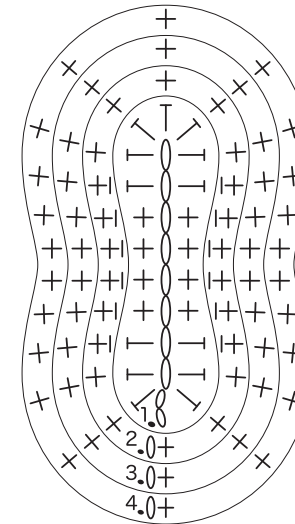
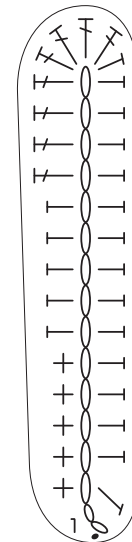
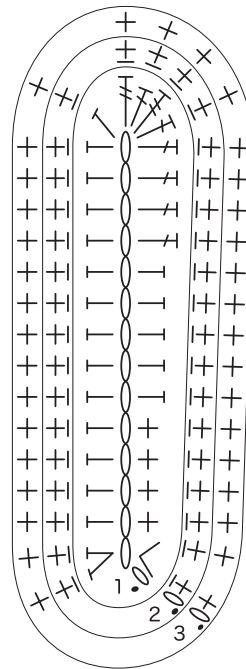
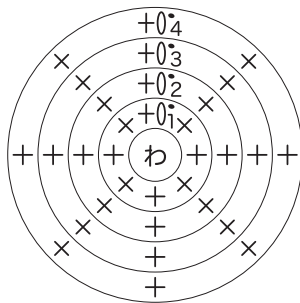
※ ch14

- ① Stuff [A] and sew on to [B]
- ② Stuff [C] and graft to ①

[C] Black x1

Rows	Stitches
4	8
3	8
2	8 *
1	8

* bpsc

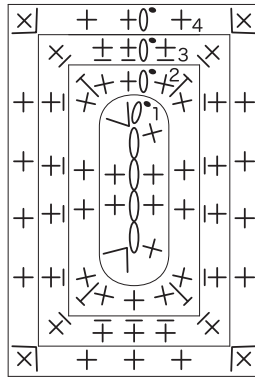


Engine switch
(Economy switch)

8ply 3/0 Black/Red each 1

Rows	Stitches
4	22(+4)
3	18 *
2	18(+8)
1	10

※ ch4 * bpsc

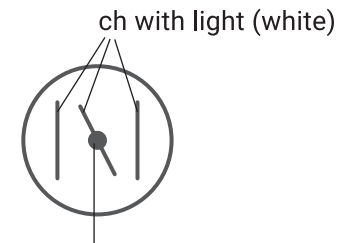
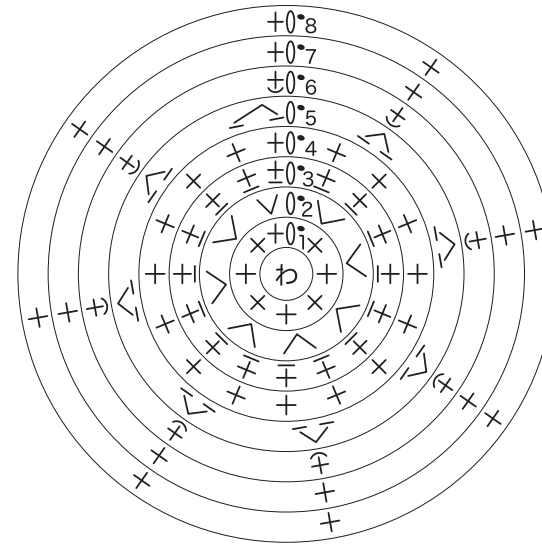


Choke

8ply 3/0 Black x1

Rows	Stitches
8	8
7	8
6	8 **
5	8(-8) *
4	16
3	16 *
2	16(+8)
1	8

* bpsc ** fpssc



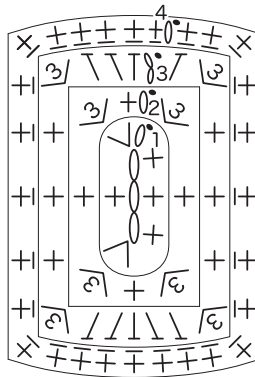
French knot stitch with light (white)

AC outlet

8ply 3/0 Black x2

Rows	Stitches
4	28 *
3	28(+12)
2	16(+8)
1	8

※ ch3 * bpsc

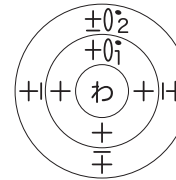


Circuit breaker

4ply 2/0 Yellow x1

Rows	Stitches
2	4 *
1	4

* sc blo



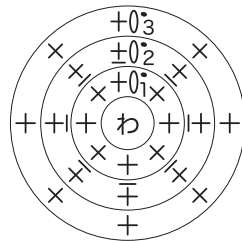
Warning lamp

8ply 3/0 x2

A Black

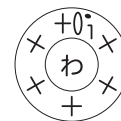
Rows	Stitches
3	8
2	8 *
1	8

* bpsc



B Red

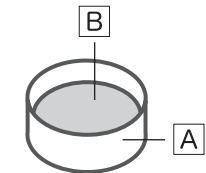
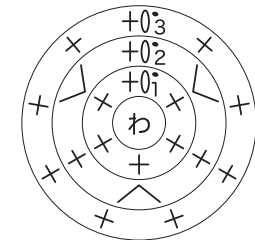
Rows	Stitches
1	6



Indicator lamp

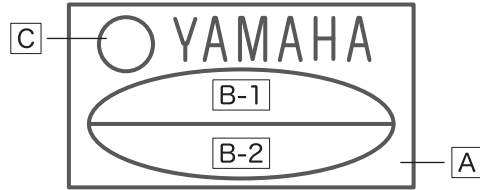
8ply 3/0 x1

Rows	Stitches	Col
3	9	Black
2	9(+3)	Green
1	6	



Graft

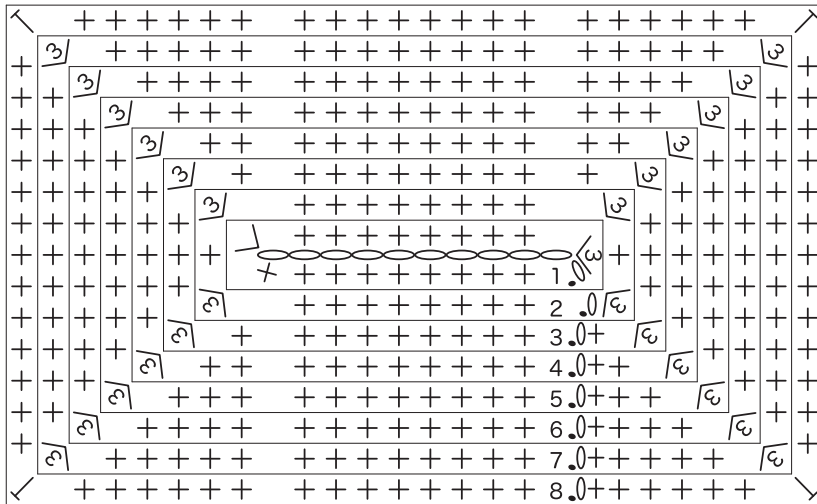
Logo A



A 8ply 3/0 Blue x1

Rows	Stitches
8	70
7	70(+8)
6	62(+8)
5	54(+8)
4	46(+8)
3	38(+8)
2	30(+8)
1	22

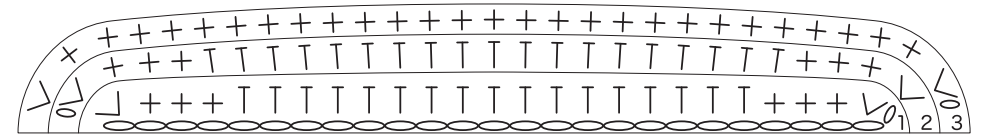
※ ch10



B-1 8ply 3/0 White x1

Rows	Stitches
3	31(+2)
2	29(+2)
1	27

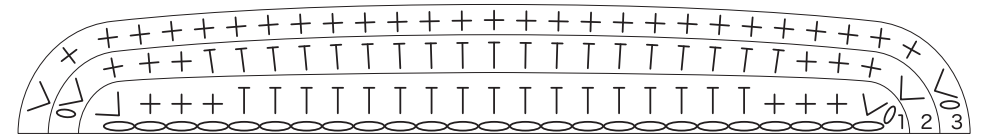
※ ch25



B-2 8ply 3/0 x1

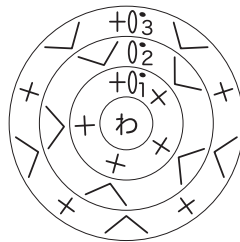
Rows	Stitches	Col
3	31(+2)	White
2	29(+2)	Black
1	27	Black

※ ch25



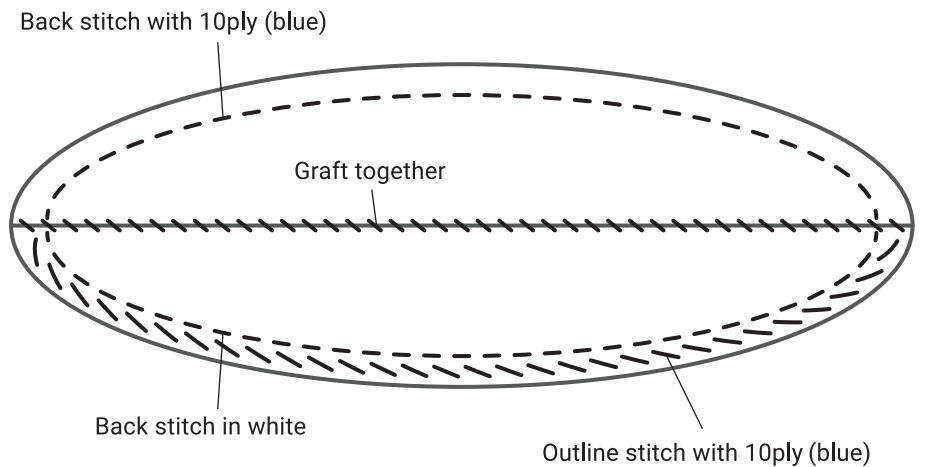
C 8ply 3/0 x1

Rows	Stitches	Col
3	15(+5)	White
2	10(+5)	Black
1	5	Black



Letters ch with 8ply (white)

YAMAHA



Logo B

Letters ch with 8ply (white)



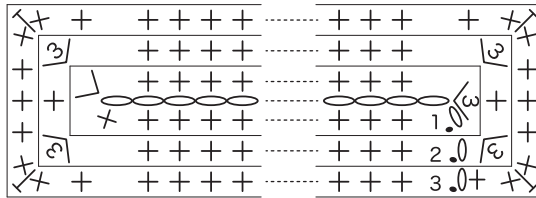
YAMAHA

B See C in logo A

A 10ply 6/0 Blue x1

Rows	Stitches
3	58(+8)
2	50(+8)
1	42

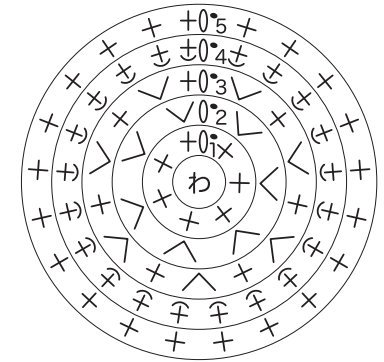
※ ch20



Muffler 4ply 2/0 Silver x1

Rows	Stitches
5	21
4	21 *
3	21(+7)
2	14(+7)
1	7

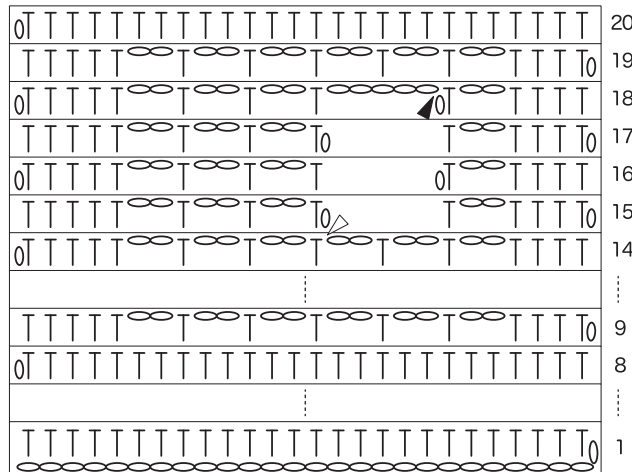
* fp sc
Use with WS up



Side cover 12ply 8/0 Black x1

Rows	Stitches
20	26
19	26
18	26(+5)
17	21
16	21
15	21(-5)
14	26
⋮	⋮
1	26

※ ch26

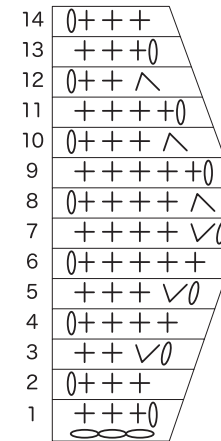


Side cover bottom sticker

10ply 5/0 Red x1

Rows	Stitches
14	3
13	3
12	3(-1)
11	4
10	4(-1)
9	5
8	5(-1)
7	6(+1)
6	5
5	5(+1)
4	4
3	4(+1)
2	3
1	3

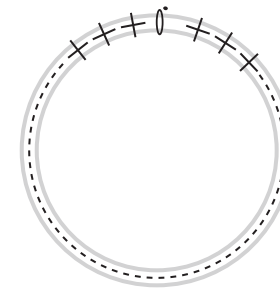
※ ch3



Side cover circle part

8ply 4/0 Black x1

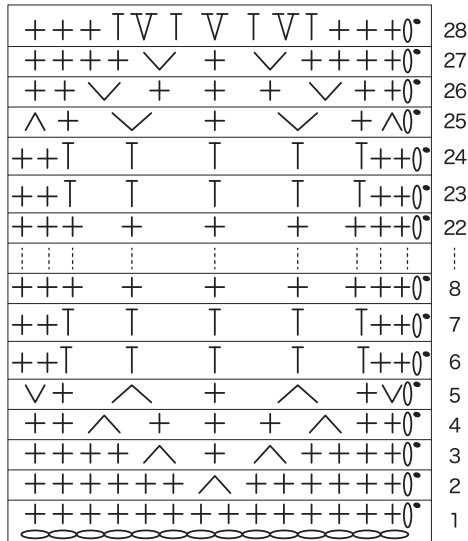
Crochet 50 sc on a 48mm plastic ring



Handle Super Bulky 8mm Blue x1

Rows	Stitches
28	16(+3)
27	13(+2)
26	11(+2)
25	9
⋮	⋮
4	9(-2)
3	11(-2)
2	13(-2)
1	14

※ ch14

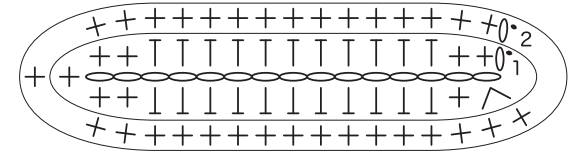


Front : ventilation slit 8ply 4/0 Black each 1

Large

Rows	Stitches
2	32
1	32

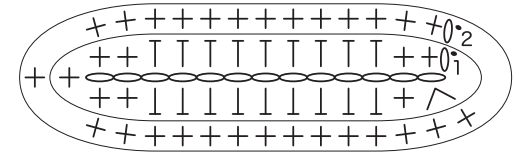
※ ch15



Medium

Rows	Stitches
2	28
1	28

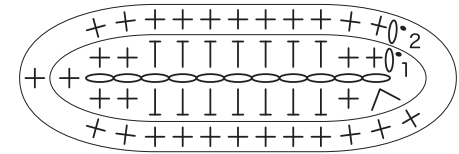
※ ch13



Small

Rows	Stitches
2	24
1	24

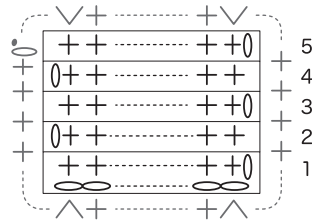
※ ch11



Handle side upper seal 8ply 4/0 White x1

Rows	Stitches
5	30
⋮	⋮
1	30

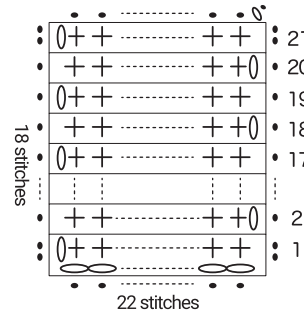
※ ch30
※ Crochet evenly around



Warning sticker 8ply 4/0 x1

Rows	Stitches	Col
21	22	Orange
⋮	⋮	⋮
19	22	⋮
18	22	Black
⋮	⋮	⋮
17	22	White
⋮	⋮	⋮
1	22	⋮

※ ch22
※ Crochet evenly around
Slip stitch with black for the edge

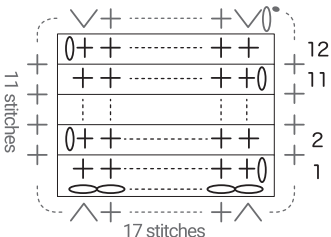


Specifications sticker

8ply 4/0 Light grey x1

Rows	Stitches
12	15
⋮	⋮
1	15

※ ch15
※ Crochet evenly around

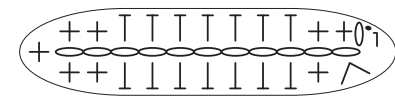


Back : ventilation slit 8ply 4/0 Black each 1

Large

Rows	Stitches
1	24

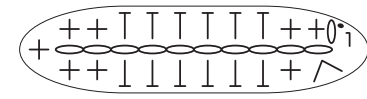
※ ch11



Medium

Rows	Stitches
1	22

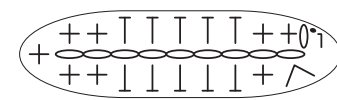
※ ch10



Small

Rows	Stitches
1	20

※ ch9

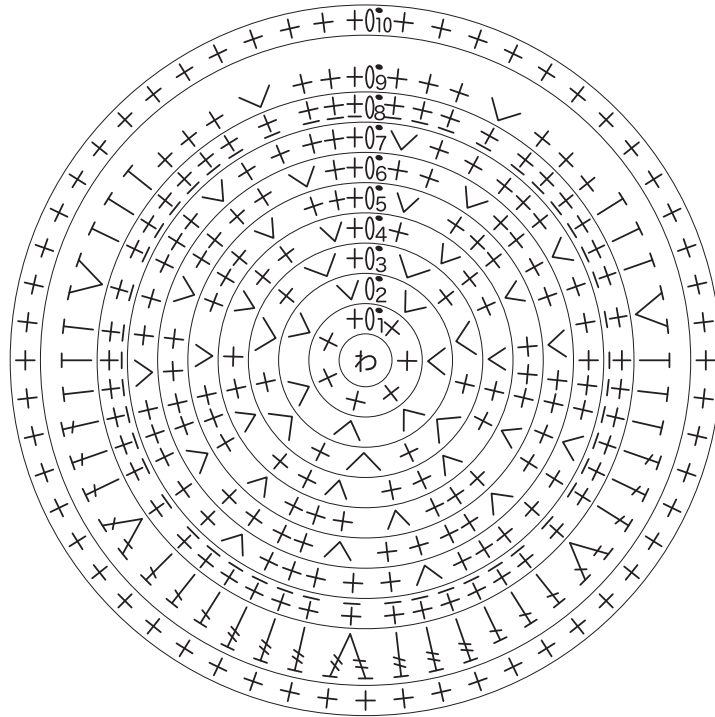


Fuel tank cap holder

10ply 6/0 Darkbrown x1

Rows	Stitches
10	56
9	56(+7)
8	49 *
7	49(+7)
6	42(+7)
5	35(+7)
4	28(+7)
3	21(+7)
2	14(+7)
1	7

* bpsc

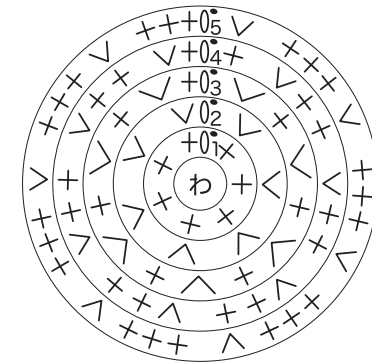
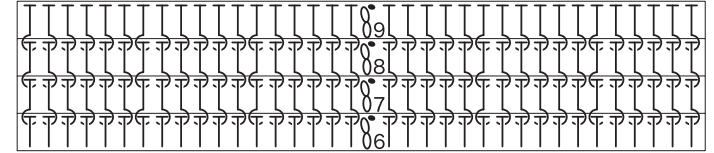


Fuel tank cap

10ply 6/0 Charcoal x1

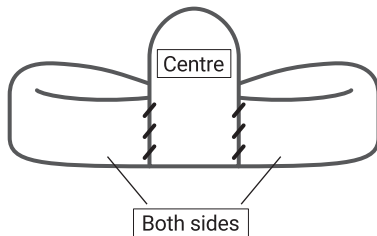
Rows	Stitches
9	35
8	35
7	35
6	35
5	35(+7)
4	28(+7)
3	21(+7)
2	14(+7)
1	7

Repeat
fp and bp
crocheting



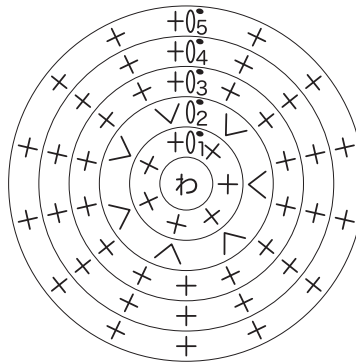
Fuel tank cap knob

8ply 4/0 Grey



Centre x1

Rows	Stitches
5	14
⋮	⋮
2	14(+7)
1	7



Both sides x2

Rows	Stitches
4	8
3	8
2	8(+1)
1	7

※ ch2

