

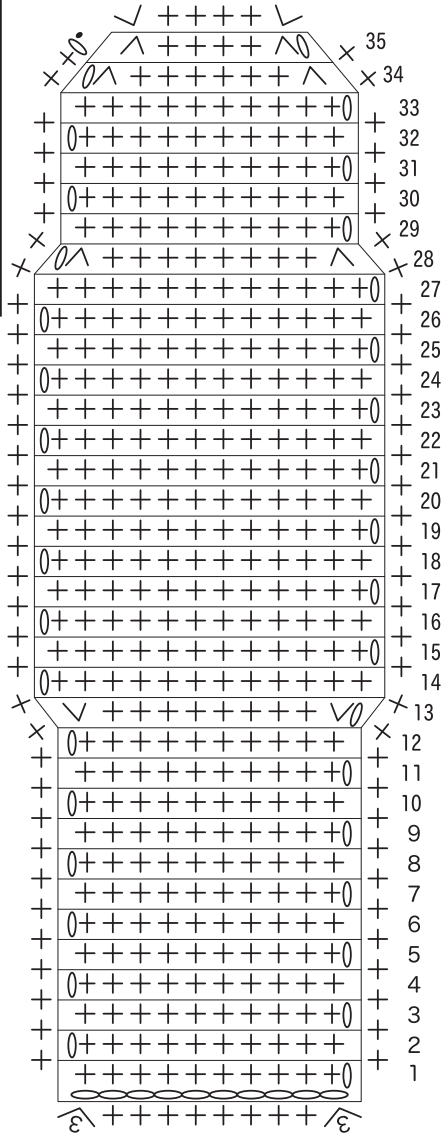
All light, 1 ball / hook 2/0

Body cowl inside

Orange version: black 1
Light blue version: white 1

Rows	Stitches
35	6(-2)
34	8(-2)
33	10
⋮	⋮
28	10(-2)
27	12
⋮	⋮
14	12
13	12(+2)
12	10
⋮	⋮
1	10

※ Ch10

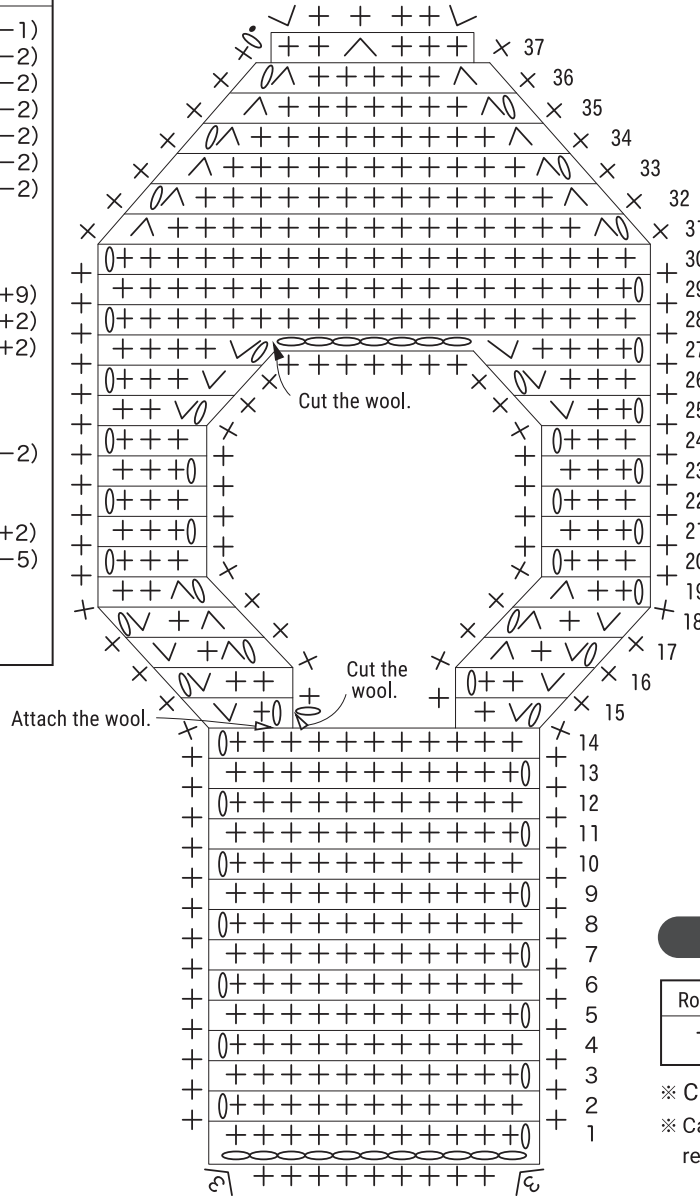


Body cowl outside

Orange version: black 1
Light blue version: Light blue 1

Rows	Stitches
37	6(-1)
36	7(-2)
35	9(-2)
34	11(-2)
33	13(-2)
32	15(-2)
31	17(-2)
30	19
⋮	⋮
28	19
27	19(+9)
26	10(+2)
25	8(+2)
24	6
⋮	⋮
20	6
19	6(-2)
18	8
17	8
16	8(+2)
15	6(-5)
14	11
⋮	⋮
11	11

※ Ch11

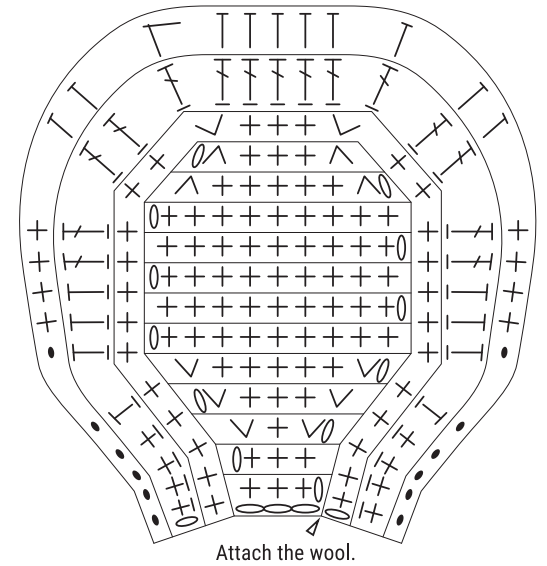


Body cowl indent

Orange version: black 1
Light blue version: black 1

Rows	Stitches
15	31
14	31
13	31
12	5(-2)
11	7(-2)
10	9
⋮	⋮
5	9(+2)
4	7(+2)
3	5(+2)
2	3
1	3

※ Ch3



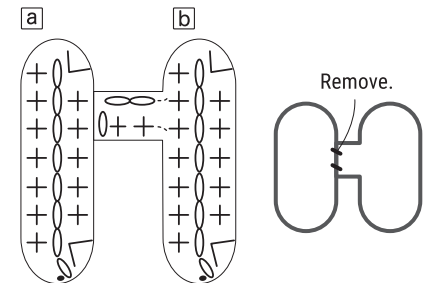
Step Mat

Light blue version only: black 1

Rows	Stitches
1	16

※ Ch7

※ Casting on is required in [b]

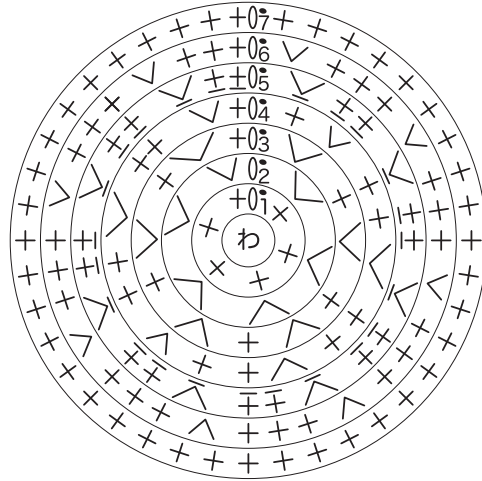


Tire

Orange version / Light blue version Same for both 4 each

Rows	Stitches	Colour
7	40	Black
6	40 (+8)	
5	32 (+8) *	
4	24 (+6)	White
3	18 (+6)	
2	12 (+6)	
1	6	

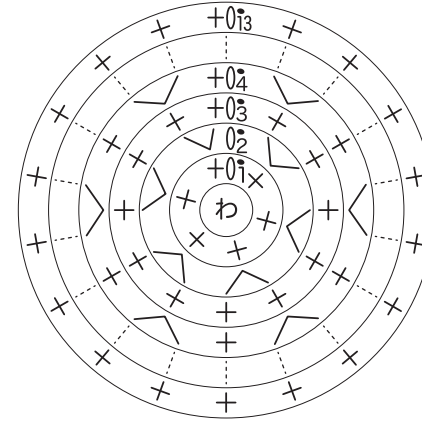
* Bpsc



Front Fender

Orange version: Orange 1 / Light blue version: Light Blue 1

Rows	Stitches
13	18
⋮	⋮
4	18 (+6)
3	12
2	12 (+6)
1	6

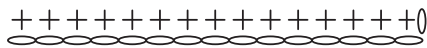


Front Fork

Orange version / Light blue version Same for both: black 2 each

Rows	Stitches
1	15

※ Ch15



Lower Cover

Orange version: White 2 / Light blue version: Light Blue 2

Rows	Stitches
1	31

※ Ch15

Start of crocheting.

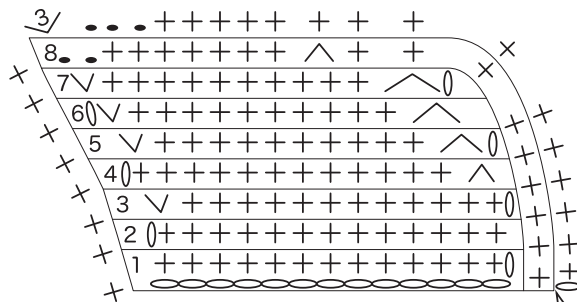


Side cover Left

Orange version: Orange 1 / Light blue version: Light Blue 1

Rows	Stitches
8	19
7	13
6	13
5	13
4	13 (-1)
3	14 (+1)
2	13
1	13

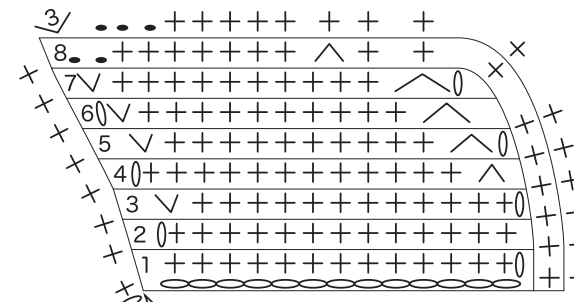
※ Ch13



Attach the wool.

Side cover Right

Orange version: Orange 1 / Light blue version: Light Blue 1



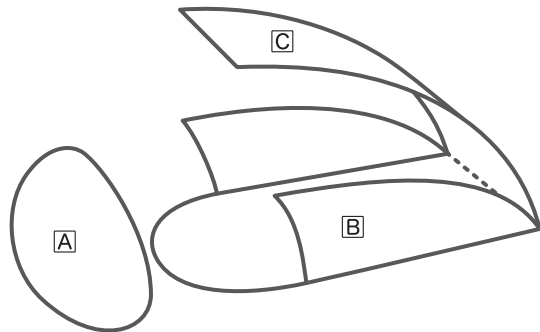
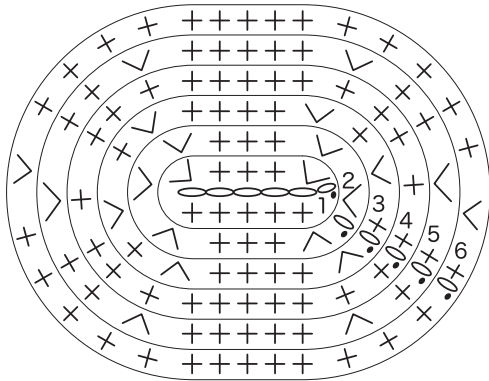
Attach the wool.

Underseat storage A

Orange version: black 1
Light blue version: white 1

Rows	Stitches
6	32 (+2)
5	30 (+6)
4	24
3	24 (+6)
2	18 (+6)
1	12

※ Ch5

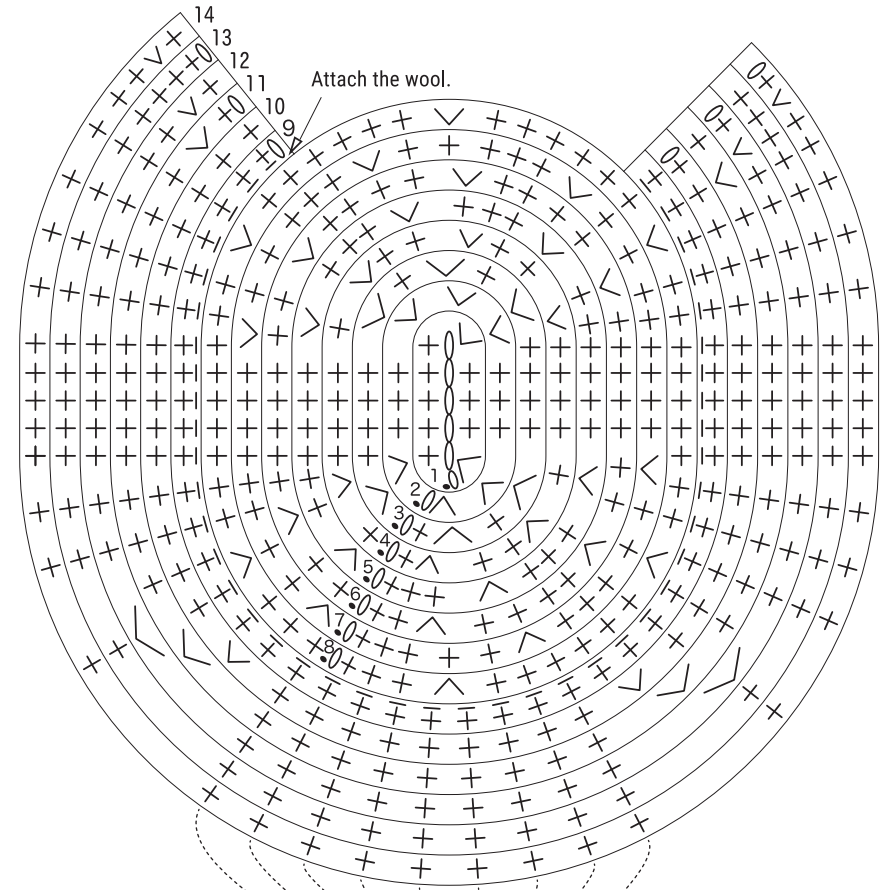


Underseat storage B

Orange version: Black 1 / Light blue version: Light Blue 1

Rows	Stitches
14	43 (+2)
13	41
12	41
11	41
10	41 (-2)
9	43 (-11) *
8	54 (+6)
7	48 (+6)
6	42 (+6)
5	36 (+6)
4	30 (+6)
3	24 (+6)
2	18 (+6)
1	12

※ Ch5 * Bpsc



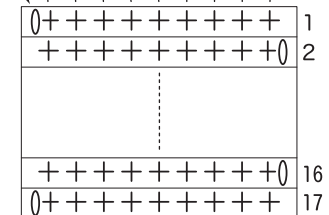
Attach the wool.

Underseat storage C

Orange version: black 1
Light blue version: white 1

Rows	Stitches
17	9
⋮	⋮
1	9

* Pick up 9 stitches from B

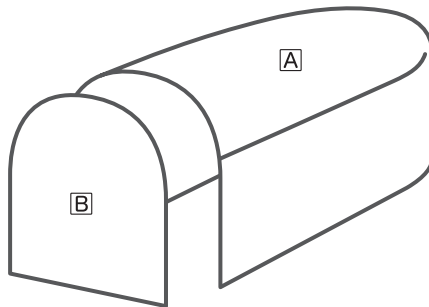
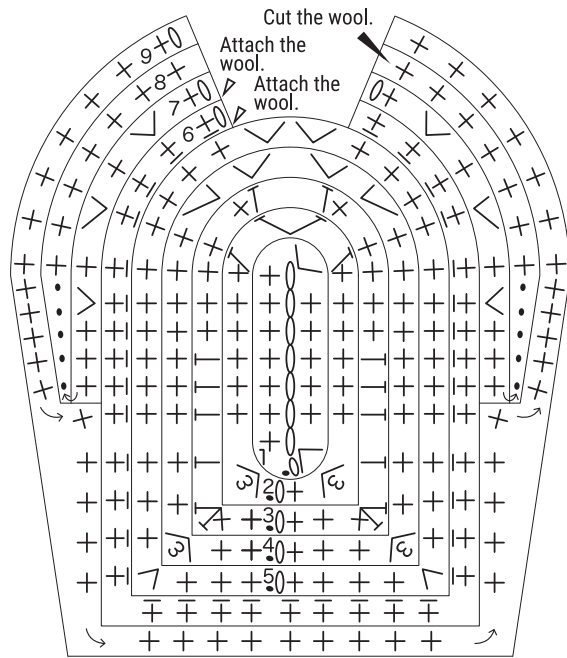


Seat A

Orange version: Green 1 / Light blue version: Black 1

Rows	Stitches
9	43 (+19)
8	24
7	24 (-13)
6	37 (-4)
5	41 (+4)
4	37 (+8)
3	29 (+6)
2	23 (+7)
1	16

※ Ch7

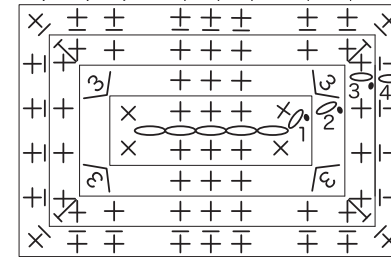
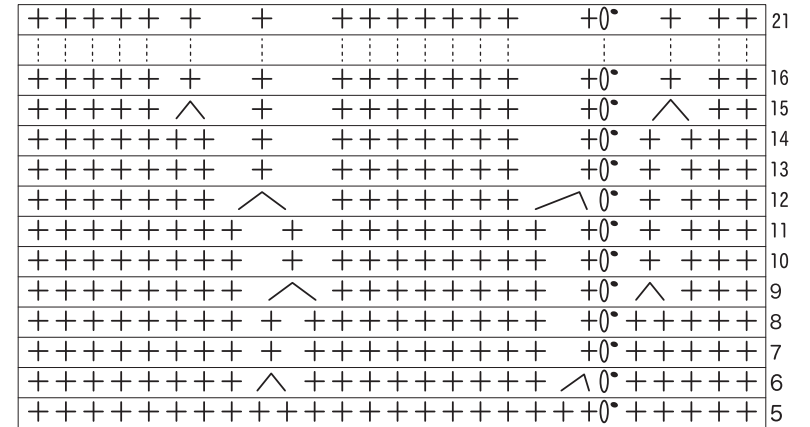


Frame

Orange version / Light blue version Same for both: black 1 each

Rows	Stitches
21	18
∴	∴
16	18
15	18 (-2)
14	20
13	20
12	20 (-2)
11	22
10	22
9	22 (-2)
8	24
7	24
6	24 (-2)
5	26
4	26 *
3	26 (+8)
2	18 (+8)
1	10

※ Ch5 * Bpsc

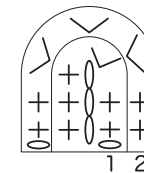


Seat B

Orange version / Light blue version Same for both: black 1 each

Rows	Stitches
2	10 (+3)
1	7

※ Ch3

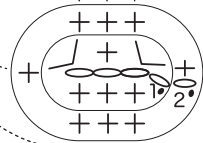
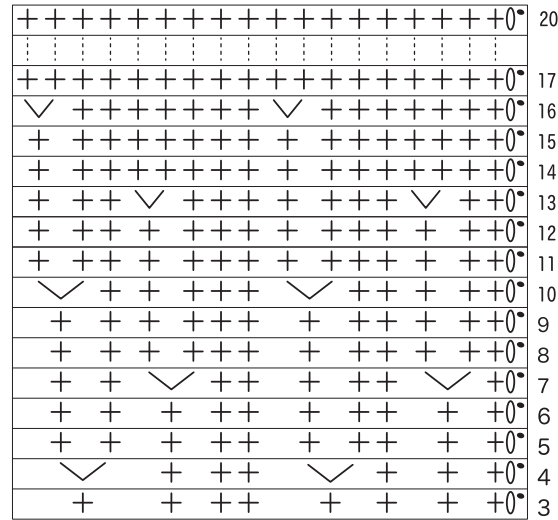


Rear Fender

Orange version / Light blue version Same for both: 1 each

Rows	Stitches	Colour: Orange ver.	Colour: Light blue ver.		
20	18	Black	White		
⋮	⋮				
17	18				
16	18 (+2)				
15	16				
14	16				
13	16 (+2)				
12	14				
11	14				
10	14 (+2)			Black	Black
9	12				
8	12				
7	12 (+2)				
6	10				
5	10				
4	10 (+2)				
3	8				
2	8				
1	8				

※ Ch3

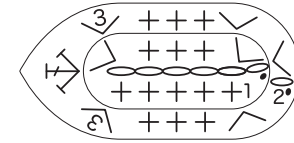


Motor

Orange version / Light blue version Same for both: black 1 each

Rows	Stitches
2	21 (+9)
1	12

※ Ch5

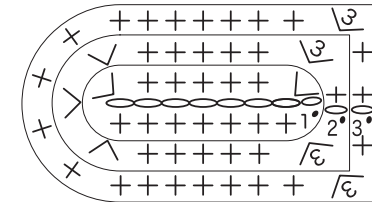


Rear Tire Cover

Orange version / Light blue version Same for both: black 1 each

Rows	Stitches
3	27 (+4)
2	23 (+7)
1	16

※ Ch7

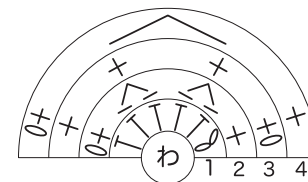


Tail Light

Orange version / Light blue version Same for both: Red 1 each

Rows	Stitches
4	3 (-1)
3	4
2	4 (-2) *
1	6

* Bpsc

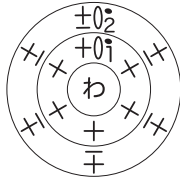


Front Flasher Light

Orange version / Light blue version Same for both: 2 each

Rows	Stitches	Colour
2	6 *	Orange
1	6	White

* Bpsc

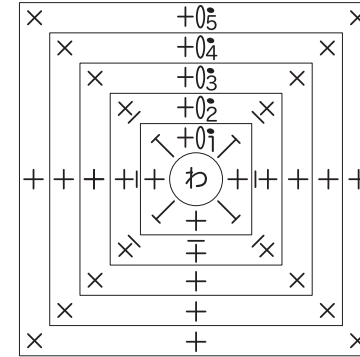


Drink Holder

Orange version: black 1 / Light blue version: white 1

Rows	Stitches
5	8
4	8
3	8
2	8 *
1	8

* Bpsc

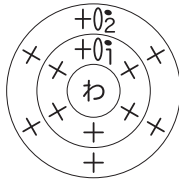


Rear Flasher Light

Orange version / Light blue version Same for both: 2 each

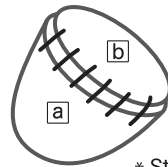
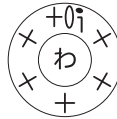
a

Rows	Stitches	Colour
2	6	White
1	6	White



b

Rows	Stitches	Colour
1	6	Orange

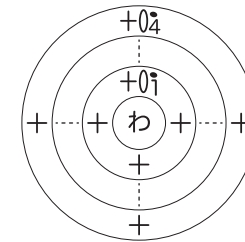


* Stuff and sew together.

Stand

Orange version / Light blue version Same for both: 2 each

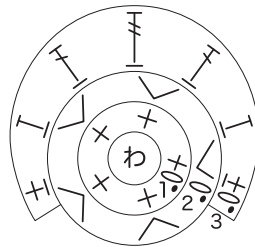
Rows	Stitches
4	4
⋮	⋮
1	4



Headlight

Orange version / Light blue version Same for both: 1 each

Rows	Stitches	Colour: Orange ver.	Colour: Light blue ver.
3	7 (-3)	Orange	White
2	10 (+5)	Grey	Grey
1	5		

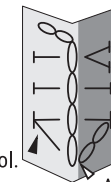


Beginner Driver Mark

Light blue version: 1

Rows	Stitches
1	7

※ Ch4



Cut the wool.

Attach the wool.

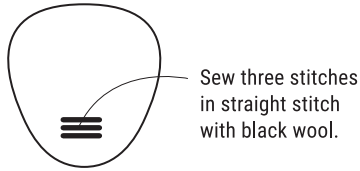
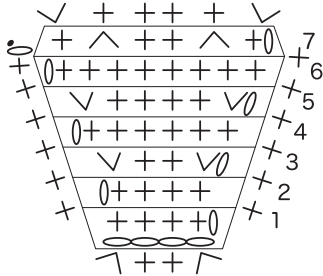
Crochet □ with yellow and ■ with green.

Headlight Cover

Orange version: Orange 1 / Light blue version: White 1

Rows	Stitches
7	6 (-2)
6	8
5	8 (+2)
4	6
3	6 (+2)
2	4
1	4

※ Ch4



Sew three stitches in straight stitch with black wool.

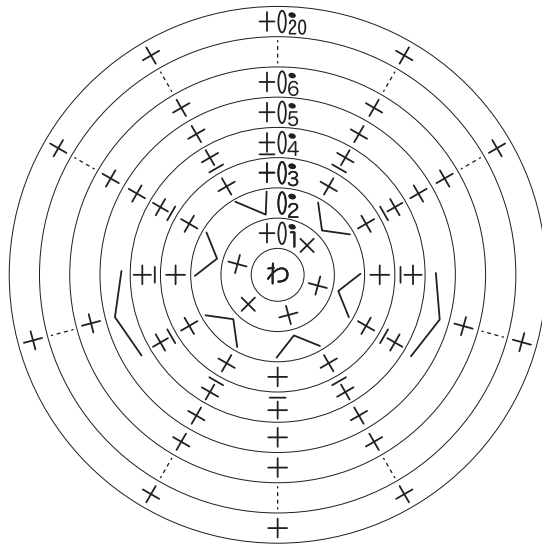
Leg shield

Orange version / Light blue version Same for both: black 1 each

Rows	Stitches	Colour
20	10	Black
∴	∴	
6	10	
5	10 (-2)	
4	12 *	White
3	12 (+2)	
2	12 (+6)	
1	6	

* Bpsc

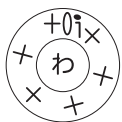
* The light blue version should all be crocheted in white.



Emblem

Orange version / Light blue version Same for both: black (ultra-fine) 1 each

Rows	Stitches
1	6

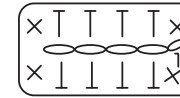


Mirror

Orange version / Light blue version Same for both: black and grey 2 each

Rows	Stitches
1	12

※ Ch4



Leave open.

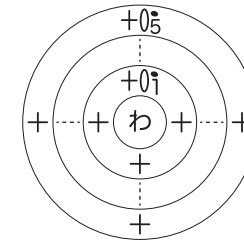


Match up black and grey and sew up the three sides.

Handlebars

Orange version / Light blue version Same for both: black 2 each

Rows	Stitches
5	4
∴	∴
1	4



Meter

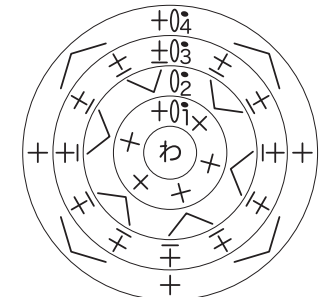
Orange version / Light blue version: black 2

Rows	Stitches	Colour: Orange ver.	Colour: Light blue ver.
4	8 (-4)	White	Grey
3	12 *		Grey
2	12 (+6)	White	White
1	6		White

* Bpsc

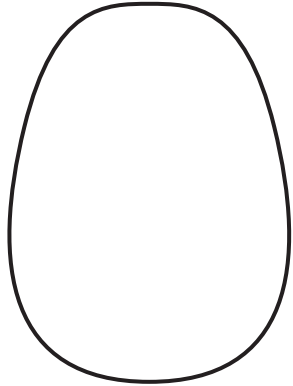


Stitch the outline next to the edge.
Orange version: black
Light blue version: light blue

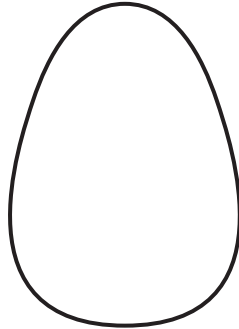


Cardboard patterns

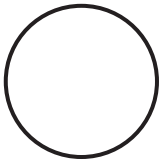
Underseat storage



Top of seat



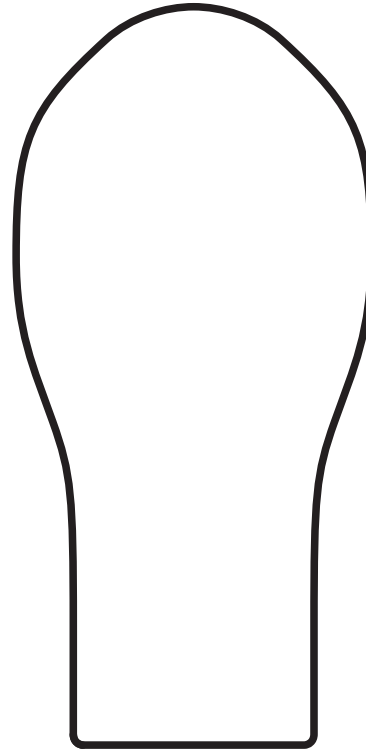
Tire



Wire patterns

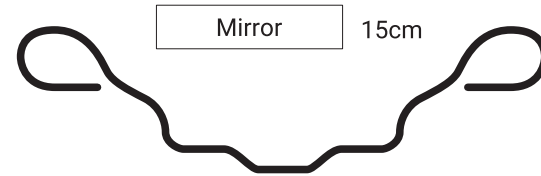
Body Cowl

30cm



Mirror

15cm



Handlebars

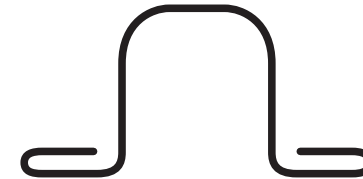
40cm



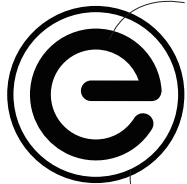
Link from front tire

Stand

10cm



Embroidery



Black (ultra-fine) chain stitch

Black (ultra-fine) outline stitch



White (ultra-fine) chain stitch
*Represented by a circle.

White (ultra-fine) chain stitch