

# 1 Assembling the Front Cowl

First, assemble each component by following the working method and markings. Then, refer to the illustration and photos below to glue the parts together.

Indication of Working Methods



Fold or Curve

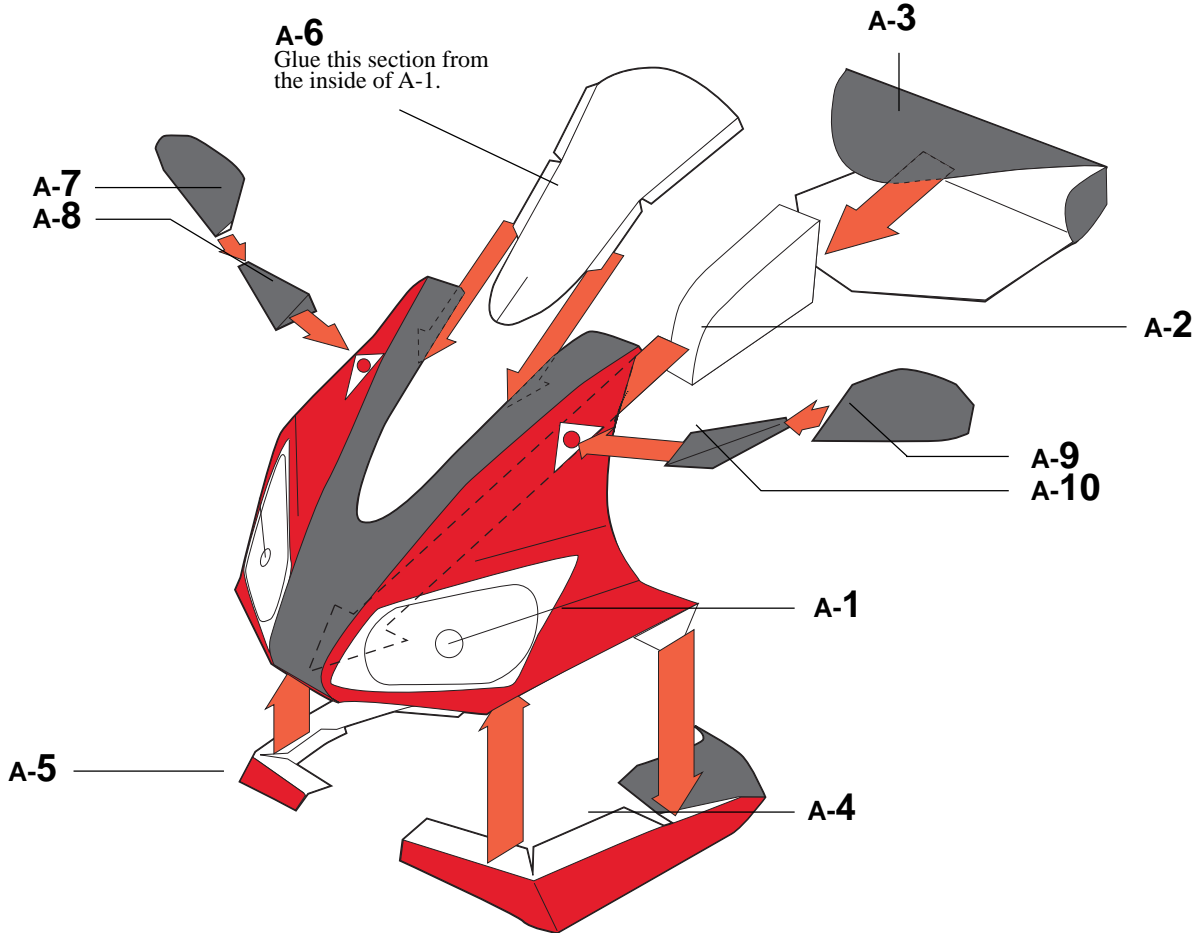


Adhere

## FRONT COWL

Sheet A, 10 parts in total

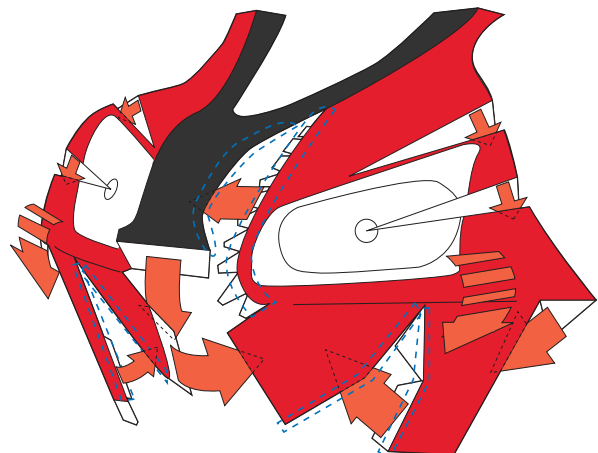
Please use the ● dots on each component as reference when gluing surfaces.



Reference photo



A-1



Fold the parts as shown above so that the dotted lines on the gluing surfaces are lined up before gluing each section.

## 2 Assembling the Steering

First, assemble each component by following the working method and markings. Then, refer to the illustration and photos below to glue the parts together.

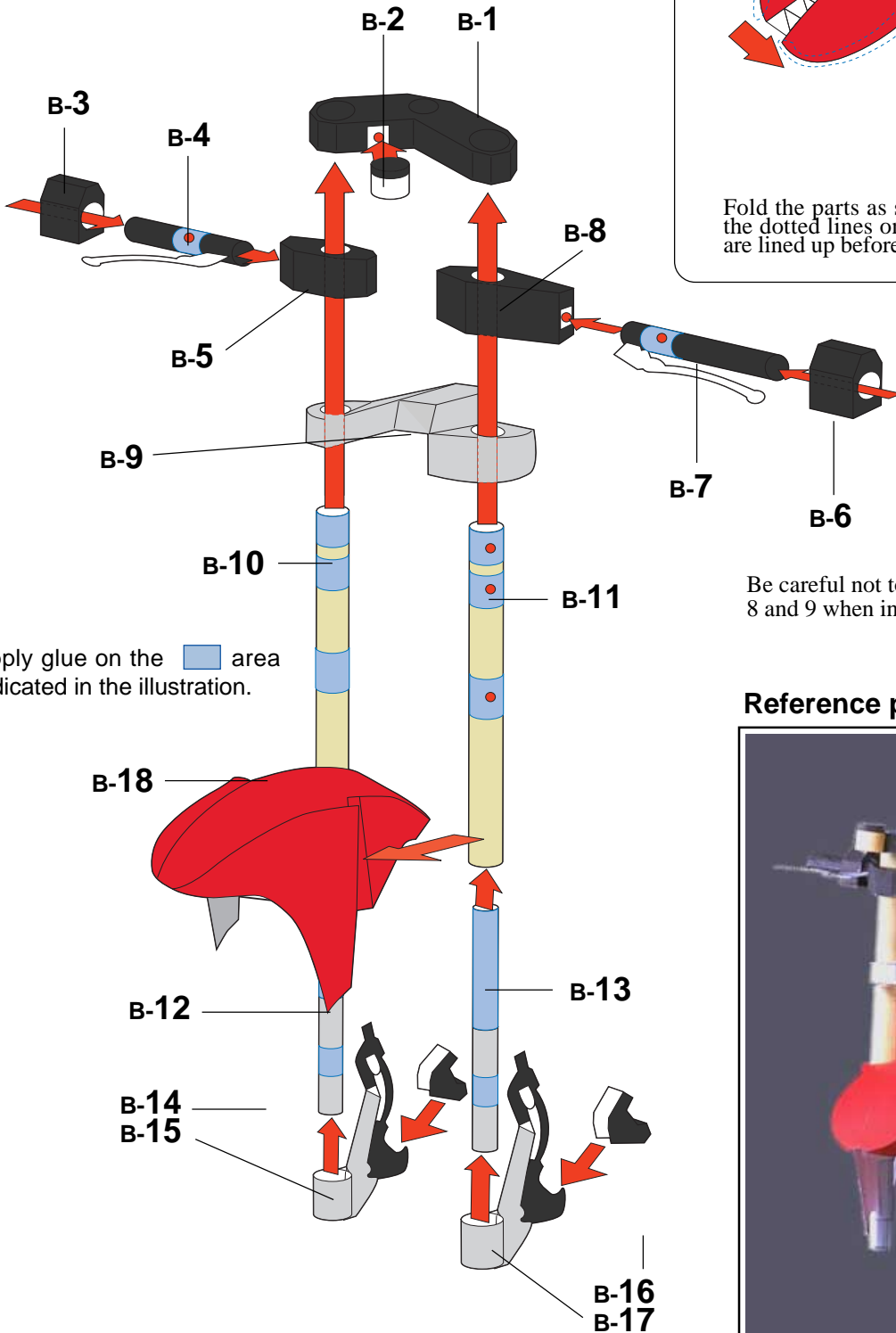
Indication of Working Methods


 Fold or Curve 
  Adhere

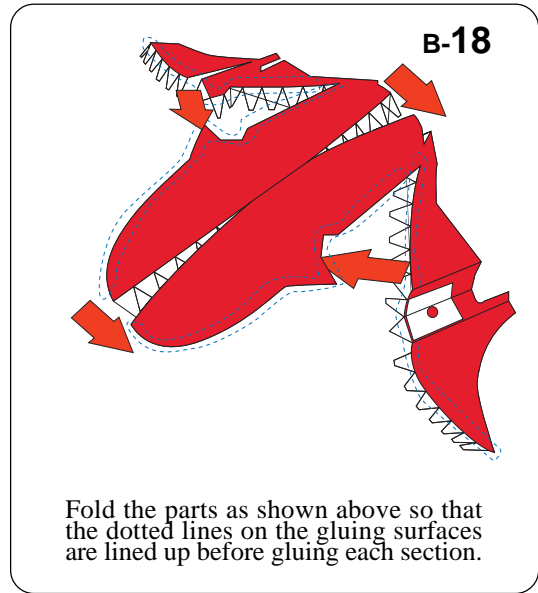
### STEERING

Sheet B, 18 parts in total

Please use the ● dots on each component as reference when gluing surfaces.



Apply glue on the  area indicated in the illustration.



Be careful not to leave any glue on B-5, 8 and 9 when inserting B-10 and 11.

#### Reference photo



# 3 Assembling the Frame

First, assemble each component by following the working method and markings. Then, refer to the illustration and photos below to glue the parts together.

Indication of Working Methods



Fold or Curve



Adhere

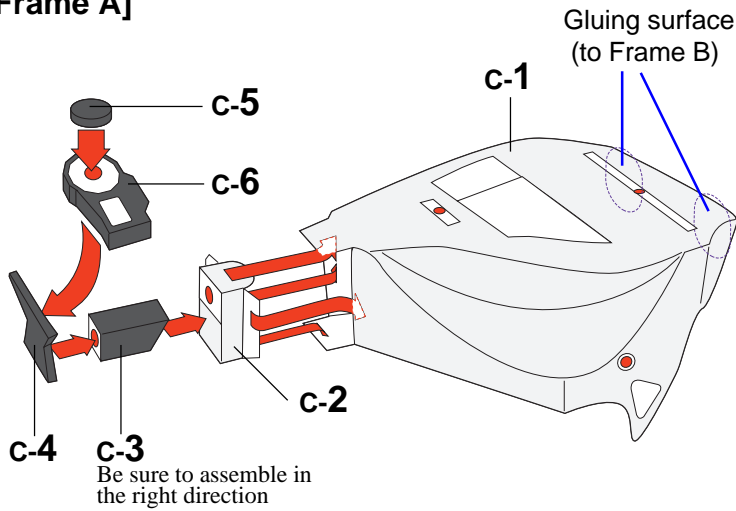
## FRAME

Sheet C (x2), 23 parts in total

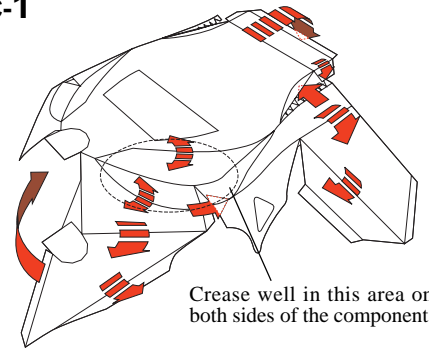
After assembling both Frames A and B, glue the two on the gluing surface shown below.

Please use the ● dots on each component as reference when gluing surfaces.

### [Frame A]

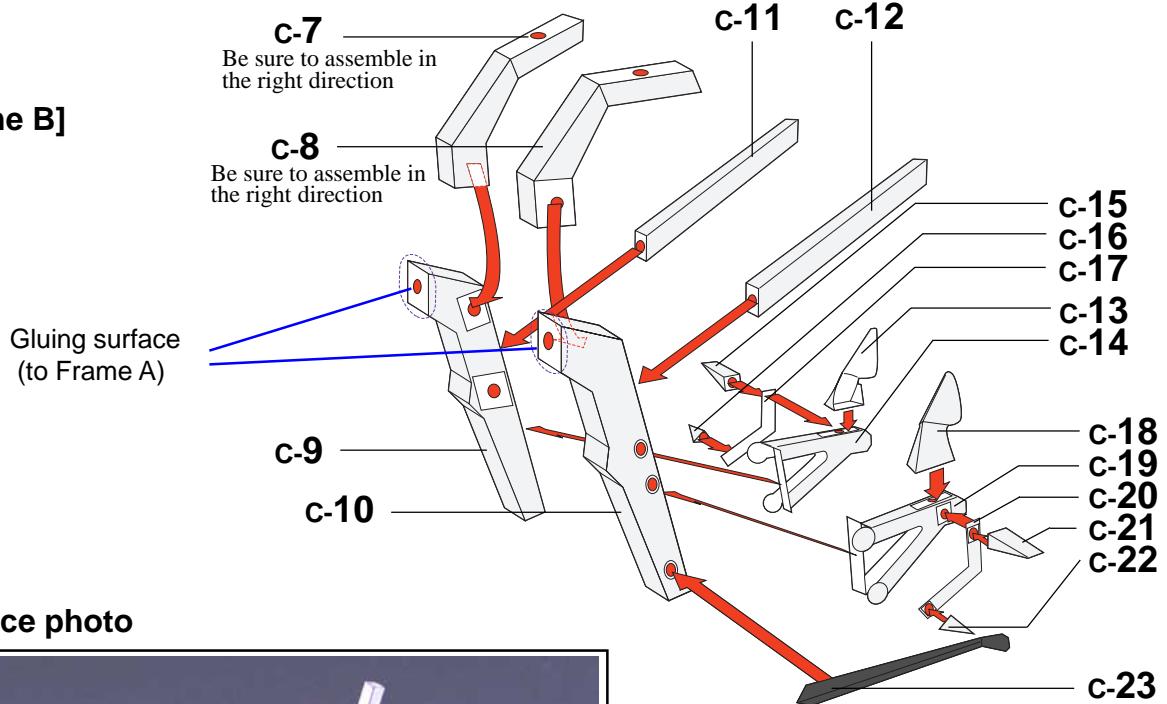


### c-1

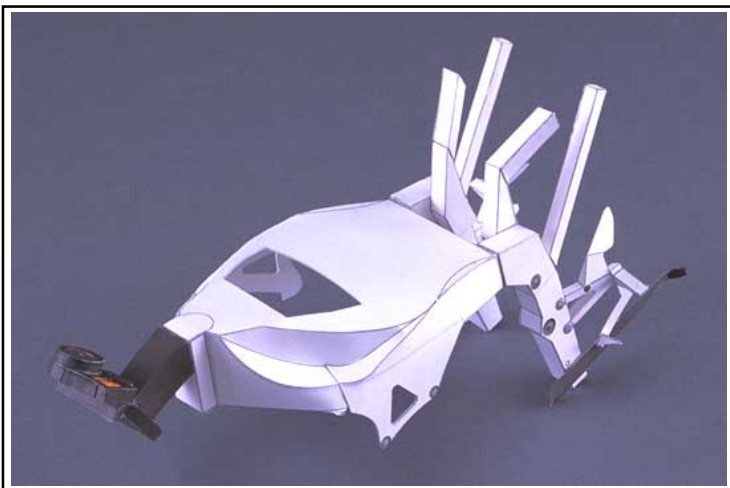


Fold the parts as shown above so that corresponding gluing areas are lined up before gluing each section.

### [Frame B]



### Reference photo



# 4 Assembling the Fuel Tank

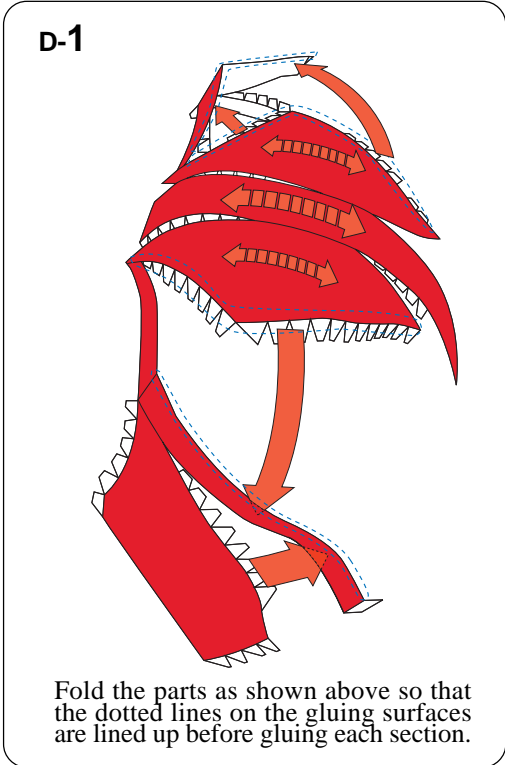
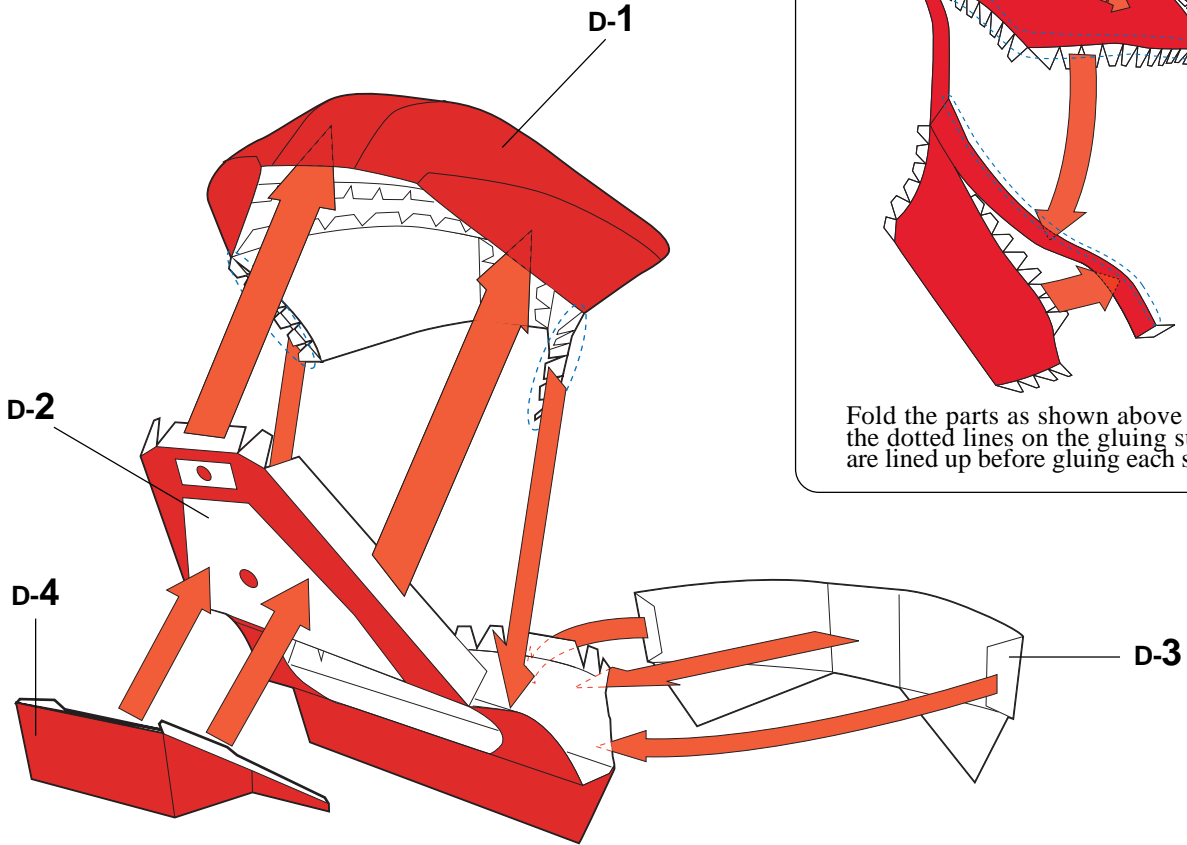
First, assemble each component by following the working method and markings. Then, refer to the illustration and photos below to glue the parts together.

Indication of Working Methods  Fold or Curve  Adhere

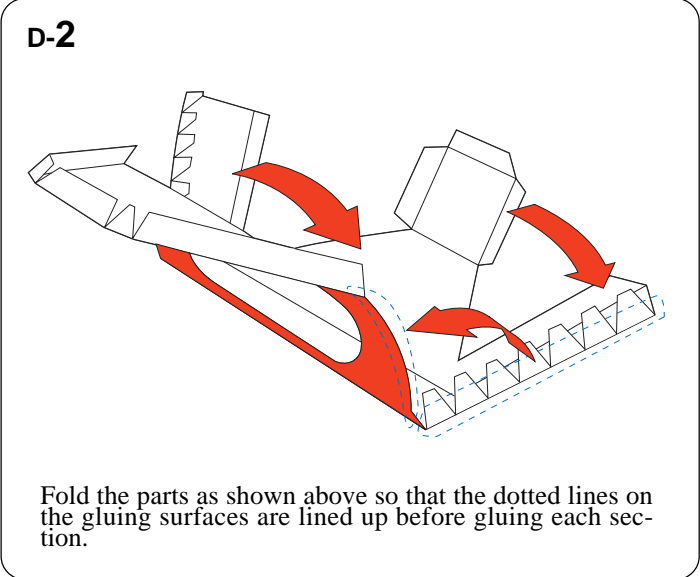
## FUEL TANK

Sheet D 4 parts in total

Please use the ● dots on each component as reference when gluing surfaces.



Reference photo



# 5 Assembling the Engine

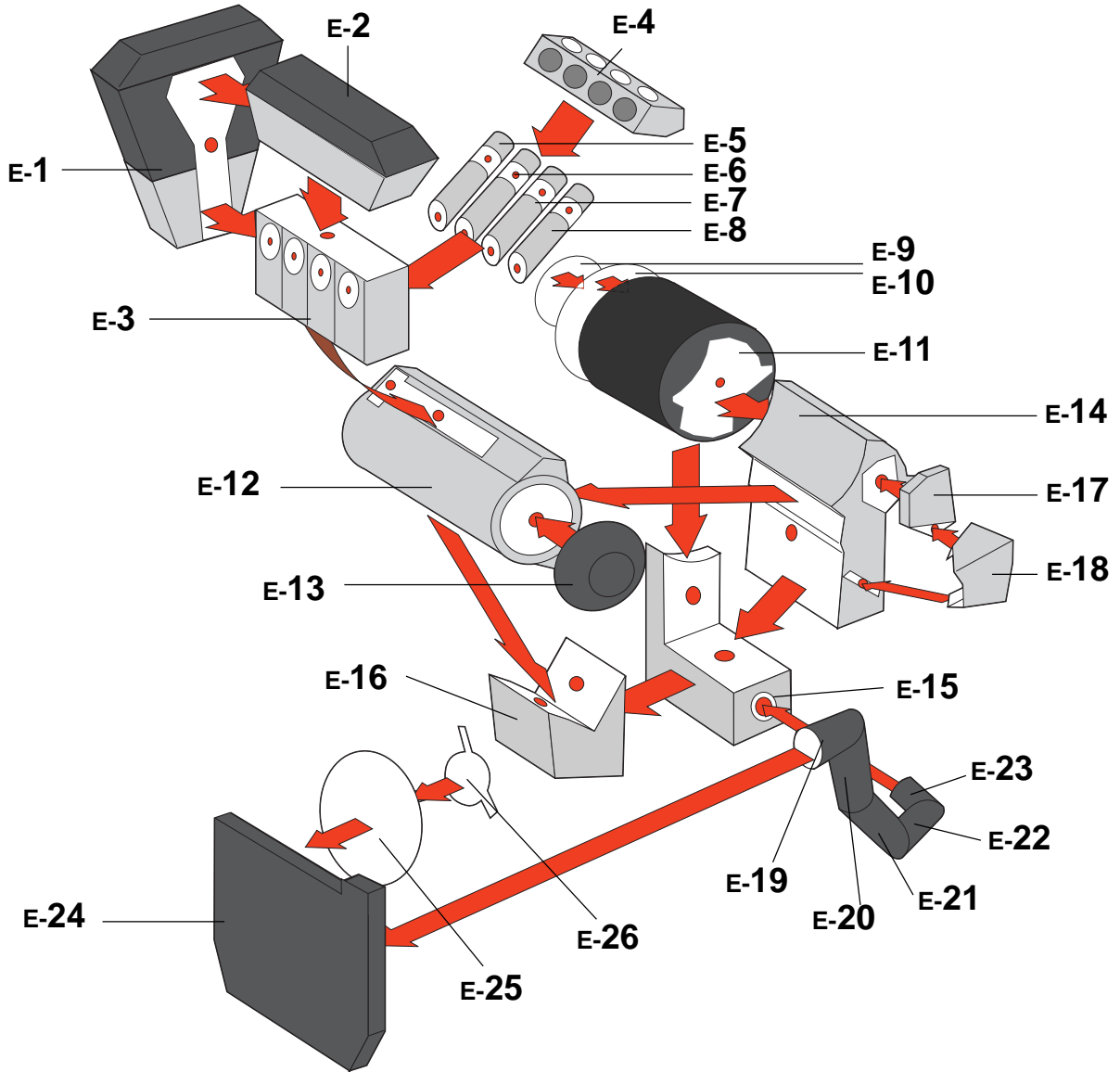
First, assemble each component by following the working method and markings. Then, refer to the illustration and photos below to glue the parts together.

Indication of Working Methods ■■■■▶ Fold or Curve ▶▶▶ Adhere

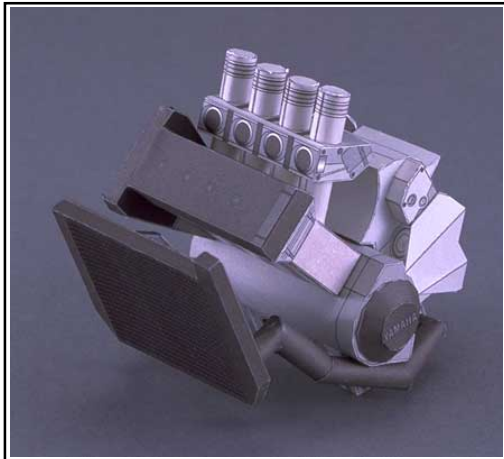
## ENGINE

Sheet E, 26 parts in total

Please use the ● dots on each component as reference when gluing surfaces.



Reference photo



# 6 Assembling the Under Cowl

First, assemble each component by following the working method and markings. Then, refer to the illustration and photos below to glue the parts together.

Indication of Working Methods



Fold or Curve

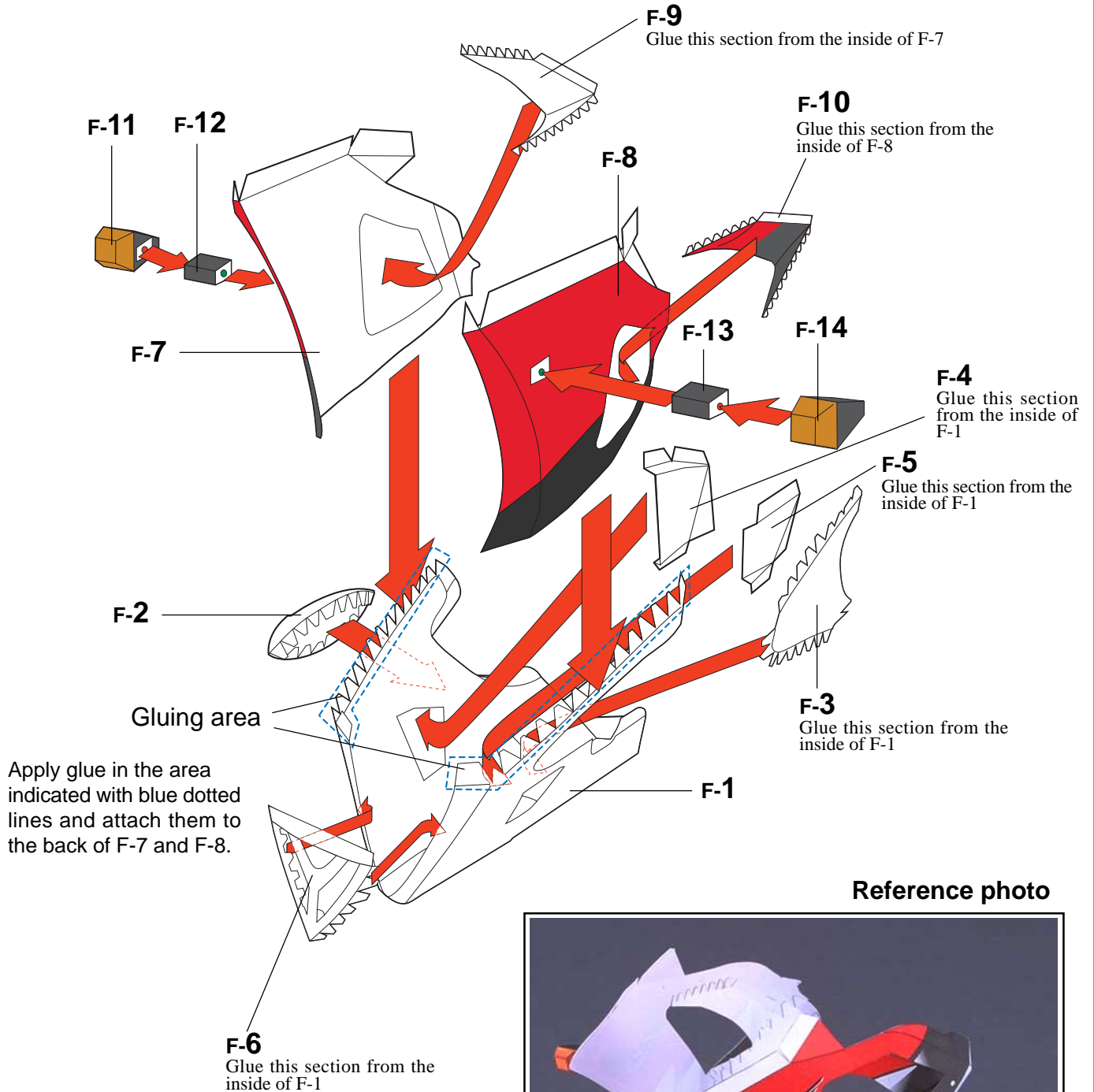


Adhere

## UNDER COWL

Sheet F, 14 parts in total

Please use the ● dots on each component as reference when gluing surfaces.



Reference photo

