

# 1 Assembling the Fuel Tank

First, assemble each component by following the working method and markings. Then, refer to the illustration and photos below to glue the parts together.

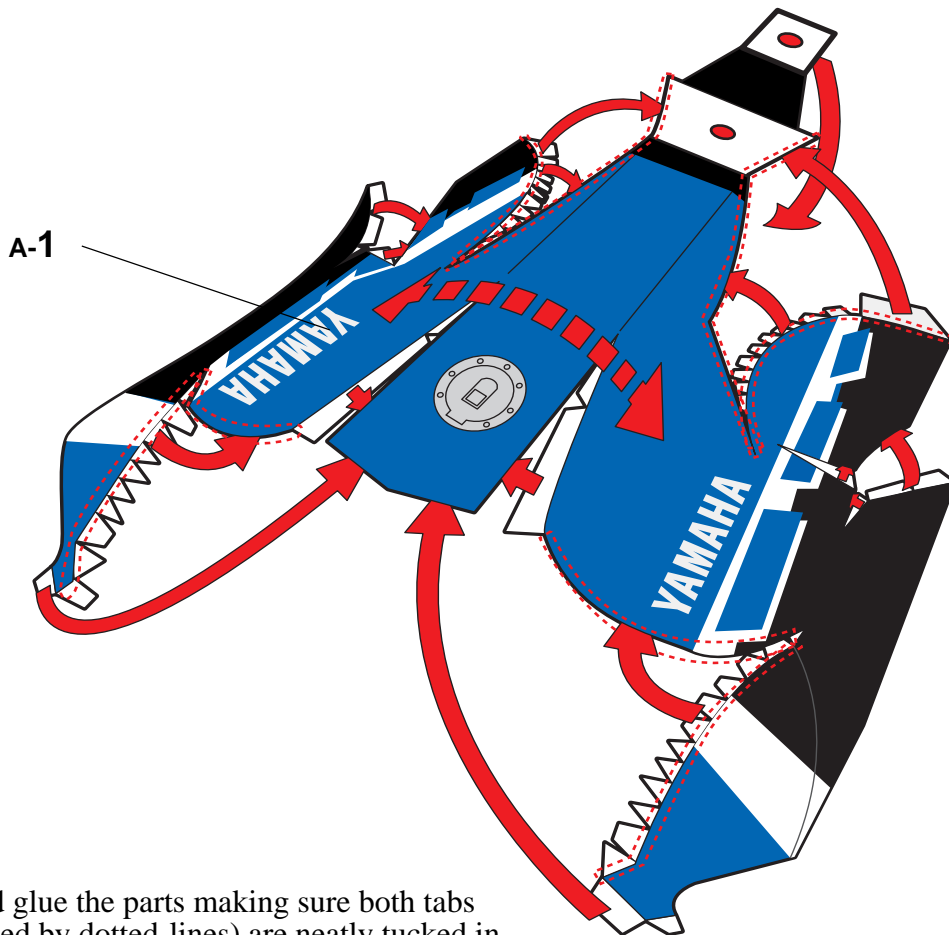
Indication of Working Methods

 Fold or Curve  Glue

## Fuel Tank

Sheet A, 1 part in total

Fold each relevant part according to the assembly symbols.



Fold and glue the parts making sure both tabs (illustrated by dotted-lines) are neatly tucked in.

Reference photo



## 2 Assembling the Steering Column

First, assemble each component by following the working method and markings. Then, refer to the illustration and photos below to glue the parts together.

Indication of Working Methods



Fold or Curve



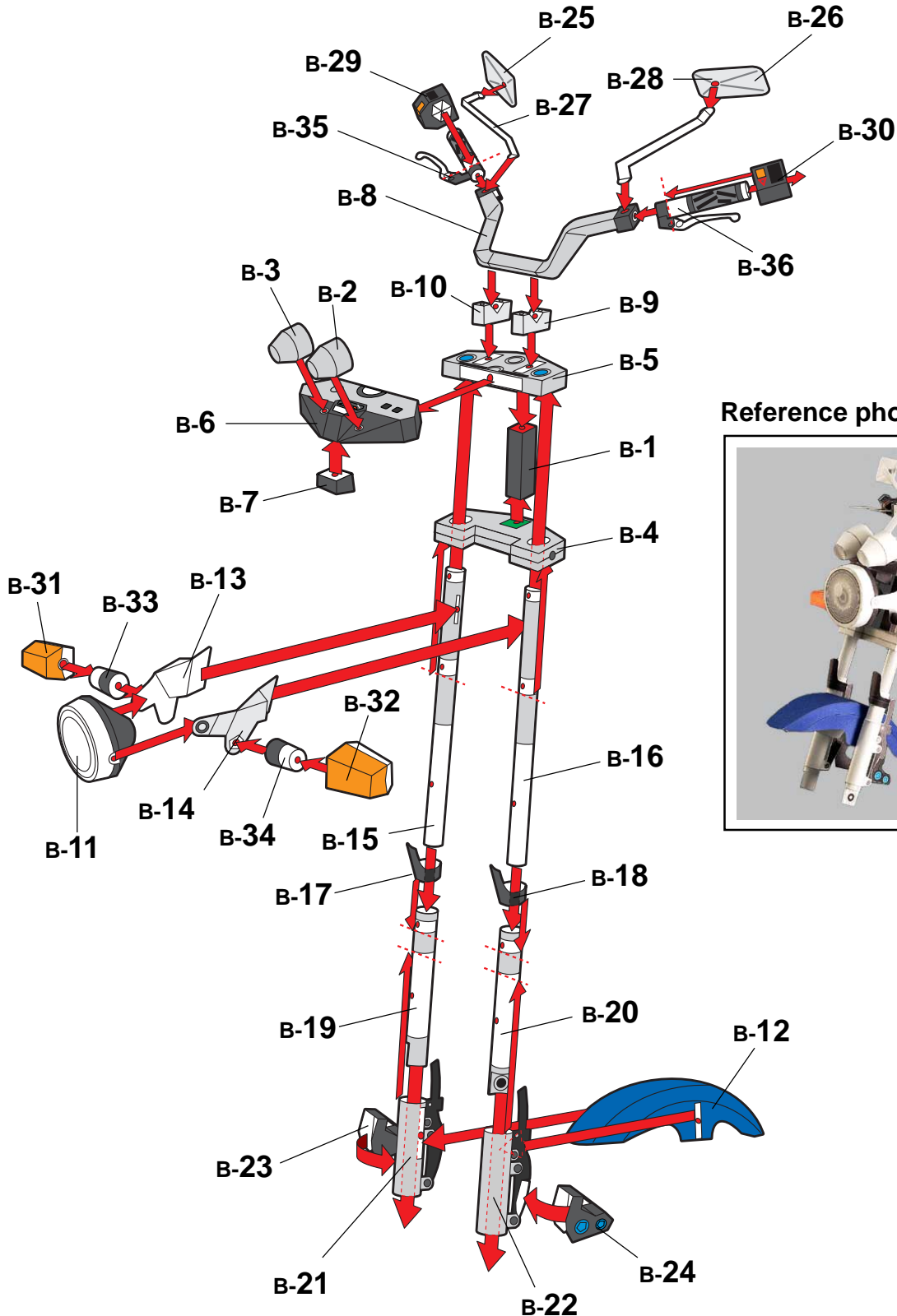
Glue

### Steering column

Sheet B, 36 parts in total

Fold each relevant part according to the assembly symbols.

Please use the ● dots on each component as reference when gluing surfaces.



Reference photo



# 3 Assembling the Frame

First, assemble each component by following the working method and markings. Then, refer to the illustration and photos below to glue the parts together.

Indication of Working Methods



Fold or Curve



Glue

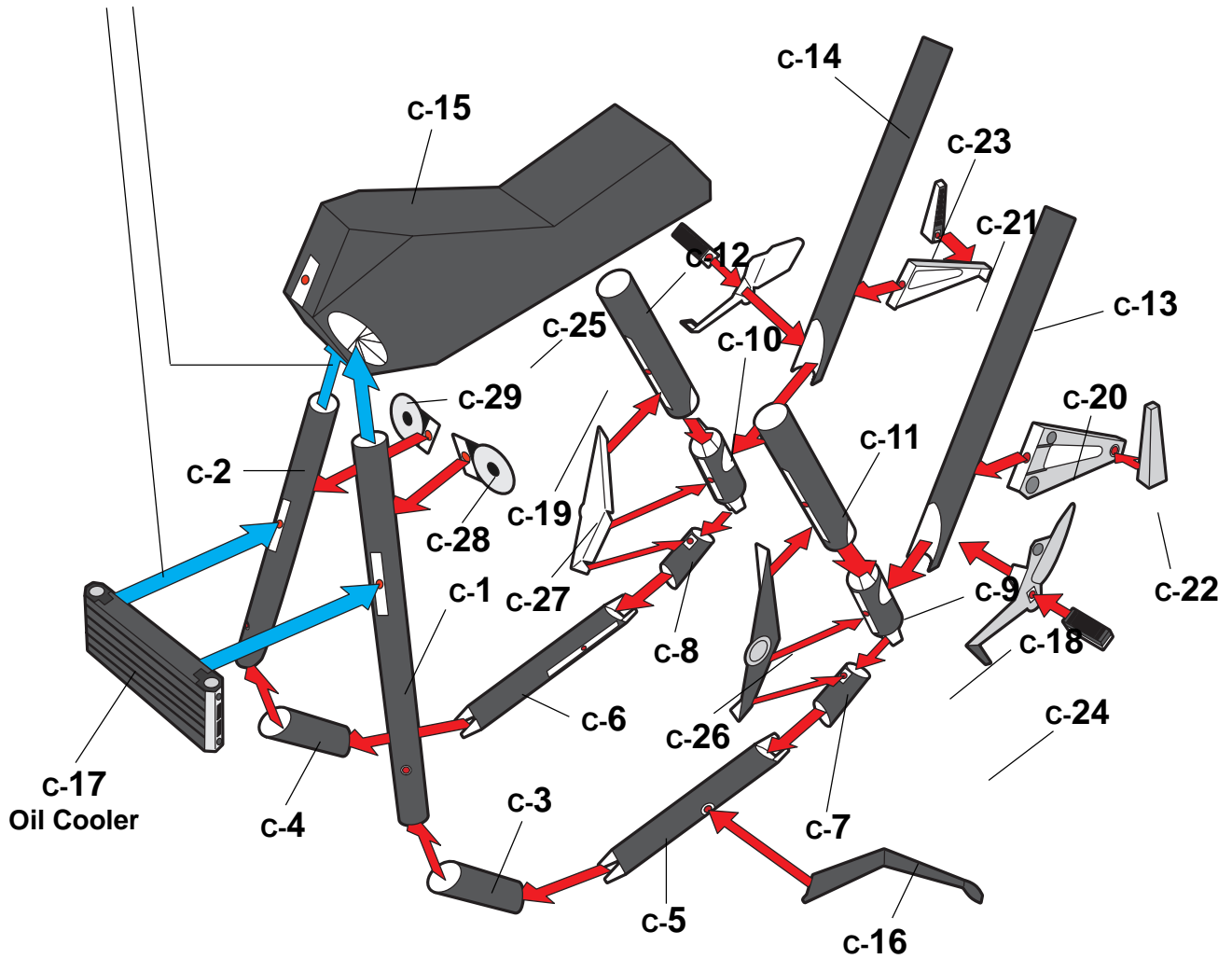
## Frame

Sheet C, 29 parts in total

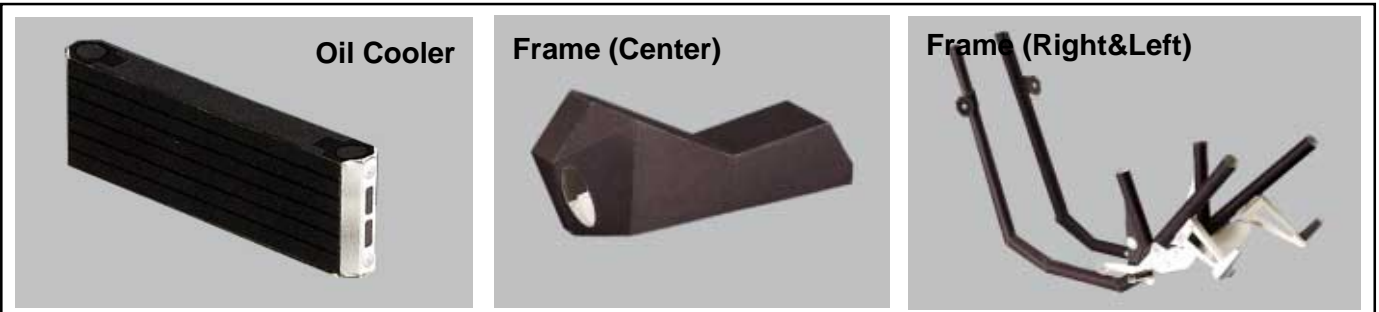
Fold each relevant part according to the assembly symbols.

Please use the ● dots on each component as reference when gluing surfaces.

➡ in the diagram indicates where the parts are to be glued later.  
Please do not glue parts at this stage.



### Reference photo



# 4 Assembling the Engine

First, assemble each component by following the working method and markings. Then, refer to the illustration and photos below to glue the parts together.

Indication of Working Methods



Fold or Curve



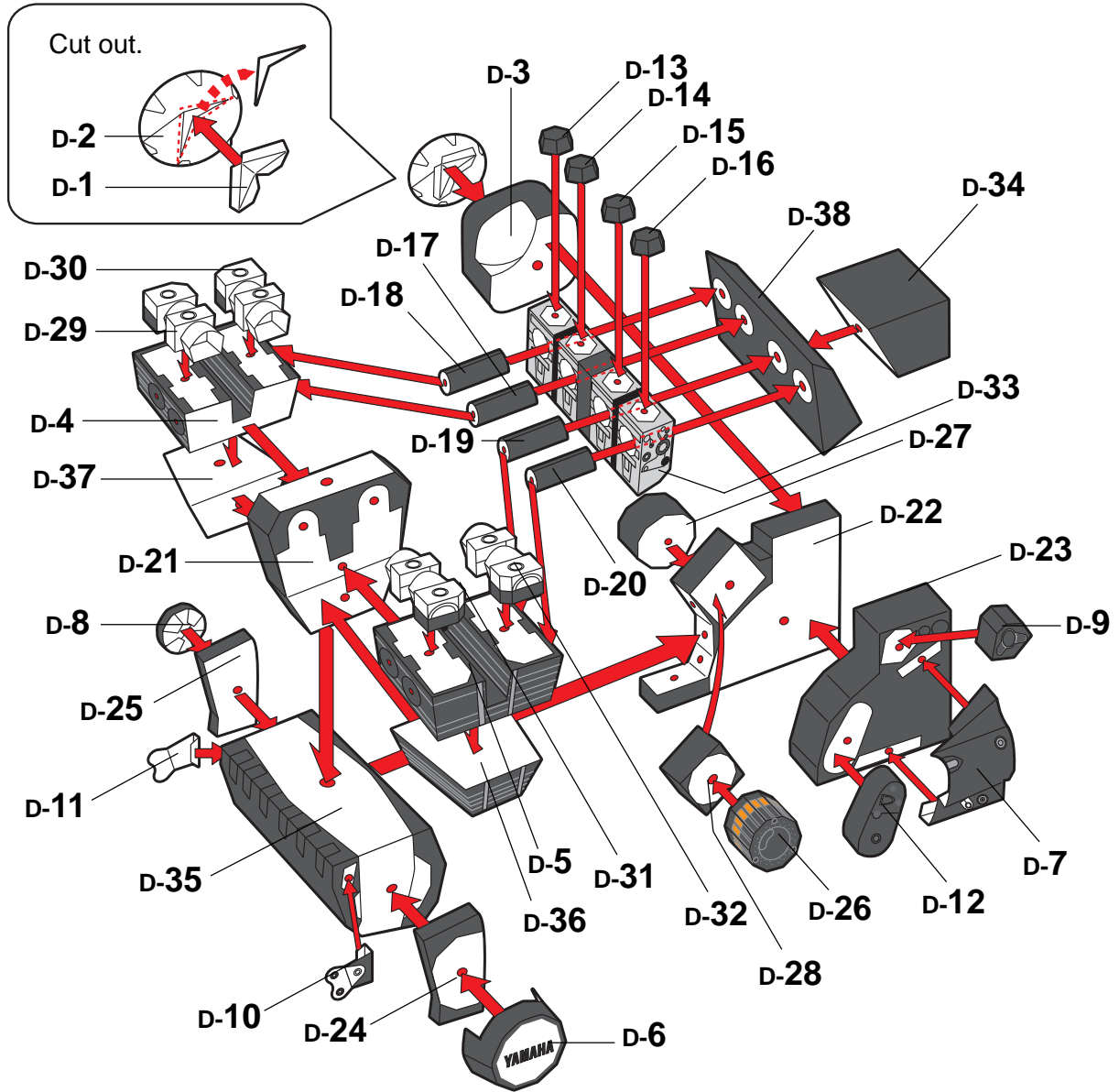
Glue

## Engine

Sheet D, 38 parts in total

Fold each relevant part according to the assembly symbols.

Please use the ● dots on each component as reference when gluing surfaces.



Reference photo



# 5 Assembling the Exhaust

First, assemble each component by following the working method and markings. Then, refer to the illustration and photos below to glue the parts together.

Indication of Working Methods



Fold or Curve



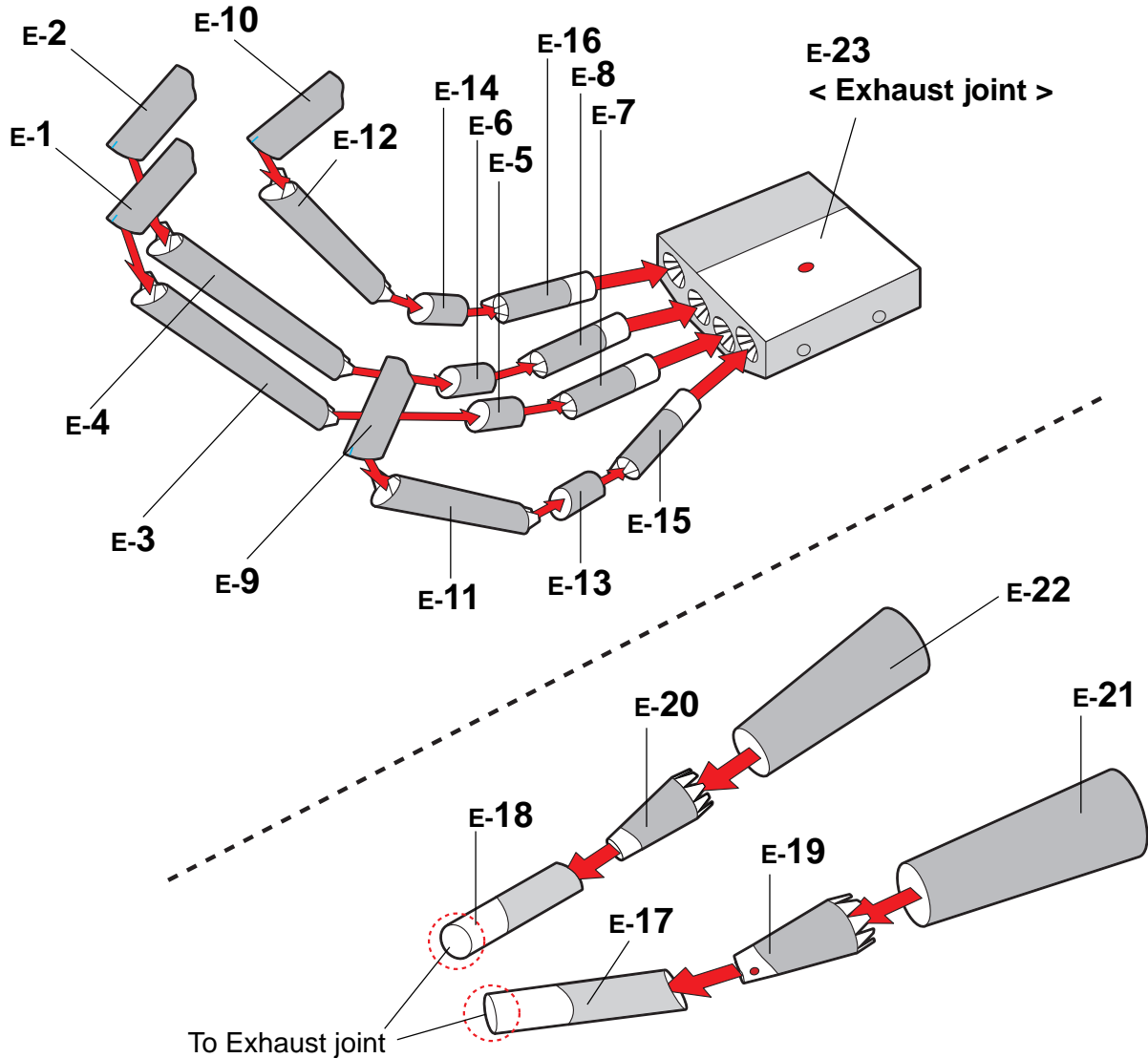
Glue

## Exhaust

Sheet E, 23 parts in total

Fold each relevant part according to the assembly symbols.

Please use the ● dots on each component as reference when gluing surfaces.



### Reference photo

Referring to the photo on the right, be careful of the angle when gluing each part.

