

# YK350TW

Orbit type



- Arm length 350mm
- Maximum payload 5kg

## Ordering method

**YK350TW-130**

**RCX340-4**

<b>Model</b>	<b>Z axis stroke</b> 130: 130mm	<b>Tool flange</b> No entry: None F: With tool flange	<b>Hollow shaft</b> No entry: None S: With hollow shaft	<b>Cable</b> 3L: 3.5m 5L: 5m 10L: 10m	<b>Controller / Number of controllable axes</b>	<b>Safety standard</b>	<b>Option A (OP.A)</b>	<b>Option B (OP.B)</b>	<b>Option C (OP.C)</b>	<b>Option D (OP.D)</b>	<b>Option E (OP.E)</b>	<b>Absolute battery</b>
--------------	------------------------------------	---	---	--	---	------------------------	------------------------	------------------------	------------------------	------------------------	------------------------	-------------------------

Specify various controller setting items. RCX340 ▶ **P.566**

## Specifications

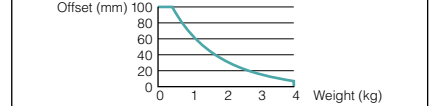
Axis specifications	Arm length	X-axis	Y-axis	Z-axis	R-axis
	175 mm	175 mm	175 mm	130 mm	-
	Rotation angle	+/-225 °	+/-225 °	-	+/-720 °
	AC servo motor output	750 W	400 W	200 W	105 W
Deceleration mechanism	Transmission method	Timing belt	Direct-coupled	Timing belt	Timing belt
	Motor to speed reducer	Timing belt	Direct-coupled	Timing belt	
	Speed reducer to output	Direct-coupled			
Repeatability	Note 1	+/-0.01 mm		+/-0.01 mm	+/-0.01 °
Maximum speed	Note 2	5.6 m/sec		1.5 m/sec	3000 °/sec
Maximum payload	Note 2	5 kg			
Standard cycle time: with 1kg payload	Note 3	0.32 sec			
R-axis tolerable moment of inertia	Rated	0.005 kgm <sup>2</sup>			
	Maximum	0.05 kgm <sup>2</sup>			
User wiring		0.15 sq × 8 wires			
User tubing (Outer diameter)		φ 6 × 2			
Travel limit		1.Soft limit 2.Mechanical stopper (X,Y,Z axis)			
Robot cable length		Standard: 3.5 m Option: 5 m, 10 m			
Weight		26 kg			

Note 1. This is the value at a constant ambient temperature.  
 Note 2. Tool flange specifications (option) are 4 kg.  
 Note 3. When moving a 1 kg load back and forth 300mm horizontally and 25mm vertically (rough positioning arch motion).  
 Note 4. The acceleration coefficient is set automatically in accordance with the tip weight and R-axis moment of inertia settings.

## Controller

Controller	Power capacity (VA)	Operation method
RCX340	2500	Programming / I/O point trace / Remote command / Operation using RS-232C communication

### R-axis moment of inertia (load inertia)

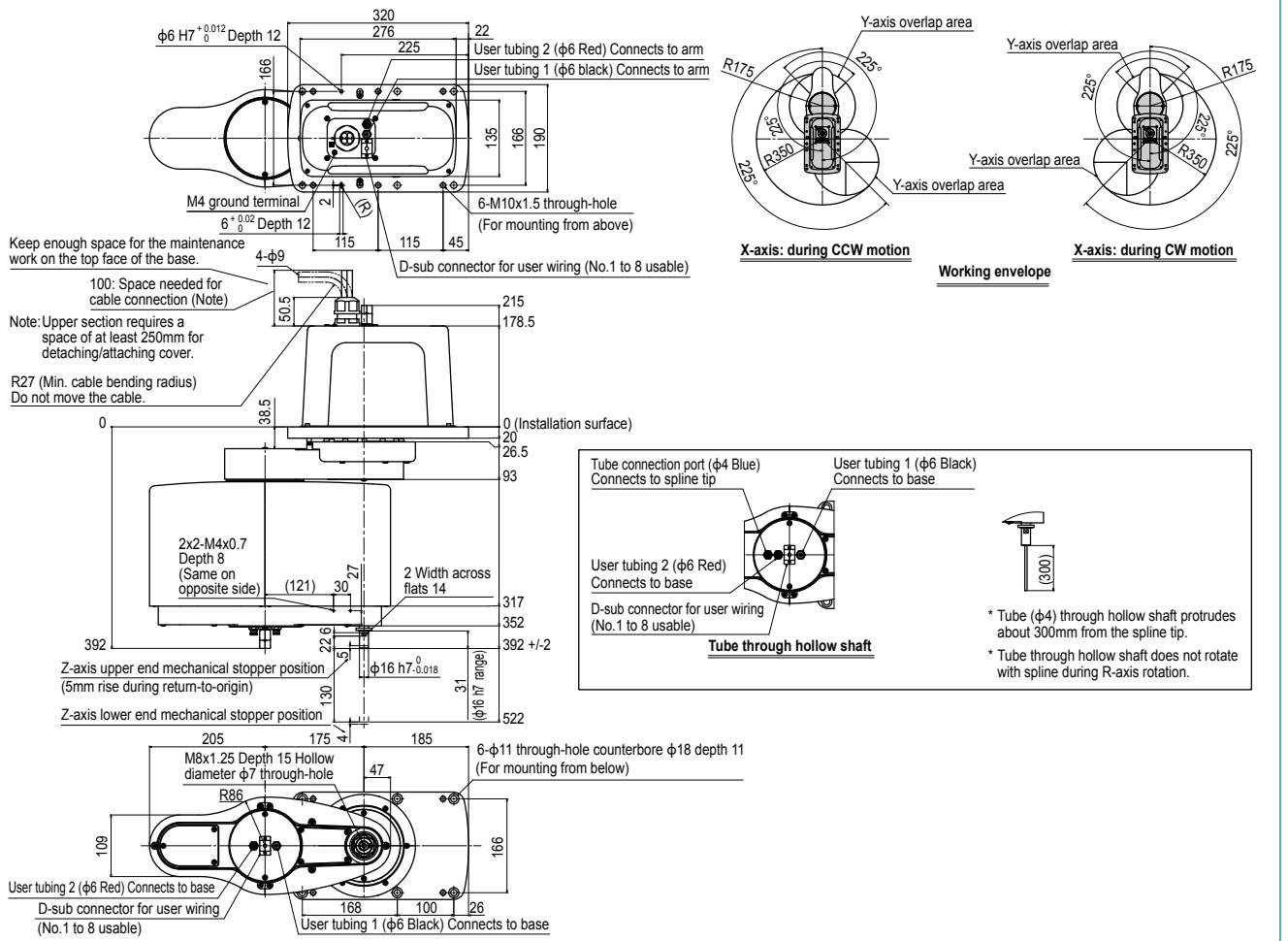


Note. When the payload exceeds 4kg, it is predicted that the R-axis moment of inertia may exceed the rated value. So, make proper parameter setting.

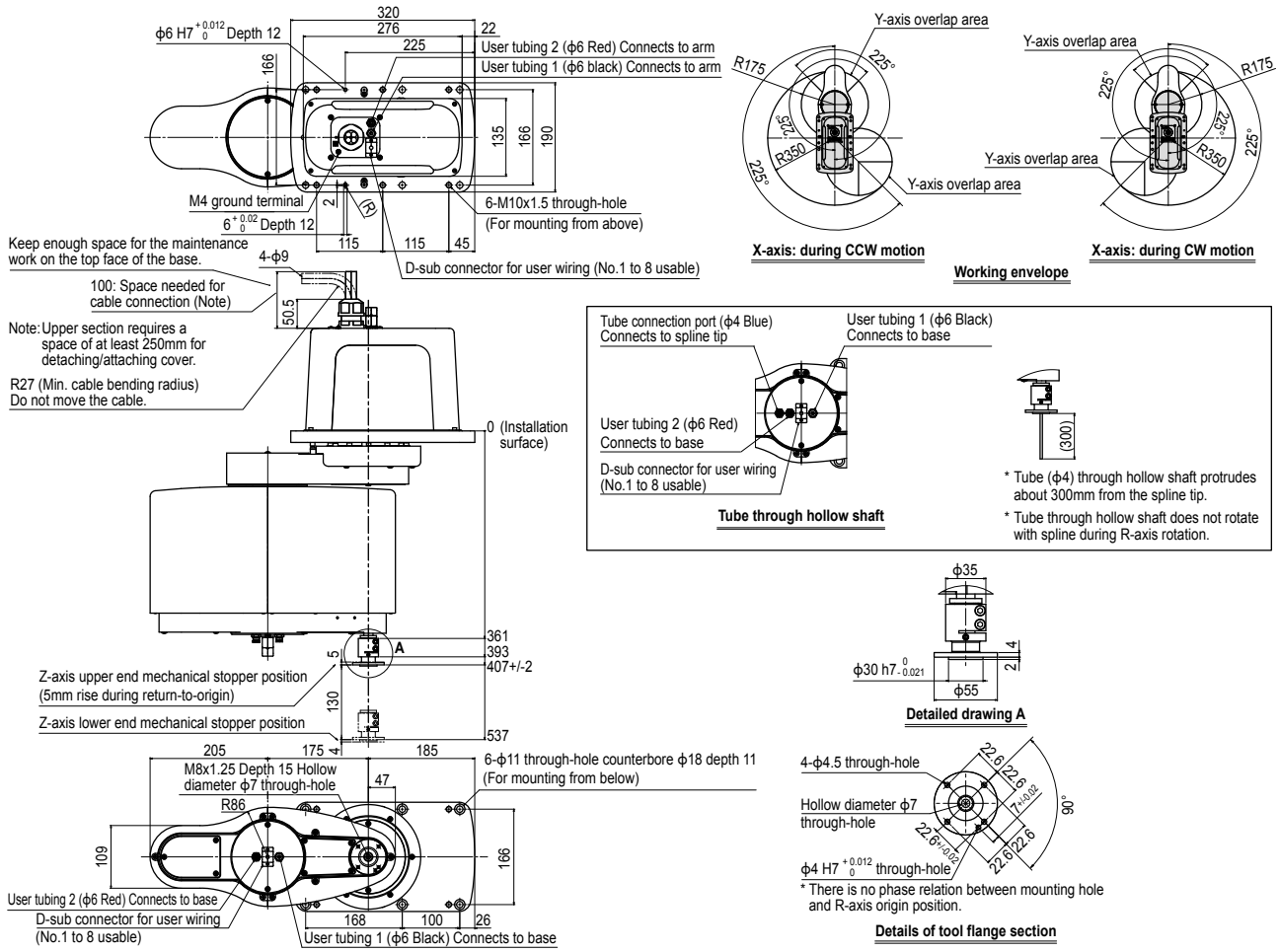
Note. To set the standard coordinates with high accuracy, use a standard coordinate setting jig (option). Refer to the user's manual (installation manual) for more details.

Our robot manuals (installation manuals) can be downloaded from our website at the address below:  
<https://global.yamaha-motor.com/business/robot/>

## YK350TW



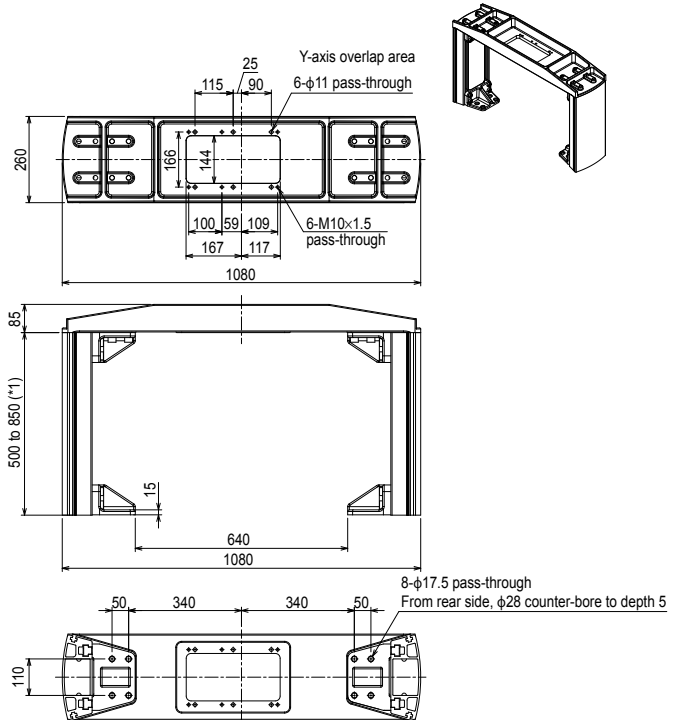
YK350TW Tool flange mount type



**Dedicated mounting bracket for the YK-TW <BASE POST ASSY.>**

The YK-TW can be easily installed on top of a customer-provided stand.

● External diagram for the YK350TW



The mounting bracket is assembled by the customer. Refer to the included assembly diagram for assembly.

\*1. Identical to the height of the robot mounting surface. The height of the stand can be selected at a 50 mm pitch.

Height (mm)	Model	Unit weight (kg)
500	KDU-M6100-P0	46
550	KDU-M6100-50	48
600	KDU-M6100-R0	50
650	KDU-M6100-60	51
700	KDU-M6100-S0	54
750	KDU-M6100-70	55
800	KDU-M6100-T0	57
850	KDU-M6100-80	59

\* YK350TW and YK500TW are parts in common.  
 \* The top plate by itself weighs 19 kg.

- Articulated robots  
YA
- Linear conveyor modules  
LCM100
- Motor-less single axis actuator  
Robonity
- Compact single-axis robots  
TRANSEVO
- Single-axis robots  
FLIP-X
- Linear motor single-axis robots  
PHASER
- Cartesian robots  
XY-X
- SCARA robots  
YK-X
- Pick & place robots  
YP-X
- CLEAN
- CONTROLLER INFORMATION
- Orbit type
- Small / Medium type
- Large type
- Wall mount / Inverse type
- Dust-proof & drip-proof type