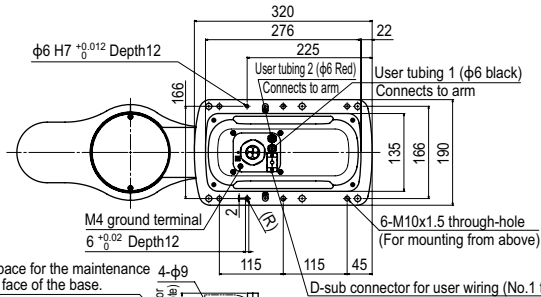


YK500TW Tool flange mount type

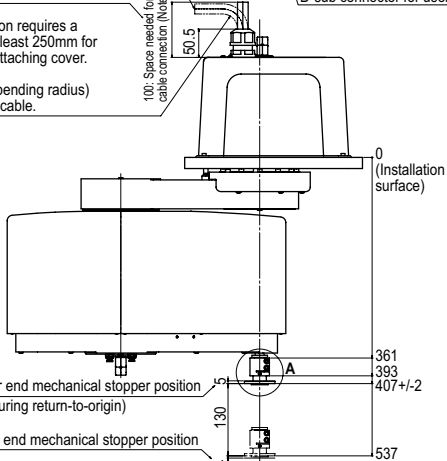


Keep enough space for the maintenance work on the top face of the base.

Note: Upper section requires a space of at least 250mm for detaching/attaching cover.

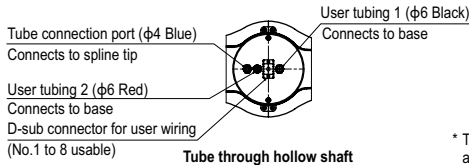
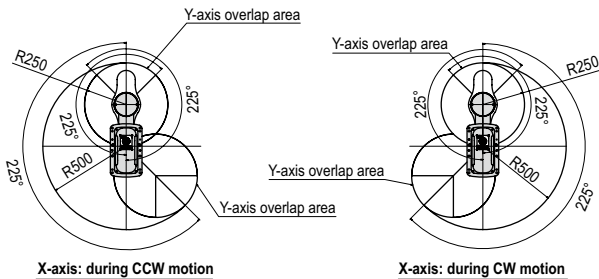
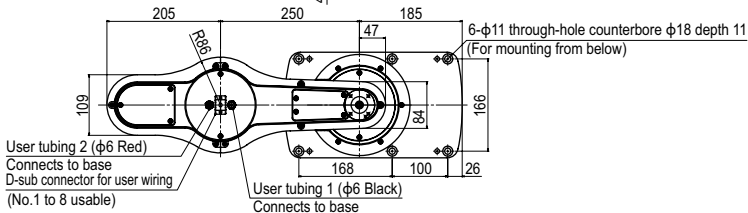
R27 (Min. cable bending radius)
Do not move the cable.

100: Space needed for cable connection (Note)

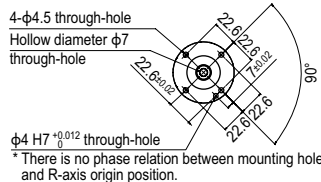
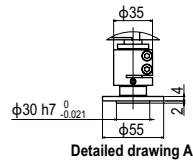


Z-axis upper end mechanical stopper position
(5mm rise during return-to-origin)

Z-axis lower end mechanical stopper position



* Tube ($\phi 4$) through hollow shaft protrudes about 300mm from the spline tip.
* Tube through hollow shaft does not rotate with spline during R-axis rotation.



Details of tool flange section