

YK1200XG

Standard type: Large type



- Arm length 1200mm
- Maximum payload 50kg

Ordering method

YK1200XG - 400

Model	Z axis stroke	Tool flange	User Wiring	Cable
		No entry: None F: With tool flange	No entry: None UW: User Wiring ^{Note 4}	3L: 3.5m 5L: 5m 10L: 10m

RCX341-4

Controller / Number of controllable axes

R

Regenerative unit

Option A (OPA)

Option B (OPB)

Option C (OPC)

Option D (OPD)

Option E (OPE)

Absolute battery

Specify various controller setting items. RCX340 ▶ **P.636**

Specifications

Axis specifications	Arm length	X-axis	Y-axis	Z-axis	R-axis
	Rotation angle	600 mm	600 mm	400 mm	—
		+/-130 °	+/-150 °	+/-360 °	+/-360 °
AC servo motor output		950 W	400 W	750 W	400 W
Deceleration mechanism	Transmission method	Direct-coupled			
	Motor to speed reducer	Direct-coupled			
Speed reducer to output					
Repeatability ^{Note 1}		+/-0.05 mm		+/-0.02 mm	+/-0.005 °
Maximum speed		7.7 m/sec		1.6 m/sec	600 °/sec
Maximum payload		50 kg			
Standard cycle time: with 5kg payload ^{Note 2}		0.61 sec			
R-axis tolerable moment of inertia ^{Note 3}		2.45 kgm ²			
User wiring		0.2 sq × 12 wires			
User tubing (Outer diameter)		φ 6 × 3			
Travel limit		1.Soft limit 2.Mechanical stopper (X,Y,Z axis)			
Robot cable length		Standard: 3.5 m Option: 5 m, 10 m			
Weight		96 kg			

Note 1. This is the value at a constant ambient temperature. (X,Y axes)
Note 2. When reciprocating 300mm in horizontal and 25mm in vertical directions.
Note 3. The acceleration coefficient is set automatically in accordance with the tip weight and R-axis moment of inertia settings.
Note 4. User wiring stays (optional) are parts required for additional installation of user wiring. Installation on the robot must be performed by the customer.

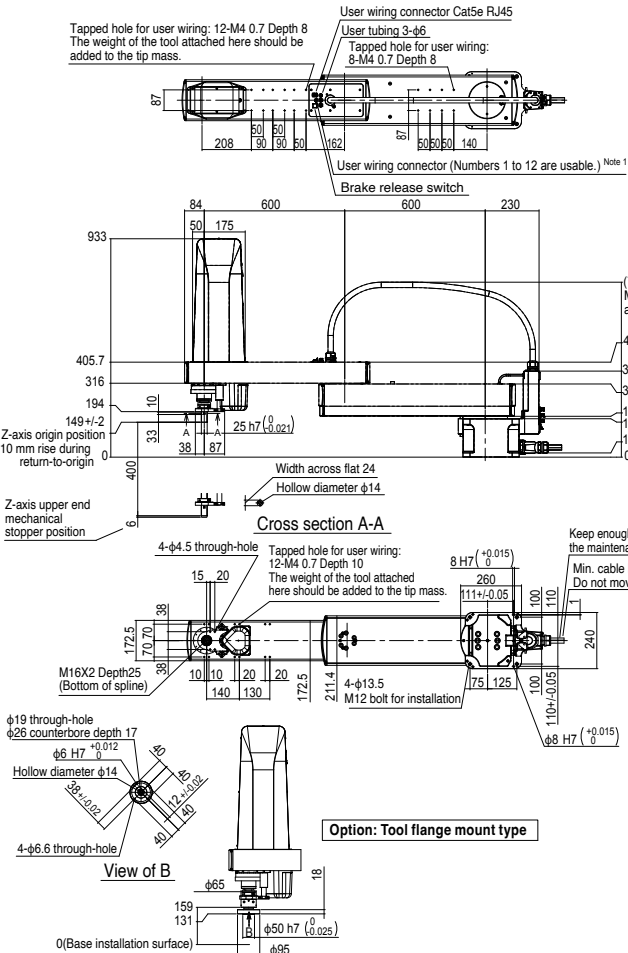
Controller

Controller	Power capacity (VA)	Operation method
RCX341	2500	Programming / I/O point trace / Remote command / Operation using RS-232C communication

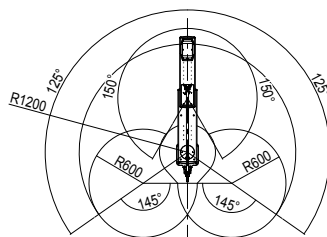
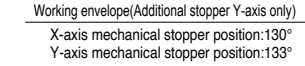
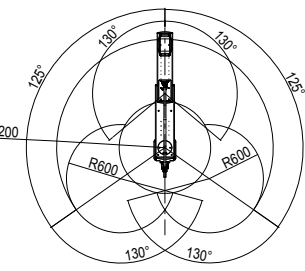
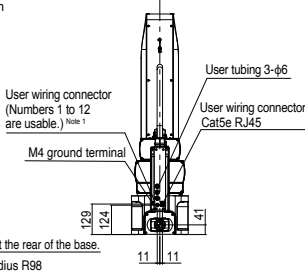
Note. The movement range can be limited by changing the positions of X and Y axis mechanical stoppers. (The movement range is set to the maximum at the time of shipment.)
See our robot manuals (installation manuals) for detailed information.

Our robot manuals (installation manuals) can be downloaded from our website at the address below:
<https://global.yamaha-motor.com/business/robot/>

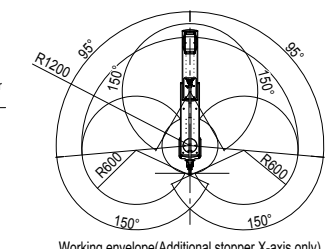
YK1200XG



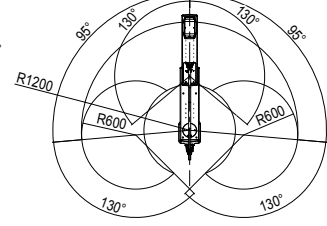
Note 1
HIROSE ELECTRIC CO., LTD.
Housing: DF62B-13S-2.2C(11)
Contact: DF62-2428SC included



Working envelope (Standard)
X-axis mechanical stopper position: 130°
Y-axis mechanical stopper position: 154°



Working envelope (Additional stopper X-axis only)
X-axis mechanical stopper position: 100°
Y-axis mechanical stopper position: 154°



Working envelope (Additional stopper X-axis, Y-axis)
X-axis mechanical stopper position: 100°
Y-axis mechanical stopper position: 133°