

# YK700XGS

Wall mount / inverse type

● Arm length 700mm ● Maximum payload 20kg

## Ordering method

<b>YK700XGS</b>					<b>RCX340-4</b>								
Model	Installation method <sup>Note 1</sup>	Z axis stroke	Tool flange	Cable	Controller / Number of controllable axes	Safety standard	Option A (OP.A)	Option B (OP.B)	Option C (OP.C)	Option D (OP.D)	Option E (OP.E)	Absolute battery	
	W: Wall mount (same as per external view) U: Inverse wall mount (upside down)	200: 200mm 400: 400mm	No entry: None F: With tool flange	3L: 3.5m 5L: 5m 10L: 10m									

Specify various controller setting items. RCX340 ▶ **P.566**

Note 1. When installing the robot, always follow the specifications.  
Do not install the ceiling-mount robot upside down or do not install the inverse type robot to a ceiling.  
Incorrect installation can cause trouble or malfunction.

## Specifications

	X-axis	Y-axis	Z-axis	R-axis
<b>Axis specifications</b>				
Arm length	300 mm	400 mm	200 mm/400 mm	—
Rotation angle	+/-130 °	+/-130 °	—	+/-360 °
<b>AC servo motor output</b>	750 W	400 W	400 W	200 W
<b>Deceleration mechanism</b>	Transmission method: Direct-coupled Motor to speed reducer: Direct-coupled Speed reducer to output: Direct-coupled			
<b>Repeatability</b> <sup>Note 1</sup>	+/-0.02 mm	+/-0.01 mm	+/-0.004 °	
<b>Maximum speed</b>	8.4 m/sec	2.3 m/sec	1.7 m/sec	920 °/sec (wall mount) 480 °/sec (inverse wall mount)
<b>Maximum payload</b>	20 kg (Standard type), 19 kg (Tool flange mount type)			
<b>Standard cycle time: with 2kg payload</b> <sup>Note 2</sup>	0.42 sec			
<b>R-axis tolerable moment of inertia</b> <sup>Note 3</sup>	1.0 kgm <sup>2</sup>			
<b>User wiring</b>	0.2 sq x 20 wires			
<b>User tubing (Outer diameter)</b>	φ 6 x 3			
<b>Travel limit</b>	1. Soft limit 2. Mechanical stopper (X,Y,Z axis)			
<b>Robot cable length</b>	Standard: 3.5 m Option: 5 m, 10 m			
<b>Weight</b>	Z axis 200 mm: 50 kg Z axis 400 mm: 52 kg			

Note 1. This is the value at a constant ambient temperature. (X,Y axes)  
Note 2. When reciprocating 300mm in horizontal and 25mm in vertical directions.  
Note 3. The acceleration coefficient is set automatically in accordance with the tip weight and R-axis moment of inertia settings.  
Note. Please consult YAMAHA when connecting other tubes and cables to the self-supporting machine harness.

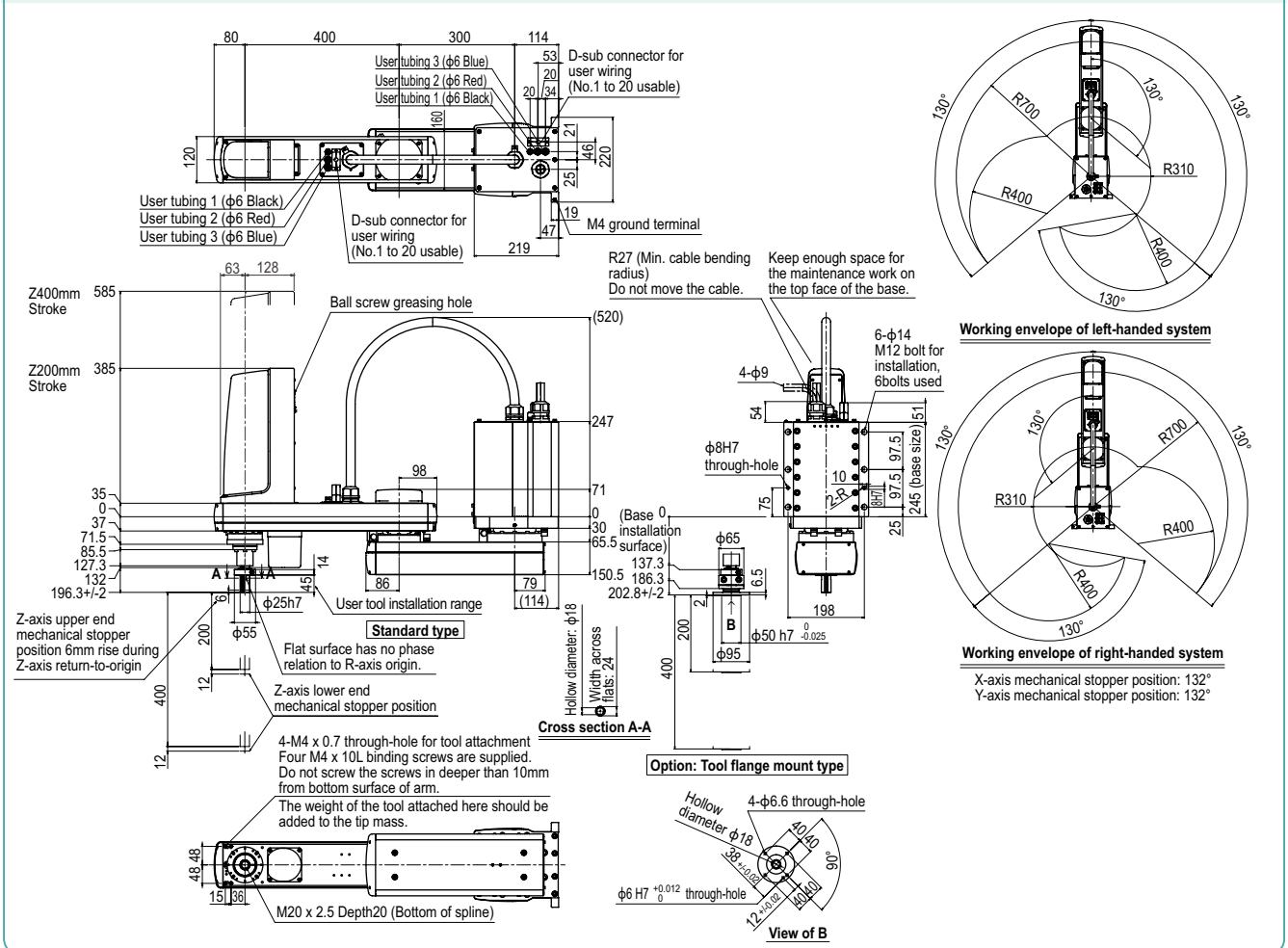
## Controller

Controller	Power capacity (VA)	Operation method
RCX340	2500	Programming / I/O point trace / Remote command / Operation using RS-232C communication

Note. The movement range can be limited by changing the positions of X and Y axis mechanical stoppers. (The movement range is set to the maximum at the time of shipment.)  
See our robot manuals (installation manuals) for detailed information.

Our robot manuals (installation manuals) can be downloaded from our website at the address below:  
<https://global.yamaha-motor.com/business/robot/>

## YK700XGS



Articulated robots  
**YA**  
 Linear conveyor modules  
**LCM100**  
 Motor-less single axis actuator  
**Robonity**  
 Compact single-axis robots  
**TRANSERVO**  
 Single-axis robots  
**FLIP-X**  
 Linear motor single-axis robots  
**PHASER**  
 Cartesian robots  
**XY-X**  
 SCARA robots  
**YK-X**  
 Pick & place robots  
**YP-X**  
 CLEAN  
 CONTROLLER INFORMATION  
 Extra small type  
 Orbit/ Small / Medium type  
 Large type  
 Wall mount / Inverse type  
 Dust-proof & drip-proof type