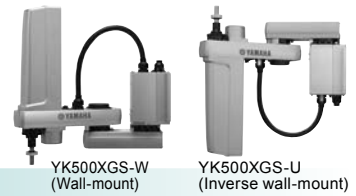


# YK500XGS

Wall-mount / inverse type

● Arm length 500mm ● Maximum payload 10kg



## Ordering method

### YK500XGS

Model	Installation method <sup>Note 1</sup>	Z axis stroke	Tool flange	Cable
	W: Wall-mount (same as per external view) U: Inverse wall-mount (upside down)	200: 200mm 300: 300mm	No entry: None F: With tool flange	3L: 3.5m 5L: 5m 10L: 10m

### RCX340-4

Controller / Number of controllable axes	Safety standard	Option A (OP.A)	Option B (OP.B)	Option C (OP.C)	Option D (OP.D)	Option E (OP.E)	Absolute battery
--	-----------------	-----------------	-----------------	-----------------	-----------------	-----------------	------------------

Specify various controller setting items. RCX340 ▶ **P.508**

### RCX240

Controller	CE Marking	Regenerative unit	Expansion I/O	Network option	IVY System	Gripper	Battery
------------	------------	-------------------	---------------	----------------	------------	---------	---------

Specify various controller setting items. RCX240/RCX240S ▶ **P.495**

Note 1. When installing the robot, always follow the specifications.  
Do not install the ceiling-mount robot upside down or do not install the inverse type robot to a ceiling.  
Incorrect installation can cause trouble or malfunction.

## Specifications

		X-axis	Y-axis	Z-axis	R-axis
Axis specifications	Arm length	200 mm	300 mm	200 mm/300 mm	—
	Rotation angle	+/-105 °	+/-125 °	—	+/-360 °
AC servo motor output		400 W	200 W	200 W	200 W
Deceleration mechanism	Speed reducer	Harmonic drive	Harmonic drive	Ball screw	Harmonic drive
	Transmission method	Direct-coupled			
	Motor to speed reducer	Direct-coupled			
	Speed reducer to output	Direct-coupled			
Repeatability <sup>Note 1</sup>		+/-0.01 mm		+/-0.01 mm	+/-0.004 °
Maximum speed		7.6 m/sec		2.3 m/sec	1.7 m/sec
Maximum payload		10 kg (Standard specification), 9 kg (Option specifications)			
Standard cycle time: with 2kg payload <sup>Note 2</sup>		0.45 sec			
R-axis tolerable moment of inertia <sup>Note 3</sup>		0.30 kgm <sup>2</sup>			
User wiring		0.2 sq × 20 wires			
User tubing (Outer diameter)		φ 6 × 3			
Travel limit		1.Soft limit 2.Mechanical stopper (X,Y,Z axis)			
Robot cable length		Standard: 3.5 m Option: 5 m, 10 m			
Weight		30 kg			

## Controller

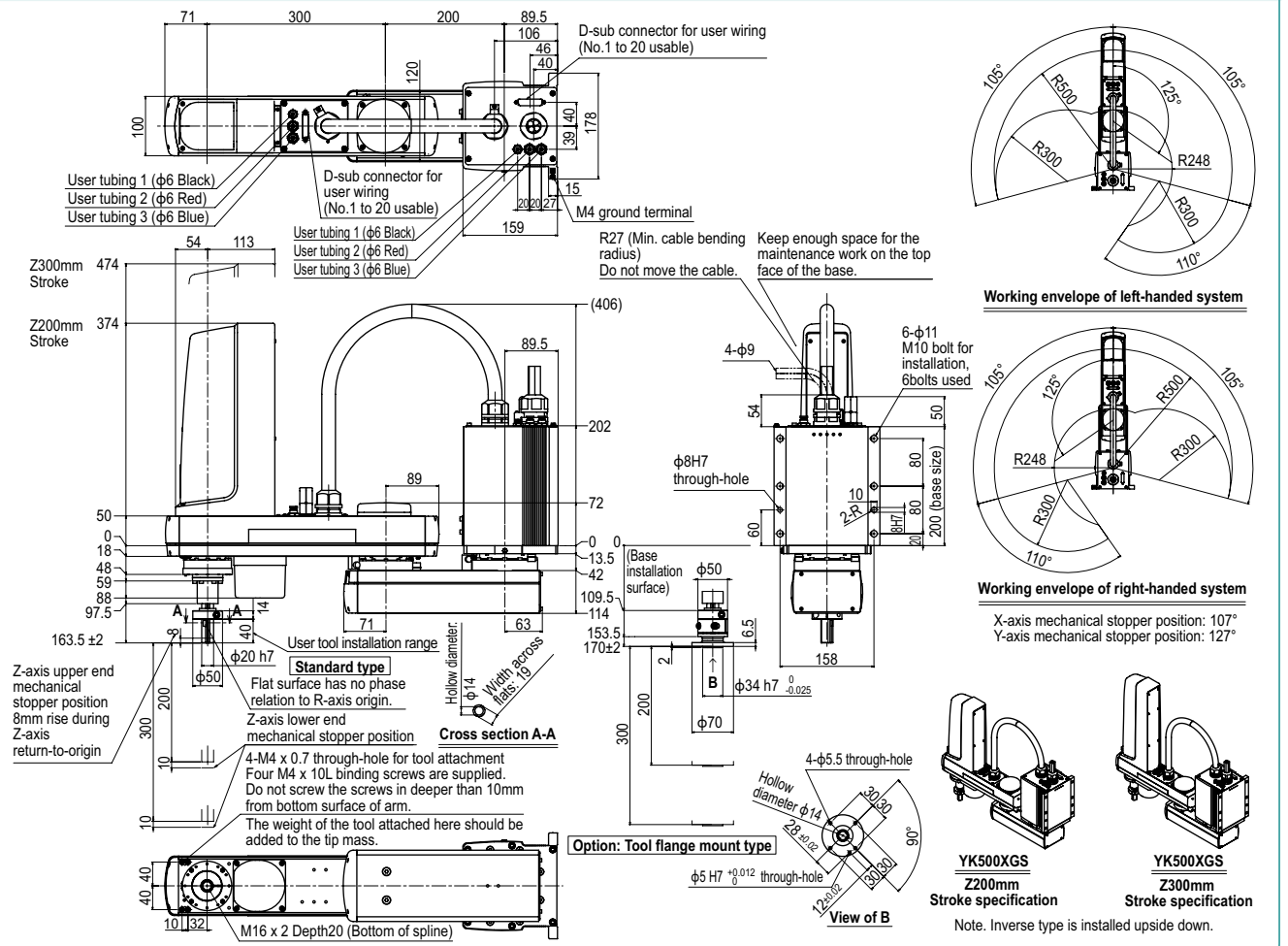
Controller	Power capacity (VA)	Operation method
RCX340 RCX240-R3	1700	Programming / I/O point trace / Remote command / Operation using RS-232C communication

Note. "Harmonic" and "Harmonic drive" are the registered trademarks of Harmonic Drive Systems Inc.  
Note. The movement range can be limited by changing the positions of X and Y axis mechanical stoppers. (The movement range is set to the maximum at the time of shipment.)  
See our robot manuals (installation manuals) for detailed information.

Our robot manuals (installation manuals) can be downloaded from our website at the address below:  
<http://global.yamaha-motor.com/business/robot/>

Note 1. This is the value at a constant ambient temperature. (X,Y axes)  
Note 2. When reciprocating 300mm in horizontal and 25mm in vertical directions.  
Note 3. There are limits to acceleration coefficient settings. See P.539.  
Note. Please consult YAMAHA when connecting other tubes and cables to the self-supporting machine harness.

## YK500XGS



Controller

RCX340 ▶ 508 RCX240 ▶ 495