



Pole type

Whipover

Z-axis: Clamped table / moving base type (200W) for Pole type

### Ordering method

**HXYx - S - P1**      **RCX340-3**

Model	Cable	Combination	Y-axis stroke <sup>Note 1</sup>	Y-axis stroke <sup>Note 1</sup>	ZR-axis	Z-axis stroke	Cable	Controller / Number of controllable axes	Safety standard	Option A (OP.A)	Option B (OP.B)	Option C (OP.C)	Option D (OP.D)	Option E (OP.E)	Absolute battery
			25 to 85cm	25 to 85cm	ZPHL ZPHR	25 to 65cm	3L: 3.5m 5L: 5m 10L: 10m	Specify various controller setting items. RCX340 ▶ <b>P.566</b>							

Note 1. The total of the X and Y strokes should be 1100mm or less and that of the Y and Z strokes should be 1200mm or less.

### Specification

	X-axis	Y-axis	Z-axis
<b>Axis construction</b> <sup>Note 1</sup>	F20	F20-BK	F14H
<b>AC servo motor output (W)</b>	600	600	200
<b>Repeatability</b> <sup>Note 2</sup> (mm)	+/-0.01	+/-0.01	+/-0.01
<b>Drive system</b>	Ball screw $\phi 20$	Ball screw $\phi 20$	Ball screw $\phi 15$
<b>Ball screw lead</b> <sup>Note 3</sup> (Deceleration ratio) (mm)	20	10	20
<b>Maximum speed</b> <sup>Note 4</sup> (mm/sec)	1200	600	1200
<b>Moving range (mm)</b>	250 to 850	250 to 850	250 to 650
<b>Robot cable length (m)</b>	Standard: 3.5 Option: 5,10		

Note 1. Use caution that the flame machining (installation holes, tap holes) differs from single-axis robots.

Note 2. Positioning repeatability in one direction.

Note 3. Leads not listed in the catalog are also available. Contact us for details.

Note 4. When the X-axis/Y-axis stroke is longer than 850mm, resonance of the ball screw may occur depending on the operation conditions (critical speed). In this case, reduce the speed setting on the program by referring to the maximum speeds shown in the table below.

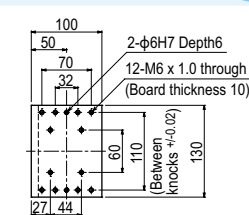
### Maximum payload (kg)

Y stroke (mm)	Z stroke (mm)
250 to 850	15

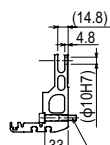
### Controller

Controller	Operation method
RCX340	Programming / I/O point trace / Remote command / Operation using RS-232C communication

### HXYx 3 axes / ZPHL (P1)

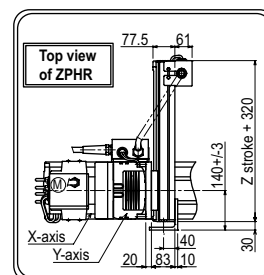
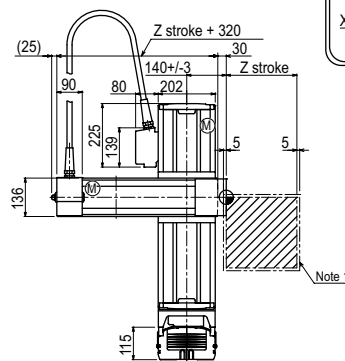
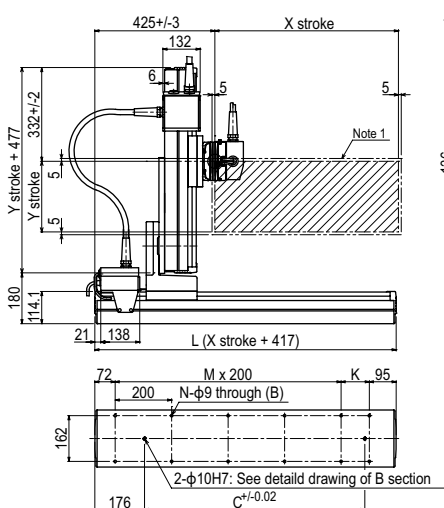
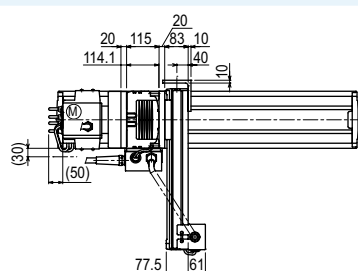
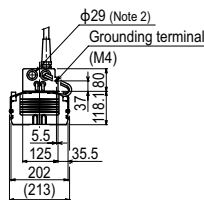


Detail of section A



Use M8 x 1.25 hex socket head bolt with length head bolt with length (under head) of 45mm or more.

Detail of section B



X stroke <sup>Note 4</sup>	250	350	450	550	650	750	850	
	L	667	767	867	967	1067	1167	1267
K	100	200	100	200	100	200	100	
D	420	420	600	600	780	780	960	
M	2	2	3	3	4	4	5	
N	8	8	10	10	12	12	14	
Y stroke <sup>Note 4</sup>	250	350	450	550	650	750	850	
Z stroke	250	350	450	550	650			
Maximum speed for each stroke (mm/sec) <sup>Note 5</sup>	X-axis	1200					960	
	Y-axis	600					480	
	Speed setting	-					80%	

Note 1. The moving range when returning to origin and the stop position when stopping by the mechanical stopper.

Note 2. User cable extraction port.

Note 3. This figure shows the combination for ZPHL. For the combination for ZPHR, see the top view in the figure.

Note 4. The total of the X and Y strokes should be 1100mm or less and that of the Y and Z strokes should be 1200mm or less.

Note 5. When the X-axis/Y-axis stroke is longer than 850mm, resonance of the ball screw may occur depending on the operation conditions (critical speed). In this case, reduce the speed setting on the program by referring to the maximum speeds shown in the table at the left.

Articulated robots  
YA

Linear conveyor modules  
LCM100

Motor-less single axis actuator  
Robonity

Compact single-axis robots  
TRANSEVO

Single-axis robots  
FLIP-X

Linear motor single-axis robots  
PHASER

Cartesian robots  
XY-X

SCARA robots  
YK-X

Pick & place robots  
YP-X

CLEAN

CONTROLLER INFORMATION

Arm type

Gantry type

Moving arm type

Pole type

XZ type