

# NXY-W 4 axes



- Arm type
- Cable carrier
- Double Y axes specifications

## Ordering method

**NXY - C - WA1** [ ] [ ] [ ] **RCX340-4** [ ] [ ] [ ] [ ] [ ] [ ] [ ] [ ] [ ] [ ]

Model	Cable	Combination	X-axis stroke 25 to 175cm	Y-axis stroke 15 to 65cm <sup>Note 1</sup>	Cable 3L: 3.5m 5L: 5m 10L: 10m	Controller / Number of controllable axes	Safety standard	Option A (OP.A)	Option B (OP.B)	Option C (OP.C)	Option D (OP.D)	Option E (OP.E)	Absolute battery
-------	-------	-------------	------------------------------	---	---	---	--------------------	--------------------	--------------------	--------------------	--------------------	--------------------	---------------------

Specify various controller setting items. RCX340 ▶ **P.566**

Note 1. When the Y-axis stroke is different between the right and left, it will be an order-made.

## Specification

	X-axis	Y-axis <sup>Note 1</sup>
<b>Axis construction</b> <sup>Note 2</sup>	N15D	F14
<b>AC servo motor output (W)</b>	400	100
<b>Repeatability</b> <sup>Note 3</sup> (mm)	+/-0.01	+/-0.01
<b>Drive system</b>	Ball screw φ15	Ball screw φ15
<b>Ball screw lead</b> <sup>Note 4</sup> (Deceleration ratio) (mm)	20	20
<b>Maximum speed (mm/sec)</b>	1200	1200
<b>Moving range (mm)</b>	250 to 1750	150 to 650
<b>Robot cable length (m)</b>	Standard: 3.5 Option: 5,10	

Note 1. The same two Y axes are installed and they have same specifications. If axes of individually different stroke are desired, it will be an order-made. In that case, consult YAMAHA.  
 Note 2. Use caution that the frame machining (installation holes, tap holes) differs from single-axis robots.  
 Note 3. Positioning repeatability in one direction.  
 Note 4. Leads not listed in the catalog are also available. Contact us for details.

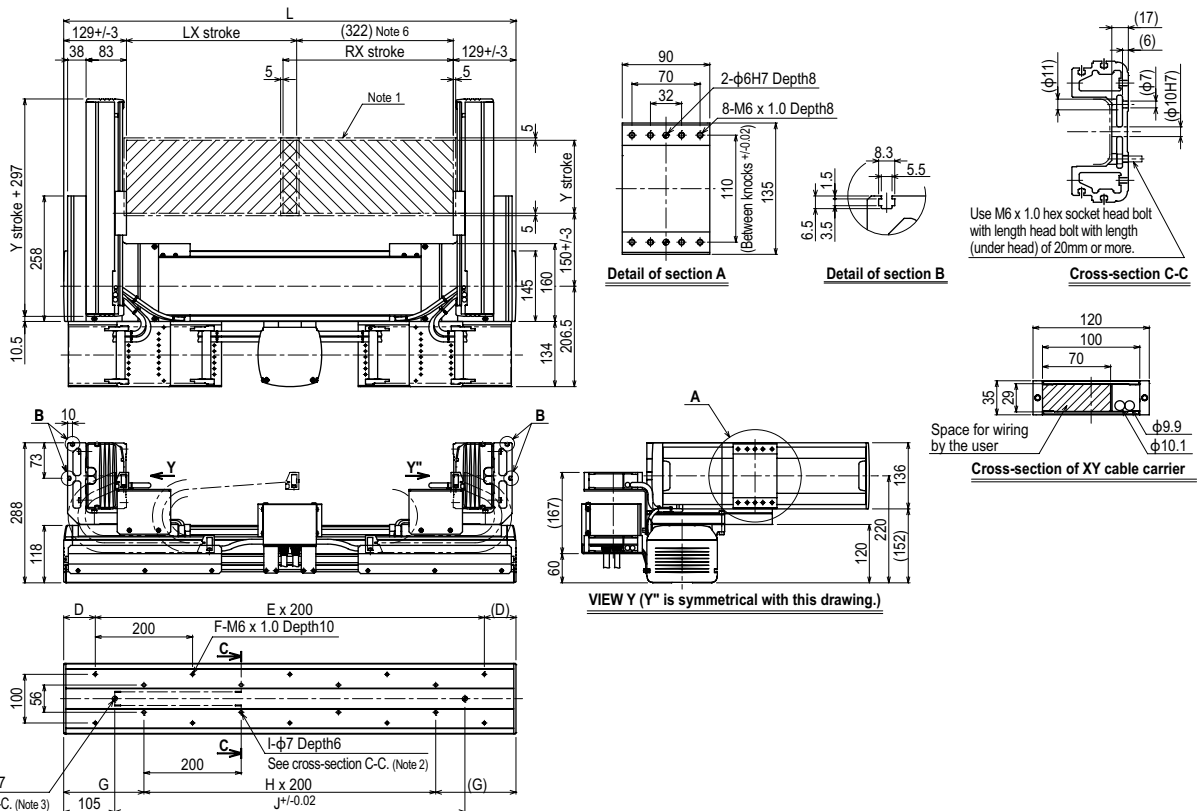
## Maximum payload (kg)

Y stroke (mm)	XY 2 axes
150	25
250	21
350	18
450	16
550	13
650	11

## Controller

Controller	Operation method
RCX340	Programming / I/O point trace / Remote command / Operation using RS-232C communication

## NXY-W 4 axes WA1



X stroke	250	350	450	550	650	750	850	950	1050	1150	1250	1350	1450	1550	1650	1750
<b>L</b>	830	930	1030	1130	1230	1330	1430	1530	1630	1730	1830	1930	2030	2130	2230	2330
<b>D</b>	15	65	15	65	15	65	15	65	15	65	15	65	15	65	15	65
<b>E</b>	4	4	5	5	6	6	7	7	8	8	9	9	10	10	11	11
<b>F</b>	10	10	12	12	14	14	16	16	18	18	20	20	22	22	24	24
<b>G</b>	115	165	115	165	115	165	115	165	115	165	115	165	115	165	115	165
<b>H</b>	3	3	4	4	5	5	6	6	7	7	8	8	9	9	10	10
<b>I</b>	8	8	10	10	12	12	14	14	16	16	18	18	20	20	22	22
<b>J</b>	620	720	820	920	1020	1120	1220	1320	1420	1520	1620	1720	1820	1920	2020	2120
<b>Y stroke</b>	150	250	350	450	550	650										

Note 1. The moving range when returning to origin and the stop position when stopping by the mechanical stopper.  
 Note 2. When using φ7 holes for installation, you must not use a washer, spring washer, etc. in the main unit.  
 Note 3. When using a φ10H7 hole, make sure that the pin does not go into deeper than as shown in the drawing.  
 Note 4. Use M4 tap of the box next to X axis for the user grounding terminal.  
 Note 5. The M4 taps at both ends of the cable carriage can be used for fixing cables.  
 Note 6. Minimum dimension between LX and RX sliders.