

HXYLx 2 axes

● Arm type ● Cable carrier



Ordering method

HXYLx - C

| Model | Cable | Combination | X-axis stroke | Y-axis stroke | Cable |
|-------|-------|-------------|---------------|---------------|----------|
| A1 | | | 115 to 205cm | 25 to 65cm | 3L: 3.5m |
| A2 | | | | | 5L: 5m |
| A3 | | | | | 10L: 10m |
| A4 | | | | | |

RCX320-2 **R**

| Controller / Number of controllable axes | Safety standard | Regenerative unit | Option A (OP.A) | Option B (OP.B) | Vision System | Absolute battery |
|--|-----------------|-------------------|-----------------|-----------------|---------------|------------------|
|--|-----------------|-------------------|-----------------|-----------------|---------------|------------------|

Specify various controller setting items. RCX320 ▶ **P.548**

RCX222HP **R**

| Controller | Usable for CE | Regenerative unit | I/O selection 1 | I/O selection 2 |
|------------|---------------|-------------------|-----------------|-----------------|
|------------|---------------|-------------------|-----------------|-----------------|

Specify various controller setting items. RCX222 ▶ **P.558**

Specification

| | X-axis | Y-axis |
|--|------------------------------|----------------|
| Axis construction <small>Note 1</small> | F20N | F17 |
| AC servo motor output (W) | 400 | 400 |
| Repeatability <small>Note 2</small> (mm) | +/-0.04 | +/-0.01 |
| Drive system | Ball screw φ20 | Ball screw φ20 |
| Ball screw lead <small>Note 3</small> (Deceleration ratio) (mm) | 20 | 20 |
| Maximum speed (mm/sec) | 1200 | 1200 |
| Moving range (mm) | 1150 to 2050 | 250 to 650 |
| Robot cable length (m) | Standard: 3.5 Option: 5,10 | |

Note 1. Use caution that the flange machining (installation holes, tap holes) differs from single-axis robots.
 Note 2. Positioning repeatability in one direction.
 Note 3. Leads not listed in the catalog are also available. Contact us for details.

Maximum payload (kg)

| Y stroke (mm) | XY 2 axes |
|---------------|-----------|
| 250 | 40 |
| 350 | 40 |
| 450 | 35 |
| 550 | 30 |
| 650 | 30 |

Controller

| Controller | Operation method |
|------------|--|
| RCX320-R | Programming / I/O point trace / Remote command / Operation using RS-232C communication |
| RCX222HP-R | |

HXYLx 2 axes A1

Detail of section B

Detail of section A

Detail of section C

Cross-section of cable carrier

Y stroke

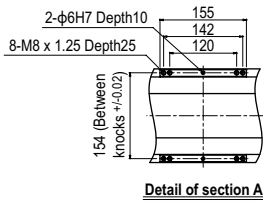
| X stroke | 1150 | 1250 | 1350 | 1450 | 1550 | 1650 | 1750 | 1850 | 1950 | 2050 |
|----------|------|------|------|------|------|------|------|------|------|------|
| L | 1570 | 1670 | 1770 | 1870 | 1970 | 2070 | 2170 | 2270 | 2370 | 2470 |
| D | 528 | 574 | 620 | 666 | 712 | 758 | 804 | 850 | 896 | 942 |
| K | 100 | 200 | 100 | 200 | 100 | 200 | 100 | 200 | 100 | 200 |
| M | 7 | 7 | 8 | 8 | 9 | 9 | 10 | 10 | 11 | 11 |
| N | 18 | 18 | 20 | 20 | 22 | 22 | 24 | 24 | 26 | 26 |

Y stroke

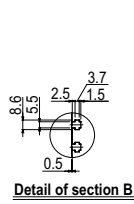
| Y stroke | 250 | 350 | 450 | 550 | 650 |
|----------|-----|-----|-----|-----|-----|
|----------|-----|-----|-----|-----|-----|

Note 1. The moving range when returning to origin and the stop position when stopping by the mechanical stopper.
 Note 2. The shaded position indicates a user cable extraction port.

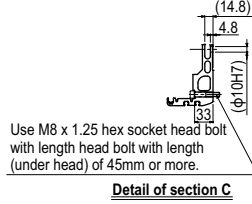
HXYLx 2 axes **A2**



Detail of section A

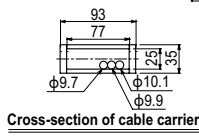
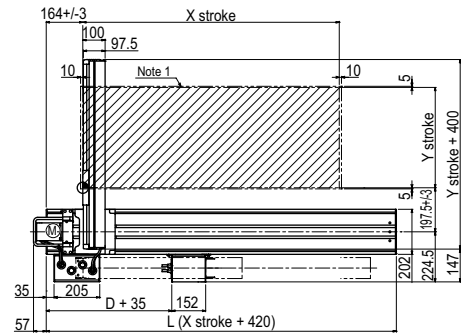


Detail of section B

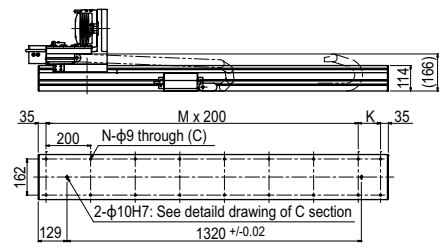
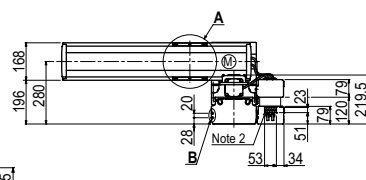


Detail of section C

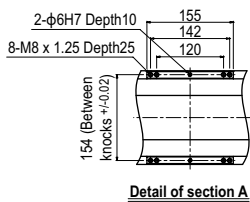
Use M8 x 1.25 hex socket head bolt with length head bolt with length (under head) of 45mm or more.



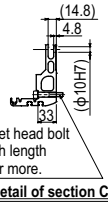
Cross-section of cable carrier



HXYLx 2 axes **A3**

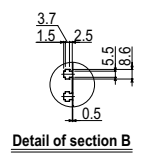
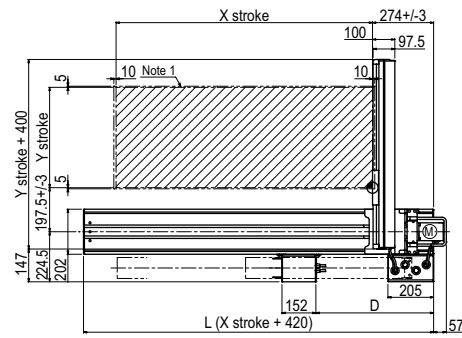


Detail of section A

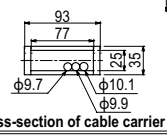


Detail of section C

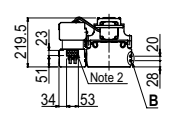
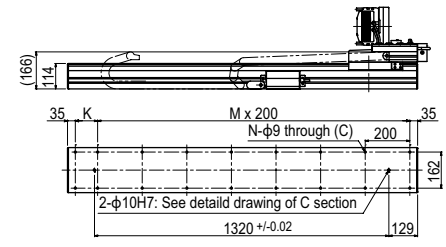
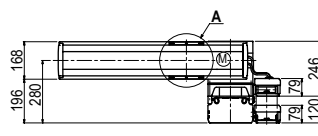
Use M8 x 1.25 hex socket head bolt with length head bolt with length (under head) of 45mm or more.



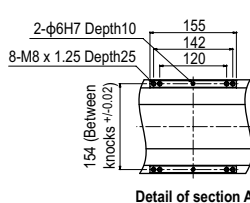
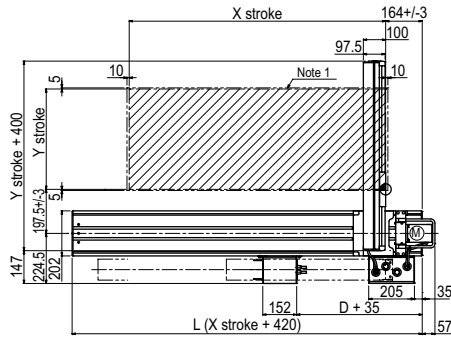
Detail of section B



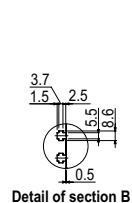
Cross-section of cable carrier



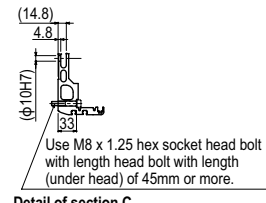
HXYLx 2 axes **A4**



Detail of section A

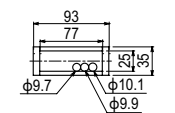


Detail of section B



Detail of section C

Use M8 x 1.25 hex socket head bolt with length head bolt with length (under head) of 45mm or more.



Cross-section of cable carrier

