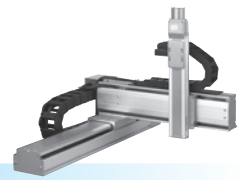


APPLICATION
TRANSEURO
FLIP-X
PHASER
XY-X
YK-XG
YP-X
CLEAN
CONTROLLER INFORMATION
Arm type
Gantry type
Moving arm
Pole type
XZ type

FXYx 3 axes / ZT

- Arm type
- Cable carrier
- Z-axis: clamped base / moving table type (60W)



Ordering method

FXYx - C				ZT6-12			RCX240				BB		
Model	Cable	Combination	X-axis stroke	Y-axis stroke	ZR-axis	Lead	Z-axis stroke	Cable length	Controller	Usable for CE	Option I/O <small>Note 1</small>	Network option	Battery
A1			15 to 105cm	15 to 55cm			5 to 30cm	3L: 3.5m (Standard) 5L: 5m 10L: 10m		No entry: Standard E: CE marking	N, P: Standard I/O 168 N1, P1: 40/24 N2, P2: 64/40 N3, P3: 88/56 N4, P4: 112/72	No entry: None CC: CC-Link DN: DeviceNet PB: Profibus EN: Ethernet YC: YC-Link <small>Note 3</small>	BB: 4 pcs
A2													
A3													
A4													

Note 1. N to N4 if NPN was selected, or P to P4 if PNP was selected for the I/O board.
Note 2. Available only for the master.

Specification

	X-axis	Y-axis	Z-axis
Axis construction <small>Note 1</small>	-	-	T6-12-BK
AC servo motor output (W)	100	60	60
Repeatability <small>Note 2</small> (mm)	+/-0.01	+/-0.02	+/-0.02
Drive system	Ball screw (Class C7)	Ball screw (Class C10)	Ball screw (Class C10)
Ball screw lead (Deceleration ratio) (mm)	20	12	12
Maximum speed <small>Note 3</small> (mm/sec)	1200	800	800
Moving range (mm)	150 to 1050	150 to 550	50 to 300
Robot cable length (m)	Standard: 3.5 Option: 5,10		

Note 1. Use caution that the flame machining (installation holes, tap holes) differs from single-axis robots.
Note 2. Positioning repeatability in one direction.
Note 3. When the X-axis stroke is longer than 750mm, resonance of the ball screw may occur depending on the operation conditions (critical speed). In this case, reduce the speed setting on the program by referring to the maximum speeds shown in the table below.

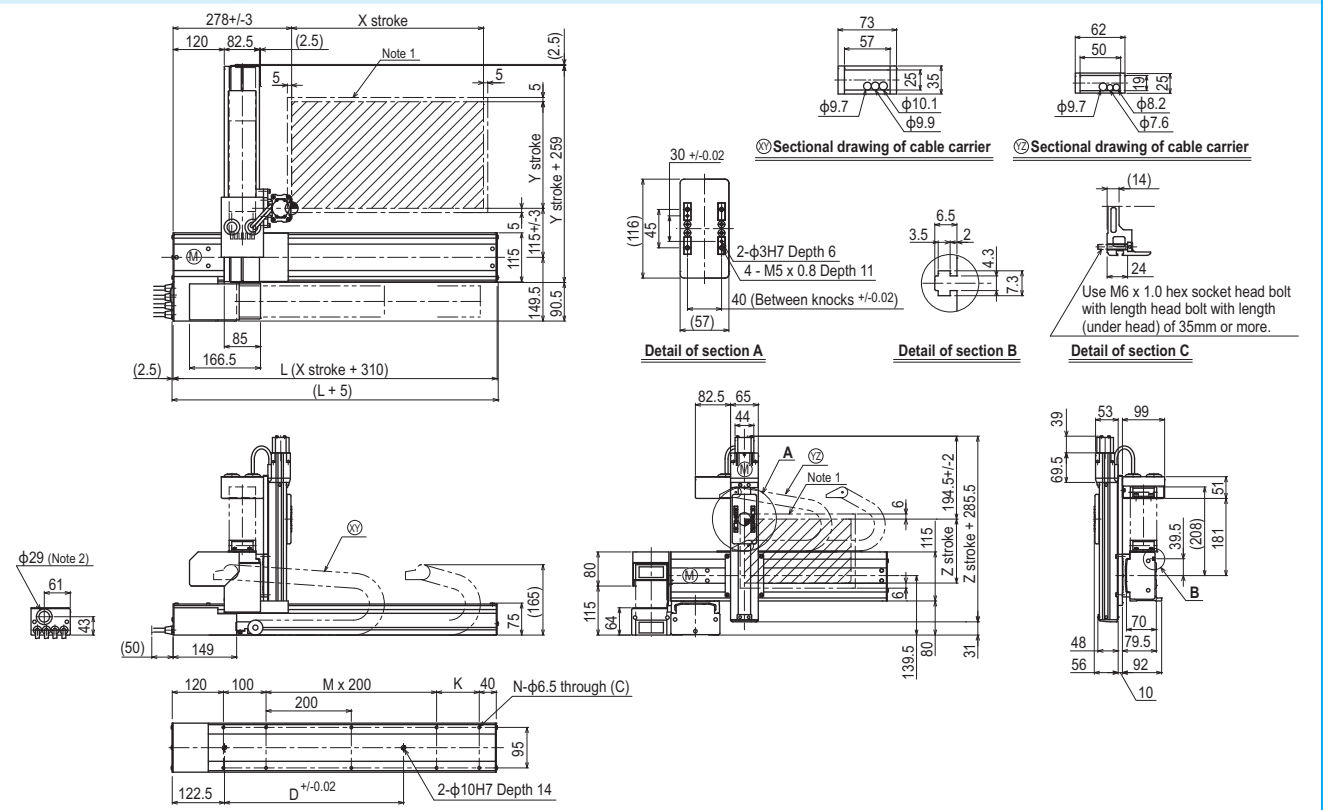
Maximum payload (kg)

Y stroke (mm)	ZT
150 to 550	3

Controller

Controller	Operation method
RCX240	Programming / I/O point trace / Remote command / Operation using RS-232C communication

FXYx 3 axes / ZT (A1)



X stroke	150	250	350	450	550	650	750	850	950	1050	
L	460	560	660	760	860	960	1060	1160	1260	1360	
K	200	100	200	100	200	100	200	100	200	100	
D	240	240	420	420	600	600	780	960	960	1140	
M	0	1	1	2	2	3	3	4	4	5	
N	6	8	8	10	10	12	12	14	14	16	
Y stroke	150	250	350	450	550						
Z stroke	50	100	150	200	250	300					
Maximum speed for each stroke (mm/sec) <small>Note 1</small>	X-axis		1200				960	780	600	540	
Speed setting			-				80%	65%	50%	45%	

Note 1. The moving range when returning to origin and the stop position when stopping by the mechanical stopper.
Note 2. User cable extraction port.

Note 3. When the X-axis stroke is longer than 750mm, resonance of the ball screw may occur depending on the operation conditions (critical speed). In this case, reduce the speed setting on the program by referring to the maximum speeds shown in the table at the left.