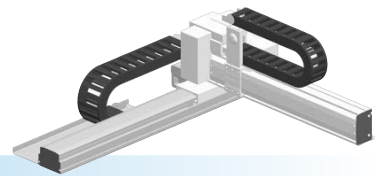


# FXyBx 2 axes / IO

- Arm type
- Cable carrier
- Type with Y-axis I/O cable carrier added



## Ordering method

<b>FXyBx - C</b>				<b>IO</b>		
Model	Cable	Combination	X-axis stroke	Y-axis stroke	ZR-axis	Cable
A1			15 to 245cm	15 to 55cm		3L: 3.5m
A2						5L: 5m
A3						10L: 10m
A4						

<b>RCX320-2</b>					
Controller / Number of controllable axes	Safety standard	Option A (OP.A)	Option B (OP.B)	Vision System	Absolute battery
Specify various controller setting items. RCX320 ▶ P.548					

<b>RCX222</b>			
Controller	Usable for CE	I/O selection 1	I/O selection 2
Specify various controller setting items. RCX222 ▶ P.558			

## Specification

	X-axis	Y-axis
<b>Axis construction</b> <sup>Note 1</sup>	B10	-
<b>AC servo motor output (W)</b>	100	100
<b>Repeatability</b> <sup>Note 2</sup> (mm)	+/-0.04	+/-0.04
<b>Drive system</b>	Timing belt	Timing belt
<b>Ball screw lead</b> <sup>Note 3</sup> (Deceleration ratio) (mm)	Equivalent to lead 25	Equivalent to lead 25
<b>Maximum speed (mm/sec)</b>	1875	1875
<b>Moving range (mm)</b>	150 to 2450	150 to 550
<b>Robot cable length (m)</b>	Standard: 3.5 Option: 5,10	

Note 1. Use caution that the flame machining (installation holes, tap holes) differs from single-axis robots.  
 Note 2. Positioning repeatability in one direction.  
 Note 3. Leads not listed in the catalog are also available. Contact us for details.

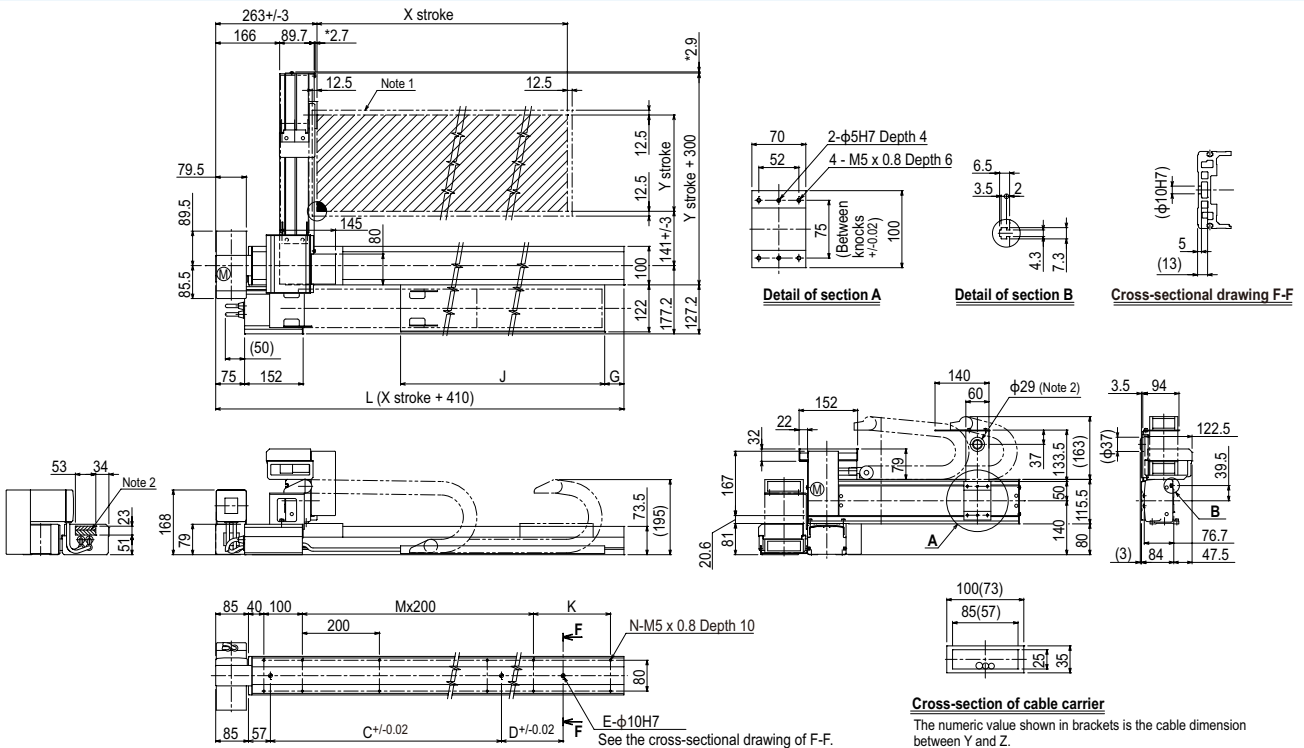
## Maximum payload (kg)

Y stroke (mm)	XY 2 axes
150	7
250	6
350	5
450	5
550	3

## Controller

Controller	Operation method
RCX320	Programming / I/O point trace / Remote command / Operation using RS-232C communication
RCX222	

## FXyBx 2 axes / IO (A1)



Note 1. The moving range when returning to origin and the stop position when stopping by the mechanical stopper. Note 3. The dimension marked with an asterisk (\*) indicates the height of the screw.  
 Note 2. The shaded position indicates an user cable extraction port.

X stroke	150	250	350	450	550	650	750	850	950	1050	1150	1250	1350	1450	1550	1650	1750	1850	1950	2050	2150	2250	2350	2450
<b>L</b>	560	660	760	860	960	1060	1160	1260	1360	1460	1560	1660	1760	1860	1960	2060	2160	2260	2360	2460	2560	2660	2760	2860
<b>C</b>	240	420	600	600	780	780	960	960	1140	1140	1320	1320	1320	1320	1320	1320	1320	1320	1320	1320	1320	1320	1320	1320
<b>D</b>	-	-	-	-	-	-	-	-	-	-	-	240	240	420	420	600	780	780	960	960	1140	1140	1320	1320
<b>E</b>	2	2	2	2	2	2	2	2	2	2	2	2	3	3	3	3	3	3	3	3	3	3	3	3
<b>G</b>	0	50	0	50	0	50	0	50	0	50	0	50	0	50	0	50	0	50	0	50	0	50	0	50
<b>J</b>	330	330	430	430	530	530	630	630	730	730	830	830	930	930	1030	1030	1130	1130	1230	1230	1330	1330	1430	1430
<b>K</b>	100	200	100	200	100	200	100	200	100	200	100	200	100	200	100	200	100	200	100	200	100	200	100	200
<b>M</b>	1	1	2	2	3	3	4	4	5	5	6	6	7	7	8	8	9	9	10	10	11	11	12	12
<b>N</b>	8	8	10	10	12	12	14	14	16	16	18	18	20	20	22	22	24	24	26	26	28	28	30	30
<b>Y stroke</b>	150	250	350	450	550																			