

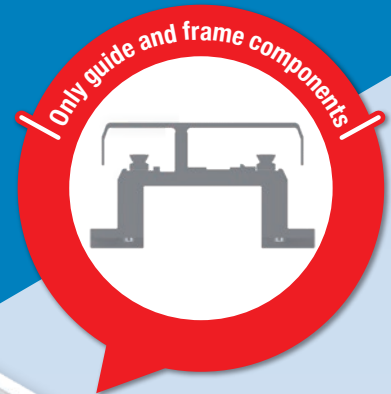
New Product



New variations added to the
linear conveyor module "LCMR200"!

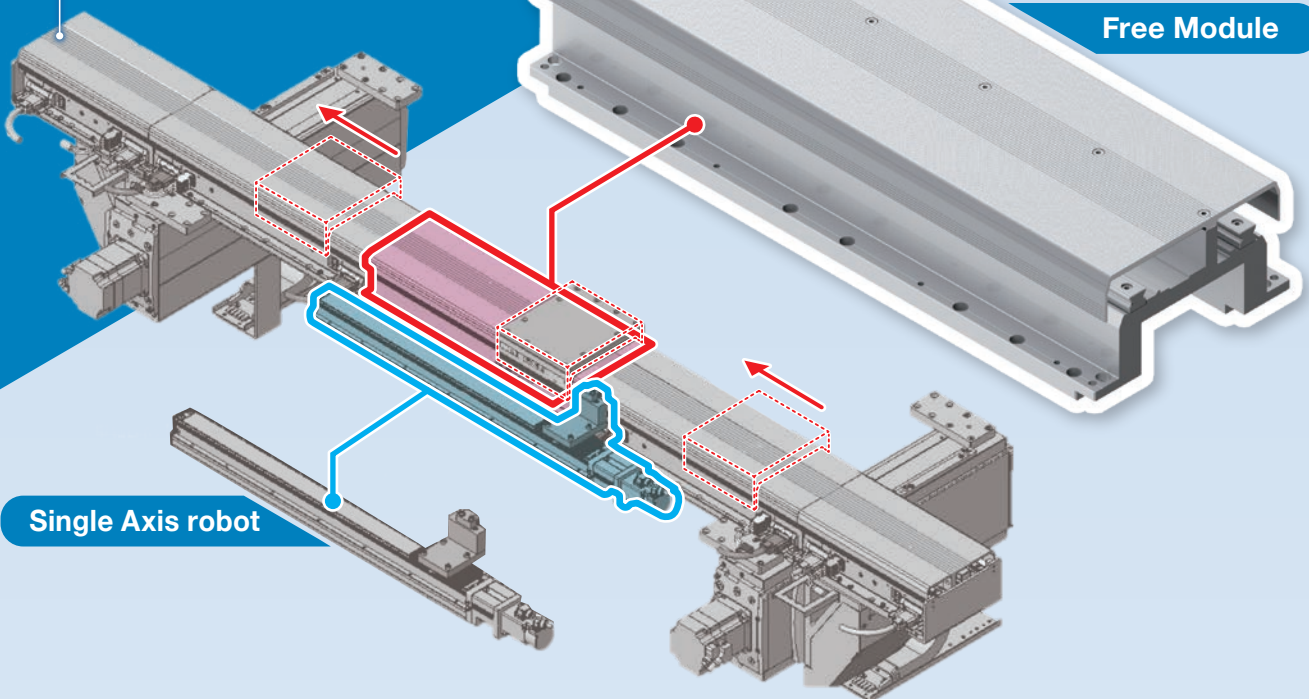
Module without a driving source

Free Module



Free Module

Example of return mechanism
using free module

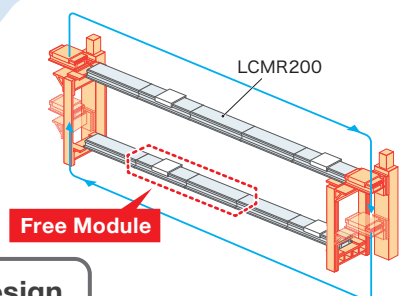


Single Axis robot

Can be used in return sections when combined with
external feed mechanisms, contributing to overall
equipment cost reduction.



Yamaha can also assist with the structural design
of the feed mechanism.



If you're unsure, please feel free to contact us!

inquiry

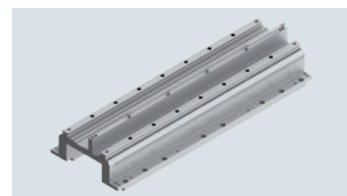
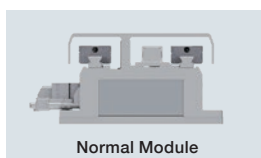


WEB <https://www2.yamaha-motor.co.jp/en/robot/inquiryen/noinqinput>

Cost reduction achieved by adding a variation without a drive source!

✓ No drive source, only guide frame

✓ Top cover can be removed



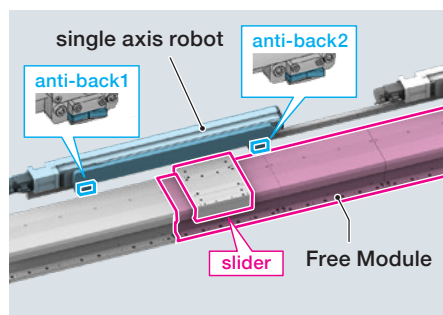
Free Module

✓ Rigidity and transfer accuracy are same as standard linear modules

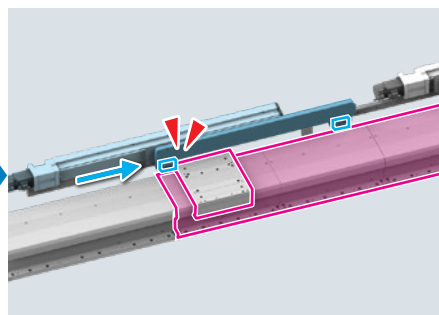
✓ Stroke variations are same as standard linear modules



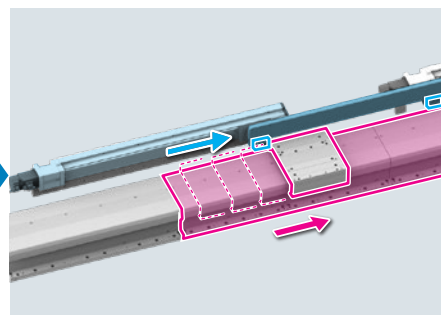
Example of a feed mechanism using a Yamaha's single axis robot



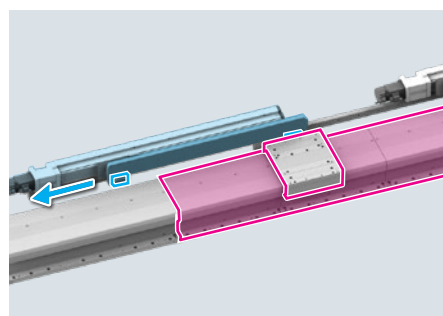
1 Slider placed on the free module.



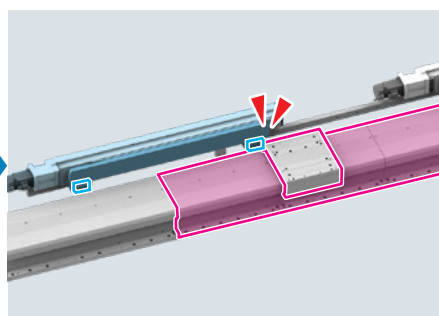
2 Using a single axis, the slider is hooked with anti-back.



3 Single-axis robot pushes the slider forward.



4 Single axis robots are back.



5 Next anti-back catches the slider.

Standard linear modules

LCMR200

Click here for a video ▶

