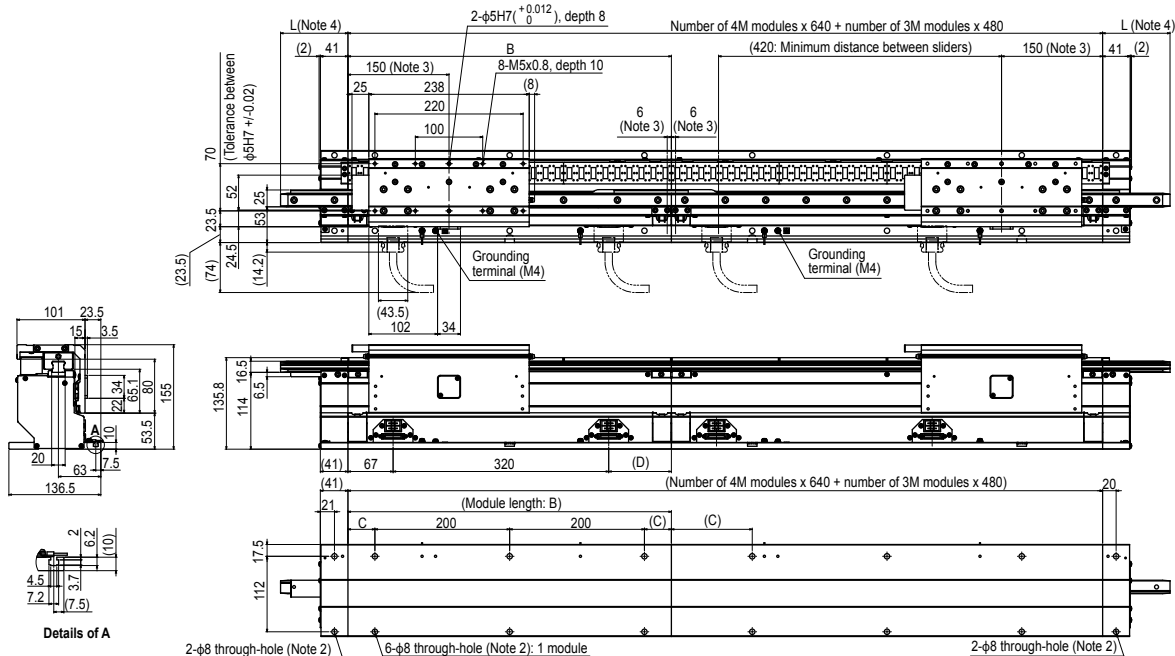


LCM100-4M/3M Linear conveyor module (640mm/480mm)



Insertion/ejection rail length selection table

Stroke variations	B	C	D
4M	640	120	253
3M	480	40	93

Insertion/ejection rail (mm)	L
	44
	100
	340

- Note 1. All sliders and modules have the same dimensions.
 Note 2. Use M6 hex socket head bolts to install the main body.
 Note 3. An area of +/-6mm from both ends of each connected module and an area of 150mm from the line end become slider stop inhibited areas. (These dimensions are obtained when the slider is located at its center position.)
 Note 4. Select an appropriate rail length of the insertion/ejection rail option from the "Insertion/ejection rail length selection table" shown on the left.
 Note 5. The LCM100 is installed only in the horizontal direction.
 Note 6. Module variations can be combined freely within the same line. (This figure shows that 3M on the left is combined with 4M on the right.)
 Note 7. It is recommended to install rail support parts on the insertion/ejection rail.
 When no support parts are installed, the rail may be deflected by the slider's own weight, leading to poor rail accuracy or short service life of the guide.
 Note. No mechanical stoppers are provided due to product characteristics. When necessary, the customer installs appropriate mechanical stoppers.