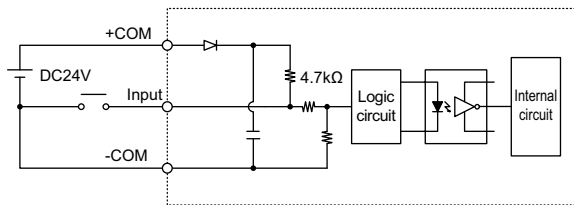


NPN type I/O circuit details

Input circuit



Type : DC input (plus common type)

Photo-coupler isolation format

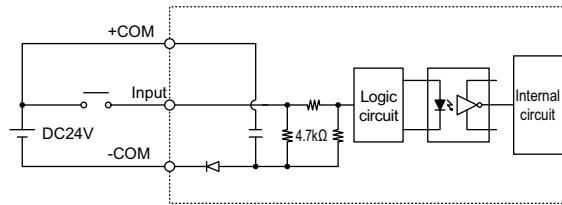
Load : 24VDC +/- 10%, 5.1mA

OFF voltage : 19.6Vmin (1.0mA)

ON voltage : 4.9Vmax (4.0mA)

PNP type I/O circuit details

Input circuit



Type : DC input (minus common type)

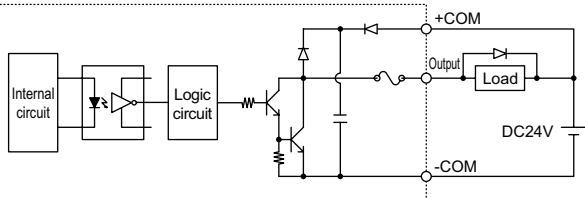
Photo-coupler isolation format

Load : 24VDC +/- 10%, 5.5mA

ON voltage : 19.6Vmin (4.5mA)

OFF voltage : 4.9Vmax (1.1mA)

Output circuit



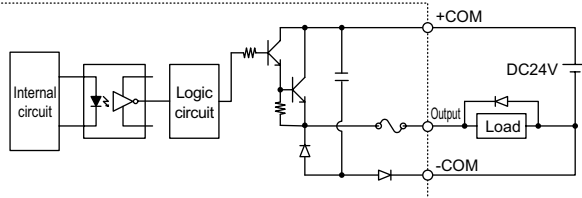
Type : NPN open collector output

(Minus common type)

Photo-coupler isolation format

Load : 24VDC, 50mA/point

Output circuit



Type : PNP open collector output

(Plus common type)

Photo-coupler isolation format

Load : 24VDC, 50mA/point