

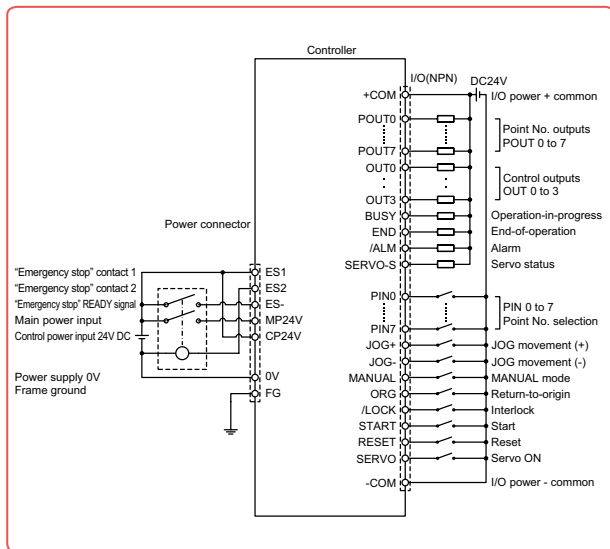
TS-S2 I/O Specifications

I/O signals (NPN / PNP)

No.	Signal Name	Description	No.	Signal Name	Description
A1	+COM	I/O power input, positive common (24VDC +/-10%)	B1	Outputs	Point No. outputs
A2			B2		
A3	No connection	B3	POUT1		
A4		B4	POUT2		
A5		B5	POUT3		
A6		B6	POUT4		
A7		B7	POUT5		
A8		B8	POUT6		
A9		B9	POUT7		
A10		B10	OUT0		
A11		B11	OUT1		
A12		B12	OUT2		
A13		B13	OUT3		
A14		JOG+	JOG movement (+ direction)	B13	BUSY
A15	JOG-	JOG movement (- direction)	B14	END	Operation-end
A16	MANUAL	MANUAL mode	B15	/ALM	Alarm
A17	ORG	Return-to-origin	B16	SRV-S	Servo status
A18	/LOCK	Interlock	B17	NC	No connection
A19	START	Start	B18	NC	
A20	RESET	Reset	B19	-COM	I/O power input, negative common (0V)
A20	SERVO	Servo ON	B20		

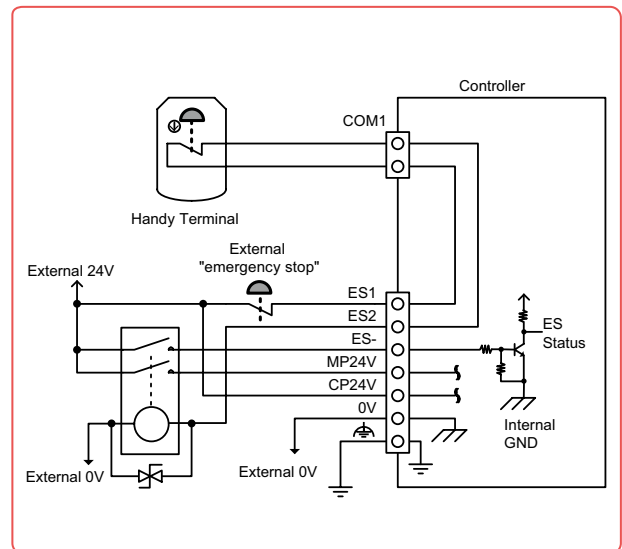
NPN type input / output wiring diagram

TS-S2



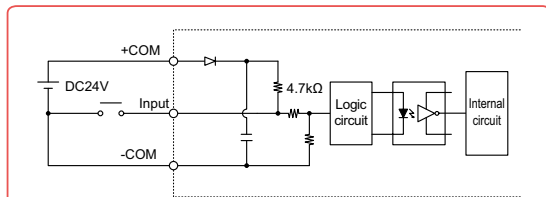
Emergency stop circuit example

TS-S2 (power connector and host unit connection example)



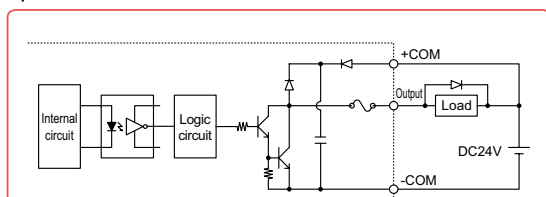
NPN type I/O circuit details

Input circuit



Type : DC input (plus common type)
 Photo-coupler isolation format
Load : 24VDC +/- 10%, 5.1mA
 OFF voltage : 19.6Vmin (1.0mA)
 ON voltage : 4.9Vmax (4.0mA)

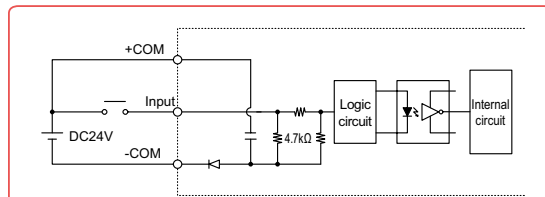
Output circuit



Type : NPN open collector output
 (Minus common type)
 Photo-coupler isolation format
Load : 24VDC, 50mA/point

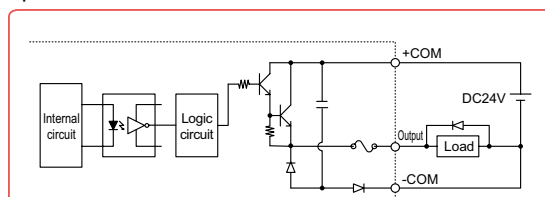
PNP type I/O circuit details

Input circuit



Type : DC input (minus common type)
 Photo-coupler isolation format
Load : 24VDC +/- 10%, 5.5mA
 ON voltage : 19.6Vmin (4.5mA)
 OFF voltage : 4.9Vmax (1.1mA)

Output circuit



Type : PNP open collector output
 (Plus common type)
 Photo-coupler isolation format
Load : 24VDC, 50mA/point