

Option details

Support software for PC

POPCOM+

POPCOM+ is an easy to operate application software that makes tasks such as robot operation, writing-editing programs, and point teaching easy to visually understand.



▼Applicable controllers

LCC140	P508
ERCD	P534
SR1-X	P540
SR1-P	

■ Features

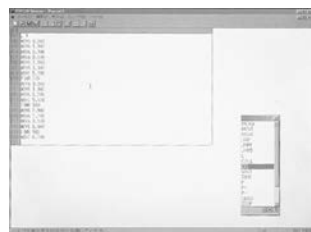
1 Easy to use

All items necessary for robot operation are displayed on single screen. There is no need to remember the menu structure so that it can be easily operated with mouse control by anybody.



2 Program editing

Edit amendment, cut, copy, paste, syntax check and program entry can be performed efficiently with function keys.



3 Point editing

Edit amendment, cut, copy, paste, syntax check, teach and trace functions are provided.



4 Help function

If you need some detailed information, robot language etc. during operation, operate [F1] key or [HELP] key to recall useful information on the screen.



5 Robot operation

By connecting between a computer and the controller with a communication cable, the controller can control the robot in the same way as a HPB / HPB-D (programming box).

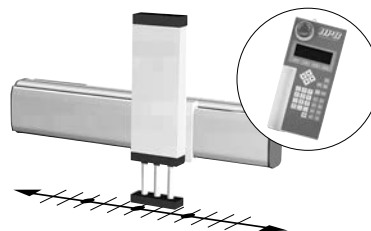


6 Creating point data

There are three methods available for creating the point data.

● MDI (Manual Data Input) teaching

The numeric keyboard is used to enter position coordinate data directly.



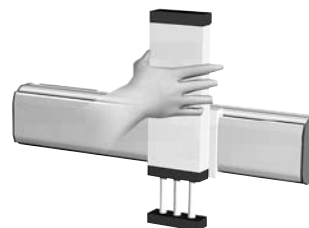
● Remote teaching

The robot arm is actually moved to the target position using the keys for point data registration.



● Direct teaching

The robot arm is manually moved to the target position with the servo motors off for point data registration.



■ PC supporting software POPCOM+



POPCOM+ software model | KBG-M4966-00

■ POPCOM+ environment

OS	Windows XP (32bit), Vista, 7, 8 / 8.1, 10 (Supported version: V.2.1.1 or later)
CPU	Processor that meets or exceeds the suggested requirements for the OS being used.
Memory	Suggested amount of memory or more for the OS being used.
Hard disk	50MB of available space required on installation drive.
Disk operation	RS-232C
Applicable controllers	SRCX to SR1, DRCX, TRCX, ERCX, ERCD, LCC140 ^{Note 1}

Note 1. LCC140 is applicable to Ver. 2.1.1 or later.

Note. Windows is the registered trademark of US Microsoft Corporation in U.S.A. and other countries.

■ Data cables (5m)

Communication cable for POPCOM+.
Select from USB cable or D-sub cable.



	USB	D-Sub
Model	USB type (5m) D-Sub type 9pin-9pin (5m)	KBG-M538F-00 KAS-M538F-10

LCC140	ERCD
SR1-X	SR1-P
RCX320	RCX221
RCX222	RCX340

Note. This USB cable supports Windows 2000/XP or later.

Note. Data cable jointly used for POPCOM+, VIP+, RCX-Studio Pro.

Note. USB driver for communication cable can also be downloaded from our website.

■ 9Pin-25Pin converter adapter

This is an adapter for converting the female D-sub25Pin to a female D-sub9Pin.
This adapter is needed if using the ERCX and DRCX.



Model | KBB-M657E-01

Note. It is unnecessary when using ERCD or SR1-X, SR1-P.

■ Controller & data cable / converter adapter matchup table

Controller	ERCD SR1-X/SR1-P LCC140 (9Pin)	ERCX DRCX (25Pin)
Data cables		
[9Pin-9Pin cable] • KAS-M538F-10 (SSC-2-5L)	Needs no converter adapter	9Pin-25Pin converter adapter KBB-M657E-01

■ Controller and data cable connection diagrams

