

# YK500XC

Clean type: Medium type



- Arm length 500mm
- Maximum payload 10kg

## Ordering method

<b>YK500XC</b>			<b>RCX340-4</b>							
<b>Model</b>	<b>Z axis stroke</b>	<b>Cable length</b>	<b>Controller / Number of controllable axes</b>	<b>Safety standard</b>	<b>Option A (OP.A)</b>	<b>Option B (OP.B)</b>	<b>Option C (OP.C)</b>	<b>Option D (OP.D)</b>	<b>Option E (OP.E)</b>	<b>Absolute battery</b>
	200: 200mm 300: 300mm	3L: 3.5m 5L: 5m 10L: 10m								

Specify various controller setting items. RCX340 ▶ **P.678**

## Basic specifications

Axis specifications	Arm length (mm)	X axis	Y axis	Z axis	R axis
	250	250	200	300	-
	Rotation angle (°)	+/-120	+/-142	-	+/-180
	AC servo motor output (W)	400	200	200	100
	Repeatability <sup>Note 1</sup> (XYZ: mm) (R: °)	+/-0.02		+/-0.01	+/-0.005
	Maximum speed (XYZ: m/sec) (R: °/sec)	4.9		1.7	876
	Maximum payload (kg)	10			
	Standard cycle time: with 2kg payload (sec)	0.53			
	R-axis tolerable moment of inertia <sup>Note 2</sup> (kgm <sup>2</sup> )	0.12			
	User wiring (sq x wires)	0.2 x 20			
	User tubing (Outer diameter)	φ6 x 3			
	Travel limit	1.Soft limit, 2.Mechanical stopper (X, Y, Z axes)			
	Robot cable length (m)	Standard: 3.5 Option: 5, 10			
	Weight (kg)	31			
	Degree of cleanliness	CLASS 10 <sup>Note 3</sup>			
	Intake air (Nl/min)	60 <sup>Note 4</sup>			

Note 1. This is the value at a constant ambient temperature. (X,Y axes)  
 Note 2. The acceleration coefficient is set automatically in accordance with the tip weight and R-axis moment of inertia settings.  
 Note 3. Per 1cf (0.1μm base), when suction blower is used.  
 Note 4. The necessary intake amount varies depending on the use conditions and environment.

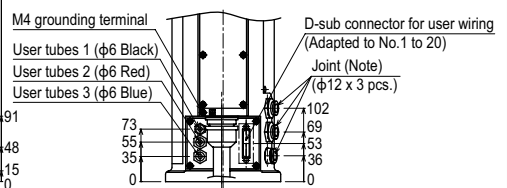
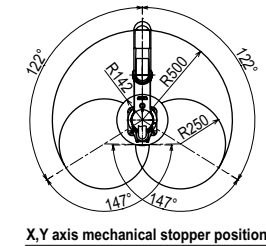
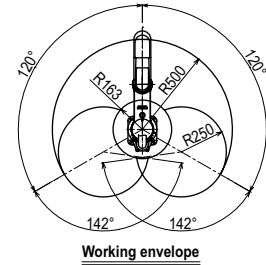
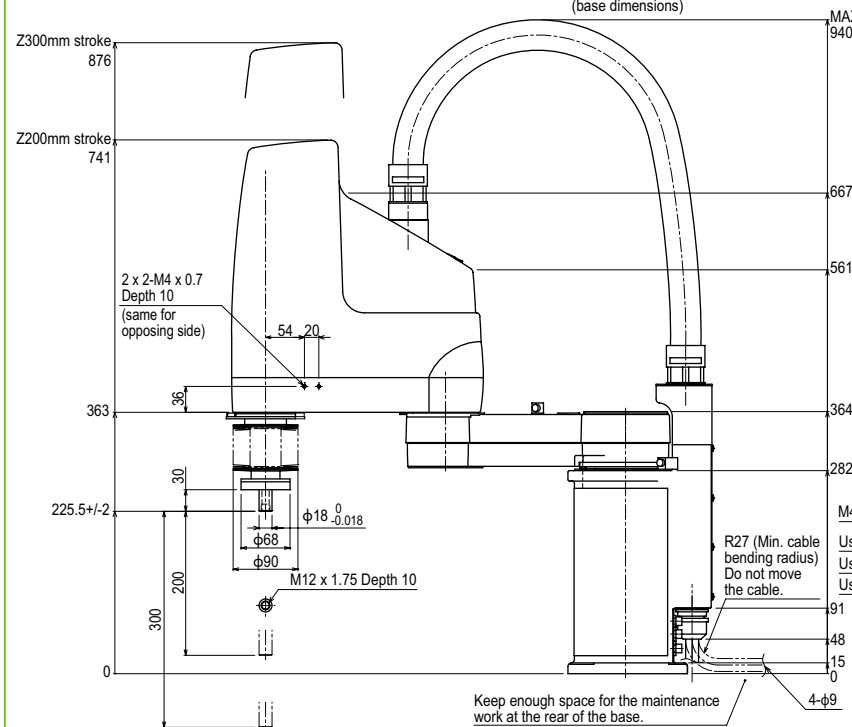
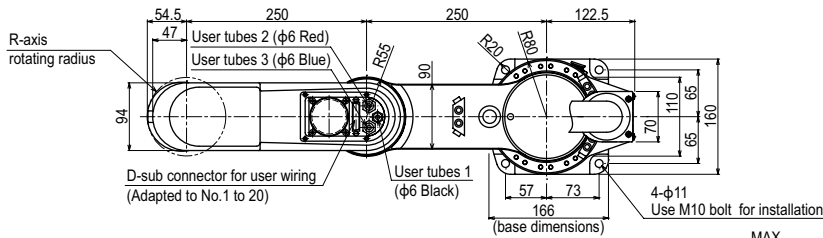
## Controller

Controller	Power capacity (VA)	Operation method
RCX340	1500	Programming / I/O point trace / Remote command / Operation using RS-232C communication

Note. The movement range can be limited by changing the positions of X and Y axis mechanical stoppers. (The movement range is set to the maximum at the time of shipment.) See our robot manuals (installation manuals) for detailed information.

Our robot manuals (installation manuals) can be downloaded from our website at the address below:  
<https://global.yamaha-motor.com/business/robot/>

## YK500XC



Note: For details about tubing work, refer to the User's Manual.