

# Chantey

NEWSLETTER FOR YAMAHA MARINE DEALERS

September 2017

No.165

English Version



## CONTENTS

P1: WaveRunner Models for 2018

P2: One-point Service Advice: How to Properly Charge a Battery

P3: 2017 WaveRunner Test-Ride Events

P4: Kurt Goes Fishing Down Under: A Popular as Well as Delicious Sport Fishing Target  
News Round-up: The 35<sup>th</sup> America's Cup in Bermuda and more

YAMAHA MOTOR CO., LTD., Marine Business Operations, 2500 Shingai, Iwata, Shizuoka 438-8501, Japan

## WaveRunner Models for 2018

In 2017, Yamaha introduced several high-performance and entry-level models to its lineup. For 2018, the entire lineup has gained new standout graphic and color combinations while the performance-focused GP1800 and VXR models have been given small refinements to up their product competitiveness.

### New Features on the GP1800

The class-leading GP1800 model sports Yamaha's supercharged 1,812cc engine, proprietary RiDE (Reverse with Intuitive Deceleration Electronics) deceleration and reverse control system and an ultralightweight NanoXcel2 hull for the ultimate in performance, but gains a new, grippier seat material to help hold the rider's legs for greater confidence in aggressive riding.

### New Features on the VXR

The VXR is an appealing choice for both beginners and PWC veterans with its agile handling, excellent acceleration and top speed, and receives Yamaha's first-ever matte finish for a WaveRunner PWC.

### 2018 WaveRunner Models



# How to Properly Charge a Battery

The life of a battery depends a lot on how you use it. To make sure you get the longest life out of the battery as possible, there may be times when you need to charge it. In this issue, we will explain how to properly charge a battery.

\*There are various types of batteries on the market, so be sure to read and follow the instructions in the Owner's Manual for the battery you are charging. This explanation uses a 12V 19Ah (10 hour) battery.

## Disconnect the Battery

Always disconnect the battery from the engine before charging it, disconnecting the cable for the negative terminal first and then the positive terminal. When connecting it back to the engine after charging, always connect it in the opposite order, starting with the positive terminal and then connecting the negative terminal.

## Check the Battery Water Level

Find the upper and lower water level markers on the battery. If the water level you see is somewhere between the upper and lower marks, the battery is in its normal working condition. However, battery water levels gradually decrease with use due to evaporation in hot use conditions and the process of electrolysis, so when the water falls below the lower mark, you need to add more.

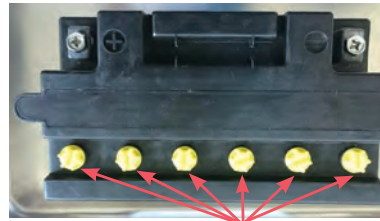


## Adding Water

A typical 12V battery has six cells. Each cell is in a different compartment, so each one must be checked and the water level adjusted as necessary.

Before removing the caps, put on eye protection and rubber gloves. Use a flat-blade screwdriver or a coin to slot into the grooves and loosen the caps easily.

\*Never touch the liquid inside the battery. Because it is an electrolyte solution made up of sulfuric acid and water, it can eat into clothing or your skin, so take care not to touch it. If you get any on your skin or in your eyes, flush the area immediately with water and seek medical attention.



Each of the six cells is in its own separate compartment.



Loosening with a screwdriver

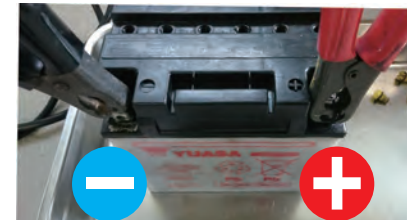


Loosening with a coin

Only use purified (distilled) water for adding water to the battery. Do not use tap water because it contains impurities that may cause deterioration of battery performance. Add water so that all six cells have an equal amount and the upper level mark is reached.

## Charging the Battery

Because hydrogen gas can be produced when a battery is charging, remove all of the vent caps and conduct the charging in a well-ventilated room to prevent gas build-up. In general, charging is done at an amperage of one-tenth the battery's capacity or lower. In this case, since we are using a 19Ah battery, it is charged with a current of 1.9 amps ( $19\text{Ah} \times 1/10 = 1.9\text{A}$ ) or lower. Make sure to check the amperage of the charger you use. Depending on the charger, the amperage may be listed as "amp output" or "amp rating." Taking more time to charge the battery at lower amperage will help increase the life of the battery.



### Starting to Charge

1. Check the battery's specifications and select the appropriate charger.
2. Connect the charger to the positive terminal first and then the negative terminal.
3. Turn on the charger.

### Charge is Complete

1. Turn off the charger.
2. Disconnect the clips first from the negative terminal and then from the positive terminal.

### Caution

- When the charger is on, never let the positive and negative clips touch each other, and never connect the clips to the wrong terminals.
- When using a charger that doesn't automatically switch from charging mode to maintenance mode, be wary of elapsed time to prevent overcharging the battery.



# 2017 WaveRunner Test-Ride Events

## Market Reports of WaveRunner Demo Rides

Test-ride events with 2017 WaveRunner models were held in the early summer of this year in locations throughout the UAE, Turkey and Bahrain for PWC rental operators and general customers. The participants were positive in their evaluations of the models and the events gave business owners added confidence for this summer's sales.



Bahrain



Turkey



Bahrain



Turkey



Bahrain



UAE

### UAE

Distributor: Al Yousuf Motors LLC  
Models tested: 2017 GP1800, EX Sport

### Turkey

Distributor: Burla Machinery Trade and Investment Company  
Models tested: 2017 GP1800, EX Series

### Bahrain

Distributor: AJM Kooheji Group B.S.C. (c)  
Model tested: 2017 EX Sport

Love the GP1800 for its speed, light weight, stability and greater control, especially when cornering.

We're happy with the performance of both models.

Really like the new hull design.

The colors look great, engine power is good and the light weight makes it easy to control.

It's great at around 5,000 to 5,300 rpm.

The engine is very good and the body design is better than the competition.







## Kurt Goes Fishing Down Under

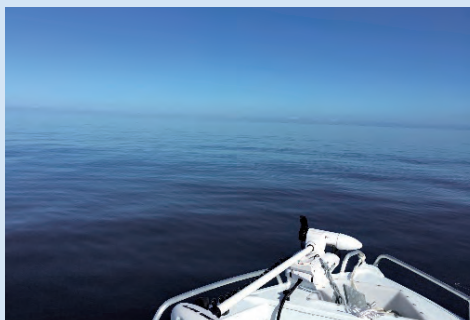


Australia Entry #3

### A Popular as Well as Delicious Sport Fishing Target

If I someday managed to get my own boat, there was one kind of fishing I'd always wanted to try. It was to chase after a school of tuna and fish for them by casting with a lure. Though small, I have my own boat now so I decided to give it a shot early on.

Here in Queensland, Australia where I live, there are lots of large bays surrounded by chains of sand islands. The ocean swells don't enter these bays, so on days when the wind is calm, you can go after big pelagic fish even



with a relatively small boat. My target this time was longtail tuna. It's one of the smaller species of tuna and usually grows to a size no larger than 30 kg. The ones most often caught range from 5 to 10 kg—a size certainly big enough when fishing from a small boat like mine—and they are a popular target that's delicious to eat as well.

Tuna fishing begins by taking your boat out into a large bay and looking for flocks of birds flying over the water. Since there are also schools of mack tuna, spotted mackerel and other fish in these bays, there will inevitably be lots of birds flocking over the water when the conditions are favorable, so you have to be able to distinguish which of the flocks are gathered over schools of tuna. The trick is to look at the speed that the flocks of birds are moving across the water. Tuna are fast swimmers, so when you see a fast-moving flock of birds there is a good chance that there will be a school of tuna under them. On some days, you may run over 100 km in search of a school of tuna. At times like these, a fuel-efficient Yamaha 4-stroke model gives you a big advantage.

On this day, the calm winds made conditions great for tuna fishing. I quickly chose a fast-moving flock of birds, and as I approached I saw tuna breaking the surface as they chased to catch the small fish they were feeding on. This is the most exciting moment with this kind of fishing! I made an accurate cast of my lure so that it landed in front of where the tuna school was heading. I soon got a tremendous strike and a tough fight ensued. I managed to land an average-sized longtail of about 8 kg and also caught many mack tuna and spotted mackerel. I brought a very enjoyable day to an end that evening with a sushi and sashimi party.

## News Round-up

Activities from distributors around the world, and more

### The 35<sup>th</sup> America's Cup in Bermuda

From May 26 to June 17, 2017, the final round of the 35<sup>th</sup> America's Cup—an international yacht racing competition to decide the world's best—was held in the Atlantic island nation of Bermuda. Beginning in 1851, the America's Cup is known as one of the modern world's oldest and longest-running competitions, predating football's World Cup by 79 years and the modern Olympic Games by 45 years. Participating in the final rounds of the competition were club teams from six countries: the United States, Great Britain, New Zealand, Sweden, France and Japan.

As an official partner of SoftBank Team Japan, Yamaha Motor not only manufactured a section of the AC50 competition boat's hull but also supported the team's operations by supplying Yamaha products



like the outboard motors used by the support boat, a re-locatable pier and golf cars essential for the team's base camp operations, and scooters for the team members to get around the island.

Direct assistance for SoftBank Team Japan in Bermuda was also provided by local Yamaha distributor, A&P Marine Limited Bermuda. Since the launch of SoftBank Team Japan back in 2015, A&P Marine has been doing maintenance for the team's boats and outboard motors. As the official Yamaha marine distributor in Bermuda, A&P Marine also provided the same service for the Yamaha outboard motors used by the other teams competing. As the entire island of Bermuda began to show heightened excitement in anticipation of the America's Cup right from 2015, A&P Marine remained incredibly busy servicing the engines used by the various teams as well as attending to general customers buying new engines for boats to watch the competition out on the water. Their diligent service efforts greatly contributed to the consistent high quality demonstrated by Yamaha outboards in use. As a result, boat owners from around the world at the venue saw an impressive display of marinas lined with Yamaha-powered boats.

Thanks to A&P Marine's outstanding technical knowledge and skill, SoftBank Team Japan was able to fully concentrate on the competition and progress to the semifinals without any worries about engine trouble. All in all, the America's Cup was a high-profile opportunity to advertise to customers around the world the high quality of Yamaha outboards and the excellent service provided by Yamaha's worldwide network.

*From Kazunori Nakamura, Overseas Market Development Operation Business Unit (OMDO)*



# News Round-up

Activities from distributors around the world, and more

## WaveRunner YRA Area Instructor Course in the UAE

Al Yousuf Motors LLC, Yamaha Motor's distributor in the Middle Eastern country of the United Arab Emirates (UAE), held a WaveRunner YRA Area Instructor Course with YMC's instructor team in Dubai on July 19, 2017.

Receiving the instructor training were experienced staff from Al Yousuf Motors' marine products department. The training was aimed at qualifying the participants themselves to be able to give practical and effective WaveRunner training instruction to general users, rental operators and government service personnel.

Three of the distributor's staff participated in classroom study and hands-on training as candidates for becoming certified instructors. They received instruction in the areas of proper wear for riding, on-the-water rules and etiquette, proper and safe use of PWCs, knowledge of the unique performance characteristics of PWCs, the process for conducting pre-ride checks and more. The on-the-water training included PWC operation aimed at experiencing

firsthand the performance unique to PWCs, how to judge stopping distance and how to right a capsized craft.

From this course, all three of Al Yousuf Motors' participants were newly certified as area instructors. They will surely play an important role in the UAE towards raising awareness of safety on the water, creating even more new demand and promoting sound market growth.

*From Al Yousuf Motors LLC*



## Fishing Camp Clinic in Canada

From the spring and into summer in Canada, there are numerous "Fishing Camps" run that are popular with angling enthusiasts where they spend several days fishing on lakes and rivers in the great outdoors set against beautiful natural surroundings. From June to July, Yamaha Motor Canada Limited (YMCA) joined with its local dealers and a team from YMC

to hold Fishing Camp Clinics at locations around the country to give the outboards of fishing camp fleets thorough pre-season inspections and maintenance. This program has been conducted since 1989 with the aims of preventing machine trouble, boosting customer satisfaction and promoting regular trade-in sales of outboards for fishing camp fleets.



The YMC team usually participated in the clinics held in northwestern areas of Ontario, but this year the team also joined in clinics held in the midwestern province of Saskatchewan.

With this year's fishing camp clinics, Yamaha held promotions for the new F25 outboard model in addition to the usual engine inspections. Through on-the-water test rides with the new model, the camp operators experienced its benefits firsthand, with many praising the engine's light weight, feeling of acceleration and top speed in particular. The valuable feedback from this initiative gave the Yamaha teams additional confidence for expanding sales of the new model.

*From Yukiya Akahori, 1<sup>st</sup> Marketing Division, Marine Business Operations, YMC*

### Editor's Note



Hello, everyone! I'm your new *Chantey* editor, David Fukushima! I'd like to thank our previous editor, Shimizu-san, for his efforts to provide readers with great news and articles. It's an honor to be part of this newsletter and I'm looking forward to contributing to your business and boating life! Cheers!

**YAMAHA OUTBOARDS WEBSITE** → <https://global.yamaha-motor.com/business/outboards/index.html>

**WAVERUNNER WEBSITE** → <https://global.yamaha-motor.com/business/waverunner/>

**Yamaha Outboards Channel on YouTube**

**View waterside scenes and scenes of Yamaha outboards in use around the world**

**Yamaha Outboards Channel** → <https://www.youtube.com/user/Yamahaoutboardmotors>