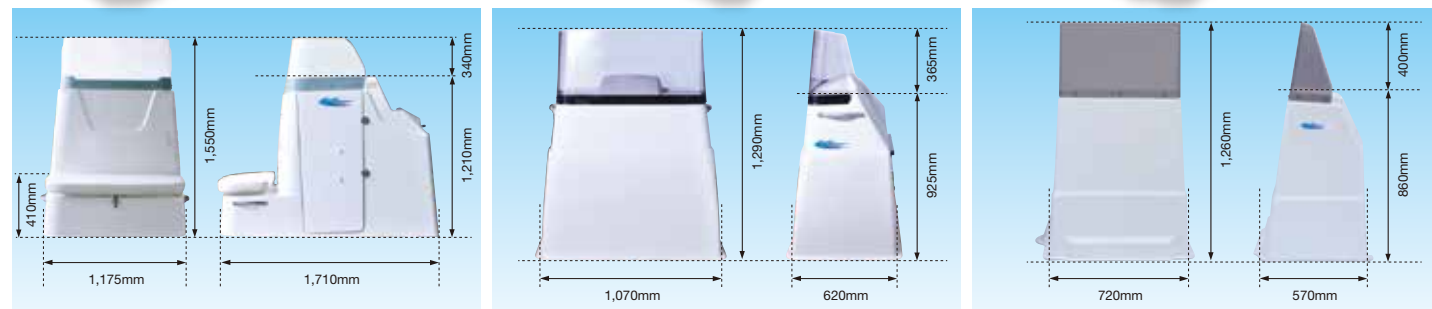


OPTIONAL EQUIPMENT (STEERING CONSOLE BOX)



\*Recommended for Remote Control application.

\*Steering wheel, meters, remote control box and switch panel are not included.

\*Installation cost of the console box will be charged separately.

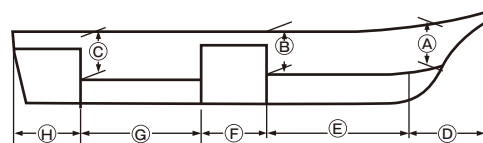
SPECIFICATIONS

	W-14CH	W-16EH-1	W-17AH	W-18EF	W-19FH	W-20CF-5	W-20PH	W-23CF	W-23PH	W-25CF	W-25DH	W-27HF	W-30DF	W-32AF	W-35CF	W-38CF-3	W-43AF
FLOOR	●	●	●	●	●	●	●	●	●	●	●	●	●	●	●	●	●
BOW HATCH	1	1	1	1	1	1	1	1	1	1	1	1	1	1	1	1	1
STERN HATCH	2	2	2	2	2	2	3	2	2	2	3	3	3	3	3	3	5
FISH HOLD	1	1	2		2	2	1		1		2						
HATCH FOR STORAGE							1		2								
BOW EYE	1	1		1	1	1		1		1			1	1	1	1	1
BOW CLEAT							1					1					
MOORING BAR			1						1		1						
STERN EYE	1	2	2	2	2	2	2	2	2	2	2	2	2	2	2	2	2
HULL SCUPPER	2	2	4	2	2	4	2	2	4	4	4	4	4	4	4	4	6
SCUPPER FOR FISH HOLD	2	2	2		2	2	2		2		4						
DRAIN PLUG FOR TRANSOM	2	2	2	2	2	2		2		2	3			3	3	3	2
HAND RAIL	1	1	1	1	1	1	1	1	1	1	1	1	1				
BATTERY BELT							1	1	1	1	1	1	1	2	2	2	3
BATTERY CAP							1	1	1	1	1	1	1	2	2	2	3
TRANSOM PAD	●	●	●		●	●											

●: STANDARD EQUIPMENT FIGURES: NUMBER OF ITEMS

DIMENSIONS

	W-14CH	W-16EH-1	W-17AH	W-18EF	W-19FH	W-20CF-5	W-20PH	W-23CF	W-23PH	W-25CF	W-25DH	W-27HF	W-30DF	W-32AF	W-35CF	W-38CF-3	W-43AF
A (mm)	380	390	350	530	390	380	400	490	420	410	460	410	500	490	590	650	760
B (mm)	370	330	350	460	330	330	400	430	400	420	380	410	420	410	510	540	530
C (mm)	350	320	380	460	330	330	400	400	400	450	460	520	510	490	590	600	680
D (mm)	820	1,030	1,020	970	770	1,260	1,300	1,100	1,380	1,070	1,420	1,530	1,270	1,270	1,470	1,580	1,820
E (mm)	1,070	1,080	1,540	↑	1,720	1,870	1,620	↑	2,530	↑	3,020	↑	↑	↑	↑	6,080	↑
F (mm)	670	1,020	700	3,610	1,320	660	1,020	5,220	660	5,620	650	5,350	6,560	7,060	7,780	1,680	9,660
G (mm)	910	900	1,010	↓	880	1,500	1,190	↓	1,430	↓	1,220	↓	↓	↓	↓	540	↓
H (mm)	710	770	870	830	770	850	1,010	800	1,030	920	1,110	1,120	1,120	1,100	1,190	1,400	1,700



- Product improvements may cause changes in specification without notice.
- Limitations in photography and printing may cause product color to appear slightly different from the actual product.
- Some photos include optional equipment.
- Please read the instruction manual thoroughly before attempting to operate your new Yamaha outboard.

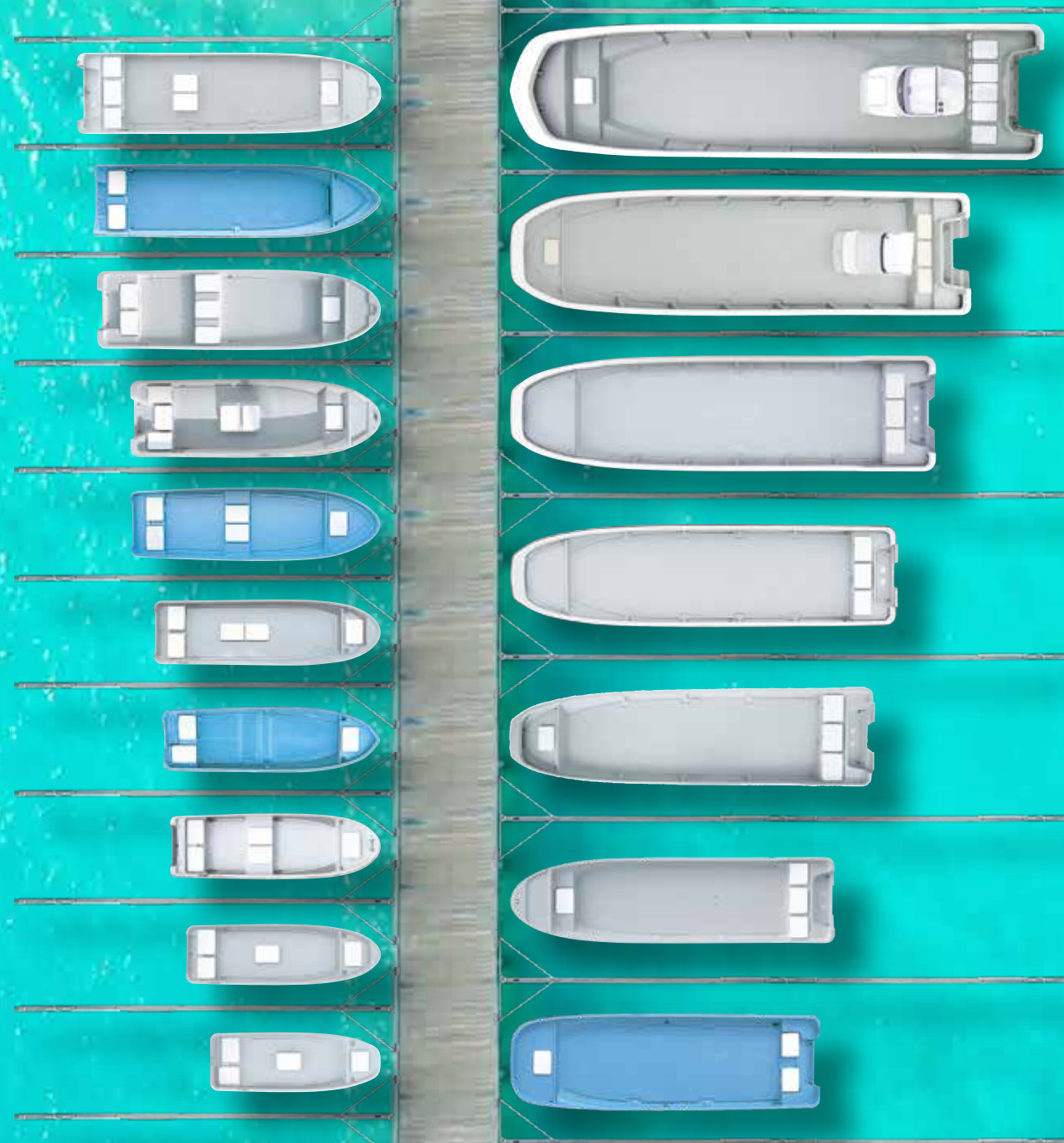


YAMAHA MOTOR CO.,LTD.  
Overseas Market Development Operation Business Unit  
2500 SHINGAI IWATA SHIZUOKA JAPAN



# YAMAHA FRP BOATS UTILITY SERIES

Vary widely depends on the intended usage





# YAMAHA FRP BOATS UTILITY SERIES

All these are made in Japan.



LoA (m)	4.22	CAPACITY (person)	3
BoA (m)	1.51	TRANSOM HEIGHT	L
DoA (m)	0.63	MAX HP (manual)	15
HULL WEIGHT (kg)	214	MAX HP (remote control)	-
LOADING CAPACITY (kg)	400		



LoA (m)	5.61	CAPACITY (person)	5
BoA (m)	1.68	TRANSOM HEIGHT	L
DoA (m)	0.66	MAX HP (manual)	30
HULL WEIGHT (kg)	336	MAX HP (remote control)	-
LOADING CAPACITY (kg)	514		



LoA (m)	7.02	CAPACITY (person)	8
BoA (m)	2.00	TRANSOM HEIGHT	L
DoA (m)	0.78	MAX HP (manual)	60
HULL WEIGHT (kg)	551	MAX HP (remote control)	-
LOADING CAPACITY (kg)	1,019		



LoA (m)	9.05	CAPACITY (person)	12
BoA (m)	2.35	TRANSOM HEIGHT	X
DoA (m)	0.86	MAX HP (manual)	70
HULL WEIGHT (kg)	905	MAX HP (remote control)	175
LOADING CAPACITY (kg)	1,875		



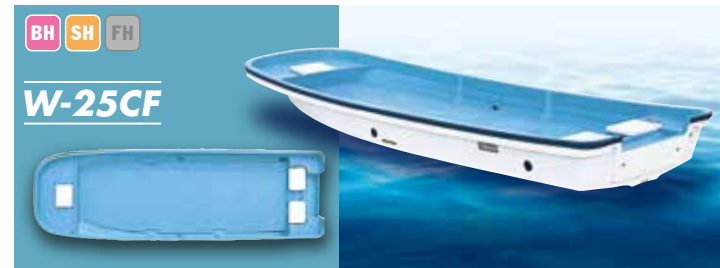
LoA (m)	13.18	CAPACITY (person)	50
BoA (m)	3.20	TRANSOM HEIGHT	X
DoA (m)	1.16	MAX HP (manual)	-
HULL WEIGHT (kg)	3,021	MAX HP (remote control)	225x2
LOADING CAPACITY (kg)	5,161	Console&Steering:Option	



LoA (m)	4.82	CAPACITY (person)	4
BoA (m)	1.52	TRANSOM HEIGHT	L
DoA (m)	0.65	MAX HP (manual)	20
HULL WEIGHT (kg)	231	MAX HP (remote control)	-
LOADING CAPACITY (kg)	500		



LoA (m)	6.20	CAPACITY (person)	6
BoA (m)	1.82	TRANSOM HEIGHT	L
DoA (m)	0.66	MAX HP (manual)	40
HULL WEIGHT (kg)	346	MAX HP (remote control)	-
LOADING CAPACITY (kg)	854		



LoA (m)	7.67	CAPACITY (person)	10
BoA (m)	2.50	TRANSOM HEIGHT	L
DoA (m)	0.85	MAX HP (manual)	75
HULL WEIGHT (kg)	714	MAX HP (remote control)	115
LOADING CAPACITY (kg)	1,686		



LoA (m)	9.61	CAPACITY (person)	15
BoA (m)	2.55	TRANSOM HEIGHT	X
DoA (m)	0.87	MAX HP (manual)	90
HULL WEIGHT (kg)	1,050	MAX HP (remote control)	180
LOADING CAPACITY (kg)	2,340		



LoA (m)	5.20	CAPACITY (person)	4
BoA (m)	1.64	TRANSOM HEIGHT	L
DoA (m)	0.65	MAX HP (manual)	30
HULL WEIGHT (kg)	290	MAX HP (remote control)	40
LOADING CAPACITY (kg)	540		



LoA (m)	6.20	CAPACITY (person)	6
BoA (m)	1.95	TRANSOM HEIGHT	L
DoA (m)	0.74	MAX HP (manual)	50
HULL WEIGHT (kg)	474	MAX HP (remote control)	-
LOADING CAPACITY (kg)	818		



LoA (m)	7.51	CAPACITY (person)	8
BoA (m)	2.05	TRANSOM HEIGHT	L
DoA (m)	0.80	MAX HP (manual)	60
HULL WEIGHT (kg)	610	MAX HP (remote control)	100
LOADING CAPACITY (kg)	1,190		



LoA (m)	10.55	CAPACITY (person)	17
BoA (m)	2.81	TRANSOM HEIGHT	X
DoA (m)	1.06	MAX HP (manual)	100
HULL WEIGHT (kg)	1,650	MAX HP (remote control)	300
LOADING CAPACITY (kg)	3,276		



LoA (m)	5.42	CAPACITY (person)	5
BoA (m)	1.70	TRANSOM HEIGHT	L
DoA (m)	0.72	MAX HP (manual)	25
HULL WEIGHT (kg)	280	MAX HP (remote control)	-
LOADING CAPACITY (kg)	460		



LoA (m)	7.12	CAPACITY (person)	6
BoA (m)	1.80	TRANSOM HEIGHT	L
DoA (m)	0.70	MAX HP (manual)	40
HULL WEIGHT (kg)	437	MAX HP (remote control)	-
LOADING CAPACITY (kg)	1,000		



LoA (m)	8.04	CAPACITY (person)	11
BoA (m)	2.24	TRANSOM HEIGHT	X
DoA (m)	0.85	MAX HP (manual)	60
HULL WEIGHT (kg)	750	MAX HP (remote control)	100
LOADING CAPACITY (kg)	1,450		



LoA (m)	11.40	CAPACITY (person)	38
BoA (m)	3.11	TRANSOM HEIGHT	U/X
DoA (m)	1.10	MAX HP (manual)	-
HULL WEIGHT (kg)	2,165	MAX HP (remote control)	U:300 X:150x2
LOADING CAPACITY (kg)	4,217	Console&Steering:Option	

● STANDARD EQUIPMENT

- BH BOW HATCH
- SH STERN HATCH
- FH FISH HOLD

