

CELL HANDLER™ 2

Pursuing Progress. Together.

What is the CELL HANDLER™ ?

The CELL HANDLER™ is the automated picking and imaging system that allows high-throughput cell handling. Its image-based cell analysis functionality makes it easy to screen and select your cells of interest. Using Yamaha's proprietary Precision Tip™, the CELL HANDLER™ achieves gentle picking and transfer of the most delicate 3D cells.



Workflow

Simple and flexible 3-step process supports new discoveries.

STEP 1

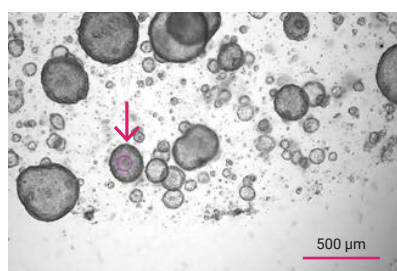
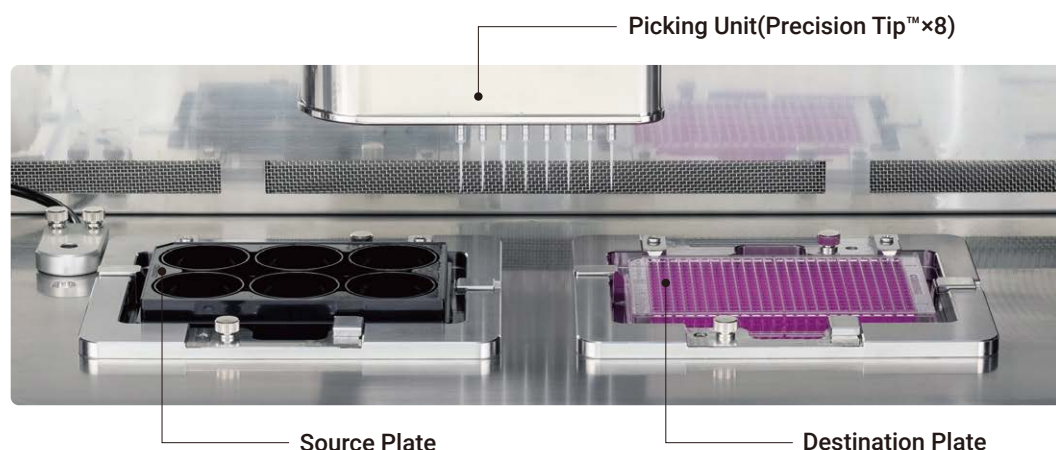
Imaging

STEP 2

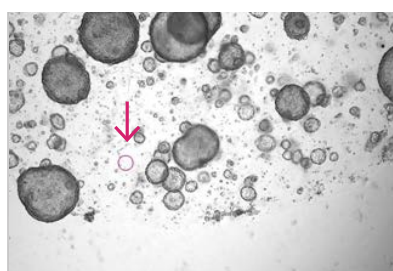
Cell Analysis

STEP 3

Cell Picking & Dispensing



Before Picking



After Picking



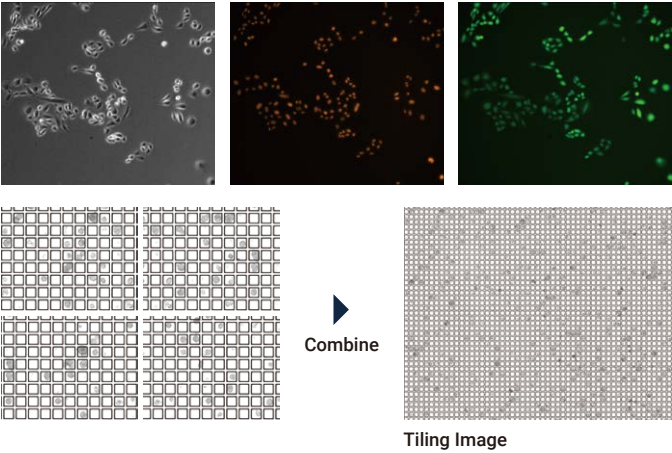
After dispensing

Features

Imaging

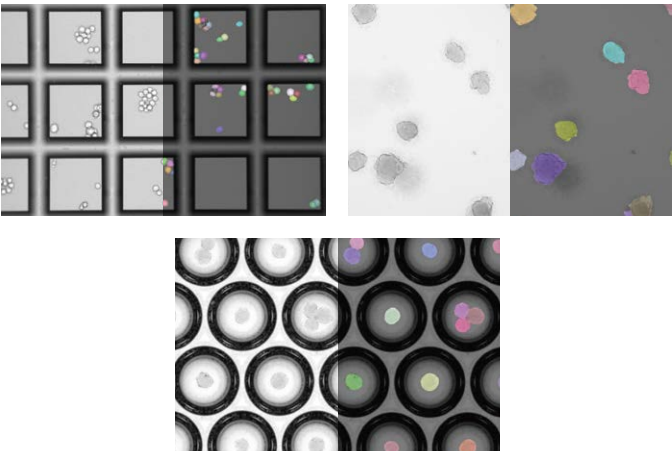
Equipped with 4x, 10x, and 20x bright field observation, 4x and 10x phase contrast observation, and up to 5 fluorescence filters.

The microscope-like usability gives you stress-free acquisition of the data you want.



Cell Analysis

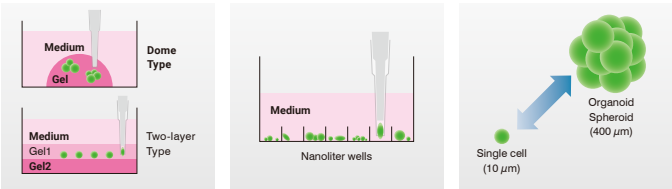
The quantified sample data and coordinate data are saved automatically, making the process traceable. The new AI-supported cell recognition helps improve the recognition rate of hard-to-identify target samples.



Cell Picking & Dispensing

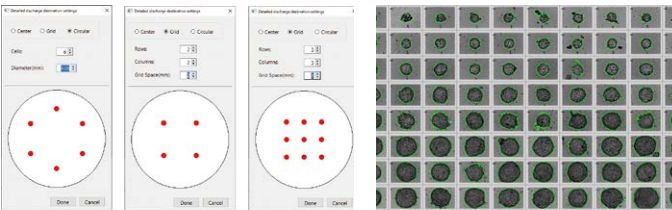
Cell Picking

The head unit combined with the Precision Tip™ gives you the power to select and pick a wide range of samples - from single cells to 3D cells - from liquid or semi-solid culture media.



Cell Dispensing

Controlling the dispensing volume and speed of the tip head allows you to place samples exactly where you want them with minimal damage. The cell dispensing layout gives you flexibility in target positions and cell numbers in the destination well.



Specifications

Dimensions	W 1350 x D 900 x H 1600 mm
Weight	Approx. 550kg
Camera	CMOS 2048 x 1544 pixels
Optical lenses	Bright field observation: 4x, 10x, 20x Phase contrast: 4x, 10x
Air cleaning unit	HEPA filters x 2
Fluorescence system	LED light source for fluorescence observation 3 to 5-color fluorescent filters



Yamaha Motor Co., Ltd.

<https://global.yamaha-motor.com/business/hc/>
ych@yamaha-motor.co.jp

* For research use only. Not for use in diagnostic or therapeutic procedures.
* The specifications are subject to change without notice.
* The above are the results of experiments in our laboratory. The results may vary depending on the work environment, cell type and so on.

