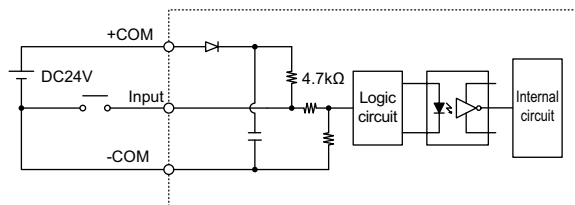


## NPN type I/O circuit details

### Input circuit



**Type : DC input (plus common type)**

Photo-coupler isolation format

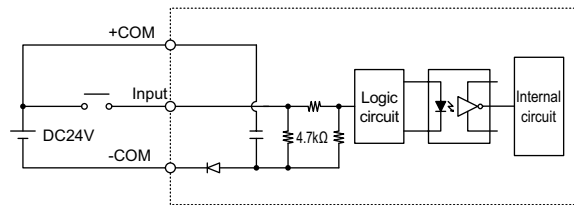
**Load : 24VDC +/- 10%, 5.1mA**

OFF voltage : 19.6Vmin (1.0mA)

ON voltage : 4.9Vmax (4.0mA)

## PNP type I/O circuit details

### Input circuit



**Type : DC input (minus common type)**

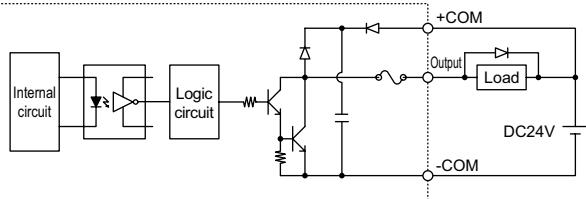
Photo-coupler isolation format

**Load : 24VDC +/- 10%, 5.5mA**

ON voltage : 19.6Vmin (4.5mA)

OFF voltage : 4.9Vmax (1.1mA)

### Output circuit



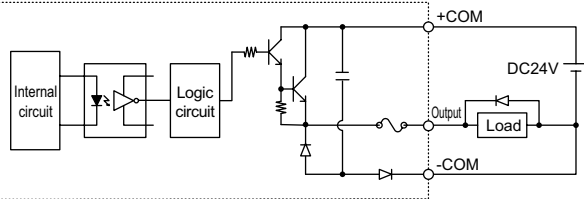
**Type : NPN open collector output**

(Minus common type)

Photo-coupler isolation format

**Load : 24VDC, 50mA/point**

### Output circuit



**Type : PNP open collector output**

(Plus common type)

Photo-coupler isolation format

**Load : 24VDC, 50mA/point**