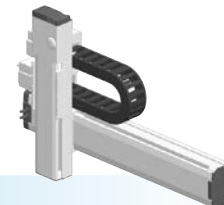


# SXYx

## 2 axes / ZFL20

● XZ type    ● Cable carrier    ● Z-axis: clamped base / moving table type (200W)



### Ordering method

Model	Cable	Combination	X-axis stroke	ZR-axis	Z-axis stroke	Cable	Controller / Number of controllable axes	Safety standard	Regenerative unit <sup>Note 1</sup>	Option A (OP.A)	Option B (OP.B)	Vision System	Absolute battery
SXYx - C			ZFL20				RCX320-2		R				
	F1 F3		15 to 105cm		15 to 35cm	3L: 3.5m 5L: 5m 10L: 10m							

Specify various controller setting items. RCX320 ▶ **P.626**

Note 1. RCX320 uses the YHX-RU regenerative unit. The RCX222 uses the RG2.

### Specification

	X-axis	Z-axis
Axis construction <sup>Note 1</sup>	F14	F10H-BK
AC servo motor output (W)	100	200
Repeatability <sup>Note 2</sup> (mm)	+/-0.01	+/-0.01
Drive system	Ball screw $\phi 15$	Ball screw $\phi 15$
Ball screw lead <sup>Note 3</sup> (Deceleration ratio) (mm)	20	20
Maximum speed <sup>Note 4</sup> (mm/sec)	1200	1200
Moving range (mm)	150 to 1050	150 to 350
Robot cable length (m)	Standard: 3.5    Option: 5, 10	

Note 1. Use caution that the flame machining (installation holes, tap holes) differs from single-axis robots'.

Note 2. Positioning repeatability in one direction.

Note 3. Leads not listed in the catalog are also available. Contact us for details.

Note 4. When the X-axis stroke is longer than 750mm, resonance of the ball screw may occur depending on the operation conditions (critical speed). In this case, reduce the speed setting on the program by referring to the maximum speeds shown in the table below.

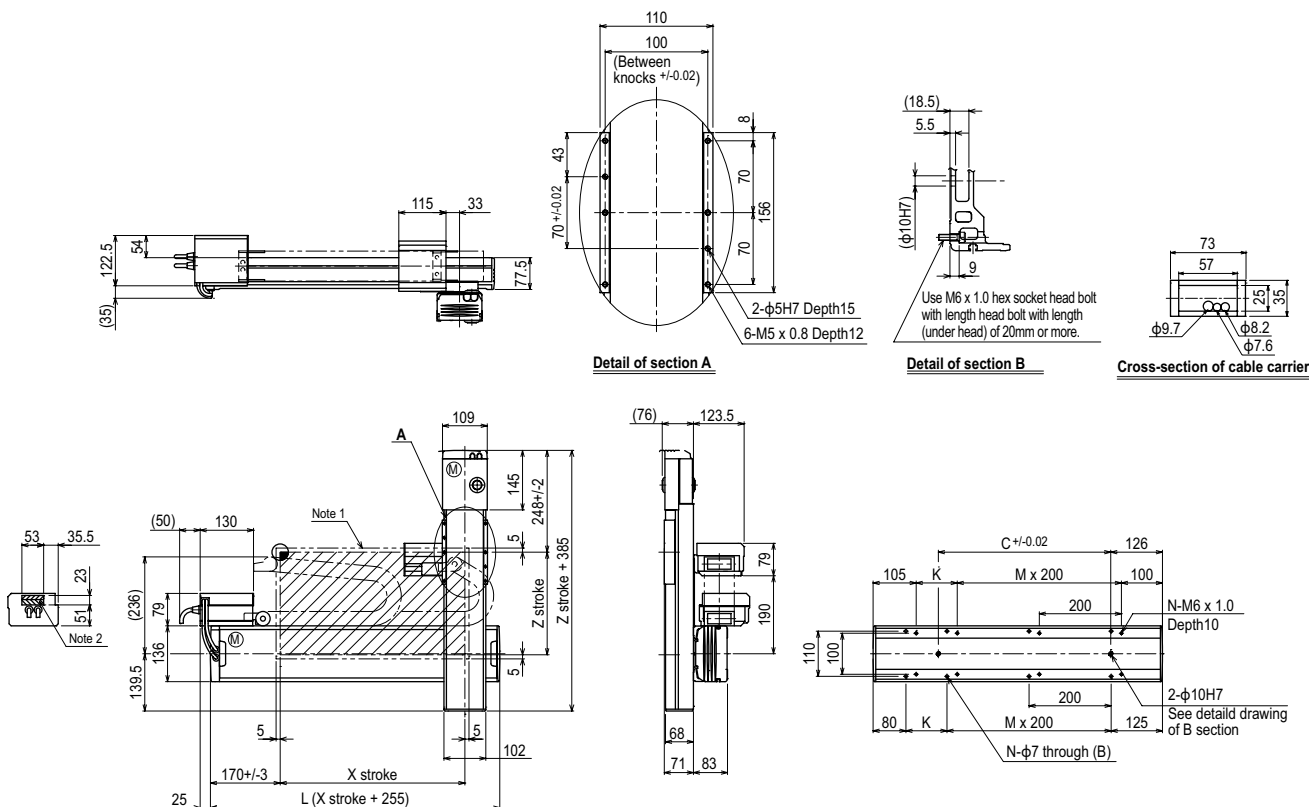
### Maximum payload (kg)

X stroke (mm)	Z stroke (mm)
150 to 1050	150 to 350
	8

### Controller

Controller	Operation method
RCX320-R	Programming / I/O point trace / Remote command / Operation using RS-232C communication

### SXYx 2 axes / ZFL20 (F1)



X stroke	150	250	350	450	550	650	750	850	950	1050
L	405	505	605	705	805	905	1005	1105	1205	1305
K	200	100	200	100	200	100	200	100	200	100
C	240	240	420	420	600	600	780	780	960	960
M	0	1	1	2	2	3	3	4	4	5
N	4	6	6	8	8	10	10	12	12	14
Z stroke	150	250	350							
Maximum speed for each stroke (mm/sec) <sup>Note 3</sup>	1200			960 780 600 540						
Speed setting	—			80% 65% 50% 45%						

Note 1. The moving range when returning to origin and the stop position when stopping by the mechanical stopper.

Note 2. The shaded position indicates a user cable extraction port.

Note 3. When the X-axis stroke is longer than 750mm, resonance of the ball screw may occur depending on the operation conditions (critical speed). In this case, reduce the speed setting on the program by referring to the maximum speeds shown in the table at the left.