

SXYx

2 axes / IO

● Arm type

● Cable carrier

Ordering method

SXYx - C

IO

RCX320-2

Model

Cable

Combination

X-axis stroke

Y-axis stroke

ZR-axis

Cable

Controller / Number of controllable axes

Safety standard

Option A (O.P.A.)

Option B (O.P.B.)

Vision System

Absolute battery

A1

A2

A3

A4

15 to 105cm

15 to 65cm

3L: 3.5m

5L: 5m

10L: 10m

Specify various controller setting items. RCX320 ▶ **P.626**

Specification

	X-axis	Y-axis
Axis construction <sup>Note 1</sup>	F14H	F14
AC servo motor output (W)	200	100
Repeatability <sup>Note 2</sup> (mm)	+/-0.01	+/-0.01
Drive system	Ball screw φ15	Ball screw φ15
Ball screw lead <sup>Note 3</sup> (Deceleration ratio) (mm)	20	20
Maximum speed <sup>Note 4</sup> (mm/sec)	1200	1200
Moving range (mm)	150 to 1050	150 to 650
Robot cable length (m)	Standard: 3.5    Option: 5,10	

Note 1. Use caution that the flame machining (installation holes, tap holes) differs from single-axis robots'.

Note 2. Positioning repeatability in one direction.

Note 3. Leads not listed in the catalog are also available. Contact us for details.

Note 4. When the X-axis stroke is longer than 750mm, resonance of the ball screw may occur depending on the operation conditions (critical speed). In this case, reduce the speed setting on the program by referring to the maximum speeds shown in the table below.

Maximum payload (kg)

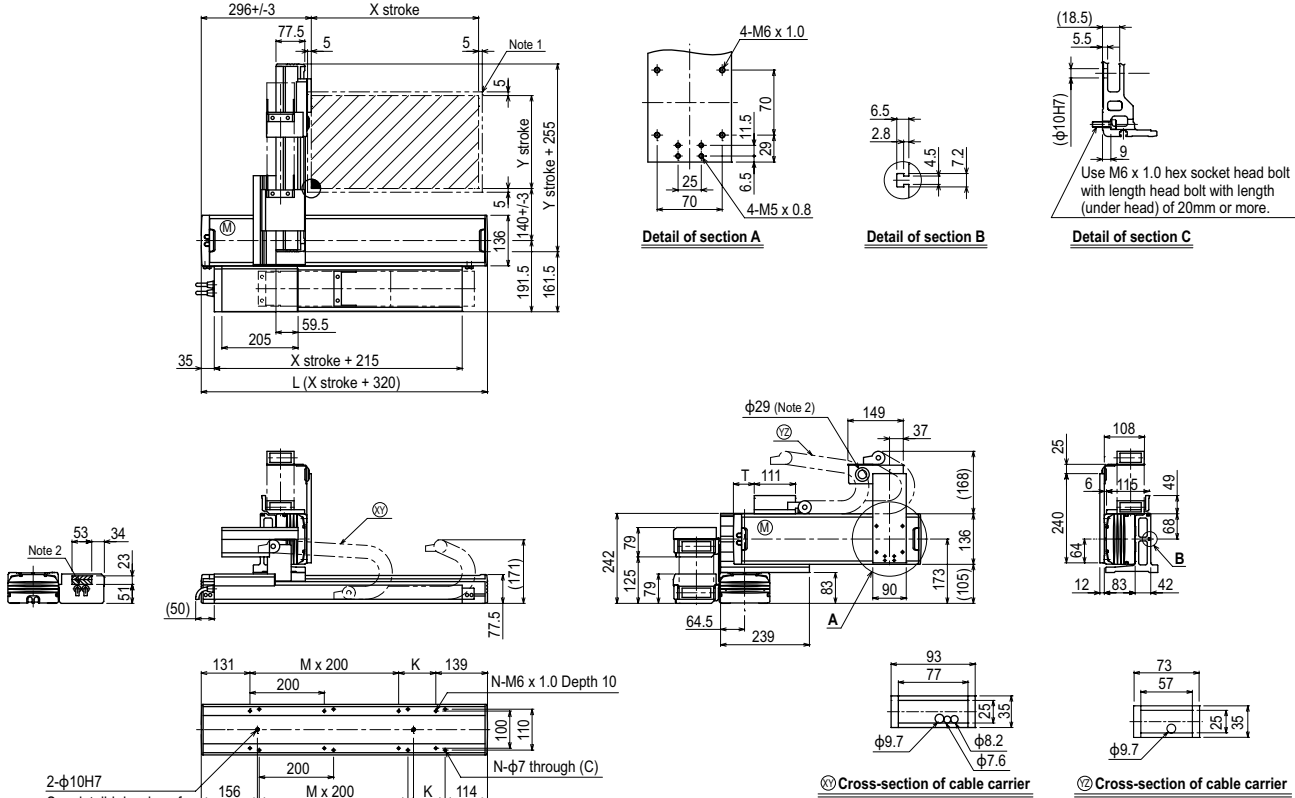
Y stroke (mm)	XY 2 axes
150	19
250	16
350	14
450	12
550	10
650	8

Controller

Controller	Operation method
RCX320	Programming / I/O point trace / Remote command / Operation using RS-232C communication

SXYx 2 axes / IO

A1



X stroke	150	250	350	450	550	650	750	850	950	1050
L	470	570	670	770	870	970	1070	1170	1270	1370
K	200	100	200	100	200	100	200	100	200	100
D	240	240	420	420	600	600	780	960	960	1140
M	0	1	1	2	2	3	3	4	4	5
N	4	6	6	8	8	10	10	12	12	14
Y stroke	150	250	350	450	550	650				
T	55	110	165	220	275	330				
Maximum speed for each stroke (mm/sec) <sup>Note 3</sup>	1200					960	780	600	540	
Speed setting	-					80%	65%	50%	45%	

Note 1. The moving range when returning to origin and the stop position when stopping by the mechanical stopper.

Note 2. The shaded position indicates a user cable extraction port.

Note 3. When the X-axis stroke is longer than 750mm, resonance of the ball screw may occur depending on the operation conditions (critical speed). In this case, reduce the speed setting on the program by referring to the maximum speeds shown in the table at the left.

