



# YAMAHA NEWS

1971  
August

## Brand-new addition YAMAHA V 90

The Yamaha V90 has joined the V series as the brand-new and largest member of the family.

Though basically same as the smaller brothers of the family, the 89cc single aluminum cylinder engine ensures extra power and more riding comfort as well as more versatile utility, of course.

For shopping, commuting, school attending, country touring and any other purposes in towns or even off the road, the V90 performs to full satisfaction of riders.



### SPECIFICATIONS

#### PERFORMANCE

|                            |                                     |
|----------------------------|-------------------------------------|
| Max. speed range .....     | 90km/h (56 mph)                     |
| Climbing ability .....     | 22                                  |
| Min. turning radius .....  | 1,800 mm (70.9 in.)                 |
| Min. braking distance..... | 7.5 m @ 35 km/h<br>(25 ft. @22 mph) |

#### ENGINE

|                        |                                      |
|------------------------|--------------------------------------|
| Type.....              | 2-stroke, Reed valve, Single         |
| Displacement.....      | 89 cc (5.43 cu. in.)                 |
| Bore and Stroke.....   | 50 x 45.6 mm<br>(1.969 x 1.795 in.)  |
| Compression ratio..... | 6.8 : 1                              |
| Max. horsepower.....   | 7.5 hp @ 6,500 rpm                   |
| Max. torque .....      | 0.95 kg-m (6.9 ft-lb)<br>@ 4,500 rpm |

|                          |  |
|--------------------------|--|
| Lubrication system ..... | Autolube   |
| Starting system .....    | Primary kick starter   |
| Transmission .....       | Automatic centrifugal clutch<br>3-speed gearbox, Seasaw type |

#### DIMENSIONS

|                            |                        |
|----------------------------|------------------------|
| Overall length.....        | 1,845 mm (72.6 in.)    |
| Overall width .....        | 645 mm (25.4 in.)      |
| Overall height.....        | 1,010 mm (39.8 in.)    |
| Wheelbase.....             | 1,180 mm (46.5 in.)    |
| Min. ground clearance..... | 135 mm (5.3 in.)       |
| WEIGHT (Net).....          | 80 kg. (176 lbs.)      |
| FUEL TANK CAPACITY.....    | 5.3 lit. (1.4 US gal.) |
| OIL TANK CAPACITY .....    | 1.4 lit. (1.5 US qt.)  |
| TIRES front.....           | 2.50-17-4PR            |
| rear .....                 | 2.50-17-4PR            |

**NEW  
MODEL**

## Dependable roadster

The V90 features everything required of the road model in its class. The newly-designed dual reed valve system has noticeably improved the breathing function of engine, thereby delivering extra power over wide range of speeds from low to high.

This system also saves fuel, gives easier starting and ensures better acceleration.

The Autolube separate oil injection system proves a tremendous aid to the improvement of engine performance by metering a quantity of oil accurately just to meet every variation of load.

The V90 is equipped with the centrifugal automatic clutch 3-speed gearbox which enables even the novice to shift gears effortlessly. Front brakes are ideally waterproof and dustfree, and always ready to show quick and fade-free response to requirements on whatever surface conditions. Much consideration has been given to the improvement of riding comfort by employing more rational layout method of handlebar, seat, footrests, etc.

## Refined equipment

All switches are grouped together on the left permitting rider's fingertip operation. All illuminated oil gauge which is located under the seat next to the Autolube oil filler, ensures quicker and surer oil check. The capacity of fuel tank is 5.3 liters to eliminate the need of refuelling even during a longer cruising.

Exhaust noise is amazingly quiet thanks to the merits of Yamaha's unique muffler design.

# Yamaha World-Wide Family

## YAMAHA MOTOR N.V.

Europe is one of the most important markets for Yamaha products, especially for motorcycles and outboard motors.

Yamaha Motor N.V. was established in Amsterdam, the Netherlands in November, 1968 as the market activity center covering the whole area of Europe.

Yamaha has taken the best choice in deciding the location of its headquarters in Europe. Apart from the ideal geographical location of this country in Europe, the Dutch people's high-sensed internationality has proven a tremendous aid to the business activities of Yamaha.

For the past three years, combined efforts of the staff, both Japanese and Dutch under the leadership of Mr. Nagaoka, managing director, have boosted sales by leaps and bounds.



Mr. Nagaoka is leading every phase of activities of the company.



Office building of Yamaha Motor N.V.



Mr. B. Passet



Mr. H. Nuberg

### Wonderful Yamaha

By Mr. B. Passet  
Outboard Motor Sales Manager

I am the Dutch staff with the longest service career, as I had been employed by the company earlier than the time when Yamaha Motor N.V. was founded in 1968. I have four children, and all of them but the youngest who is now only two years, are boating fans. I have a couple of boats, one is a steel-made cabin cruiser and the other a wooden row boat for children's recreational use. They like Yamaha outboard motors best. Because compact and light Yamahas enable them to handle effortlessly.

Numerous waterways running throughout this country provide ideal places for light-weight Yamaha outboard motors for both leisure and utility purposes.

### Snowmobile is exciting, too

By Mr. H. Nuberg  
Outboard Motor & Snowmobile Sales Staff

I was employed by Yamaha Motor N.V. in January, 1969. It proved a wonderful turning point in my life.

Now, I have a big interest in my sales business. For I can recommend our customers Yamaha products with pride and confidence.

Motorcycles and mopeds on the land, and outboard motors on the water, Yamaha products are becoming progressively popular in both fields. Snowmobilies on the snow are exciting, too. Once I have sampled it, and the experience was really impressive. If our country were snowy like Sweden or Denmark, I could use a Yamaha snowmobile daily as a commuting vehicle on the snow.



R. Gould won the 1970 world championship riding a 250cc Yamaha. He is also making a tough bid for this year's title.



The inside office is well designed for the improvement of working efficiency.

# What I think of the Netherlands

By Mr. H. Okawa  
YAMAHA MOTOR N. V.



Talking of the Netherlands, all of you may bring to mind tulips booming all over, a sight of windmills, nice cheese and butter, or wooden shoes and racial costumes. They may form a fixed image of this country, really. But, anything more? I wonder if all of you could easily list up other features. Now, I wish to invite your attention to the fact that the Dutch people have been engaged in the world-renowned land reclamation works since many years ago, and Shell and Philips, two of the largest enterprises in the world have been established in this country.

## Land is dead flat overall

The word 'Netherlands' means lowlands. This country is approx. equal in area to Kyushu Island in Japan, and that, one fourth of the area is below the sea level. 'Dead flat' may describe the topographical conditions of this country most definitely. "God has created the world", say the Dutch people with the highest pride, "But, we ourselves have created our own lands".

Indeed, their efforts have been consistently directed toward the biggest scale reclamation works to make their own lands better to live on since very olden times.

For example, water which is absolutely indispensable to agriculture, used to be a threat to farmers in this country, rather than a natural benevolence. Therefore, the history of Dutch agriculture is the history of people's struggle for conquering water. Windmills and dikes seen all over the country have come to appear through these processes.

Now, agriculture is a mainstay industry of this country. Farming products amount to some 30% of total export sales each year. The Netherlands is also focussing full efforts on the development of modern industries represented by a gigantic oil combine established along the coast, as a member country of the European Communities.

The people have not only conquered water threat but converted it into comfort. The networks of unique waterways running throughout the country are providing nice places for leisure boating.

## Cooperative nationality

During a summer vacation each year, the city of Amsterdam becomes a Mecca of hippies from every part of the world.

But, why? All of them unanimously agree that the Dutch people show the most amiable attitude toward them. They feel themselves at liberty in Amsterdam. Their opinions may be suggestive of the Dutch nationality.

Being surrounded by rationalistic German and romantic French, the Dutch people have long trained their cooperative and flexible nationality to successfully negotiate both contrasting nations, I believe.

Their unique international adaptability has resulted in Royal Dutch Shell Oil and Philips Electric which are super gigantic enterprises in the world.

In a word, the Dutch people are the most advanced business men who are always ready to deal with everything from an international vision.

# Graphic Report from Brazil

## Progressive industrialization



### Photo

A scene of Yamaha motorcycle demonstration at the agricultural show recently held. Lightweight Yamahas are winning higher appraisal for leisure and utility purposes. Mr. Sawada, 5th from left, is always active to lead the sales promotion program as the responsible territory manager.

## Ideal conditions for motorcycling activities

Brazil is benefited by mild climate throughout the year just like many other countries in the continent. In addition, well-developed roads running through vast plains and amazing scenic beauty are providing ideal conditions for the popularization of motorcycling activities. The excellent mobility and maneuverability of motorcycles also just fit the gay nature of the Latin youth.

The market of motorcycles in general is steadily expanding here, and Yamaha is all the time strenuous to claim larger share. Yamaha Motordo Brazil Ltda. which has been established in San Paulo as the base of market activities in this part of the world, is taking a very vital role in every phase of sales promotion program.

Brazil is located just at the center of South America. It is the 5th largest country in the world, occupying approx. one second of the continent. This country has been long famous for its agricultural products of excellent quality represented by the world-renowned coffee, cocoa, sugar and cotton. These several years, however, greater efforts have been concentrated on the development of manufacturing and mining industries to break the image of agricultural country.

San Paulo and Rio de Janeiro are the centers of progressive industrialization.



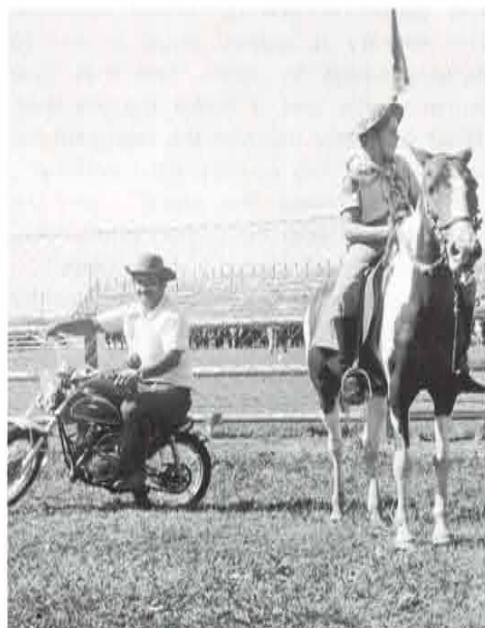
Yamaha motorcycles prove often the most successful make at big racing events, which directly combines with sales promotion. The picture was taken immediately after the prizegiving ceremony of the '71 Interlagos 500-mile race.



Dino Motor in San Paulo is always brisk with young enthusiasts.



Lightweight Yamahas also play a major role in circus shows.



The Yamaha Mini Enduro proves sometimes tougher and faster than a horse.

# YAMAHA 650 XS1

## Takes Active Role in Iran

It was in April that 240 units of the Yamaha 650 Street Sport XS1 were shipped to Iran. These Yamahas were intended for police patrol use in Teheran, the capital of Iran.

The police had formerly used exclusively 1200cc bikes of foreign makes, but they came to appreciate the largest Yamaha's performance and quality as the best for this purpose. The Yamahas just met their expectation. They have been taking an active role in daily patrol around the city, thus making tremendous contributions to the police since May. The Yamahas are all finished in black and equipped with a siren and radio.



## Service Centers around Japan

Increasing sales of motorcycles have urged the company to further solidify the service system on a nationwide basis. Recently, Yamaha has laid out a plan to establish service centers around Japan for the purpose of promoting parts supply and after-service activities more efficiently and effectively.

Here introduced is the Nagoya Service

Center which has been recently established as the first one of the program. It features various ultra-modern service facilities and equipments including the chassis dynamo meter and outboard motor test tank. Nagoya is the third largest city in Japan, and motorcycling is particularly active around this district.



The chassis dynamo meter is a unique equipment first ever employed in the facility of the kind.

**YAMAHA**

**TOPICS**

Mr. W.J. Mellis, Yamaha dealer in Australia, was recently instrumental in a special supplement in a local paper featuring motorcycles. The supplement was participated by a lot of competitive dealers, but Mr. Mellis proved most successful in publicizing for Yamaha the brand name. Here introduced are pictures taken by Mr. Mellis in relation to the said supplement.

## **Best Identification of Brand Name-Australia**



Nine-year old David Walmsley of Woy Woy, N.S.W., Australia demonstrates the Yamaha Mini Enduro JT1 to his father and a group of local trail enthusiasts.



Special display of Yamaha machines arranged by Mr. W.J. Mellis of Woy Woy Motorcycle Centre to coincide with special motorcycle feature and road safety demonstrations held in his town.

## **Olympia Motorcycle Show America**

Yamaha trail and sport models are consistently enjoying the increase of demands throughout the continent of North America. It, in particular, was Yamaha that induced the dawn of entirely-new off-the-road motorcycling called "trail run" to best fit the topographic conditions of the continent and highly inspire the spirit of the action-loving enthusiasts.

The motorcycle show held in major cities around the country is always highlighted with the Yamaha corner.



## **W. White's New Showroom New Zealand**

New Zealand is a very promising market for Yamaha motorcycles. W. White Ltd., Yamaha distributor in Auckland has recently established a new impressive showroom of motorcycles to further expand business. New Yamahas which are arrayed over a spacious floor, draw particular attention of the sport-loving youth.



W. White Ltd. is steadily enlarging the market share of Yamaha motorcycles in this part of the world.



The inside layout is impressive enough to attract a lot of young enthusiasts.

### **CONTRIBUTIONS INVITED**

Just send us pictures you've taken of stories, interesting happenings or, extraordinary incidences-any-thing if it's about YAMAHA. A commemorative gift will be sent to those subscribers whose pictures are accepted for publication.

YAMAHA MOTOR CO., LTD.  
NAKAJO· 1280, HAMAKITA  
CITY, SHIZUOKA PREF. JAPAN

## **This is Road master**

A group of Yamaha riders led by an instructor is now demonstrating a model touring by motorcycle. It is a scene of Yamaha touring school recently promoted by a local dealer. Those who have finished the whole session become competent road masters to contribute to traffic safety.



## **They Select Yamaha as NO. 1**

Jeddah Television Station in Saudi Arabia recently promoted a big motorcycle contest attracting a lot of entries including Yamaha, Suzuki, Honda, Kawasaki, Bridgestone, Ducati and other foreign makes. Most of voters selected Yamaha as the best one.

Here pictured is one of the ardent Yamaha fans. He rides his favorite Yamaha carrying a sticker written in Arabic as attached to the front fender

The meaning in English is that I am a deer known for my strength and elegance, and if you want to know more of me, ask the desert.



## **350 Yamaha Wins 500 Class**

## **J. Dowsett Sweeps Championship Events**

Jim Dowsett riding Yamaha machines impressively swept the South Australian Scramble Championship events recently held at Port Pirie, South Australia as follows:

125cc class 1st riding 125cc MX Yamaha  
Unlimited 1st riding 360cc MX Yamaha  
Besides, other Yamaha riders took most of major placings in every event.



J. Dowsett sitting astride the 360cc Yamaha after brilliant victory



A 350cc Yamaha racer ridden by Jim Dunn under contract with Fred Deeley Ltd., Yamaha distributor in Canada won a 500cc class race which was run on the 1.8-mile

Westwood Raceway in Vancouver, setting a new lap record of 1' 17" 0. Dunn is one of Fred Deeley-sponsored top class riders.

## **Yamaha Exhibition at Theatre**



Siang Xay, Yamaha distributor in Vientiane, Laos, arranged an exhibition show of Yamaha motorcycles at a movie theatre, Vieng Samay. The show proved a good publicity by attracting a lot of enthusiasts throughout a week-period.

# Battery Maintenance

## Battery charging from external power source

Before starting charge, be sure that the battery has been topped up with distilled water. Charging work should be performed at the rate of 1.5 amperes, and should be continued until the voltage and specific gravity of each cell show no further increase over successive hourly readings.

In case the specific gravity of any cell fails to rise while charging, and no gassing takes place, you must check it for internal short circuit. Keep in mind that the maximum permissible temperature of electrolyte is 120°F (48.9°C). If the said temperature is reached, you must suspend charging to allow the temperature to fall by 10 degrees at least.

See the table for correct interrelation between temperature and specific gravity.

Table "A" (Battery fully charged).

|                            |
|----------------------------|
| 1.270 at 120°F. (48.9°C.)  |
| 1.280 at 100°F. (37.8°C.)  |
| 1.285 at 80°F. (26.7°C.)   |
| 1.295 at 60°F. (15.6°C.)   |
| 1.303 at 44°F. ( 4.4°C.)   |
| 1.310 at 20°F. (-6.7°C.)   |
| 1.320 at 0°F. (-17.8°C.)   |
| 1.325 at -21°F. (-29.4°C.) |

Table "B" (Battery discharged).

|                            |
|----------------------------|
| 1.220 at 120°F. (48.9°C.)  |
| 1.230 at 100°F. (37.8°C.)  |
| 1.235 at 80°F. (26.7°C.)   |
| 1.245 at 60°F. (15.6°C.)   |
| 1.260 at 40°F. ( 4.4°C.)   |
| 1.270 at 0°F. (-17.8°C.)   |
| 1.275 at -21°F. (-29.4°C.) |

## Cell test for internal short circuit

Take the individual voltage of each cell while the battery is on charge, and also when not on charge. In every case the voltage of defective cell will be less than the others. If a cell has an internal short circuit, replace the battery.

## Precautions in cold weather

The state of charge must be kept in the condition as follows, to prevent the electrolyte from freezing:

|   |
|---|
| 1.200 specific gravity at 0°F. (17.8°C.)    |
| 1.245 specific gravity at -21°F. (-29.4°C.) |
| 1.265 specific gravity at -30°F. (-34.4°C.) |

## REIGNING CHAMPION R. GOULD HITS BACK

### Swedish Grand Prix, 8th Round of '71 World Series

Reigning 250cc class champion R. Gould impressively hit back to win the Swedish GP, 8th round of this year's world series which was held on July 25 on the newly built Anderstorp Circuit.

Gould riding a specially prepared 250cc TD2 was flying and took over the lead shortly after start. From then on, he perfectly dominated this 31-lap race to add invaluable 15 points to his score. P. Read who led the championship table missed this round because of injuries suffered on his right shoulder at the Czechoslovakian GP. Now, Gould is now just 15 points behind Read. The title will be decided between them during remaining 4 rounds of the series.



### Results

|              |               |             |           |           |
|--------------|---------------|-------------|-----------|-----------|
| 250cc class  | 31 laps       | 76.91 miles |           |           |
| 1st          | R. Gould      | Yamaha      | 58' 23" 2 | 79.49 mph |
| 2nd.         | P. Smart      | Yamaha      | 58' 56" 0 | 78.45 "   |
| 3rd          | J. Saarinen   | Yamaha      | 59' 49" 6 | 77.54 "   |
| 4th          | T. Lansivuori | Yamaha      | 59' 51" 6 | 77.50 "   |
| 5th          | F. Perris     | Yamaha      | 59' 54" 0 | 77.48 "   |
| Fastest lap, | R. Gould      |             |           |           |