

# SXYx 2 axes / ZF

● XZ type ● Cable carrier ● Z-axis: clamped base / moving table type (100W)



## Ordering method

**SXYx - C** [ ] [ ] **ZF** [ ] [ ] [ ] [ ] [ ] [ ]

**Model** [ ] **Cable** [ ] **Combination** [ ] **X-axis stroke** [ ] **ZR-axis** [ ] **Z-axis stroke** [ ] **Cable** [ ]

**RCX320-2** [ ] [ ] [ ] [ ] [ ] [ ]

**RCX222** [ ] [ ] [ ] [ ] [ ] [ ]

Specify various controller setting items. RCX320 ▶ **P.660**  
Specify various controller setting items. RCX222 ▶ **P.670**

## Specification

	X-axis	Z-axis
<b>Axis construction</b> <small>Note 1</small>	F14	F10-BK
<b>AC servo motor output (W)</b>	100	100
<b>Repeatability</b> <small>Note 2</small> (mm)	+/-0.01	+/-0.01
<b>Drive system</b>	Ball screw φ15	Ball screw φ15
<b>Ball screw lead</b> <small>Note 3</small> (Deceleration ratio) (mm)	20	10
<b>Maximum speed</b> <small>Note 4</small> (mm/sec)	1200	600
<b>Moving range (mm)</b>	150 to 1050	150 to 350
<b>Robot cable length (m)</b>	Standard: 3.5 Option: 5,10	

Note 1. Use caution that the frame machining (installation holes, tap holes) differs from single-axis robots.  
 Note 2. Positioning repeatability in one direction.  
 Note 3. Leads not listed in the catalog are also available. Contact us for details.  
 Note 4. When the X-axis stroke is longer than 750mm, resonance of the ball screw may occur depending on the operation conditions (critical speed). In this case, reduce the speed setting on the program by referring to the maximum speeds shown in the table below.

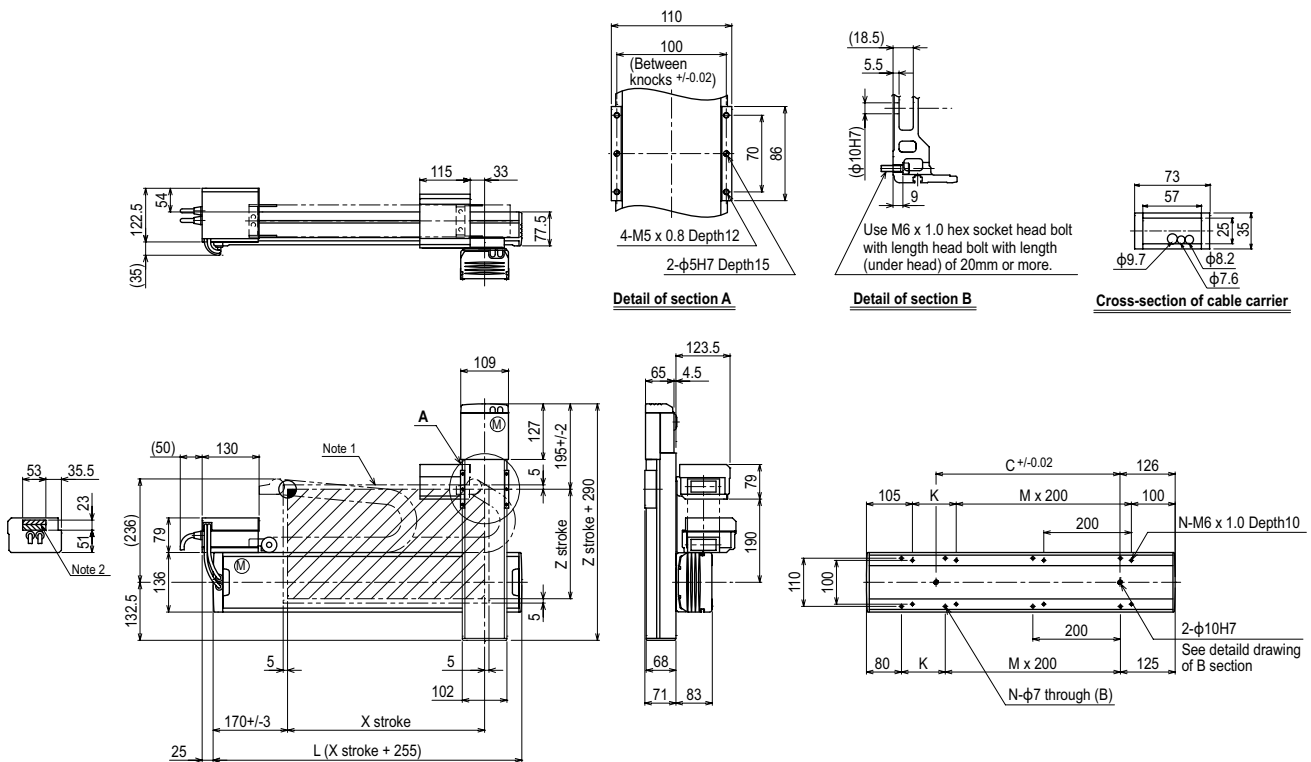
## Maximum payload (kg)

X stroke (mm)	Z stroke (mm)
150 to 1050	150 to 350
	10

## Controller

Controller	Operation method
RCX320	Programming / I/O point trace / Remote command / Operation using RS-232C communication
RCX222	

## SXYx 2 axes / ZF (F1)



X stroke	150	250	350	450	550	650	750	850	950	1050
<b>L</b>	405	505	605	705	805	905	1005	1105	1205	1305
<b>K</b>	200	100	200	100	200	100	200	100	200	100
<b>C</b>	240	240	420	420	600	600	780	780	960	960
<b>M</b>	0	1	1	2	2	3	3	4	4	5
<b>N</b>	4	6	6	8	8	10	10	12	12	14
<b>Z stroke</b>	150	250	350							
<b>Maximum speed for each stroke (mm/sec)</b> <small>Note 3</small>	<b>X-axis</b>		1200				960	780	600	540
<b>Speed setting</b>			-				80%	65%	50%	45%

Note 1. The moving range when returning to origin and the stop position when stopping by the mechanical stopper.  
 Note 2. The shaded position indicates a user cable extraction port.

Note 3. When the X-axis stroke is longer than 750mm, resonance of the ball screw may occur depending on the operation conditions (critical speed). In this case, reduce the speed setting on the program by referring to the maximum speeds shown in the table at the left.