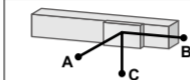
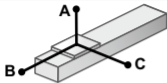


Allowable overhang Note



Horizontal installation (Unit: mm)

		A	B	C
Lead 16	2kg	3000	2123	1436
	4kg	2493	1001	680
	6kg	1571	627	428
Lead 8	3kg	3000	1375	932
	6kg	1571	627	428
	9kg	956	378	260

Wall installation (Unit: mm)

		A	B	C
Lead 16	2kg	1500	2091	3000
	4kg	710	975	2443
	6kg	440	603	1524
Lead 8	3kg	979	1347	3000
	6kg	440	603	1524
	9kg	260	355	912

Vertical installation (Unit: mm)

		A	C
Lead 16	1kg	3000	3000
	1.5kg	2458	2457
	2kg	1837	1837
Lead 8	2kg	1837	1837
	3kg	1217	1216
	4kg	907	906

Note. Overhang at travelling service life of 3000km.
(Service life is calculated for 100mm stroke models.)